



# review

## WRMC Children are One in a Million...

by *Coro Intern, Christy Gray*

Four students, all children of WRMC employees, have been awarded the highly competitive Shell Companies Foundation Merit Scholarship competition.

**Mary Brewster, Eric Duncan, Debra Olsen and Tracy Perkins** all received four year stipends awards, along with 46 other Shell employee children nationwide. On May 8, the scholars joined their parents, high school principals and counselors for an honorary luncheon, hosted by WRMC, at Sunset Hills Country Club.

The competition began in October of 1984, when according to **Mary Walker**, associate director of Educational Service for the National Merit Scholarship Corporation, the company that determines the winners, 1,230,000 students sat down to take the Pre-Scholastic Aptitude Test (PSAT). The PSAT is the qualifying test for National Merit Scholarship awards and is the precursor for the Scholastic Aptitude Test (SAT), a prime tool in college admission decisions.

The top 15,000 scores were taken nationwide and these students were named semi-finalists. Each semi-finalist forwarded his academic record reflecting grades earned and course difficulty, recommendations and endorsements from his high school, a list of activities which demonstrate leadership and citizenship and his SAT scores. This step of the competition took place in the students' senior year.

The final decisions were made this spring and 6,000 finalists were named nationwide. Approximately 430 candidates competed for the Shell awards.

**Mary Brewster**, daughter of **Margaret and Joe Brewster**, will attend the University of Illinois and study Chemical Engineering next year. Mary graduates from Edwardsville High School.

continued on page 2



*Four WRMC employees' children were selected winners of the highly competitive Shell Scholarships. The Shell Companies Foundation awarded the scholarships to these students based on grades, extracurricular activities and citizenship. The winners, pictured above with their parents, were presented their certificates and honored with a luncheon hosted by WRMC. They are (left to right) Randy and Sharon Duncan with son, Eric, Gary and Carla Perkins, with daughter Tracy, Margaret and Joe Brewster (not pictured), with daughter Mary and Mary and Howard Olsen, with daughter Debra. Congratulations winners for a supreme effort!*

## First Quarter Earnings

Shell Oil Company earned \$276 million in the first quarter of 1986, a decrease of \$20 million from the like 1985 period. Funds from operations totaled \$974 million, an increase of \$111 million from the first quarter 1985.

"Despite lower crude oil prices, funds from operations improved because of increased crude oil and natural gas production, greater refined product sales

volumes, and higher margins for oil and chemical products," Shell Oil Company, president, **John Bookout** said.

He reported that the Oil Products segment earnings of \$61 million were up \$53 million from the first quarter of 1985. He said that margins improved because the benefit of lower raw material and refinery fuel costs was greater than the negative effect of reduced refined product selling prices.

## WRMC Children...

continued from page 1

**Eric Duncan**, son of **Sharon and Randy Duncan**, will study Chemical Engineering next year, at The University of Illinois Champaign-Urbana. He versity of Illinois at Champaign-Urbana. School, where he participated in wrestling, band and the National Honor Society.

**Debra Olsen**, daughter of **Mary and Howard Olsen**, will also attend The University of Illinois at Champagne-Urbana. Debra is already receiving distinction from her college selection as she is one of 100 freshmen to be accepted into the campus honors program. Debra graduates from Edwardsville High School where she stands third in her class.

**Tracy Perkins**, daughter of **Carla and Gary Perkins**, will use her award to study chemical engineering at The University of Missouri at Rolla. Tracy will graduate valedictorian from Roxana High School, where she was recognized as an Illinois State Scholar, a Jackling Award Institute award recipient and by The National Honor Society. She also served on the prom committee, as a junior Rotarian and as an Exchange Club student. She is an active athlete and plays varsity tennis and is involved with womens gymnastics.



**Boilemakers, (l to r back row) Mac Revels, Mike McVey, Alex Perkinson, Mike Short, John Wells and Jim Looser and (l to r front row) Roger Motley and Scott Wood stand in front of part of the rigging required to complete the Cracked Absorption Unit (CAU) shutdown. This group is particularly proud of the work they completed during the shutdown without a single nurse case.**

## Two Injury-free Shutdowns For Boilemakers

This group of WRMC boilemakers recently completed the Cracked Absorption Unit (CAU) shutdown without a single nurse case. A large percentage of their work had to be hand-rigged which required a great deal of planning,

patience and communication on their part.

"This was one of the best shutdowns I've ever seen. The boilemakers worked with everyone involved and accomplished their tasks safely, in a reasonable amount of time, and with a high degree of craftsmanship," says **Gary Perfetti**, boilemaker coordinator for the shutdown.

This was the second shutdown in 1986 that the boilemakers completed without a nurse case.

## How to Apply for Shell Scholarships

Students entering their junior year in high school in September and who plan to attend a four-year university, are eligible to compete for upcoming Shell Merit Scholarship awards.

Candidates for competition for the 1988 awards must take the Pre-Scholastic Aptitude Test (PSAT) this fall. The tests will be administered at the students' high schools on either Saturday, October 18 or Tuesday, October 21. Candidates should check the date and registration procedure with their counselors.

According to **Mary Walker**, associate director of Educational Service for the National Merit Scholarship Corporation, the company that determines the winners, 1.5 million students will take the PSAT this fall.

"The PSAT is the first step toward an award, but it is not by any means the deciding factor," says Walker.

The top 15,000 test scores qualify students for the next step of the competition. These students are asked to make a formal application which includes a copy of their academic record, an assessment of themselves, recommendations and endorsements from their

school and scores from the Scholastic Aptitude Test (SAT), a prime tool in college admissions.

From this group a total of 600 awards are made. Fifty of the awards are sponsored by the Shell Companies Foundation for the children of Shell employees.

A Shell Companies Foundation merit scholarship offers a minimum annual stipend of \$1,000 and a maximum of \$4,000 - or a total of \$4,000 to \$16,000 for four years. The size of the award is based on the family's need as determined by the National Merit Scholarship Corporation.

Entry blanks will be available beginning in August through November from **Nancy Yarnell**, extension 2370, in Employee Relations. Deadline for application is November. Candidates and their parents may also address inquiries to: **Shell Companies Foundation, Inc.**, P.O. Box 2099, Two Shell Plaza, Houston, Texas 77001

Including this year's awards, the Shell Companies Foundation, Inc., has supported 1,520 four-year scholarships and has paid or budgeted over \$3.5 million for this program.

## Don't Forget the Blood Drive

Complex employees will have the opportunity to give the gift of life when the American Red Cross visits the cafeteria Wednesday and Thursday, June 25 and 26. The drive will be 12 noon to 5:00 p.m. on June 25 and 7:00 a.m. to 12 noon on June 26.

Participation in the blood drive will help the Red Cross provide blood for patients in 140 hospitals in the 80-county Illinois Missouri Region. The Red Cross is once again counting on the support of Shell employees from Wood River during the drive. In addition to the satisfaction that comes from giving, all donors will be eligible to participate in a drawing. If you have any questions regarding the drive, direct them to Blood Drive coordinator, **Bev Reed** extension 2763.

# Hands Across America

On May 25, Americans from across the country joined hands in an almost continuous line to help raise funds and show their support for America's homeless in the nationwide fundraiser, *Hands Across America*. Although the *Hands Across America* line was broken in some places a few WRMC employees saw to it that there wouldn't be a break in the line, at least in this area.

**Shirley Roderfeld**, a volunteer for *Hands Across America*, was concerned when she heard the news that there would be a break in continuous line in the Alton area. The Illinois Department of Transportation announced earlier in the week that no one would be allowed to hold hands across the Clark Bridge.

"I didn't want to see all of our hard work go to waste, so I thought why not request paper hands from the area schools and get people involved," said Roderfeld.

After some phone calls, only days before the event was to take place, Roderfeld was given permission to get started with her idea. As the minutes started ticking away Roderfeld with the help of WRMC retiree, **Bill Connell**, contacted area teachers, principals, fellow employees and radio stations with the desperate message that '*Hands Across America*' needed 9,000 paper hands to cross the Clark Bridge. Other people who assisted in the effort were **Vicki**



**Karen Ruger (left) and Sally Vollintine (right), volunteers for "Hands Across America", staple the paper hands to the caution ribbon donated by WRMC. Ruger and Vollintine stapled hands well into the night so that there would be no break in the chain across the Clark Bridge.**

**Osborn**, wife of WRMC employee **Gaylen Osborn** and **Lynn Vollintine**, wife of WRMC employee, **Rick Vollintine**. Soon fellow employees began to drop off their own 'hands' and more that their kids had made. By Friday afternoon, word was spreading 'like fire'. The Alton Evening Telegraph ran an article asking for hands and support kept pouring in.

"The Alton 'Hands Across America' office received sacks of paper hands - all shapes, sizes and most with names and messages like 'I love you America',

'Please help our poor and hungry', 'Good luck in crossing the bridge', and so on," said Roderfeld.

"The office was filled with paper hands and then we realized that we had no way of attaching them to the bridge so we began calling everywhere to get the ribbon," said Roderfeld.

"After many calls and no luck, I thought I might ask **Bill Durland** (complex manager) if he could help. In a half hour he met our need with 8,000 feet of yellow caution ribbon," added Roderfeld.

Volunteers stapled hands to the ribbon through the night and WRMC employees, **Karen Ruger** and **Sally Vollintine** joined the forces on Saturday and worked well into the night stapling hands to the ribbon.

"All the time, hands kept flooding in. By the time we counted, our original request for 9,000 hands had reaped 75,000 hands!" said Roderfeld.

Early Sunday morning the hands across the bridge group started hanging ribbons of hands that extended the entire length of the Clark Bridge. By 6:30 a.m. their goal was complete and the group connected another mile to the chain for hunger.

"So many hands helped out in this mile long stretch. Hands were received from day cares, schools, hospitals, businesses, centers for the retarded and nursing homes," said Roderfeld.

"To these people many, many thanks. Your response to our need was overwhelming! Hopefully, the amount of money raised for '*Hands Across America*' will be a generous sum... as your hands were for the bridge!" said Roderfeld.



**Shirley Roderfeld, volunteer for "Hands Across America" and WRMC employee, stands on the Clark Bridge in Alton where her idea for paper hands to cross the bridge was a huge success.**

## Shell Research Lab Reunion

### Lotteo's Restaurant

3475 Humbert Road  
Alton, Illinois 62002

**August 2, 1986**

Spouses and Friends Invited!  
Open Bar: 6:00 to 7:00 p.m.  
(Beer and Mixed Drinks, No Blended Drinks)

**Dinner: 7:00 p.m.**  
**Menu: Buffet**  
**Cost: \$10.00 per person**

Please forward your reservations with a check made payable to **Elmer Gillis**, 234 Shaddy Lane, East Alton, Illinois 62024.

All reservations should be in no later than July 25th.

Please detach at dotted line and insert with payment.

\_\_\_\_\_ I will attend the retirement party at Lotteo's Restaurant.

\_\_\_\_\_ The number of people in my party (\$10.00 each).

\_\_\_\_\_ Total amount of check enclosed.

\_\_\_\_\_  
Name (Please Print)

\_\_\_\_\_  
Signature



## Dispatching

*Virgil Icide, Oil Movements Center - supervisor, explains that the Oil Movement Center is the central focus for communications and the center control point for motor gasoline blending.*

WRMC's Dispatching department is not only an important part of the refining process, but it also serves as the shipping point for most of the Complex's products. Dispatching will normally see the hydrocarbon which WRMC processes at least twice; once as the incoming crude oil, sometimes as an intermediate stream, and finally as a finished product component on its way to a customer.

"Products enter and leave Wood River Manufacturing Complex in a number of ways, this includes pipelines, barges, tank cars and tank trucks," says **Cliff Woodford**, manager of Dispatching.

"To accomplish our task we have to maintain a sophisticated tank farm and blending facility operated by an Operations and Maintenance team committed to providing accurate measurement, providing reliable storage and maintaining control of product quality," adds Woodford.

"Normally when someone mentions Dispatching, the Oil Movements Center is the first thing that people recall," states **Virgil Icide**, Oil Movements supervisor.

"Although this is the center for communications and the control point for motor gasoline blending, Dispatching covers a great deal of area and activities" adds Icide.

These include propane loading at two loading racks for tank cars and tank trucks; docks for receipt and shipment of products; asphalt blending and shipping by barge, tank car and tank truck; loading racks for almost the entire line of other products; as well as the tanks necessary to support crude oil receipt, intermediate storage, and finished product storage and shipment.

Motor gasoline is by far the largest volume product that leaves the Complex, and plans are in place to be able

to meet the planned production increases which call for shipment of approximately 155MB of motor gasoline per day.

"With the high stream factor required to meet these commitments, special attention to details of equipment operation and gasoline blending will be necessary," says **Bob Mills**, Operations supervisor.

There are also a large number of other shipments made from WRMC explains **Cal Caldieraro**, Operations supervisor. These include about 27,000 tank trucks and 2,500 tank cars per year, this activity level makes Wood River one of the largest shippers in the Mid-Continent area.

WRMC is one of the largest producers of asphalt in the Mid-Continent serving the asphalt needs of several states in the area. In 1985, the Asphalt Plant set a record of 8.8 million barrels of asphalt



**Merlin Robinson, Dock operator, maneuvers his boat while the Mississippi River was in its flood stage. Dock operators are responsible for receiving shipping through WRMC's heavy barge traffic. Last year dock operators loaded 344 barges.**

blended and shipped, according to **Tony Cafazza**, day foreman in the Asphalt Plant. Although there were some days that averaged 115 tank trucks loaded per day, most of the asphalt was shipped by tank car and barge. During 1985, there were 3,651 tank cars and 344 barges loaded.

**Joe Sapienza**, supervisor - Maintenance Dispatching, relates that it requires about 50 craftsmen in Dispatching to keep the equipment in a safe and efficient operating condition.

"I think that we have demonstrated that we have the talents to handle just about any problem that comes up in the department. We handle a wide variety of problems from cleaning tanks for change of product and routine repairs to repairs of the gasoline blenders," says Sapienza.

An integral part of the Dispatching operation is the monitoring of product qual-

ity of finished product storage and products blended onto the pipelines. The tanks that contain finished products are tested for conformance to product specifications. For products that are blended onto pipelines, the blended quality must be monitored during the shipment. The motor laboratory serves to provide a means for continually monitoring the quality of motor gasoline during blending. This enables the Motor Lab testers and the Oil Movement supervisors to react to any changes in the blend components.

"Additionally, we carry our concern for product quality of motor gasoline into the distribution terminals that receive our product. We analyze samples from each terminal monthly to ensure that our customers are receiving specification material," according to **Bill Gray**, Quality Assurance foreman, Motor Laboratory.

**Paul Aderholt**, process chemist, relates that product quality is but one of the elements of Dispatching's effort to 'Do things right the first time - every time'. Aderholt is chairman of the Dispatching Quality Improvement Team, other members are **Dan Dona, Manny Roja, Abe King, Mike Tomlanovich, Stan Pohlman, Cliff Woodford, Jim Mosby, Jim Evans, Scott Moore** and **Virgil Icade**.

Working with the other members of the Dispatching basic production unit, this group will be trying to identify problem areas that hamper their ability to do it right the first time.

"We think that we have the people in Dispatching to respond to any of the challenges presented by competition and increased customer demands, now we want to strive to provide a work place that uses the full talents of all our people," says Woodford.

## SRA Happenings

### SRA Tennis

SRA Tennis Match play began in May and ends in October; contact **Martin Culp** on extension 3051 for more information.

### SRA Bass Tournaments

Bass Tournament Results

Lake of Egypt - April 5

1st place - Orville Rahn, 6lbs 15oz bass

2nd place - Terry Eldridge, 6lbs 13oz bass

Otter Lake - April 26

1st place - Ed Miller, 8lbs 4oz bass

2nd place - Phil Parks, 6lbs 12oz bass

The next SRA Bass Tournament will be held June 14, at Orchard; contact **Phil Parks** on extension 2521 for more information.

### SRA Family Day

The SRA Family Day will be held 11:00 a.m. - 8:00 p.m., August 9 at the RoxArena Park. Entertainment, carnival rides, games, food and fun for everyone. More details will be announced later.



### Shell Toastmasters

Do you feel nervous when have to make a speech? Butterflies in your stomach? Come to the Toastmasters meeting and learn how to make your butterflies fly in formation. The purpose of the Toastmasters is to help improve your speaking ability. Meetings are held on the 2nd and 3rd Wednesday of each month in the Red Room at 5:00 p.m.

So if you have just been moved up to foreman and need to give a talk to your people or make a presentation at Westhollow or speak to your church congregation give Toastmasters a try. You will be amazed at the results possible in a short period of time. Contact **Leonard Franklin** or **Dan Podkolski** for more information. Upcoming meeting dates: June 11 and June 25.



### SRA Bowhunters

The SRA Bowhunters held their annual spring event at the **John Chandler** farm. A record crowd turned out for the first of three shoots scheduled for this year. Two more shoots are scheduled for this summer and fall. The three

shoots this year will be called the 'Triple Crown' and winners will be selected from those participants with the three highest scores. If you missed the first shoot but are still interested in participating contact **Tommy Tallman**.

### SRA Camera Club

The SRA Camera Club will meet at 7:30 p.m., July 1 in the south end of the cafeteria. The July program will feature a presentation by **Jim Peat** entitled, "New Zealand Wonderland". The Slide and Print contest subject is "Sunset and Sunrises", any early morning or late evening scene.

### SRA Bowling Tournament Champs

The SRA champions in the "X 100" league were the "Pingrinders". Congratulations to the following:

**Al Woolverton**  
**Dave Carlyon**  
**Bob Eschback**  
**Ken Fessler**

**John Ingold**  
**Gerald Cates**  
**Terry Brawley**  
**Jim Vonderheidt**

## WRMC Family Day

Saturday - September 6, 1986

In response to numerous requests for information concerning **FAMILY DAY**, and especially "How Do I Volunteer?": We now have the Steering Committee formed and working.

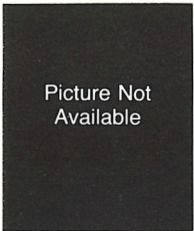
Following is a list of Committees and Committee Members who can enlist volunteers. Take your pick and have a good time! We can play and work together to make this the best **FAMILY DAY** ever.

### Family Day Steering Committee

Committee	Representative	Phone
<i>Craft Exhibit and Tours</i>		
Machinists	<b>Bob Berry</b>	2900 2356
Boiler Makers	<b>Dave Daniel</b>	2214 2681
Pipefitters	<b>Joe Baima</b>	2720
Carpenter		
Electricians		
Instrument	<b>Jim Bowler</b>	2900 2980
Labor		
Painters		
Teamsters		
Tinners		
<i>Plant Tours and Exhibits</i>		
LOP	<b>Jack Fischer</b>	2261 2411
HOP	<b>Larry Allen</b>	2562
LUBE	<b>Bill Quinn</b>	2617
EO/Utilities	<b>Jay Burack</b>	2795
QA Tours and Exhibits	<b>Bill Vargo</b>	2420
Office Tours and Exhibits	<b>Bert Mershon</b>	2484
Purchasing Tours and Exhibits	<b>Joe Pellegrino</b>	2539
Purchasing Department		

*continued on page 7*

## In Remembrance



Picture Not Available

**B. Staley**



**R. Allen**



**I. Wigger**



**A. March**



**E. Rintoul**



**A. Gobble**



**J.O. Kingston**



**A. Terry**

**Burtis Staley**, 74, died April 29. Mr. Staley was an operator 1, Distilling, before retiring in 1969 after 24 years of service.

**Ray Allen**, 86, died April 8. Mr. Allen was a painter 1, Engineering Field, before retiring in 1965 after 26 years of service.

**Irvin Wigger**, 87, died April 3. Mr. Wigger was a painter 1, Engineering Field, before retiring in 1962 after 34 years of service.

**Alva March**, 81, died April 4. Mr. March was a pipefitter welder layerout, Engineering Field, before retiring in 1969 after 32 years of service.

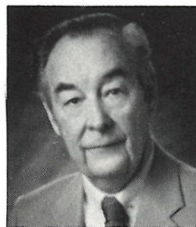
**Enos Rintoul**, 87, died April 22. Mr. Rintoul was a shift foreman, Utilities, before retiring in 1961 after 38 years of service.

**Arthur Gobble**, 70, died May 4. Mr. Goble was a tester 1, refinery laboratory, before retiring in 1970 after 26 years of service.

**J.O. Kingston**, 63, died April 23. Mr. Kingston was a tractor operator, Maintenance, before retiring in 1985 after 37 years of service.

**Albert Terry**, 82, died May 6. Mr. Terry was in the pond crew, Engineering Field, before retiring in 1963 after 29 years of service.

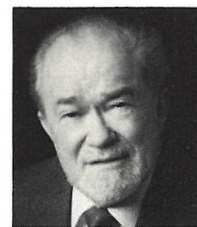
## Retirements



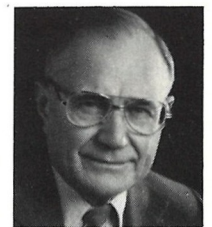
**Walt Hausman**  
senior inspector  
EOS  
38 years



**Jacque Evans**  
tester  
Quality Assur.  
37 years



**Ray Thrasher**  
design draftsman  
EP&S  
42 years

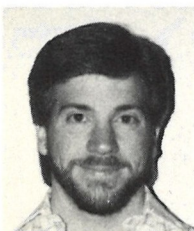


**Tony Sitko**  
design draftsman  
EP&S  
44 years



**Louie Nepute**  
maint. coordinator  
LOP - Gas  
38 years

## New To WRMC



**John LaCour**  
instrument. eng.  
EOS



**Part Time Pat Maher**  
nurse  
Empl. Rel.

## Family Day

*continued from page 6*

Logistics (Bus Coordination & Parking)	<b>Louie Bleier</b>	3187 5-443
Safety and Emergency Response	<b>Ed Perry</b>	2480 2940
Picnic, Games and General Exhibits	<b>Kerry Pitt</b>	2408
Communications Systems	<b>Al George</b>	3166
General Facilities (Tents, Tables, Power, Platforms)	<b>Dale Brueggemann</b>	2287
Housekeeping (Plant Cleanup)	<b>Glenn Cottingham</b>	2521
Promotions and Remembrances	<b>Don Baker</b>	2483
Budget Coordination	<b>Roy St. Pierre</b>	2205
Bus Tours Guides	<b>Eric Martin</b>	2280
Steering Committee Co-Chairmen	<b>Jim Bowler</b>	2900
	<b>Roy St. Pierre</b>	2205

# A 'Good Mood' Driver is a Safe Driver

by - *Coro Intern, Christy Gray*

A West German life insurance study reports a correlation between safe driving and a morning kiss.

The study reveals that people who do give that goodbye kiss are involved in fewer auto accidents. While the study does not point to a specific reason, it is not hard to make a guess. That kiss starts the driver in a good mood which continues through his/her morning drive.

Statistical information supports that a 'good mood driver' is a safe driver, less likely to anger and vent emotions by driving recklessly. A morning kiss is still no guarantee to auto safety. The numbers relating to auto accidents in this country are staggering. Every ten minutes, someone dies in an auto accident six every hour, 150 every day. With these odds, it is not difficult to see why defensive driving is important. Defensive driving means staying alert, and driving to prevent accidents in spite of the actions of others or presence of adverse driving conditions.

According to state highway departments, when driving defensively, one learns to 'give a little', tailoring driving responses to the unexpected behavior of other drivers. Specifically, stay aware of changing factors; light, weather, road and traffic conditions and the mechanical condition of your car.

"Staying aware of changing conditions is particularly important to drivers in the Complex. Current work being completed by Major Projects has called

for the addition of 1200 workers, their vehicles, equipment and trucks and major construction. The need for extra precaution around these areas is very important," warns **Bill Cunningham**, senior industrial hygienist.

Specifically, stay ahead of the situation. Look beyond the cars ahead, and watch for parked vehicles. Keep a safe following distance at all times, and allow even more room when approaching construction areas.



## Say Cheese...

*WRMC employees may have seen a peculiar scene last month when photographs for the 1987 Safety Calendar were being snapped around the Complex. For the second year the Safety Awareness Committee will produce a photographic safety calendar which is intended to raise safety awareness in the Complex. The calendar uses Complex employees in each picture to demonstrate safe work practices through living color examples. Gary Wright (pictured above) smiles as photographer, Ravi Arya, focuses in his safety gear.*



Shell Oil Company  
P. O. Box 262  
Wood River, Illinois 62095

**Published monthly for  
employees and pension-  
ers of Shell Oil Company in  
Wood River, Illinois**

Becky Doreck, editor  
(618) 254-7371,  
ext. 2168

Bulk Rate  
U.S. Postage  
PAID  
Wood River, IL  
Permit No. 229