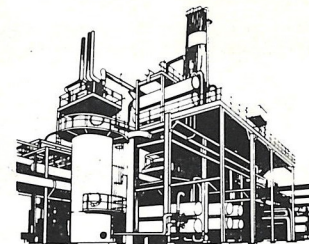


WOOD RIVER REVIEW

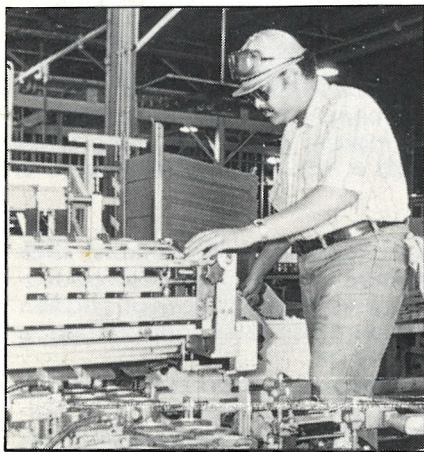
WOOD RIVER MANUFACTURING COMPLEX



VOL. 47, NO. 6 JUNE 1984

12 cans to a pack

Tray-packs of oil a handy alternative to 24-can cases



Mike Jones, Compounding operator, runs the new tray-pack line at the Canning Plant. Tray-packs each contain 12 cans of Fire & Ice® motor oil. They are being merchandised at retail outlets as alternatives to the standard 24-can cases.

If you are among the seven of 10 car owners who change their own oil, then Shell has a new product you're going to like. It is called a tray-pack and contains 12 quart-sized cans of Fire & Ice® motor oil. For the time being, tray-packs are made exclusively at Wood River's Packaged Lubricants Warehouse (PLW) and are being mass merchandised by retail stores as an alternative to the standard 24-can cases.

Tray-packs are new to Shell, yet other companies have been marketing them for the past two years, according to **W. R. "Buck" Davenport**, manager of Lubricants Sales, Head Office. Customer acceptance of competitors' tray-packs and requests from retailers prompted Shell to enter the market.

"About 65-70 percent of the packaged motor oil business is with the do-it-yourself oil changers," Davenport

said. "That is a market share we just couldn't overlook."

When the decision was made to produce tray-packs, Wood River was selected as the site for the pilot program. Davenport said the Complex was the logical choice because its canning and packaging facility is the company's fastest and most modern.

Engineering design work was performed in late 1983, followed by installation of a new conveyor, can packer, plastic film wrapper and film shrinker oven. Revisions were made to one of the two canning lines to accommodate the tray-pack operation. Both lines, however, are still used for production of cases when the tray-pack line is not running.

Startup got under way in April and truck shipments of tray-packs to retailers began in May. As of June 1,

(Continued on page 2)

Complex wins safety award

The safe operations of Wood River Manufacturing Complex were recognized by the National Petroleum Refiners Association (NPRA) during the trade group's 82nd annual meeting in San Antonio recently.

At a special presentation ceremony, NPRA board chairman, **Mark E. Houser**, presented the NPRA's Award for Meritorious Safety Performance to **R. G. Dillard**, Vice President - Manufacturing and Technical, Shell Oil Company in recognition of the exceptional record of safe operations at Wood River.

The NPRA award, which cites a facility for achieving a total recordable incidence rate of 2.0 or less for the 1983 calendar year, was presented to 32 refineries and plants operated by NPRA member companies.



A pallet of tray-packs is enclosed with a protective layer of plastic at the stretch wrap machine while Rich Carmean, machinist, makes mechanical adjustments. After wrapping, the pallet is moved into the PLW for storage and shipment to a Shell customer.

Tray packs . . .

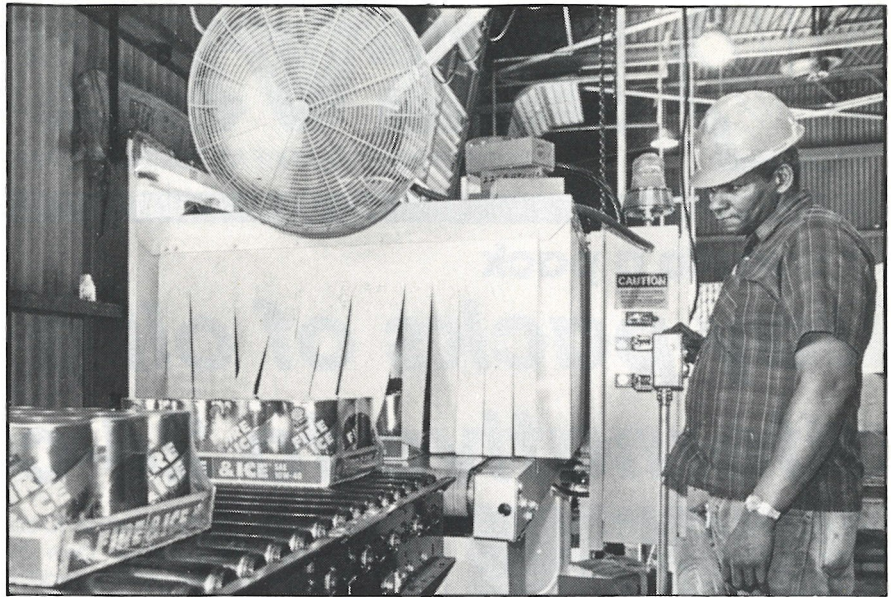
(Continued from page 1)

more than 45,000 tray-packs had been assembled and stored in the warehouse for delivery to customers, said **Dave Hutton**, EP&S project engineer. Average daily production is about 4,000 tray-packs which is 50 percent of design capacity. The line is expected to reach the 8,000-plus mark by mid-summer, stated **Jim Thatcher**, process manager - Compounding.

Thatcher said the tray-pack line was designed to be flexible. The ability to convert from tray-pack to case production and vice versa on short notice, given the demand at the time, is one of the options built into the process.

Startup complications centered around two main areas: synchronizing operation of the can filler/sealer with the palletizer, and finding a way to reduce the friction created when tray-packs came into contact with steel conveyors and other equipment, said **John Milligan**, Compounding foreman. The plastic film which covers each tray-pack for protection and containment would stick to the metal when moved.

Bob Moon, EOS specialist, has spent much of his time lately resolving the two startup problems along with other "debugging" projects. Because the tray-packs take half the number of cans as cases, it is necessary to adjust the speed and timing of all asso-



Checking on the tray-pack shrink wrap process is Jim Jorden, Compounding. Wood River is the only Shell facility making tray-packs of motor oil. Current production is approximately 4,000 a day which is 50 percent of design capacity.

ciated equipment whenever the tray-pack line is operating. The palletizer, for example, is speeded up to one and one-half its usual rate or 30 tray-packs a minute.

Moon said the sticking problem caused by the plastic film wrap was minimized after a slick, Teflon-like material was placed over sections of the palletizer and conveying equipment.

Other Wood River Canning Plant employees who are closely involved with the day-to-day tray-pack opera-

tion include **Don Diestelhorst**, **Dick Layman** and **Mike Jones**, Compounding operators; **Rich Carmean** and **Ron Dahlen**, machinists; and **Ray Skrabacz**, electrician.

"We are on schedule for startup and production of tray-packs," said Thatcher. "Debugging always takes time, but we are making good progress."

Thatcher said the demand for cases is up about 20 percent compared to 1983; however, the growing tray-pack business will probably displace a portion of the case business.

Shell offers new benefit program

Shell employees will soon be offered a new benefit which provides an excellent opportunity to build income for the future with significant tax advantages. The Shell Pay Deferral Investment Fund becomes effective with the first pay period starting in August this year and will allow eligible employees to defer from 1-to-11 percent of base pay into one or both of two investment vehicles — the equities investment fund and the guaranteed investment fund.

The equities investment fund, much like a mutual fund, will be invested in a portfolio of highly rated stocks. The guaranteed investment fund will provide fixed rates of return. For example, the initial rate is 13.55 percent through December 1985. Employees will be able to transfer amounts between the two funds effective in 1985.

Among other features, the Shell Pay

Deferral Investment Fund includes:

- Voluntary enrollment after three years of participation service.
- Flexibility to change percentage of pay deferred.
- Advantages over an IRA — with potentially higher savings, and greater tax benefits at payout.
- Access to your money through loans and financial hardship withdrawals, effective in 1985.
- Growth over the long-term, through ongoing pay deferrals and investment gains.

Employees were invited to a series of meetings during which the benefit program was explained in detail. A few additional meetings are being scheduled for employees who were unable to attend the earlier meetings. Contact your supervisor or Employee Relations for further details.

Employees are reminded to com-

plete and mail their enrollment forms by July 2.

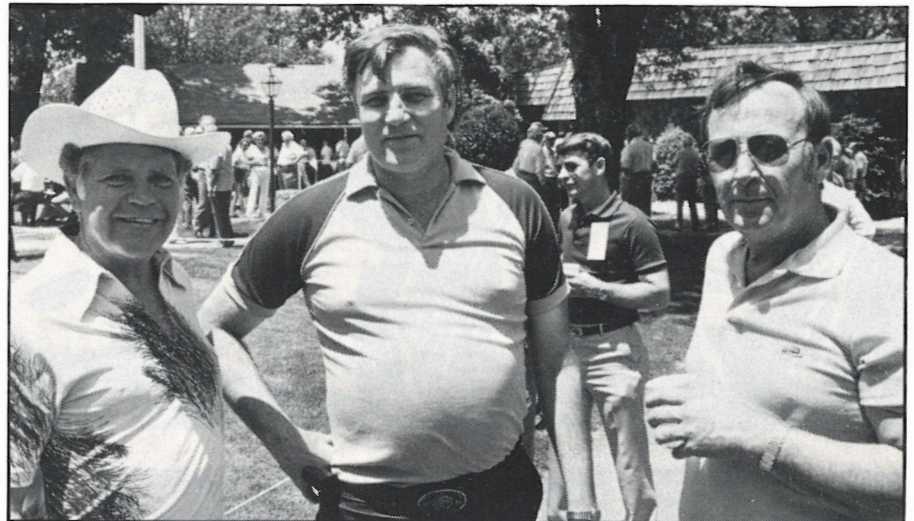
Bass Tourney

Three of the five SRA Bass Tournaments have been completed. The next one is set for Sept. 22 at Kincaid Lake, and the final tourney will be at Otter Lake in October. Winners of the first three outings were **Mike McVey**, Lake of Egypt; **Phil Parks**, Gillespie Lake; and **McVey**, Kincaid Lake.

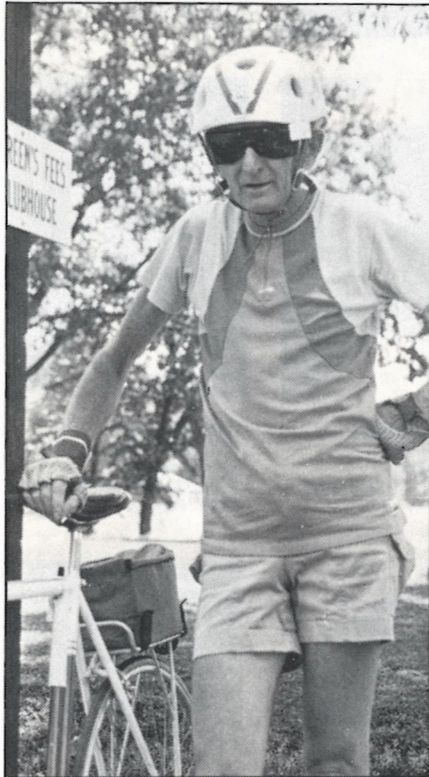
Pensioners' dinner

The annual Shell Wood River Pensioners' Dinner is scheduled for Wednesday, Sept. 26 at the American Legion Hall, Edwardsville. Details will be announced as they become finalized.

10 and Over B·B·Q



Enjoying themselves at the 10 & Over Barbecue are Bill Hurston, Personnel; Bob Rushing, Maintenance — Shops; and Bob Wells, Safety & Industrial Hygiene.



Charlie Schafer, Utilities (retired) took advantage of the warm weather by riding his bicycle to the 10 & Over Barbecue.



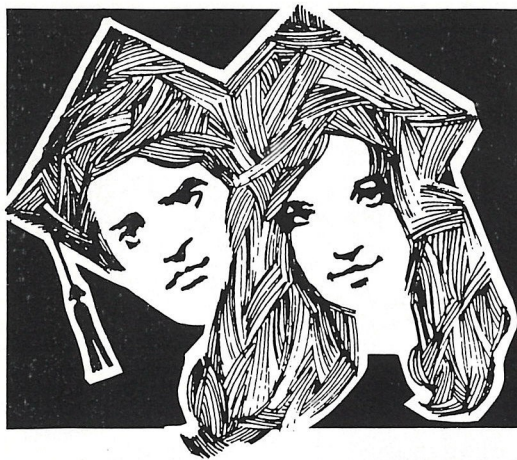
There was no shortage of food at the American Legion Park, Edwardsville. Retirees and active employees line up for chicken, barbecue beef, fish and all the trimmings. The 10 & Over was held June 2.



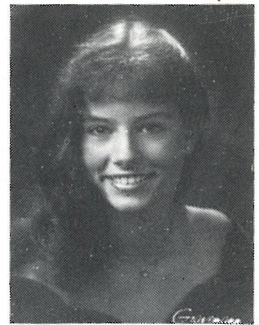
Dianne Isaak, Major Projects, tosses a dart while her opponent, Bill Jacobs, Purchasing, awaits his chance.



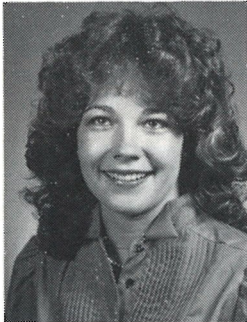
Taking his turn at horseshoes is Albert Kiline, Insulator. The horseshoe pits got a heavy workout during the annual barbecue.



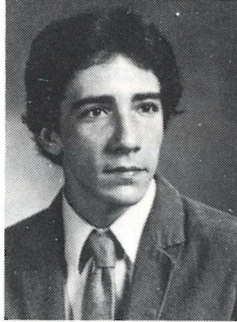
Class of 1984



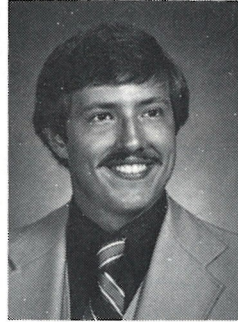
Terri Jo Abernathy
Roxana High School
daughter of Terry Abernathy,
Utilities



Susan Akers
Rosary High School
daughter of Jim Akers,
QA



David Anderson
Wood River H.S.
son of James Anderson,
Pipefitter-welder



David Bourbon
SIU-E
MBA, Business
EOS-HOP



Leanne Chiolero
Jewish Hospital
Nursing degree
daughter of David Chiolero,
Major Projects



Lisa Chiolero
St. Luke's Hospital
Nursing degree
daughter of David Chiolero
Major Projects



Carol Ann Dorsey
East Alton-Wood River H.S.
daughter of LaVerne Dorsey,
Employee Relations



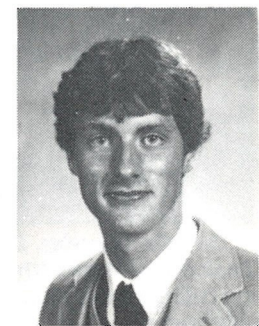
Kimberly Effinger
Alton High School
daughter of Sam Effinger,
Instrument Man



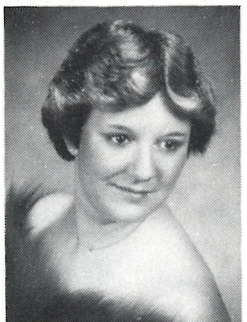
Teresa Elliott
Alton High School
daughter of D.R. Elliott,
Maintenance



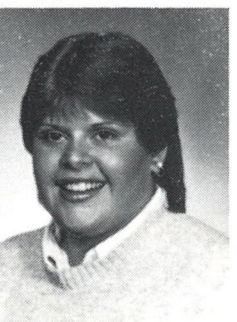
Lynette Gray
Marquette H.S.
daughter of William Gray,
Motor Lab



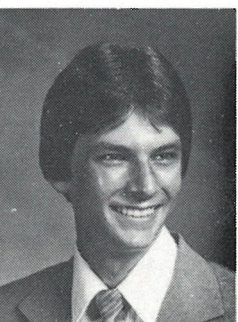
Michael Grimm
Edwardsville H.S.
son of Richard Grimm,
Customer Services



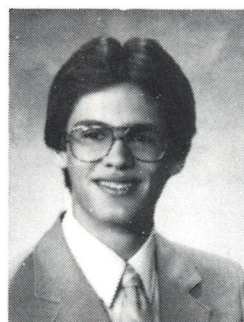
Hope Hamann
Edwardsville H.S.
daughter of Daune Hamann,
Carpenter



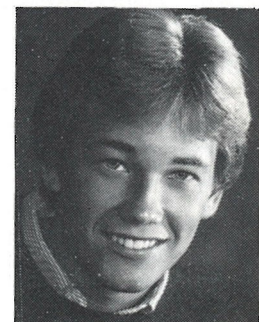
Kimberly Heuer
Rosati-Kain H.S.
daughter of Robert Heuer,
Tinner



Scott Howes
Civic Memorial H.S.
son of Ronald Howes,
Insulator



Chris Icide
O'Fallon H.S.
son of V.L. Icide,
Dispatching



Michael Jacobs
Alton High School
son of Stan Jacobs,
EP&S



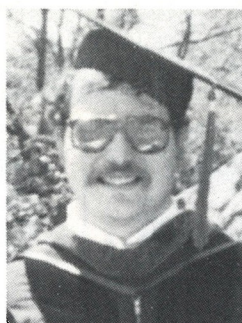
Tammy Kinder
 Jerseyville H.S.
 daughter of Terry Kinder,
 Pipefitter



Michelle Koen
 Roxana High School
 daughter of Jim Koen,
 Machinist



Lauri Machino
 Granite City H.S.
 daughter of George Machino,
 Utilities



John McGuire
 SIU-Carbondale
 J.D., Law
 son of Phil McGuire,
 Financial



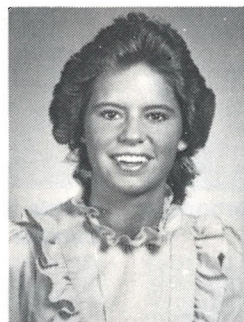
Robyn Melkamp
 Edwardsville H.S.
 daughter of Clarence Schwab,
 Boilermaker



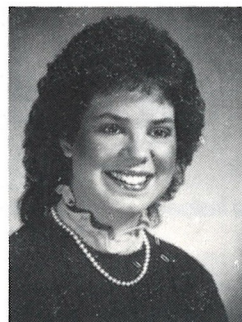
Marilu Mossman
 Lewis & Clark C.C.
 AB, Bus. Education
 daughter of Roy Mossman,
 Utilities



Kelly Sue Murray
 Edwardsville H.S.
 daughter of Ray Murray,
 LOP



Beth Naeve
 Hazelwood East H.S.
 daughter of Fred Grush,
 Ind. Relations



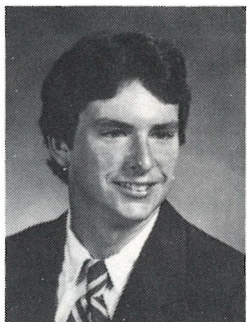
Stephanie Pohlman
 Western Ill. Univ.
 BA, Mass Communications
 daughter of Stan Pohlman,
 Dispatching



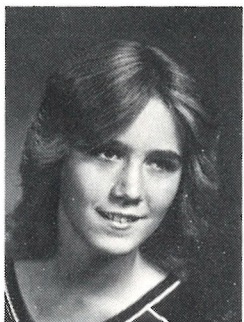
Michelle Pratt
 Red Bud H.S.
 daughter of Bob Pratt,
 Major Projects



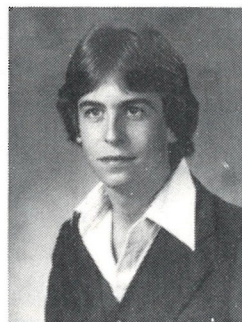
Beverly Reed
 Lewis & Clark C.C.
 AS, Bus. Admin.
 Employee Relations



Doug Rudolph
 Civic Memorial H.S.
 son of Lloyd Rudolph,
 Computer Services



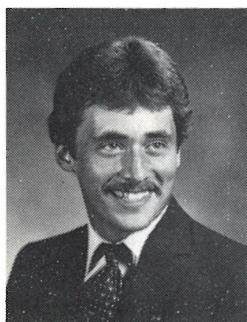
Beth Ann Rushion
 East Alton-Wood River H.S.
 granddaughter of Elmer Kitson,
 Distilling (retired)



Stephen Schwab
 Ill. State Univ.
 BA, Accounting
 son of Clarence Schwab,
 Boilermaker



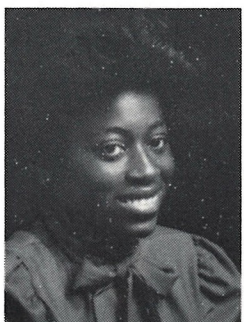
Deborah Smith
 Jerseyville H.S.
 daughter of Shelia Smith,
 Dispatching



Gary Trimm
 Civic Memorial H.S.
 son of G.N. Trimm,
 Crane Operator



Lisa Vazzi
 Worden H.S.
 daughter of Frank Vazzi,
 Security (retired)



Sherlina Washington
 Alton High School
 daughter of James Washington,
 DMK



Dana Westerhold
 Western Ill. Univ.
 BA, Law Enforcement
 BS, Sociology
 daughter of W. Westerhold,
 Administration

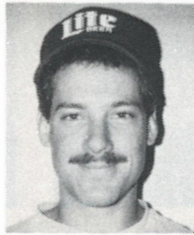


Kim Wright
 Bunker Hill H.S.
 daughter of D.R. Wright,
 DMK

New to WRMC



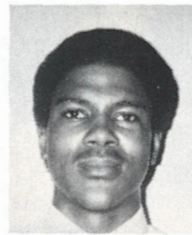
Terry Allen
Laborer



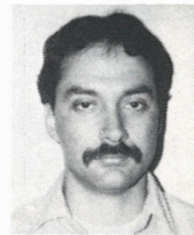
Jim Ayres
Laborer



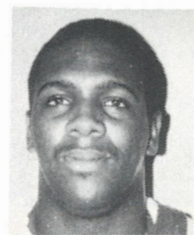
Kevin Beers
LOP-Gas



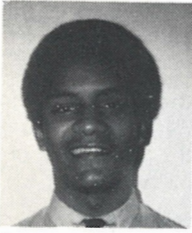
John Collins
EOS



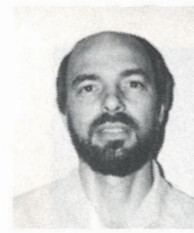
Kevin Cornejo
Electrician



Gary Cruise
Laborer



Danny Ellis
QA



Mike Hebert
EOS



Angle Hernandez
Laborer



Barbie Hollowich
Laborer



Sherree Hoskins
Financial



Jim Irlander
Laborer



Debbi Jones
Financial



Bob King
Laborer



Sherry Klaus
Instrument



Lynn Miller
Emp. Relations



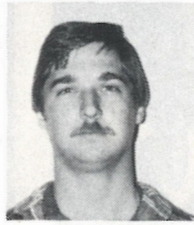
Scott Pranger
Lubes



Malinda Schoonover
Laborer



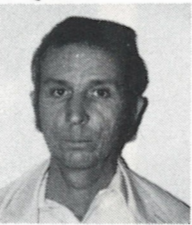
Terry Shewmake
Laborer



Steve Slomer
Distilling



Concetta Smith
Lubes



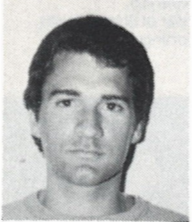
Orland Snedeker
Laborer



Rick Taylor
Laborer



Vickie Tepen
Purchasing



Terry Tiller
Lubes



Bill Wimmersberg
Laborer



David Worley
Laborer

Retirements



Tony Skrobul, Jr.
Gas
39 years



George Halaney
Financial
31 years



Frank Cummings
EC/Utilities
30 years

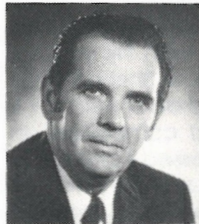
Anniversaries



Liz Halliday
EC/Utilities
40 years



Carl Brase, Jr.
Distilling
35 years



Rich Carmean
Maintenance
30 years

SHELL SHORTS

Camera Club

The SRA Camera Club will meet at 7:30 p.m. Tuesday, July 3 in the Cafeteria. The program will be "Where in the World?" by **John Rider**, professor of mass communications at SIU-E. Rider will use two projectors to show slides about his world travels. The slide/photo contest theme is "special effects" - double exposure, filters, montage, etc.

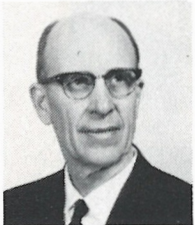
In remembrance



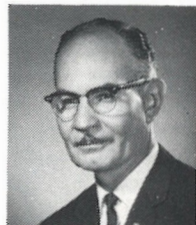
L. M. Wedner



J. J. Haufe



C. W. Baker



W. H. Helfer



W. H. Lamm

Leo M. Wedner, 82, died May 1. Mr. Wedner was a gauger specialist, Dispatching before retiring in 1966 after 21 years of service.

Joseph J. Haufe, 67, died May 2. Mr. Haufe was a shop machinist, Maintenance before retiring in 1979 after 36 years of service.

Charles W. Baker, 77, died May 10. Mr. Baker was an inspector, Engineering Services before retiring in 1966 after 38 years of service.

William H. Helfer, 76, died May 19. Mr. Helfer was an operator 1st, Cat Cracking before retiring in 1966 after 21 years of service.

Wilbur H. Lamm, 68, died May 29. Mr. Lamm was a pipefitter 1, Engineering Field before retiring in 1973 after 33 years of service.

John L. Urban, 29, died April 15. Mr. Urban was a pipefitter 2, Maintenance and had nearly four years of service. (No photo available)

Classified Ads

Wanted to buy: 1939 Golden Shell pocket watch. **Chuck Maguire**, ext 2891.

For sale: Dash pad for Olds Cutlass Cierra - blue. Chassis service manual for '83 Cierra, Firenza, Omega. Complete with electrical information. **Steve Rogers**, 314/839-4035 or ext. 2354.

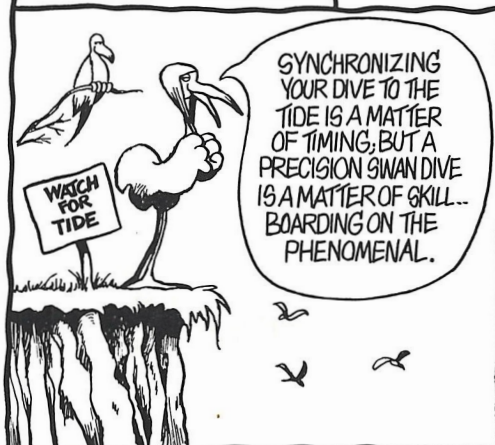
For sale: Power antenna for Datsun 280 ZX, \$25. **Jim Sauerwein**, 618/377-6347.

For sale: IBM Selectric III correcting typewriter. Two-years-old, excellent condition. **Carla Culp**, 656-5665.

For sale: Silver-plated sherbets and goblets, 12 each, never used, three-years-old, \$165. **Lucille Maloney**, 618/656-2144

WOODY & CLYDE

WOODY & CLYDE ON VACATION



Shriner dedicated to helping children

"I like to help people, especially children. For me, that is what being a Shriner is all about." With this brief statement, Complex insulator **Merle Oettle** summarized his mission with the Shriners as one of being of service in any way he can.

Oettle, a 20-year member of the Shriners East St. Louis Ainad Temple, is attached to the hospital unit. In this capacity, he conducts tours of the organization's hospital for crippled children in St. Louis, and makes presentations and shows films to various civic groups. His message? The availability of orthopedic and burn care services provided by Shriners hospitals and burn institutes across the country. Care is free to children whose parents are unable to pay.

"Although I am semi-retired from making the presentations, I still keep as active as possible with the hospital unit," said Oettle. "After more than 100 presentations over a 17-year period, I figure it is time for the younger men to take over."

Oettle deserves a rest. During February 1971, he and four other Shriners drove nearly 5,000 miles throughout Illinois and Missouri to talk to groups. "No group is too small or large as far as we are concerned," he said. "Where-



Merle Oettle

ever there are people who want to learn about the hospital services, then our unit will talk to them."

One of the highlights of Oettle's association with the Shrine has to do with a three-year-old boy named Mark Trusty, of Edwardsville. Since birth, Trusty has been afflicted by a disease known as osteogenesis imperfecta, more commonly called "brittle bone" disease. A series of xrays confirmed that while still in his mother's womb, Trusty had a broken collar bone and a femur. Two weeks after he was brought home from the hospital, he broke an arm and a week later, a leg.

"When Mark was only three-months-old I met with his parents and explained how Shriners Hospital in St. Louis could be of help to him," Oettle said. "They completed an application, I witnessed it and turned it over to the hospital. Within five days the Trustys received word that the application was approved.

Treatment began immediately and Trusty has since made steady progress. There is no known cure for the disease, yet treatment and therapy have enabled the boy to become mobile with the aid of a special walker.

"The family keeps in touch with me and lets me know how Mark is doing," Oettle said. "They never fail to express their thanks to the Shrine. That makes me feel real good."

Bulk Rate
U.S. Postage
PAID
Wood River, IL
Permit No. 229

Shell Oil Company
P. O. Box 262
Wood River, Illinois 62095



**WOOD RIVER
REVIEW**

Published monthly for
employees and pensioners
of Shell Oil Company
in Wood River, Illinois

David B. McKinney, editor
(618) 254-7371,
ext. 2468