



WOOD RIVER

VOL. 49, NO. 5, APRIL 1986

review

Richardson, Dillard and Braus Visit WRMC

On April 1, **Frank Richardson**, executive vice-president - Products, **Gary Dillard**, vice-president - Manufacturing & Technical and **Jim Braus**, general manager - Engineering Products, visited the Complex. Their visit consisted of tours and conversations with various individuals around the Complex.

Highlights of their visit included tours of various Major Projects work including Distilling Unit 1, Distilling Unit 2's control room, the Cat Crackers, Maintenance Shops, the Hydrocracker, the Steam Methane Reformer and the Packaged Lubricants Warehouse.

During a noon luncheon Richardson discussed various topics concerning the manufacturing business in Shell, and WRMC personnel had the opportunity to ask questions and get firsthand answers. Complex employees were very pleased to welcome our Head Office visitors and show off WRMC facilities.



Looking on ...Frank Richardson, executive vice-president - Products (left), Gary Dillard, vice-president - Manufacturing & Technical (2nd from the right) and Jim Braus, (far right) general manager-Engineering Products listen as Bill Quinn, process manager-Compounding (foreground), explains the new plastic gallon line. Our Head Office visitors toured WRMC facilities and Major Projects work.

TEN & OVER BAR-B-Q



Be sure to mark your calendar
for June 14th!!!

The Annual Ten & Over
Bar-B-Q will be held Saturday,
June 14, 11:00 a.m. to 7:30 p.m.
at the American Legion in
Edwardsville.

GREAT FOOD, FUN AND GAMES!

Pieces Of Change

In the past few years 'change' has become a real issue for employees at WRMC as well as for our communities, the country and the world. Some examples are the space age, the oil crisis, the information and computer revolution, etc. Recently, and closer to home are changes, restructuring and buyouts in the oil industry, widespread refinery closings, dropping oil and gas prices, computerized process control, MPO, "Team Management", BPU's (Basic Production Units), the electronic office and the list goes on and on.

It's all sort of overwhelming but it's not going away. The intent of this feature, along with other similiar features in the future, is to help make a change more understandable, if not more comfortable. The first piece is from Communications World magazine and one that should give a perspective for "Pieces of Change".

People don't like to change the way

Garage Mechanics Celebrate 15 Safe Years

On March 11, 1986 the garage mechanics achieved 15 years without a lost time accident. This represents well over 400,000 man-hours. The garage mechanics are responsible for maintaining over 500 pieces of automotive equipment including scooters, cars, pick-ups, tank trucks, hydraulic cranes and a 4100 Manitowac.

The garage mechanics do more than the ordinary tasks that most service stations, garages or dealerships perform. A large percentage of their work is heavy duty maintenance from changing engines and transmissions to repairing large cranes.

The exposure and potential to unsafe conditions is certainly present which says that the mechanics have paid attention to what they are doing to achieve this milestone. Congratulations garage mechanics and reach for another 15 years!

At Right

These two groups of garage mechanics celebrated working 15 years without a lost time accident.

they do things--even highly intelligent people. Change is not comfortable. It makes them uncertain and uneasy. The fact that a change seems reasonable and logical makes little difference. It's still a change, something they are not accustomed to. And who knows how it will work out in the end? Why not leave well enough alone?

The number of well-educated, prestigious people who have bitterly opposed vital changes in our lifestyle is almost unbelievable. General Billy Mitchell had to fight the entire hierarchy of the Army and Navy -- and get court-martialed in the process -- before he

could convince Congress to build an Air Force. Lt. William Sims, U.S. Navy, had to go around his superiors and write directly to President Theodore Roosevelt before he could get the Navy to adopt a superior method of aiming its guns, a method already proven by the British.

That same sort of opposition to change exists today. Most people are instinctly opposed to new ideas that might alter their lives. Yet, at the same time, change is absolutely essential. Countries, companies, and people must continue to experiment with new ideas. Those that don't, find themselves falling behind.





Stewart Recounts Close Call

Mark Stewart, operator in the Gas Plant, points to the steam line that ruptured and sprayed pressurized steam onto his safety glasses. Stewart avoided any serious injury because of the safety glasses and side shields he was wearing.

"I would be wearing a patch over one eye if I hadn't been wearing safety glasses and sideshields that day," recounts **Mark Stewart**, Gas Plant operator.

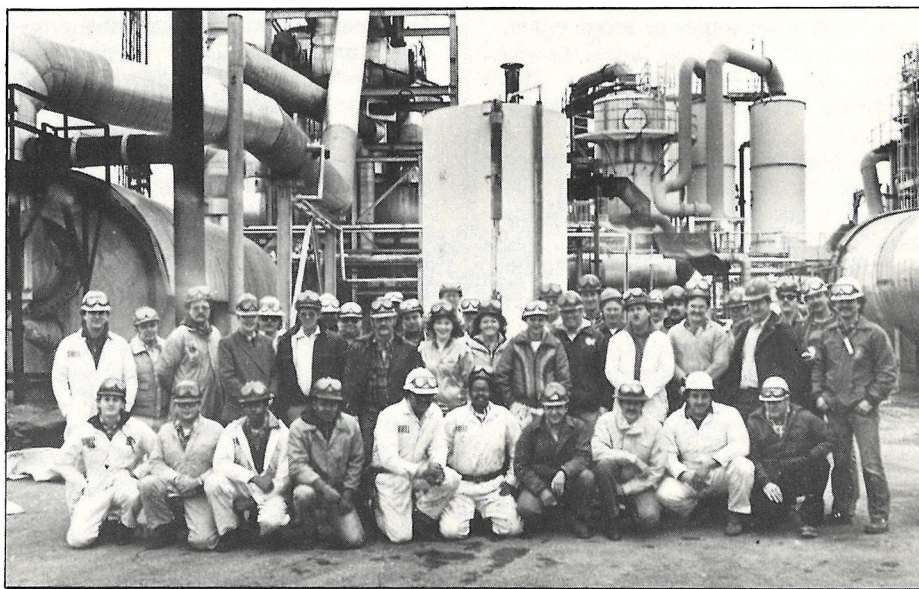
On April 10, Stewart was opening a permanently attached aspirating steam valve when a steam line at eye level ruptured. High pressure steam sprayed Stewart's safety glasses and luckily that was all.

"All I got were minor burns on my cheek. The safety glasses and sideshields kept the steam from getting my eyes, without them I'm sure the steam would have done major damage to my eyes," says Stewart.

The Gas Plant established a safety glasses policy in July 1983. The policy states that all employees in the Gas Plant area must wear safety glasses with sideshields.

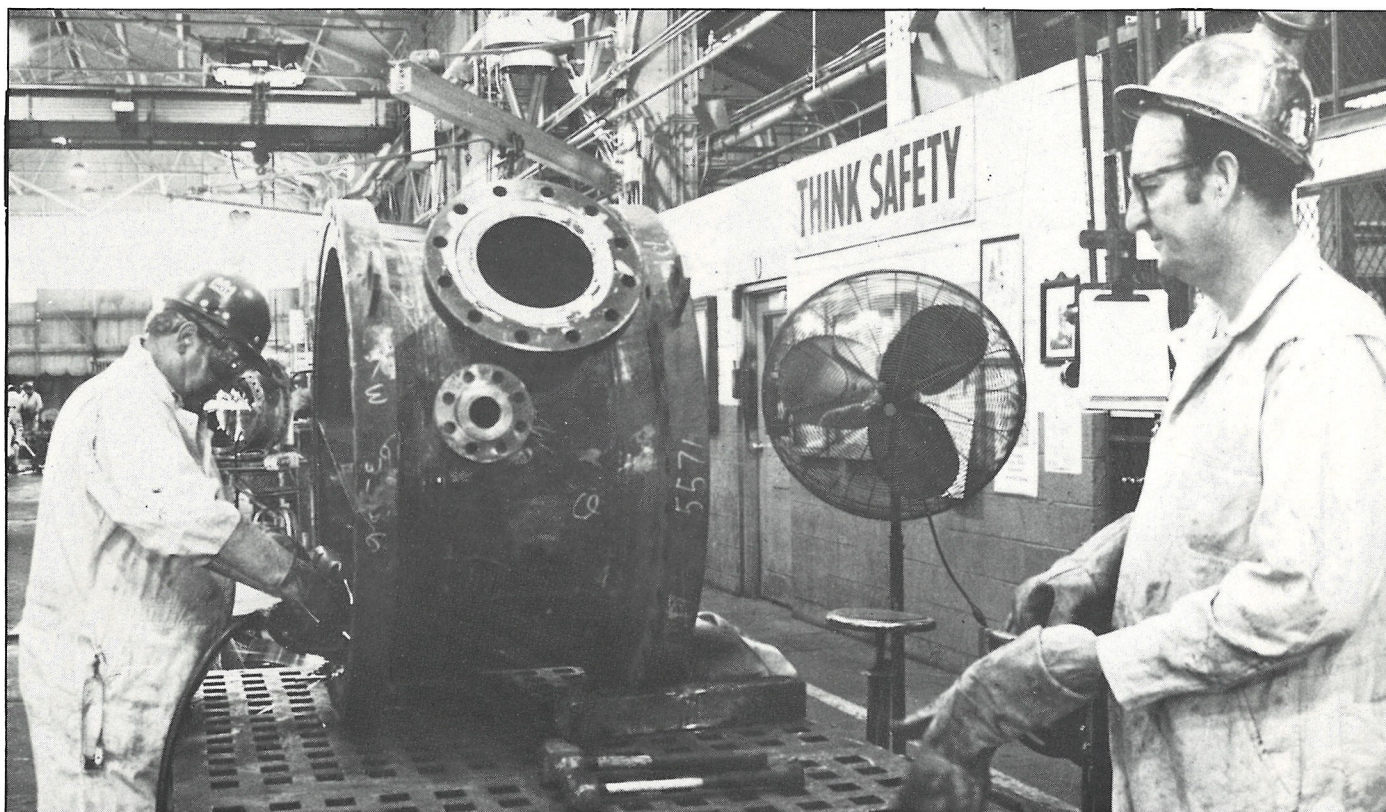
"This is the first incident in the Gas Plant that so clearly prevented a serious eye injury and demonstrates the need for a safety glasses policy," says **John McNally**, process manager - Gas Plant.

"I'm a big believer in safety glasses, especially now, and I don't mind telling people," says Stewart.



Acid Plant Shutdown—No Nurse Cases

The employees pictured above completed the Acid Plant shutdown which ran March 5 - 21 without a single first-aid case. The work was completed on days along with the ongoing zone maintenance. The Plant was shutdown to overhaul the main blower and to drop and screen the converter catalyst. Congratulations and keep up the safe work!



Boilermakers, Mike Semanik (left) and Leo Raynor (right) are shown here in the Boilermaker Fab Shop grinding the inside of a channel head. Shops are used primarily to support the Maintenance crafts in large jobs, revisions, upgrades and in some cases training.

MAINTENANCE

"We have as much or more talent, pride and ambition in our forces, as any other location in Shell," says **Jim McBride**, superintendent - Maintenance.

The Maintenance department which houses 11 different crafts and 854 people is the largest and one of the busiest departments at WRMC.

"We are basically a service organization whose primary responsibility is to fix what's broken," adds McBride.

That's quite a load considering that there are hundreds of pumps, miles of pipe and thousands of instruments. So how does an organization so large and with so much work manage to get things done?

"It takes constant communication and training. Those two things, coupled with some of the highest skill levels of anywhere I've ever been, enable the Maintenance department to complete a tremendous amount of work," says **Jim Deeter**, manager - Maintenance Shops/Administration.

Currently, the Maintenance department is initiating a new maintenance

effectiveness effort and innovative programs and approaches to planning. Along with that, they are also participating in Major Projects work and run-and-maintain shutdowns.

"Although we have a lot of activities going on, our primary goal right now is to improve our safety record. On March 1, we began a new Maintenance safety program that was designed specifically for WRMC by Safety Resources, Inc.," says McBride.

"The new program emphasizes two-way communications, more frequent safety meetings and participation," says **Larry King** - insulator.

"The program is trying to change attitudes about safety and is really wrapped around doing something about safety," adds **Dave Halliday** - truck-driver.

Another way Maintenance is stressing safety is through the Maintenance Safety Study Group, comprised of 10 Maintenance representatives who meet weekly to share input from the crafts about potential safety hazards around the Complex. The group discusses the problems directly involved with Mainte-

nance and implements solutions that will remedy the problems as quickly as possible.

Planning maintenance work is a large responsibility and those responsible for planning in Maintenance are now turning to state-of-the-art tools such as MUTS (Manpower Utilization and Tracking System) to assist in planning work more efficiently.

"We use MUTS to project manpower for the next year. Right now we are trying to combine three different programs in an effort to extract time and relate that time to dollars," says **Jim Kossina**, Planning foreman.

Another Maintenance team, The Central Maintenance Study Group which includes representatives from WRMC crafts and staff, is currently studying several options and forming recommendations that will create a new profile for the Maintenance organization. Part of the new maintenance organization will include a modified Central Maintenance organization similar to a basic production unit (BPU).

"Right now we are trying to determine how the new Central Maintenance

group will interact with the BPU's," says **Bob Ely**, - maintenance supervisor-LOP.

"The group also is broken up into smaller sub-groups that look at training, manpower and craft skills," adds Ely.

"The Central Maintenance Study Group will give crafts the opportunity to shape the future for Maintenance. It's a slow process that touches on some sensitive areas but with craft input we've come a long way and we're making real progress," says Deeter.

Involvement in shutdowns, both MPO and run and maintain related, is another key activity of the Maintenance department. The Maintenance department is making strides to maximize the Shell forces that are used on shutdowns.

Examples of their efforts were shown in the Steam Methane Reformer, Acid Plant, DHT, CAU, and VBU shutdowns and portions of the Cat Cracker 1 and 2 shutdowns.

"Shell crafts familiarity with unit processes, equipment and safety procedures enables them to do a good job during shutdowns," says **Ralph Elliott**, maintenance manager - Shutdowns and Projects.

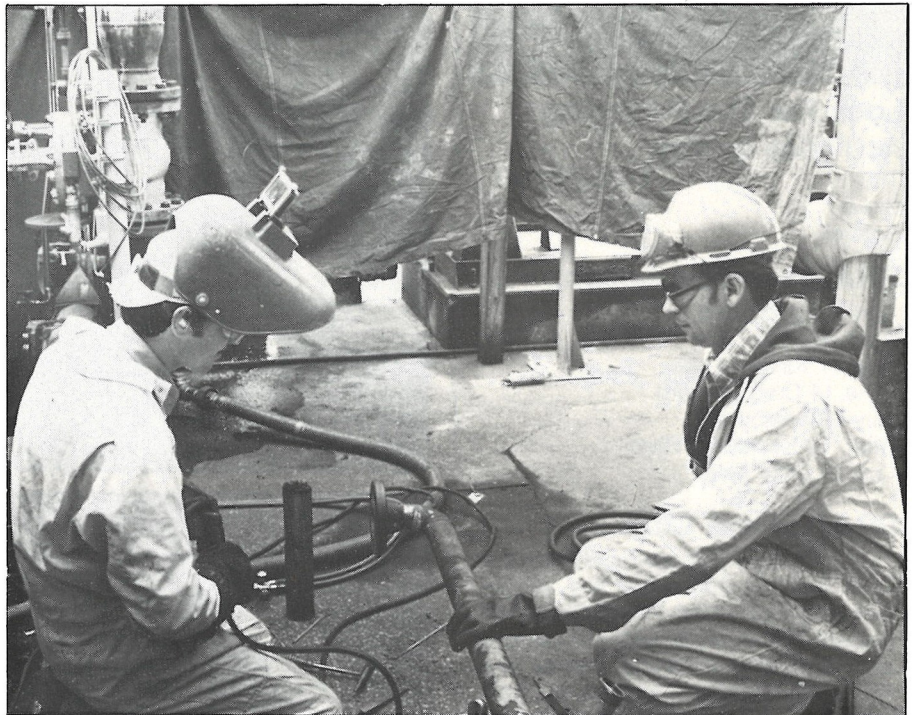
"In fact, when you look at the last year or so there were several shutdowns where there were no nurse cases and that's something to be very proud of," adds Elliott.

"We take a lot of pride in the work that we do during shutdowns because we're the people who have to maintain the equipment on a day-to-day basis," says **Mike McVey** - boilermaker.

Jim Darr, Bob Eagan and Paul Weinmann are some of the Maintenance foreman involved in MPO/Maintenance activities. They assist shutdown planners like **Howard Green** in coordinating Shell maintenance and contractor activities during pre-shutdown and shutdown work. After MPO is complete, they along with many other Maintenance employees, will return to the Maintenance organization. The regular shutdown group in Maintenance is primarily responsible for maintenance or run-and-maintain shutdowns.

Shops is another important segment of the Maintenance department. Each craft has a Shop which provides a special service and support for Maintenance activities including shutdowns. Shops are also used for major pieces of work, revisions, upgrades and in some cases training.

"Yes, our primary objective is to fix what's broken and that sounds simple enough. But to do that, it takes a tremendous amount of skill, expertise and pride. I don't think the Maintenance department is lacking in any of those areas," says McBride.



Jerry Hall, pipefitter (left) and Russ Shireman, pipefitter helper (right), are shown here working during the CAU shutdown. Maintenance crafts are responsible for the bulk of Maintenance work completed during run and maintain shutdowns.



Jim McBride, superintendent - Maintenance, leads a discussion with the Maintenance Safety Study Group. The group meets weekly to suggest solutions to safety concerns that Complex employees raise.

SRA Happenings

Look For The Following Activities In May

Trap Co-ed Softball
 Skeet Golf
 Softball

SRA Bass Tournament

April 5 Egypt Lake
 April 26 Otter Lake
 May 17 Kinkaid Lake
 June 14 Crab Orchard
 July 12 Shelbyville
 Sept. 13 Kaskaskia River
 Oct. 11 Otter Lake

SRA Camera Club

The Camera Club will meet June 3 at 7:30 p.m. in the south end of the cafeteria. This month **Frank Gould** will present 35 minute, 90 slide PSA lecture on "Reflections in Water; Sports and Perceiving Texture." The Slide and Print contest for June will feature "moisture", water in any shape, form or quantity.

Announcement

J.D. Slaton will host an Open House reception for his father **Duard Ward** on May 4, 2-5 p.m. at his home 1045 George, Alton, Illinois.

Deadline June 1

Graduate Issue Planned

The 'Review' will honor graduating sons and daughters of Complex employees and retirees in the annual Graduates Issue published in June. Also Complex employees or spouses graduating from colleges will be included in the special issue.

Graduates must send a photograph (with the student's name on the back)



SRA Easter Egg Hunt a Success

March 22 was an exciting day for many Shell employees children as they met the SRA Easter Bunny, Kelli Mathias, and had a rousing easter egg hunt. The easter egg hunt is sponsored by the SRA annually and is always a lot of fun for adults and children alike.

Classified Ads

For Sale: 1965 Ford Falcon Ranchero, perfectly restored, show car quality \$3,500, call **Mike Tomlanovich** on ext. 2651 or 254-5759.

For Sale: 2 John Davidson large leg end tables, 1 coffee table, 1 etagere, 4 chairs with leather seats and backs, price negotiable call Barb at 656-9429 after 5:30.

For Sale: Kenmore 15,000 BTU, 220 volt window air conditioner, \$350. Call 466-1617 or ext. 2802 and ask for Jerry.

For Sale: Beautiful chalet of 21 acres, half wooded, stocked lake. Excellent location - 60 miles from St. Louis, 40 miles from Springfield, Illinois and 1/2 mile to Lake Lou Yeager in Litchfield, \$139,500, call 217-324-2551.

For Sale: Three bedroom/2 bathroom house, exterior maintenance-free and in immaculate condition. Large family room, sunken living room with fireplace and formal dining room, \$38,900. Call Dottie 259-2101.

GRADUATE'S NAME _____ HIGH SCHOOL _____ COLLEGE _____
(please check)

EMPLOYEE - PARENT'S NAME _____ DEPARTMENT _____ WORK EXT _____

EMPLOYEE PARENT'S ADDRESS _____ PHONE _____

HIGH SCHOOL _____ COLLEGE _____

DEGREE _____ MAJOR/MINOR _____

SCHOOL ACTIVITIES - HONORS _____

FUTURE PLANS (COLLEGE AND MAJOR OR WORK PLANS) _____

Deadline for submission is Monday, June 1.
 Attach photo of graduate with name on back

Mail to: **Becky Doreck**, Editor
 P.O. Box 262
 Wood River, IL 62095

In Remembrance

Chris Lavick, Sr., 84 died March 5. Mr. Lavick was an operating assistant, Compounding, before retiring in 1965 after 42 years of service.

Mark Williams, 84, died March 11. Mr. Williams was an operator 1st, Distilling, before retiring in 1963 after 37 years of service.

Leland Sugg, 71, died March 26. Mr. Sugg was a yardman, Engineering Field, before retiring in 1974 after 31 years of service.

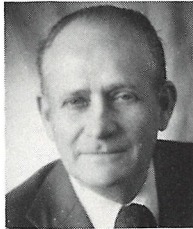
James Cannedy, 82, died March 20. Mr. Cannedy was a laborer, Engineering Field, before retiring in 1963 after 30 years of service.

Lou P. Swanson, operations foreman, Enviromental Conservation/Utilities, passed away March 25, 1986. Mr. Swanson had 16 years of service with the company.

Retirements



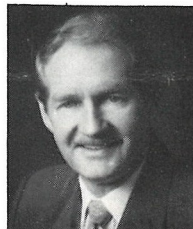
Lamoine Schoenleber
maintenance foreman
Maintenance
35 years



Ed Looser, Jr.
operator 1
HOP/Aromatics East
34 years



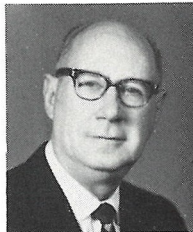
Bill Connell, Jr.
accounting assistant
Financ./Cust. Services
39 years



Dave Rook
special assignment
Safety & Ind. Hygiene
30 years

Correction

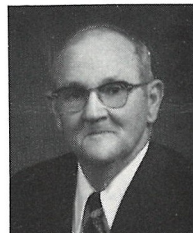
Mr. Rook appeared in last month's 'Service Anniversary' section. He should have been in the 'Retirement' section.



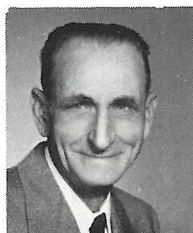
C. Lavick, Sr.



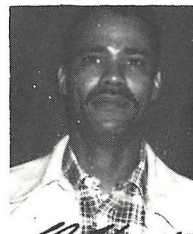
M. Williams



L.M. Sugg



J. Cannedy



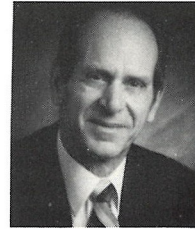
L. Swanson

New To WRMC

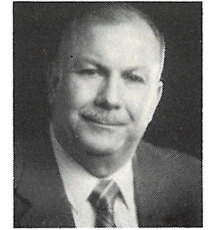


Part Time
Melody Duggan
Financial

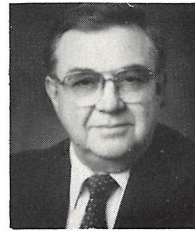
Service Anniversaries



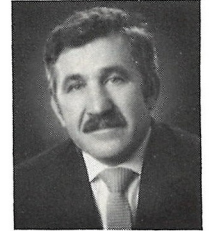
Jack Heiderscheid
operator 1
Utilities
30 years



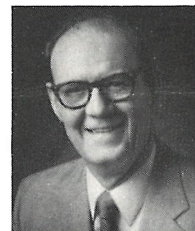
Carl Bailey
operator 1
LOP/Cracking
30 years



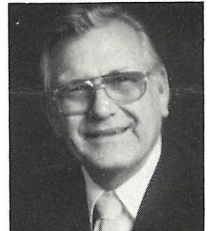
Dick Burton
auditor
Financial/Auditing
30 years



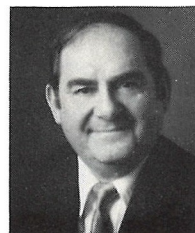
Larry Ferrari
craneman 1
Maintenance
25 years



Harold Hawkins
sr. safety inspector
Safety & Ind. Hygiene
30 years



Jack Crocker
sr. inspector
MPO Operations Support
35 years



Frank Pinkas
sr. inspector
EOS/Pressure Equip.
30 years

MY STORY / PHOTO IDEA IS:

SUBMITTED BY:

CLIP & SEND TO EDITOR, MAIN OFFICE

Use Proper Eye Protection

(See related story, "Stewart Recounts Close Call")

Did you ever hear a co-worker state that they couldn't get used to wearing safety glasses and goggles? It's true. They like many other people who must wear safety glasses, find it difficult to get used to wearing safety glasses or goggles. It does take a while to get accustomed to them, but eventually both glasses and goggles become habitual where there are potential hazards to the eyes. Plastic goggles (full cover) offer protection against chemical splash, dust, mist and flying particles. They are ideal in the protection of the eyes when using a jackhammer or other impact tools on concrete.

Just because certain glasses have thick lenses doesn't mean that they are shatterproof safety glasses.

Face shields have their purpose in protecting the face under certain conditions, but when there are flying particles that could conceivably fly beneath the shield, goggles should also be worn as an extra precaution to protect the eyes. Both are recommended when handling hazardous chemicals.

Contact lenses, by no means, are a substitute for safety glasses or goggles. It is possible for materials to work beneath a lens and cause serious injury. Wearing contact lenses is discouraged within the Complex and they are prohibited when wearing a full face respirator.

In the event an eye injury is incurred, here are a few tips to remember:

-First aid for Chemical Burns involves non-stop flooding of the affected eyes with low pressure water for 15 minutes while eyelid is held open.

-Speck in the eye requires pulling the upper eyelid down over the lower lid and

rolling the eye upward, allowing tears to wash the object out.

-Blows require immediately applying cold compresses to the injured eye for 15 minutes.

-Cuts require bandaging the eye lightly (if possible use sterile gauze) and see a physician at once.



Health & Safety Committee Celebrates 17 Years

The Health and Safety Committee celebrates 17 years of ongoing service, April 17. The committee is comprised of hourly employees who meet with staff representatives to review safety and health matters that affect the Complex.



Shell Oil Company
P. O. Box 262
Wood River, Illinois 62095

Published monthly for employees and pensioners of Shell Oil Company in Wood River, Illinois

Becky Doreck, editor
(618) 254-7371,
ext. 2168

First Class
Presorted
U.S. Postage
PAID
Wood River, IL
Permit No. 230

RL TURNER

RR 3 BOX 264
EDWARDSVILLE

IL 62025