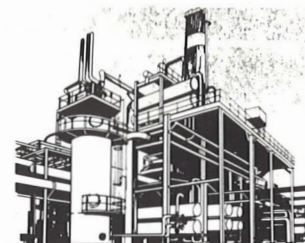




WOOD RIVER REVIEW

WOOD RIVER MANUFACTURING COMPLEX



VOL 46, NO. 10 OCTOBER 1983

Poster contest winners named

The 12 winners in the annual safety poster contest were selected Sept. 8 from a total of 70 entries. Employees' children and grandchildren ages 5-13 submitted posters making use of the theme "Safety For All Seasons - Winter, Spring, Summer, Fall." Winning drawings will appear in the 1984 Complex calendar due for publication later this year.

Manager **Bill Durland** presented winners with \$50 U.S. Savings Bonds during a reception Sept. 17. Additionally,

each child who entered a poster received a gift certificate to a local restaurant.

Winners in the 5-7 age group are: **Timmy Crainick**, son of **G. J. Crainick**, Utilities; **Addie Dallas**, daughter of **L. E. Dallas**, Maintenance; **Elena Tailman**, daughter of **K. T. Tailman**, Maintenance; and **Tiffanye Bond**, granddaughter of **Shirley Allen**, Maintenance.

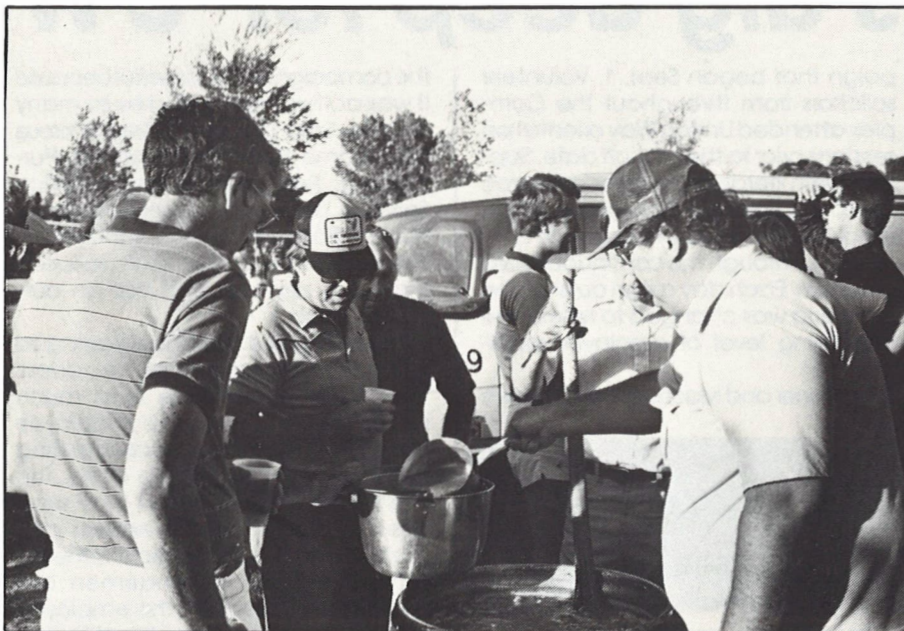
In the 8-10 group, the winners are: **Stephanie Molkenbur**, daughter of **D.**

G. Molkenbur, EP & S; **Tylie Tailman**, daughter of **K. T. Tailman**, Maintenance; **Billy Franke**, son of **S. C. Franke**, Yield Improvement Program; and **Jason Denton**, son of **M. R. Denton**, Safety & Industrial Hygiene.

Winners in the 11-13 age group are: **Theresa Sherwood**, daughter of **J. Sherwood**, Dispatching; **Brent Widaman**, grandson of **L. D. Bush**, Maintenance; **Bruce Nolan**, son of **E. W. Nolan**, Maintenance; and **Brian Budny**, son of **F. M. Budny**, Maintenance.

Contest judges were **Jim Grizzle**, Safety & Industrial Hygiene; **Wanda Wallace**, art instructor for the Roxana District; and **Mike Smith**, department of art and design, Southern Illinois University at Edwardsville.

The Complex poster committee was comprised of **Don Beiliss**, **Janice Rollins**, **Earl Nailor**, **Lou Swanson** and **Dave McKinney**.



Steve Franke dishes out gumbo during the WRMC Engineering Picnic on Sept. 16. About 130 employees turned out at Belk Park for the annual picnic which featured sporting activities and plenty of food and refreshments.

SRA FALL DINNER-DANCE TICKET RESERVATION

Name _____ Emp. No. _____

Address _____ Phone _____

No. of Tickets

— \$ 7.50 Each SRA Member _____ Total Tickets

— \$10.00 Each Non-Member _____ Total Cost

SRA dance planned

Make plans now to attend the annual SRA Fall Dinner-Dance on Friday, Nov. 4 at Augustine's, 1200 Centreville Ave., Belleville, Ill.

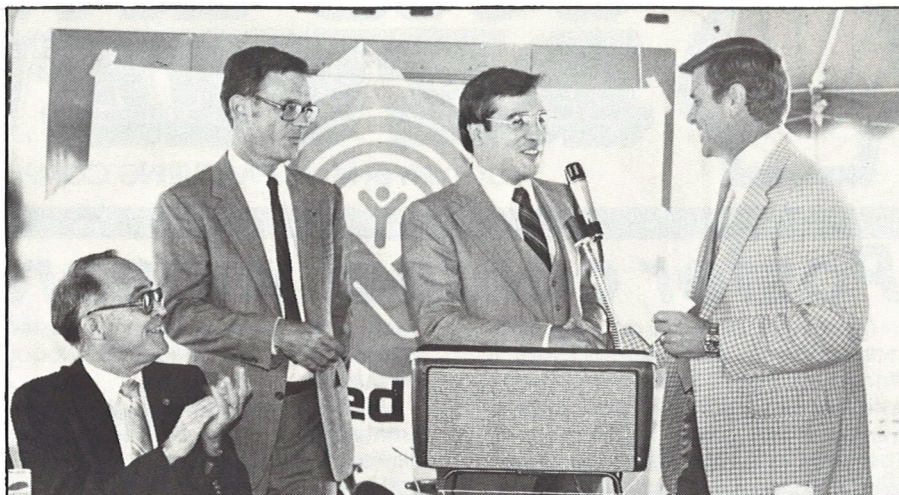
The optional buffet dinner will be served from 7-8 p.m. and will consist of chicken, roast beef, mostaccioli, au gratin potatoes, tossed salad, garlic bread, coffee, tea, milk and a choice of either pie, cake or sherbet. The cost for dinner and the dance is \$7.50 for SRA members and \$10 for non-members.

Dancing is slated from 8:30 p.m. until 12:30 a.m. with music by Day-break. Dance-only tickets may be purchased at the door for \$2 each SRA member and \$4 for each non-member. Plus, beer will be available at \$1 a pitcher and set-ups are free.

Reservations for dinner must be made prior to Oct. 28. Use the accompanying order form and send a check or money order—no cash—payable to SRA, 20 Foreman Drive, Glen Carbon, Ill. 62034. Reservations will be confirmed at the door.



Delight is evident on the face of Ron Winkler, right, chairman of the River Bend United Way campaign, as he accepts Shell's corporate donation from Bill Durland. The \$82,000 gift is the largest ever for River Bend.



Wood River's Bill Deubner and George Machine, standing left and center, are applauded after announcing results of the Complex United Way campaign at the River Bend kick-off luncheon Sept. 15. Employees' pledges and donations to River Bend were more than \$81,000.

Employees dig deep for UW

"People Helping People" was the theme of this year's Complex United Way campaign and employees took the meaning to heart. When the numbers were tallied, approximately \$90,000 was raised in pledges and donations from 68 percent of the employees, up from 53 percent just a year ago. The dollar amount exceeded the 1983 campaign by 22 percent.

Co-chairmen **Bill Deubner**, Purchasing, and **George Machine**, Utilities, coordinated a two-week cam-

paign that began Sept. 1. Volunteer solicitors from throughout the Complex attended United Way orientation sessions prior to the kick-off date. Supplied with literature and pledge cards, the 80 solicitors personally approached employees who were not already contributing through the continuous card program. Each day a sign outside the cafeteria was changed to reflect the increasing level of employee participation.

Deubner and Machine both believe

the campaign was successful because it was actively supported by so many people. Said Deubner, "Tremendous help came from Maintenance, Purchasing, Personnel, Financial-Office Services, Safety & Industrial Hygiene, Public Affairs and other organizations. The department and craft solicitors played a key role and did an outstanding job."

Machino said it is encouraging to know that people do care. He added, "At a time when there is so much need, the results of this employee campaign show how people pulling together can get the job done. The many recipients of United Way services may not be able to express their gratitude, but rest assured it is there."

The Complex co-chairmen announced the results of the employee campaign at the River Bend United Way campaign kick-off luncheon held Sept. 15 in Alton. Approximately \$81,000 of the amount raised will go to River Bend. The remaining \$9,000 is to be disbursed to other local United Way offices and agencies as designated by contributing employees.

Also at the luncheon was **Bill Durland** who presented River Bend United Way campaign chairman Ron Winkler with the Shell corporate gift of \$82,000. The contribution represents a 10 percent increase over Shell's gift last year.

"This is the largest corporate donation ever received by River Bend United Way," Winkler said, upon accepting the check. "This is a great way to start off our campaign."

The Review in review

Highlights from past issues

Five years ago (October 1978) - Cat Cracker-2 is down for maintenance four years, four months and three days after its last major shut-down—a record run.

The Engineering team has won the SR Refinery golf championship. Members are **Ron Adams**, **Bill Donkervoet**, **Joe Kingery**, **John Propst**, **Ray Robinson**, **Stan Smith**, **Lee Speicher**, **Dick Sunkel** and **Ferd Weise**.

10 years ago (October 1973) - This month **Paul Hofmeier** reached the 45-mark with Shell. Most of his service has been in Alkylation.

Installation of three new heat exchangers at Hydrodesulphurization Unit No. 1 is significantly reducing the consumption of furnace fuel at the Refinery.

25 years ago (October 1958) - Employees donated 481 pints of blood during the Bloodmobile visit.

Two Research Lab workers, **W. Reynolds** and **E. Larson**, co-authored an article for the August issue of "Paint and Varnish Production."

Today, Wood River Refinery serves a nine-state area with more than 1,100 petroleum products.

40 years ago (October 1943) - The War Bond Drive recently completed at the Refinery increased the payroll subscriptions by nearly 10 percent and total employee's participation to 96 percent.

Twenty-six years ago (1917) construction began on what was to become the Wood River Refinery.

Dental plan procedure outlined

Not all Shell Dental Assistance Plan benefit claims are processed the same—some take longer than others. With that in mind, here's a summary of what happens once you or your dentist mails the claim to the Connecticut General office in Sherman, Texas.

The most common claim and the easiest to process is the "clean claim." It could include charges for teeth cleaning, oral exams, x-rays, fillings, root canals or certain gum treatments.

When your claim analyst receives a "clean claim," processing begins immediately since all necessary information is generally on the claim form. First, a microfiche copy of your claim is made to be kept on file. Next, your dentist's charges are entered into the claim processing computer. The charges for each service are compared against the reasonable and customary maximum allowed in your geographical area. Finally, any deductible and the percentage of benefits paid by the plan are calculated.

Your claim is ready for payment. Electronic transmission speeds it to Hartford, Conn., where the benefit payment check is printed and mailed.

The time involved? Considering mailing time, about two weeks from the time your claim is sent until you receive a benefit check.

If you have major restorative dental work done, such as crowns, bridges or dentures, it may take longer to receive a benefit payment because the Den-

tal Assistance Plan must ensure benefits are paid only for procedures considered adequate and appropriate in accordance with dental practice standards.

How is "adequate and appropriate" determined? One source is CG's record of dental work performed on your teeth. Since the plan has been effective for only three years, the information is often limited. In that case, CG will request x-rays or a narrative description of your teeth from your dentist. During the time it takes to make the request, no paperwork can be processed. Some dentists automatically send x-rays along with a claim for major restoration work, which saves time.

When the information is received, the claim goes to a trained dental technician who determines in most cases if dental work meets the criteria of "adequate and appropriate." If further review is needed, the claim is sent to one of three dental consultants — employed by CG — who review complicated claims. They may request more detailed information from your dentist.

After all reviews have been completed, the claim is processed for payment. About four or five weeks is standard to process a claim when x-rays are requested.

The claim may be held up longer if the dentist doesn't respond to the

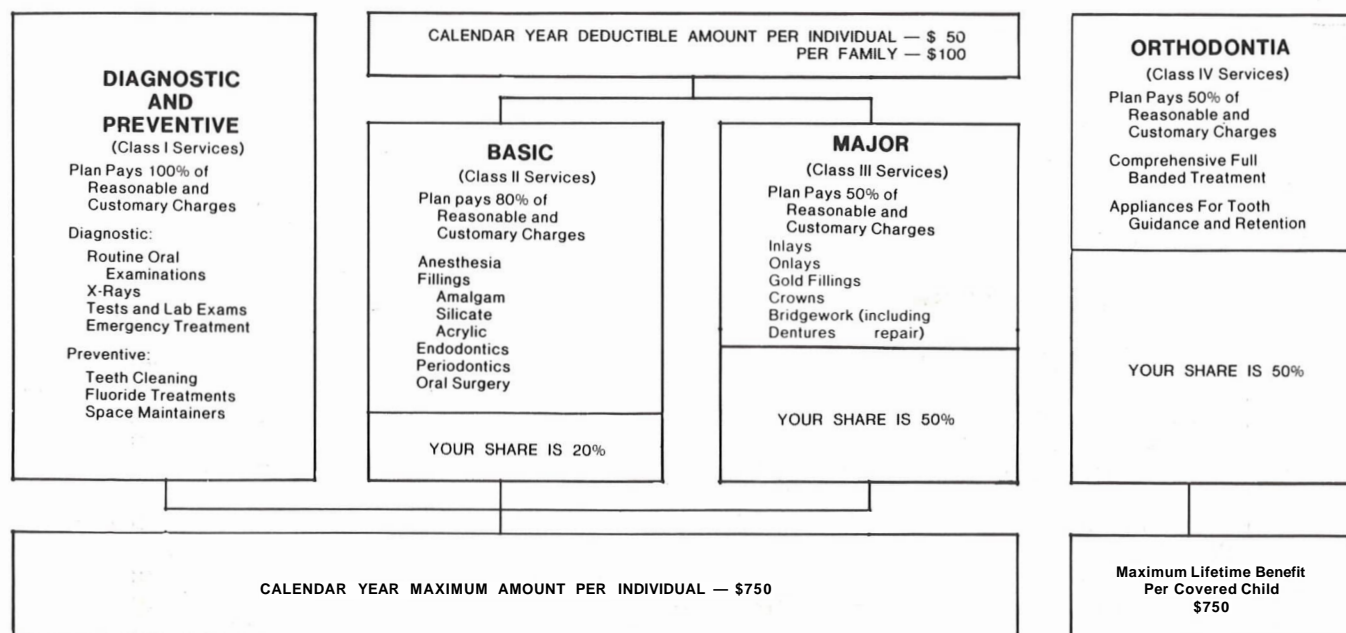
request. In that case, a follow-up request is sent one month later. If there is still no word after an additional month, you are notified the claim will not be processed further until the requested information is received. Fortunately, very few claims reach this point.

Many people file pretreatment reviews, which are handled like regular claims except no benefit payment is made. Proposed dental work is reviewed as though it had been completed; this assures you and your dentist of Dental Assistance Plan coverage before the work is performed. The time it takes to process pretreatment reviews depends on how much information is needed to determine if the work is "adequate and appropriate," and on the time it takes to receive the information.

You can speed the process along by asking your dentist to send x-rays of the teeth needing repair along with the claim when a crown, bridge or denture is proposed or completed. You also can help by sending claims for oral surgery, where surgical cutting occurs, to your Shell medical program carrier for payment. Plans such as the Shell Hospital Surgical Medical Program have primary responsibility for these type claims.

If you have any questions on the claim process, call CG at the toll-free number found on top of the claim form.

ILLUSTRATION OF YOUR DENTAL ASSISTANCE PLAN



Treatment Plant nominated by IEPA for state award

The Complex Waste Water Treatment Plant is one of only three Illinois facilities in its industrial category to be nominated for a 1983 "best operated" award. The winner will be selected following inspections by the Illinois Environmental Protection Agency (IEPA); presentation of the award will occur at the Illinois Association of Pollution Control Operators' annual conference in April.

According to IEPA, one purpose of the award is to emphasize the relationship between adequate treatment of waste water and the clean receiving water into which it flows. Complex waste water is treated and discharged into the Mississippi River. Another purpose is to give public recognition and encouragement to industries and their operating personnel who have operated their waste water facilities in an especially effective manner.

Bill Carr, manager of Utilities, attributes the award nomination to the significant efforts of Technical and Operations groups in controlling waste materials discharged from operating units into the sewer system (source control), to the capital improvements made at the Plant five to six years ago, and to the sustained, dedicated work by Utilities operators.

Source control is a monitoring and spill detection function. Waste water samples are tested at individual operating unit sewers, the main headers where several sewer lines converge, and the 36-inch diameter combined inlet to the Plant. Early spill detection, says **Gina Pruitt**, process engineer - Quality Assurance/Environmental Conservation (QA/EC), often gives Operations time to identify and control problems.

Each day approximately six million gallons of water used by the Complex

in refining processes collects in underground sewers and flows to the Plant. Prior to, during and after treatment, the water is tested to ensure it meets quality standards required by the EPA under the National Pollutant Discharge Elimination System (NPDES) permit. NPDES permit parameters include limits on temperature, bio-chemical oxygen demand (BOD), pH, phenol content, ammonia, sulfides, oil and grease, and chromium.

Chuck Walls, QA/EC manager, said in an average month Complex waste water must pass about 160 tests which create an equal number of opportunities to exceed the permit. He added that the Complex is meeting its 1983 goal of 99 percent compliance with the NPDES permit.

THE TREATMENT PROCESS

The Waste Water Treatment Plant is made up of six separate units: Dis-



Leroy Edwards, Utilities operator, takes a waste water sample from Dissolved Air Flotation Unit No. 2 at the Waste Water Treatment Plant. Samples are tested to determine the levels of phenol, ammonia and sulfide, and the pH.

solved Air Flotation No. 1 (DAF-1), Pond-1, Trickle Filter, Pond-2 and DAF-2 are located at west property, and the Lagoons are located near the docks. Organic contaminants, those capable of being decomposed by bacterial action, are removed from the water by contact with organic absorbing bacteria. Inorganic substances such as dirt are also separated from the water.

At DAF-1, air is mixed with the waste water under high pressure. When the pressure is released air bubbles carry (float) the suspended solids to the surface for removal by skimmer arms. The solids are then pumped to a waste disposal facility at east property.

Water from DAF-1 flows by gravity to Pond-1 which is an equalization basin. There, changes in the makeup of incoming water are allowed to stabilize over a 15-hour period. An aerator blends old and new water to achieve a consistent chemical composition in preparation for the next step, the Trickle Filter.

The Trickle Filter is a sprinkler system that sprays waste water over a large bed of rocks. Attached to the rocks are bacteria that metabolize (absorb) organic contaminants. From the Trickle Filter the water flows to Pond-2 where aerators keep bacteria suspended and more organics are removed.

Waste water is then pumped to DAF-2 and solid wastes are separated and removed by skimming, similar to DAF-1. However, solids are pumped back to Pond-2 rather than to the disposal site because they now contain bacteria from the Trickle Filter. The bacteria is recovered at Pond-2 and the clarified water flows to the Lagoons. Any solids remaining in the water at this point settle out at the Lagoons. What flows into the Mississippi is clean water.

As a Utilities operator, **Leroy Edwards** tests waste water samples at the Plant to determine the levels of phenol, ammonia and sulfide, and pH. He also collects water samples for testing by the Quality Assurance Lab.

During routine operation, Lab employees conduct approximately 200 water analyses each week, according to **Janice Rollins**, analytical chemist. They test source control samples from key sewer headers and from the treatment units at west property. Plus, composite samples from the Lagoon outfall are tested to demonstrate compliance with the NPDES permit. QA/EC maintains records of these analyses and submits monthly Discharge Monitoring Reports to the IEPA. In addition, IEPA representatives regularly perform their own water purification tests.

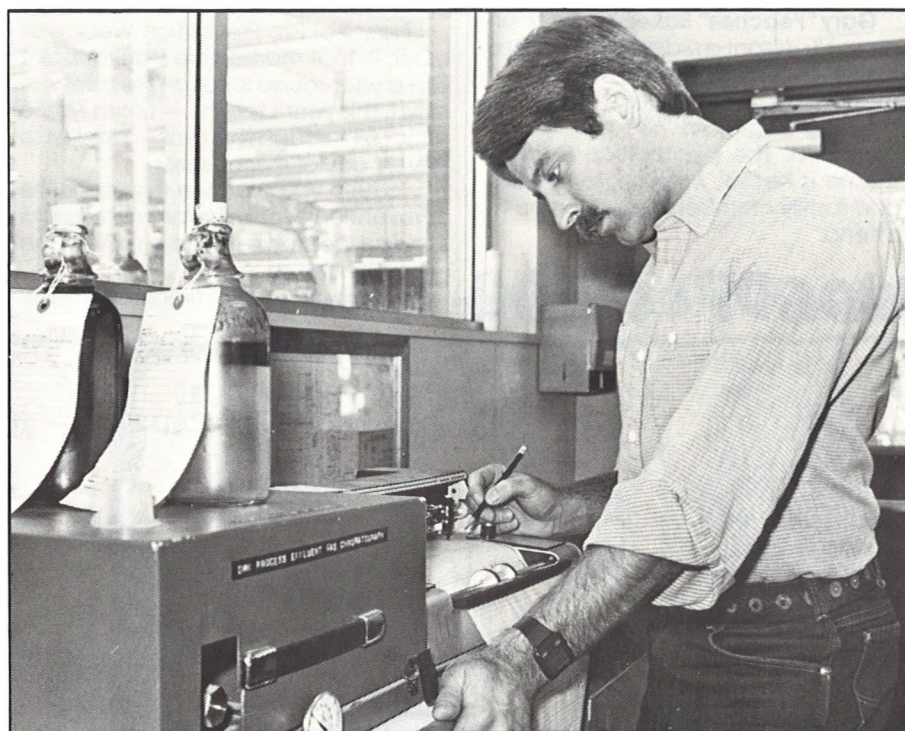
tion tests.

"Being nominated for the 'best operated' award is a real tribute to the hard work and effort on the part of Complex employees," said Carr. "Every-

one whose work is related to waste water source control, treatment or testing should be proud of the recognition Shell is receiving at the state level."



The Quality Assurance/Environmental Conservation Lab tests about 200 process waste water samples each week. Results of these analyses are sent to the Illinois Environmental Protection Agency. Above, Wayne Michalik, special tester, performs a bio-chemical oxygen demand analysis to find the level of organic contaminants in Complex waste water.



Brian Landreth, DMK operator, analyzes waste water using a process effluent gas chromatograph instrument. Tests are made on a regular basis of process waste water. Following treatment at west property, the water is discharged into the Mississippi River.

SHELL SHORTS

Softball winners

The Shockers defeated the Bombers in a best of three games tourney to capture the SRA softball league championship. Each team won their division and then played for the overall title.

Bass tournament

Results from the third SRA bass tournament at Lake Kincaid are in. **O. C. Johnson** took first place; **B. J. Koch**, second; and **Mitch Scroggins**, third.

More winners . . .

Recent winners in a Shell Gem and Mineral Club contest are **Worden Anderson**, first place; **Frank Heintz**, second; and **Jack Turner**, third.

Christmas party

Mark your calendar for the Children's Christmas Party on Dec. 8. The program gets underway at 6:30 p.m. in the East Alton-Wood River Community High School gymnasium. Details will be published in the November Review and in upcoming bulletin board announcements.

Camera Club

Gary "Peaches" Baker, crane operator, will present a slide show of underwater photography at the Nov. 1 meeting of the Camera Club. The meeting begins at 7:30 p.m. in the Cafeteria. The photo/slide contest theme is humor. Employees, retirees and family members are welcome to attend.

Classified Ads

For sale: three-bedroom split foyer house with eat-in kitchen, dining room, double-car garage and more. Airwood subdivision, Rosewood Heights. \$64,900. **Randy Brueggeman**, 259-5421.

For sale or rent: three-bedroom brick and frame house with attached garage, on large corner lot in Timberwood Estates, Bethalto. Fully carpeted, built in dishwasher, central air, only two-years old. Sales price is \$44,900. **Tom Colgate**, ext. 2640 or 656-2315.

For sale: prime lot in Glen Carbon subdivision. Backs up to woods. **Dave McKinney**, ext. 2168.

For sale: A rabbit cage with four compartments, \$85. Hoover hand sweeper in excellent condition, \$25. Chrome railing for six-foot truck bed, \$25. Lawn edging, 20-feet long, new. \$5. **Jo Allen**, 466-3931.

Safety posters

Posters entered in the safety calendar contest may be picked up from the editor's office in the basement of the Main Office building. The posters will be kept for a few weeks only and then thrown away so call 2168 and make arrangements for their return.

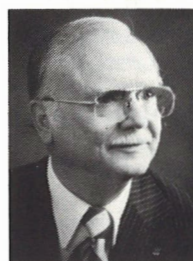
Learn not to burn

National Fire Prevention Week was Oct. 9-16. It marked the starting point for a year-round focus on fire safety. In fact, this year's theme — Learn Not to Burn All Through the Year — applies to every day of every season.

To help you practice this year's Fire Prevention Week theme, here are a few suggestions to keep in mind in the months ahead.

If your home has a fireplace, make

Retirements



Hank Hendricks, Jr.
QA/EC
41 years



Everett Nussman
Maintenance
32 years

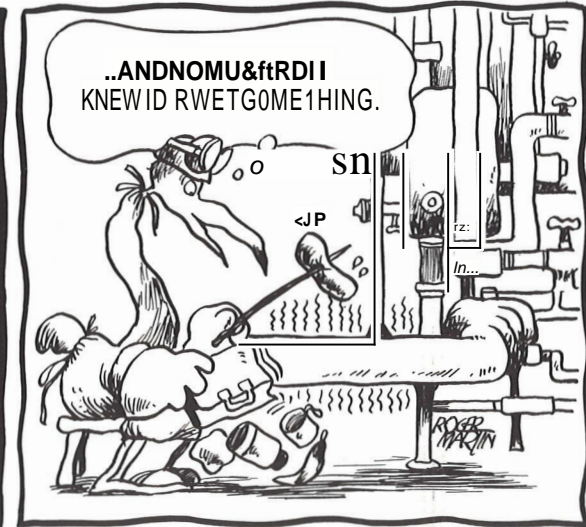
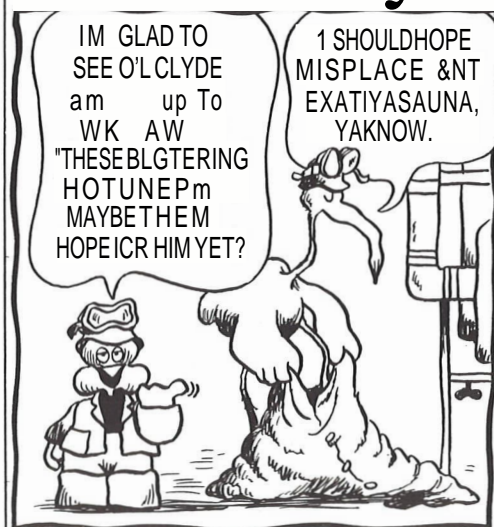


Howard Bethel
Cracking
28 years

sure the chimney is professionally inspected and cleaned before the heating season. Creosote, formed when wood burns in a fireplace or stove, can build up and cause a chimney fire. It's also a good idea to have your furnace serviced by a professional to make sure it's in good working order.

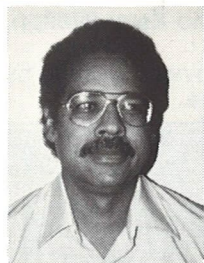
The winter season means home heating, as well as the holidays, which can lead to some special fire problems. You should never start a fire in the fireplace or in a woodstove by using gasoline or other flammable liquids. Always keep a screen in front of the fireplace to prevent sparks from leaping out. Never leave a fire unattended; if you have to leave, make sure the fire is out.

utoeov&ayDe

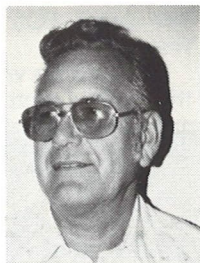


New to WRMC

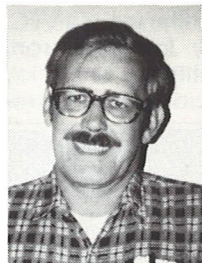
Beginning with this issue, photographs of new and transferred employees to Wood River will be featured in the *Review*.



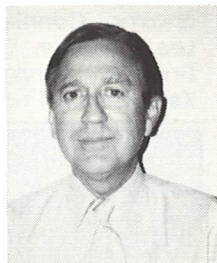
Ed Blanc
EP&S



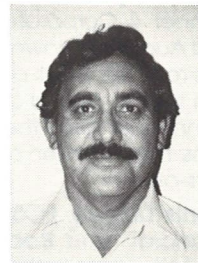
Jack Crocker
EOS



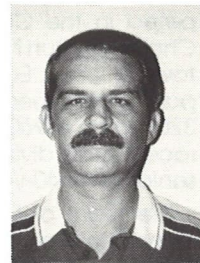
Keith Durham
Distilling



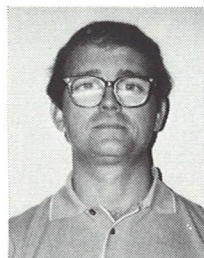
Jack Fisher
YIP



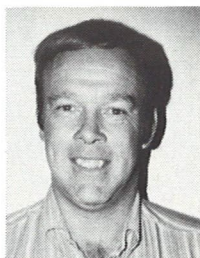
Leonard Franklin
EOS



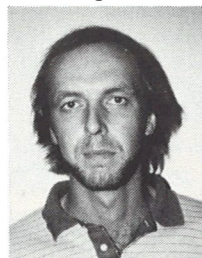
Larry Fultz
LOP/Gas



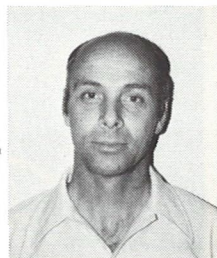
Bob Lynch
Distilling



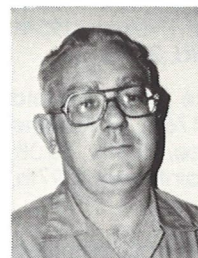
Danny McNeill
Cracking



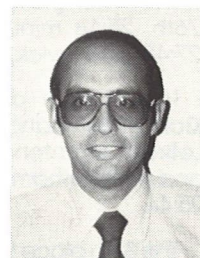
Heinz Nalley
Maintenance



Deano Reeser
Aromatics West

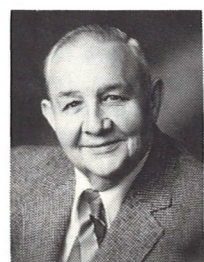


Gerry Spencer
LOP/Dispatching



Jim Steller
YIP

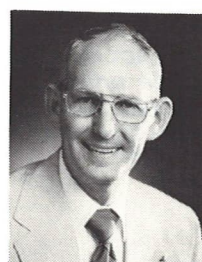
Anniversaries



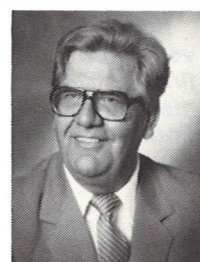
Robert Kapp
Lubricants
35 years



Fred Kranz, Jr.
Distilling
35 years



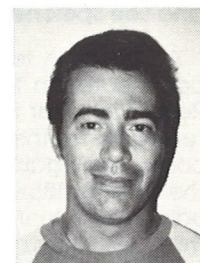
Harry Young
Maintenance
35 years



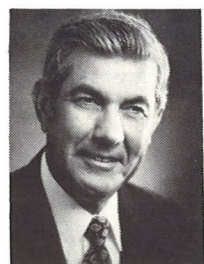
Don Thurm
Cracking
25 years



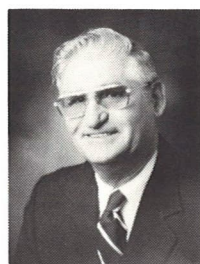
Susan Stranz
Financial



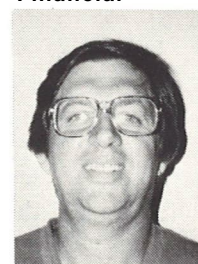
Jim Vonderheidt
Maintenance



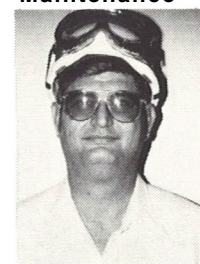
Tommy Margaritis
Maintenance
35 years



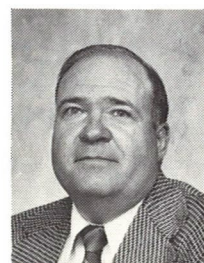
Charles Modrovsky
Maintenance
35 years



Floyd Warren
Maintenance

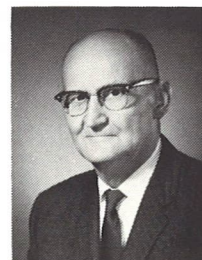


Jack Wilson
Maintenance

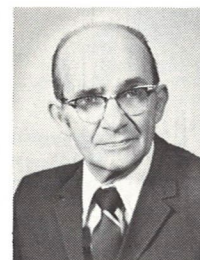


Harold Kendall
Maintenance
35 years

In remembrance



P. J. Sido



O. H. Holdenried

Paul J. Sido, 81, died Sept. 21. Mr. Sido was a compounder 2nd, Compounding before retiring in 1966 after 22 years of service.

Oliver H. Holdenried, 73, died Aug. 30. Mr. Holdenried was an Insulator, Engineering Field before retiring in 1975 after 32 years of service.

John Kolesar, 67, died Sept. 15. Mr. Kolesar was a pipefitter, Maintenance before retiring in 1979 after 25 years of service. (No photo available)

Employees active in local races

Nine Complex employees competed in the Channel 4 Corporate Challenge Run held Aug. 28 in downtown St. Louis. Each ran four miles as part of three-person teams. A total of 320 teams, or 960 runners, entered the race in three divisions: men, women or senior (over 40-years-old).

The team of **Dennis Dressel**, EOS; **Kerry Prielipp**, Financial; and **Bob Zwick**, EOS, came in 14th place in the men's division. Individual finishes and times among all runners were Dressel, 76th, 25:18 minutes; Prielipp, 195th, 27:48; and Zwick, 53rd, 24:43.

Taking 45th place were **Donald Klotz**, Maintenance, 176th, 27:26; **Rene LeBrun**, Maintenance, 318th, 30:08; and **Jim Wortham**, Maintenance, 97th, 25:44.

The 85th place team was comprised of **Ken Hudson**, Financial 629th, 35:30; **Wayne Gusewelle**, EP&S, 168th, 27:20; and **Lee Speicher**, EOS, 232nd, 28:29.

A 10-person team from Shell also participated in the Xerox Marathon Relay Oct. 9 at Forest Park, St. Louis. Teams from other area corporations competed against one another over the 26-mile 385-yard course. Individuals ran one-tenth the distance, or 2.6 miles 38.5 yards. Each team had at least two women.

Shell runners were **Jim Weber**, Purchasing; **Connie Patterson**, QA/EC; **Lee Speicher**, EOS; **Jane Johnson**, Financial; **Randy Millikin**, Financial; **Ken Hudson**, Financial; **Wayne Guse-**

welle, EP&S, **John Heinemann**, EP&S; **Bob Zwick**, EOS; and **Kerry Prielipp**, Financial.

Race results were not available by the *Review* deadline.



It is a dirty job but . . . Shell employees gave it their best during a mud volleyball tournament sponsored by the Alton Expo last month. The team finished 24th out of 64 entrants in the third annual competition. Team members were Bill Jacobs, Steve Erslon, Dennis Bolton, Lee Speicher, Shirley Roderfeld, Sue Largen, Cheryl Robinson, Bob Wells and Stacy Riechmann. (Photo by Randy Millikin)

Shell Oil Company
P. O. Box 262
Wood River, Illinois 62095

Bulk Rate
U.S. Postage
PAID
Wood River, IL
Permit No. 229



Published monthly for
employees and pension-
ers of Shell Oil Company
In Wood River, Illinois

David B. McKinney, editor
(618) 254-7371,
ext. 2168