

Platformer Slated to Be Constructed

A second Platformer, slightly larger than the one now in operation, is scheduled for construction here this Spring. Site clearance for the new unit, to be known as Platformer Two, is nearing completion. Platformer Two will be built south of the present unit.

The contract has been let to A. G. McKee of Cleveland, Ohio. The McKee firm also built Alkylation Unit Three here in 1953-54.

INCREASES MOTOR FUEL

The new unit will increase the Refinery's ability to meet future market demands for motor fuels with higher octane numbers. It will have a nominal capacity of 20,000 barrels per day. A platformer gets its name from the two words, platinum and reforming. Platinum as a catalyst assists in the reforming of gasoline feed stocks into high grade motor fuels, boosting quality as much as 25 octane numbers.

A Desulphurization unit will be installed to prepare feed stocks for Platforming.

A NEW FLARE

Site clearance for the new Platformer consisted of moving feed lines to tank farms and standard clearance operations. A new flare has been built for Platformer One, and the site will be ready for construction in the near future.

Eight Men Re-elected to S.R.A. Board

Eight board members were re-elected to the 15-man governing board of the Shell Recreation Association in balloting this month. Officers will be elected by the board on January 31 at their regular monthly meeting.

All members will serve a two-year term through December of 1958.

Re-Elected to the board were I. E. Flagg, Frank Carrol, and W. Rives from the Crafts. Operations' men elected to another term of office include M. W. Tucker, J. H. Cherry, and A. E. Doerr. Staff men R. W. Henry and J. W. Thompson were also re-elected.

New members are, Operations: V. J. McCoy, Gas Department, and L. E. Purdy, Alkylation. Crafts: J. A. Hmurovich, Paint, and E. L. Burmeister, Automotive. Staff: C. E. Herzog, P & IR; John Martin, Engineering, and R. H. Schindewolf, Research Laboratory.

Refinery Effluent Control Program Stressed Further

Effluent Control Manager G. E. Sample this month furthered the word of caution to Refinery employees in regard to the disposal of phenols, sulfides, and oils at the plant. Sample commented that the low level of the Mississippi River necessitated the cooperation of every employee in dealing with this problem.

For more information about the waste disposal program at Wood River Refinery, turn to page 3 in this issue.



Volume 18 - Number 1

WOOD RIVER, ILLINOIS

January, 1956

Distinguished Visitors



REFINERY VISITORS F. S. Clulow, Vice President - Manufacturing, center, and R. W. McOmie, new General Manager - Refineries, left, review blueprints with Refinery Manager H. D. Dale in his office. Clulow and McOmie visited the plant January 20.

Program Launched in 200 Newspapers

Shell Sponsors Nation-Wide Safe Driving Campaign

Participation-type newspaper ads are being used by Shell to vitalize the subject of traffic safety. Surveys following test runs in selected cities show readership and self-testing have been extraordinarily high.

Each ad develops one theme, presenting visual situations and asking the reader to identify their purpose. Still another checks eyesight by having the viewer read phrases at arm's length and then read larger type from across a room.

The series was first run in Charlotte, North Carolina, and Tacoma, Washington, cities of similar size on opposite coasts of the nation. Explanatory letters were sent in advance to civic and government leaders, school teachers, ministers, Shell dealers, and others concerned with highway safety, inviting their comments.

RESPONSE HIGHLY FAVORABLE

The response from community leaders has been highly favorable. Teachers have used the tests in classrooms. Ministers have asked for and received reprints for use in activity groups. Newspaper editorials and radio and television comments have called attention to the ads, and law enforcement officials have been so impressed they have

NEWSPAPERS IN AREA
In this area, the safety advertising will appear for three weeks, beginning Monday, January 30, in four area newspapers. They are the ST. LOUIS GLOBE-DEMOCRAT, the ST. LOUIS POST-DISPATCH, the ALTON EVENING TELEGRAPH, and the EDWARDSVILLE INTELLIGENCER. (See AD, Pages 4-5).

Bloodmobile

On April 11, 1956, the Red Cross Bloodmobile will be stationed at the Community Center, Roxana, Illinois for the purpose of permitting employees to volunteer as blood donors. This is a very worthwhile program as the need for blood by local hospitals in the community continues to be in excess of supply.

Further details of the program will be outlined in subsequent issues of the Shell Review.

sponsored the use of the quizzes. Trucking companies and high school driver training classes have used them.

The tests are scientifically developed and bear the approval of the New York University Safety Center and the Automobile Safety Foundation in Washington.

DALE EXPLAINS PURPOSE

At a recent meeting with mayors, public officials, and school administrators from several towns in the Wood River Refinery area, the new safety program was highly received, drawing many favorable comments from those present.

The refinery sponsored two luncheons this month, at which Refinery Manager H. D. Dale explained the purpose of Shell's advertising program and asked those present to help the Company stress the importance of safe driving.

"We hope everyone will read these ads and take the tests," Dale said. He added, "We know that if they do take the tests, they will be more aware of their own driving capabilities."

SRA Cards For 1956 Now on Sale

Shell Recreation Association membership cards for 1956 are now available with 39 SRA men handling the cards throughout the plant. In addition to the board members the SRA has supplied 24 others with the cards.

The organization has announced that all bowlers and other employees participating in SRA-sponsored activities must purchase cards for 1956. The club's chief goal, is obtaining 100 per cent participation. That is, selling a 1956 card to every employee of Wood River Refinery.

Cards may be obtained from the following, in addition to SRA board members:

Treasury — Sparks
Personnel — Kleinert
Main Gate — Harris
Plant Prot. — Wiess
Control Lab. — Benefiel
Dispatching — Grove
Compounding — Gillespie
Tool Room — Felton
Experimental — Hacke
Eng. Inspection — Oden
Aromatics — Crull
Light Oil — Schelm
Cooling Water — Hooper
Gas Dept. — Neipert
Stores — Neeley
Loading Racks — Groppe
Shops One — Baker
Cat Cracking — Doty
Fab Shop — Rapp
Research — Welch
Research — Bowman
Distilling — Campbell
Control Lab. — D. Ufert
Lube Office — Ballinger

Red Cross Drive Here During March

J. B. (Jim) Kahmann, SHELL REVIEW editor, has been appointed chairman of the 1956 Refinery Red Cross Drive. It was announced this month. The Red Cross campaign, which is held annually at the plant, will take place in March.



The drive will be held simultaneously with the Alton-Wood River area campaign. A steering committee will be named soon, and donations will be handled on a departmental basis. The major goal of the drive each year is to receive a contribution from every employee — that is, 100 per cent participation.

Long recognized as one of the outstanding humanitarian agencies in the world, the Red Cross is celebrating its 75th anniversary this year. Red Cross Bloodmobiles, one of the organization's largest projects, now travel the nation, collecting blood to stock America's vastly needed blood banks. The Red Cross also is responsible for disaster relief, first aid and water safety classes, home nursing and baby care programs, and Armed Forces welfare work.

Personnel Moves



L. E. STUBBLEFIELD



R. B. JORGENSEN

Jorgensen to New York; Stubblefield is Promoted

R. B. Jorgensen, Supervisor of Stock Accounting since April, 1955, has been promoted to Head Office, effective February 1. L. E. Stubblefield, formerly of General Accounting, has been promoted to succeed Jorgensen as Stock Accounting head.

Jorgensen's new assignment is to the Refinery Accounting section in New York.

R. B. JORGENSEN

Jorgensen joined Shell in July, 1952, as an accountant in Stock Accounting. He was later transferred to Catalytic Cracking and then to Stores as an accountant-clerk. He spent approximately eight months at Stores before being transferred to General Accounting.

He remained in General Accounting until his promotion to Stock Accounting supervisor.

A graduate of the University of Minnesota, Jorgensen is a native of Oldham, South Dakota. He received a B.A. in Accounting from Minnesota in 1952. Jorgensen served three years in the Marine Corps during World War II.

He is married and has three children, Michael, 13, James, 7, and Kristin, 3.

L. E. STUBBLEFIELD

Stubblefield has been with Shell 19 years, and has held clerical assignments in the yield section relative to practically every operating department at the refinery.

His first assignment at Wood River was to the Dispatching Department as a clerk at the loading racks. He subsequently held clerical jobs in several operating departments.

Stubblefield served five years with the Army before and during World War II. He spent 20 months overseas with the Allied Military Government in Europe. When he returned to Shell late in 1945, he was assigned to the yield section - Light Oil Treating. He later handled yield work

H. H. Zuidema is Elected Bridge Club President for 1956

H. H. Zuidema was elected president of the Shell Bridge Club for 1956, succeeding R. W. Trares, and J. D. Metcalfe was re-elected secretary in elections held this month.

The club is sponsoring their annual Team-of-Four tournament, and is holding regular bridge sessions every Monday night at the refinery cafeteria. The new officers have issued an invitation for new members to join the club and become eligible for Master Point ratings.

Each week the winning team receives 1 Master Point, with the second and third place teams receiving half a point, and the fourth place team netting .15 of a point.

for Cracking prior to his transfer to Stock Accounting in 1950.

In 1952, Stubblefield was transferred to General Accounting, and remained there until the recent promotion.

A resident of Edwardsville since he was five years of age, Stubblefield now resides at Rural Route 1, Edwardsville. He is married to the former Hazel Nelson of Dow, Illinois. The Stubblefield's have three children, John, 6, Susan, 3, and Donna, 8 months.

Ray Thrasher President Of Camera Club

Ray Thrasher, Engineering Design, was elected president of the Shell Camera Club at the organization's January meeting. Dick Shulke was elected vice president, and Bob McFarlane secretary-treasurer.

Committee chairman elected were as follows:

Welfare Committee: Jerry Branham, Lewis Morgan. Technical Committee: Carl Nevlin, Jim Fallon. Program Committee: Jack Turner, Ken Smith. Correspondence: Irv Flagg, Orville Abernathy. Publicity: Bill Tyron. Equipment Committee: Bob Bencher. Building Committee: Chuck Andrews.

The club voted to join the Photographic Society of America, thereby making the organization eligible to take part in various photographic contests as well as sharing in the many benefits of the P.S.A.

On behalf of the club, Ray Thrasher issued an invitation to all Shell employees who are interested in photography to join the club. Membership is free to all persons who are members of the Shell Recreation Association. Meetings are held once a month in the Training Building.

Lewis Morgan, who won first place in the "Picture of the Year" contest in 1955, will highlight the program for the February 7 meeting. Morgan's subject will be "Birds and their Habits."

DID YOU KNOW?



That in terms of total assets, the petroleum industry is the largest of all manufacturing industries, and is second only to the food and beverage industry in terms of total sales.

That more than 80,000,000 acres of federal lands are now under lease to private enterprise for oil or gas exploration and production in the United States, Alaska, and under the sea on the continental shelf.

That the East Texas oil field produced more than 75,000,000 barrels last year, three times as much as any other field in the United States.

That in the 96-year history of the oil industry in the United States, only 150 wells have ever been drilled below 15,000 feet. Over one-third of these wells were drilled last year.

That on an offshore oil drilling rig seeking petroleum 15,000 feet beneath the ocean bottom, lubrication of equipment alone costs \$2,000 every 24 hours.

SYMPATHY

Lloyd Hawk wishes to express his thanks to fellow employees and the management for their words of sympathy on the death of his father, Joseph Hawk.

INTRODUCING . . .

Miss Beverly McNear



MISS BEVERLY MCNEAR, Junior Clerk in the Stores Department, has been a Shell girl for 8 months. Bev's hobbies include ice skating, roller skating, and dancing. She also likes bowling. Born in Alton, Beverly lives with her parents, Mr. and Mrs. Earl McNear, at 3515 Oscar Street in Alton. Her secret ambition is to vacation in Hawaii.

First Prize is \$100 Savings Bond

Chemical Engineer Group Sponsors Essay Contest

The Alton - Wood River section of the American Institute of Chemical Engineers is sponsoring an essay contest to stimulate the interest of high school students in science, particularly in chemistry and chemical engineering. The title of the essay is to be "What the Chemical Profession Offers Me as a Career."

A \$100 Savings Bond will be awarded to both the student responsible for the winning essay and the teacher advising him.

Seven Schools Eligible

The students from the senior classes of Alton, Bethalto, East Alton - Wood River, Edwardsville, Marquette, Roxana, and Western Military Academy schools will be eligible to compete in the contest. Schools have been asked to designate liaison teachers to advise the students, and members of the sponsoring group will be available as consultants.

Six Additional Prizes

In addition to the \$100 first prize, the organization is awarding six \$25 Savings Bonds for winners from each of the remaining six schools. All of the prizes were made possible through contributions from Alton Box Board Company, Dowell, Inc., Laclede Steel, Olin-Mathieson Chemical Corporation; Owens-Illinois, Shell Oil Company, Socony-Mobil Oil Company, Standard Oil Company, and Sinclair Oil Company.

The Alton - Wood River section of the American Institute of Chemical Engineers is made up of representatives throughout the area. D. W. Miller, Assistant Manager of Wood River Refinery's Alkylation Department, is president of the organization, which was officially accepted by the A.I. Ch.E. in November, 1955.

TCP Additive Has Special Formulation For Winter Driving

TCP*, the Shell-developed additive to control pre-ignition and spark plug miss, has a special winter formulation. This modification achieves two results, preventing rust in fuel systems and the formation of ice in the carburetor.

Shell's motor fuels have always been blended to achieve maximum performance under prevailing weather conditions. Shell Premium with Winter Formula TCP is the latest step to insure fast starting, quick warm-up, and steady engine firing under low temperature and high humidity conditions of driving.

Shell's anti-icing additive has been developed by research scientists of Shell's Manufacturing Organization. In both laboratory and driving tests it has shown great superiority over previously known and used ice preventors.

The cooling and condensing of water vapor under certain atmospheric conditions can lead to stalling of the engine due to ice formation in the carburetor throat. Rusting of fuel systems has also been a troublesome problem. With Winter Formula TCP, both these troubles are avoided.

* Trade-Mark Shell Oil Co.



Published monthly for the employees of the Shell Oil Company, Wood River Refinery.

JIM KAHMANN Editor

REPORTERS

Operating Departments F. E. Zapf
Engineering Field L. W. Linebarger
Research Laboratory J. A. Bowman
Main Office Marilyn Simberger
Safety E. B. Wiley

Address communications to Editor, Shell Review,
Box 262, Wood River, Illinois, Phone 563

Advanced Catalytic Cracker at Anacortes Is Now on Stream

Shell's newest and most advanced fluid catalytic cracking plant began full-scale operation January 1 at the recently completed Anacortes Refinery.

This cracking plant, designed for 23,000 barrels per day intake, employs a new technique to achieve a substantially greater high-octane gasoline yield than is obtained from more conventional cracking units. Initial operation has exceeded design expectations.

The new technique is the outgrowth of intensive process development work by Shell research and engineering personnel during the last several years. This spring Shell plans to release specific performance data and information on the plant's novel features and will make its design available to other refineries through licensing arrangements.



"No clock watchers around here since we hired Miss Quivers!"

Shell Is Now Using Special Tank Trucks For Refueling Planes

The first tank trucks especially developed for the refueling of turboprop airplanes are being used by Shell Oil Company in servicing Capital Airlines' new Viscounts. These custom-built trucks carry 4600 gallons of fuel and 420 gallons of power boost fluid called water-methanol.

Designed by the motor fleet of the Shell Oil Company in cooperation with Capital's operations experts, the new trucks pump more than 200 gallons per minute of fuel from a single hose. A micron filter and water separator are employed to keep the fuel clean and "dry." Underwing fueling is used. The power boost liquid is in a stainless steel compartment at the rear of the truck.

The trucks are built on a two axle chassis for full maneuverability and more efficient operation. The units weigh 53,000 pounds loaded; Shell's initial fleet consists of 19 trucks and more are being built as the need develops.

River at Extremely Low Level

Employees are Cautioned About Disposal of Phenol, Sulfides, Oil

A recent report issued by the Bi State Development Agency on the results of a water pollution investigation of the Mississippi River in this area shows that a substantial part of the pollution is due to industrial wastes. Shell has been aware of this and for a number of years has been studying various means of reducing pollution from their Wood River Refinery.

This study has been culminated in the recent announcement of the decision to construct a \$1,000,000 plant for the treatment of the effluent from the refinery. The new installation is an addition to other facilities built in previous years and is an example of constant efforts to purify effluent before disposal into the Mississippi River.

Will Reduce Pollution

These new facilities have been designed solely for the purpose of reducing pollution, and it is not intended to permit additional pollution within the refinery. Since the new plant will not be completed and in operation for almost a year, and because of the extremely low stage of the Mississippi River, it is particularly important at this time that effluent pollution be reduced to an absolute minimum. Not only is pollution detrimental to fish life in the river, but it complicates treatment of river water used for domestic purposes.

Refinery employees have always been cautioned about the disposal of phenol, sulfides, oil, and other chemicals to refinery sewers. And this month, G. E. Sample, Effluent Control Manager, furthered this word of caution with an announcement that employees must constantly use good judgement and cooperation in dealing with the situation.

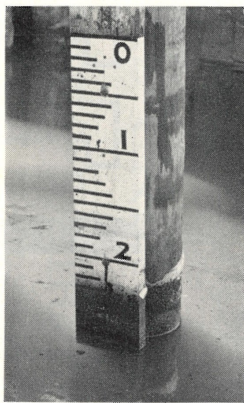
Care With Phenol

"In no instance should phenols, mercaptans, sulfide or other chemical solutions be disposed to refinery sewers. When any questions arise concerning disposal of wastes, Effluent Control people should always be consulted," Sample said. He



THE MISSISSIPPI RIVER is at one of the lowest levels in years, as seen through the pilings near the refinery's disposal sewer. Sandbars which are frequently under water are visible in the background. The water gauge on the piling at left is at 10 or 11 on an average level, is now at -3.

added that if by accident phenol does enter a sewer, the Effluent Control Department should be contacted



THE WATER GAUGE can be seen more clearly here at an extremely low level of -3. The level of the river makes careful disposal of phenols, sulfides, and oils at the refinery more important than ever.

immediately. Sample also said that even with the most modern waste disposal and purifying equipment, the job of proper control is the responsibility of virtually every refinery employee. Objectionable material entering sewers in the smallest of quantities at a number of locations in the plant can quickly result in sizable concentrations.

The Effluent Control Department is asking supervisors to keep a close check on this matter, and all employees should guard against the situation by closing off all leaks in lines carrying phenol or other strong chemicals.

New Training Program

In the near future, a Supervisory Training program concerning Effluent Control will be conducted in an effort to educate further all supervisors with the importance of proper waste disposal procedures.

Research Bowlers Lose Toughie To Alton Owls' Club

The Owl's Club of Alton slapped a 397 pin defeat on Wood River's Research Laboratory in a bowling match made up of four teams from each organization. Putting together eight "500" series and one "600" trio, the Owls knocked down 9973 pins to the Lab's 9576. The match was held January 15 at Alton's Acme Alleys.

Jim Price and Ray Schindewolf were individual stars for the Lab outfit, Jim having his best series of the year with three consecutive "200" games for a 679 scratch total. Included in Price's series were games of 210, 224, and 245. Shindy hit for a 612 total on games of 186, 202, and 224.

Five of the Lab's bowlers had 500 series, including Townzen, 507; Poitz, 510; Judd, 521; Gillis, 524, and McCulloch, 532.

New Price Policy Is Reinstated By Shell Similar To 1954 Policy

A price policy holding sales of automotive gasoline to commercial consumers in tank car and transport truck quantities at the jobber price level will be reinstated in slightly modified form January 1, 1956, by Shell Oil Company. Exceptions to the policy are sales in the Pacific Coast territory, to the Federal Government, and to automotive and engine manufacturers.

The Company had established a policy on July 10, 1950, of making no commercial sales, except in the Pacific Coast territory, at prices below jobber price levels. This policy was followed until the latter part of 1954 when increasingly heavy competitive pressure forced the Company to meet the lower prices of competitors in certain areas. Even then commercial accounts were not supplied at less-than-jobber prices in Shell jobber territories.



"You have such a nice handwriting, Mr. Balk. Why don't you just write your letters in longhand?"

Shell Turbo Oil Chosen to Lubricate World's Largest Turbine Generator

Shell Turbo Oil 27 has been chosen to lubricate the world's largest turbine generator, rated at 270,000 kilowatts, which will be installed by February 1 at the Detroit Edison Company's new River Rouge Plant. The plant will be expanded in stages to a total capacity of more than 1,000,000 kilowatts.

Sixteen thousand gallons of Shell Turbo Oil 27 will comprise the first shipment for the generator; a total of about 50,000 gallons of Shell lubricating oils, delivered through the Detroit Marketing Division, is expected to be used by the plant during 1956.

75 YEARS
+
ON THE JOB

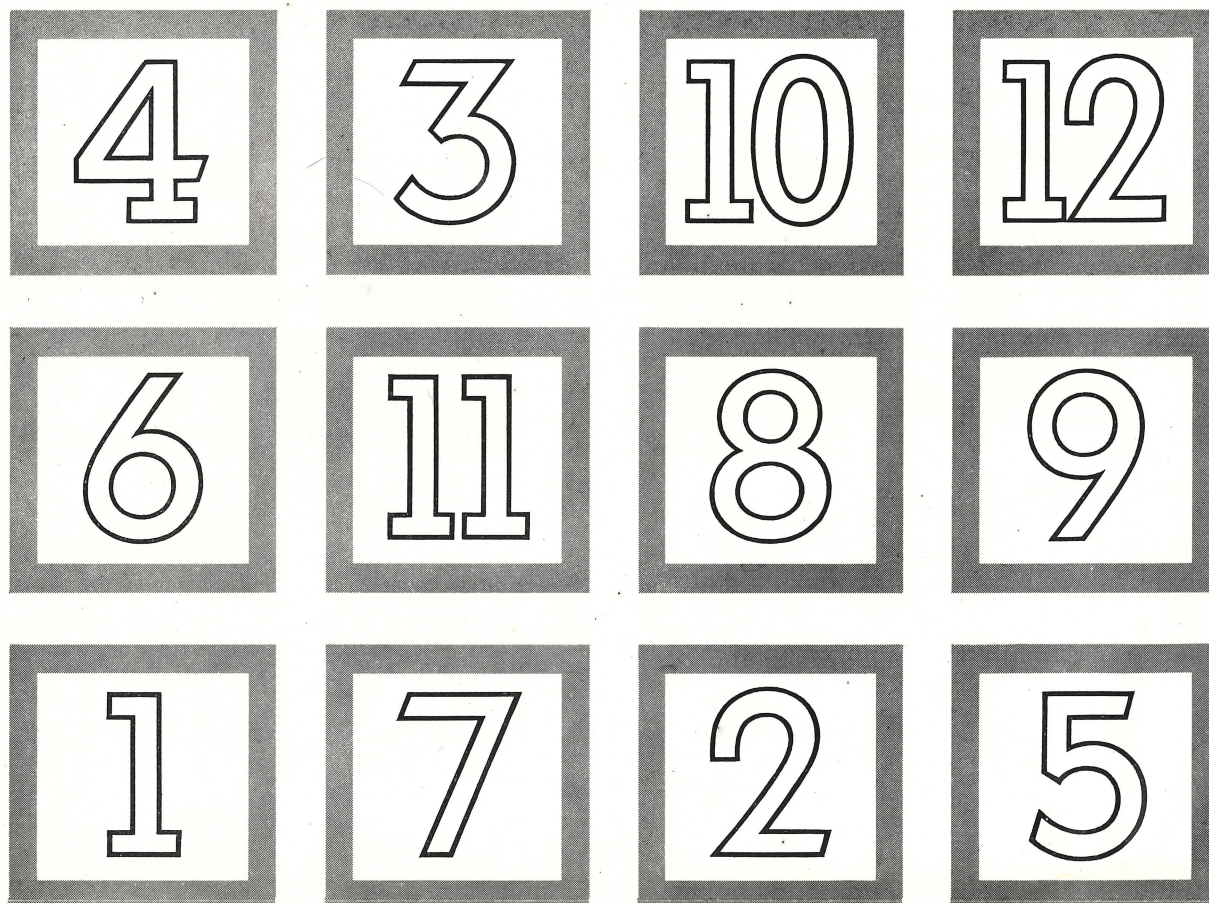
Shell Chemical Building Methyl Ethyl Ketone Installation at Norco, Louisiana

Shell Chemical Corporation will build at its Norco Plant a methyl ethyl ketone plant with a capacity of 40,000,000 pounds a year. Construction will start about the first of the year, with production slated for early 1957.

This expansion meets the increasing demands of the surface coating and vinyl resin indus-

tries, two of the principal users of MEK.

Shell Chemical pioneered the manufacture of MEK from secondary butyl alcohol, and first made commercial quantities of the solvent in California in the early 1930's. This is the fourth Shell MEK plant; others are at Houston, Texas, and Martinez and Dominguez, California.



This advertisement prepared in cooperation with the Automotive Safety Foundation.

How fast can you touch each square in numerical order?

WITHIN 9 SECONDS? Your reflexes are about average.

WITHIN 7 SECONDS? Very good.

WITHIN 5 SECONDS? Excellent.

**MORE THAN NINE SECONDS? YOUR REACTIONS ARE
TOO SLOW. DON'T DRIVE OVER 45 M.P.H.***

The Shell people believe that being a good neighbor calls for more than just making good products. Part of our job is to help keep you safe on the road. It's not enough that today's cars are the finest, safest ever made. We need safe drivers in the safe cars. Everyone behind a wheel

must be on guard constantly. That's the reason for this message. America's highways form a great personal transportation system. When all motorists use these highways safely *all* the time, that's the sign of a better future... for you... for all of us.

*Authority: Dr. Herbert J. Stack, Director, Center for Safety Education, New York University

SHELL OIL COMPANY

Sign of a better future for you



Shell No. 2 Wins Second Round Crown

Shell's Number Two Industrial League bowling team, which ran second to Shell One in registering top scores for most of the season, came through when it counted and won the second quarter championship in league activity last month. The Number Two boys then lost out in the first-half roll-offs again Onized Two, losing two out of three games in a playoff match January 1.

Onized Two had previously won the first quarter crown in November, and now is assured of a roll-off for the league championship in May.

In the roll-off with Onized on January 1, Shell Two lost the first game, 884-839, won the second with a good 988-964 series, and lost the final game by 37 pins, 937-900.

Frank Hackenthal and Walt Flessel paced the Shell attack against Onized. Frank hit 558 on games of 165, 195, and 198, and Flessel had 164, 175, and 206 for a 545 series. The other three members of the team, Archibald, Thompson, and Isted hit 537, 505, and 505 respectively.

Middendorf was high man for Onized Two with 579, followed closely by Steward, who had 577.

Right now, Shell Two is in fifth place in the 10-team league with a record of four wins, five losses. Shell One, still trying to win a quarter and get in the roll-offs, is now third with 6 and 3.

'Hub' and 'Ken'



KEN BOYER, right, is greeted by Shell Club president H. J. (Hubert) Hayes at the January Shell Club meeting at Skaggs. Boyer told guests that he expects the St. Louis Cardinals to finish in third place this year.

Credit Union Directors Vote 3.5% Dividend to Members

Directors and committeemen were elected and a 3½ percent dividend was voted by the members at the 21st annual meeting of the Shell - Wood River Federal Credit Union January 17, at the Central Grade School, Wood River.

Re-elected to the board of directors were G. K. Bruce, G. A. Herndon, G. C. Farmer and H. E. McCarthy.

Jackson Re-Elected

W. M. Jackson was re-elected to the credit committee. M. C. Keilbach and C. S. Blankenship are the hold-over members of this committee.

M. J. Mygatt and M. C. Robinson were re-elected to the supervisory committee. L. H. Rohde is a hold-over member of this committee.

Since organization of the Credit Union in November 1934, a total of 27,490 loans have been made amounting to \$11,211,707.53. At the present time there are 1,363 in force amounting to \$958,382.09. Membership totals nearly 3200 persons owning shares amounting to \$1,447,740.53. Assets of the organization total \$1,601,721.45.

Over \$550,000 Invested

The Credit Union's investments include \$320,064.07 in Government bonds and \$240,000 in federal and state savings and loan shares.

Speaks at Shell Club Meeting

Ken Boyer Says Cards Will be Better in 1956

St. Louis Cardinal baseball fans can look for a better season in 1956 for the Redbirds, according to Ken Boyer, the Birds star third sacker. Boyer, who addressed the January Shell Club Meeting on the 17th, said most of the Redbird players think they can finish in third place this season, which would be a sizable jump from the seventh they finished in '55.

Boyer, a personable young man who really looks like a major leaguer, said the Redbird management feels they have strengthened the club's most glaring weakness - relief pitching. The addition of veteran reliever Ellis Kinder, long considered one of the games most effective fire-extinguishers, should do the trick, Boyer commented. Boyer also said the club feels Walker Cooper, half of the Card's famous brother pitch-and-catch act of the forties, should be able to catch 75 games and hit the long ball.

Smith Feeling Strong

"We feel that our relief pitching hurt us more than anything last year," Boyer said. "But this season with Kinder going for us and Frank Smith in good shape, things should be different."

Ken further commented that the pitching staff should show marked improvement over-all in 1956. "Harvey Haddix should win 20 games this season," Ken smiled, "And with Mizell (Vinegar Bend) back from the service, we'll have good starting pitchers." Boyer named Willard Schmidt and Tom Poholsky as the other two probable starters. He added that several young pitchers would be trying to make the team, and that the rookie picture over-all was good.

High On Blassingame

Don Blassingame is, in Boyer's and other players' opinions, the most promising rookie in the Cardinal fold. Blassingame, who saw action with the team in the last few weeks of the season, is a second-baseman who last year hit left-handed at a .300 clip. Boyer didn't comment on where Don would play, but hinted that the Cards were mighty high on him.

Boyer quickly made the rounds of the Cardinal lineup, putting Repulski in left, Virdon (1955 Rookie of the Year) in center, and Stan Musial in right. On the infield, he stationed Wally Moon at first, Schoendienst at second, and Alex Grammas at short. He smiled when he came to third, saying, "I hope I'm still at the hot corner."

Ken commented that the whole team feels that Musial and Schoendienst will have better years in 1956 than they had last season. Stan hit .320 after a slow start, and Red slumped to .260 from .300 in 1954. "Stan thinks he can still get one hit out of every three trips to the plate," Boyer said, "Starting in the outfield instead of first base, he won't be pressing as much." Schoendienst, who had eye trouble in '56, thinks he has a stigma corrected and is looking to better things this year.

(Continued on page 8, col. 2)

January Service Anniversaries



30 Years
O. F. Blackard
Cracking



30 Years
G. Crandall
Cracking



30 Years
A. G. Davis
Pipe



30 Years
V. T. Dossett
Automotive



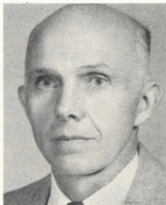
30 Years
V. B. Durell
Pipe



30 Years
Roy Hill
Boilermaker



30 Years
R. H. Hord
P & I R



30 Years
V. J. McCoy
Gas



30 Years
C. E. Newcomb
Lube



30 Years
N. J. Snow
Utilities



30 Years
R. C. Warford
Cracking



25 Years
T. S. Bilyeu
Automotive



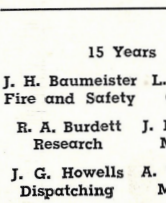
25 Years
C. P. Hamilton
Carpenter



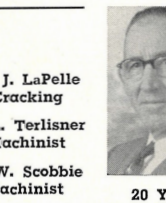
25 Years
F. L. Mansholt
Utilities



25 Years
C. P. Page
Distilling



15 Years
J. H. Baumeister
Fire and Safety



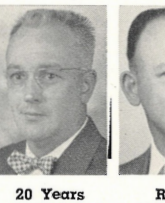
L. J. LaPelle
Cracking



R. A. Burdett
Research



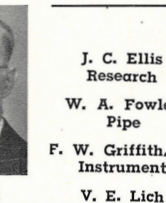
J. L. Terlisner
Machinist



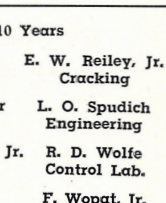
A. W. Scobbie
Machinist



20 Years
R. J. Johnston
Pipe



20 Years
R. J. Lawrence
Pipe



20 Years
W. F. Oerke
Pipe



20 Years
K. F. Schiemeier
Research

Retired
W. M. Arth
Labor

Retired
R. G. Tennikait
Pipe

10 Years
J. C. Ellis
Research

E. W. Reiley, Jr.
Cracking

W. A. Fowler
Pipe

L. O. Spudich
Engineering

F. W. Griffith, Jr.
Instrument

R. D. Wolfe
Control Lab.

V. E. Lich
Carpenter

F. Wopat, Jr.
Research

Company Enjoyed Successful Year In 1955

Shell Oil Company, long noted for maintaining an enviable position in America's highly competitive oil industry, enjoyed progress of broad proportions during 1955. The year just past featured not only desirable liberalizations in various employee benefit programs, but included expanded operations in drilling, refining, and related areas.

In addition to the introduction of policy changes beneficial to all employees, Shell also provided increased crude refining capacity with the completion of another refinery at Anacortes, Washington. And although Wood River's three-year expansion program was virtually completed during 1954, the past year saw the incorporation of numerous projects which made Wood River Refinery's contribution an important constituent of Shell's success.

Employee Benefit Program Changes

In December 1955, the Company introduced improvements in the Shell Pension Plan. Shell Provident Fund, and the Shell Hospital-Surgical-Medical program.

The revisions to the pension plan generally afford employees the option to continue in active service beyond "normal retirement age" and until age 65 (age 60 for women). This option does not in any way change an employee's right to retire at any time after he has earned a vested right in any type of pension under existing rules and regulations. In addition, the Social Security offset against Shell pensions has been limited to \$85 per month, whereas, the maximum Social Security payments have been increased to \$108.50 per month. Thus, employees will receive full benefit of any Social Security payments in excess of \$85 per month. Furthermore, a minimum full pension of \$150 per month before deductions, with a

Progress at Wood River Refinery is Typical Of Shell's Policy to Constantly Improve Position



THE YEAR 1955 saw the completion of the Main Office Addition, one of the most modern office buildings in the area.

schedule of minimums for proportionate pensions was established.

The Shell Provident Fund regulations have provided that an employee has a vested right to the company contributions after completion of five years service. This provision was changed so that in the event of death, Company contributions are payable without regard to the five-year requirement.

The substantial improvements in the Shell-Hospital-Surgical-Medical program have been covered in individual letters to all employees. The fact that 96 per cent of those eligible enrolled in the program is indicative of the popularity of the improvements made.

General Wage Increase

In March 1955, the Company granted a general

wage increase of approximately 4 per cent for all employees.

The introduction of these policies by Shell is typical of the progress made throughout the Company and at Wood River Refinery. Shell's paramount interest to provide the best for employees and consumers was reflected in the 1955 program.

Major Projects Completed

At Wood River, 1955 saw the completion of at least three major projects for plant improvement. Included in the completed projects are additions to the Main Office and Wash House No. 8. The completion and occupancy of Shops One and adjacent office facilities also took place during 1955. In addition to the completion of these buildings, 1955 also saw the Control Lab addition rapidly nearing completion, and construction work on the extension to the Research Laboratory progressing.

The steady growth of Wood River Refinery - operating and technical advancements which have increased the plant's potential crude throughput from 25,000 barrels daily in 1918 to 170,000 barrels today - has been furthered this year with the completion of projects related to the units which went on stream last year and in 1953.

With the coming-on-stream in 1953-54 of Wood River's new Distilling, Alkylation, and Platformer Units, the need for increased facilities for craftsmen and operating employees became most important. Thus, during 1954-55 many operating

ties of 600 cars were constructed, one near the South Gate, another as an addition to Lot No. 1. Several existing lots were improved and lot No. 2 has been graded and is to be paved, when weather permits, for the convenience of employees.

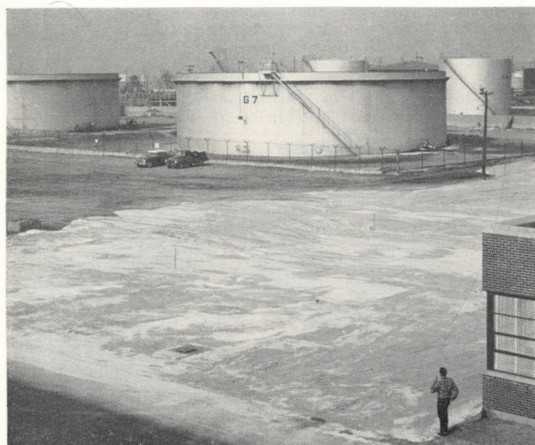
In August of 1955, the announcement of the Refinery's proposed \$1,000,000 Effluent Control project was made. Design work on the project is finished, and construction will begin soon. This program constitutes a major improvement in the refinery's waste disposal system, and reflects the Company's policy in all locations to act in the best interests of communities near refineries and other installations.

Assures Job Security

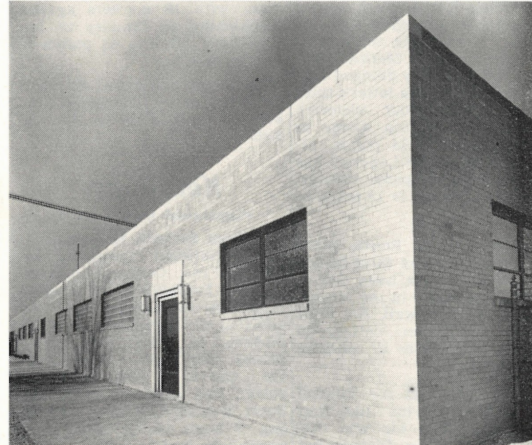
This steady growth is a trade-mark, not only of Wood River Refinery, but of Shell Oil Company. During the first nine months of 1955, Shell on a Company-wide basis, had capital expenditures totaling \$214,000,000. This money, spent in drilling new wells, modernizing and building refineries, service stations, and research installations is actually an investment in the future of Shell employees.

At Wood River, money spent for additions to existing buildings, operating units, and craft shops, plus the future work on Shops Two, Research Laboratory, and other projects is similarly another step in improving job security with Shell.

During 1956, Shell employees can look back on 1955 and view with pride the many outstanding accomplishments. In the years ahead, employees can feel more secure in the satisfaction of knowing that the Company, as in 1955, is constantly striving to maintain and improve its position in the oil industry.



NEW PARKING LOTS, like the one west of the Personnel and Industrial Relations office, have increased parking facilities at the refinery. In addition to the construction of new parking lots with the combined capacity of 600 cars, several existing lots were improved.



WASH HOUSE EIGHT addition was one of the important improvements made at Wood River Refinery during 1955. The South Gate Wash House can now accommodate 1000 employees, and includes modern locker, shower bath, and washroom facilities. A new parking lot has been constructed east of the Wash House for added convenience.

SPORTS

Fiery Firecrackers



THESE MARRIED LADIES, wives of Shell employees, make up the Firecracker bowling team which copped the first-half championship in the Women's Bowling League. Left to right are Bernice Holtman, Fern Bruns, Norma Nagy, Mary Ayres, and "Tootsie" Nash. Missing when the picture was taken was the sixth member of the team, Mrs. Irene Stetson. The Firecrackers won 33 games and lost 21 in winning the first-half crown.

What's this? Dispatching Not in Basketball Lead!

The Laborers are giving the Plant Basketball League a "new look" this year for the first time in several seasons. For the first time since 'away back, Dispatching isn't in first place, but in the No. 2 spot. With five victories against no losses, the Laborers are now the team to beat, with half the season yet to be played.

Paced by King and Wigger, the Laborers have scored 259 points in five games for an average of 52 points per game. King has scored 104 points in the five contests for 21 markers a tik. Wigger has played in three games and scored 46 points.

The Dispatchers have found a new scoring champ since last year in Bobby Garner, who excels in pitching the softball in the summertime. Garner has taken up the slack left by high-scoring Kenny Zumwalt, who has played in only three games this year. Bobby has hooped 101 points in six games for a 17 point average. Zumwalt is running second with 29 points in his three games.

Distilling Is Third

Distilling lost a tough one to the Research Lab on January 19 playing without the services of their ace scorer, Merlin Hubbard. The Lab boys dumped Distilling, 37-27, for the latter's third defeat against four victories. Hubbard is the top scorer in the league with 114 points, although King of the Laborers has a better point per game average. Hubbard's average is 19 per contest.

Research is in fourth place with three wins and three losses. The Research boys have one of the better defenses in the league, and can score as well. Jim Price is their top scorer, netting 10 points a game with 62 markers in six outings.

In fifth place is the Control Lab with two wins and four losses. The Lab's big win this year came against Dispatching in a close, 42-41 contest. Their other win came against Treasury, 30-20. Becker is their top point-getter with 44 points in five games.

BASKETBALL STANDINGS

Team	Won	Lost	Pct.
Laborers	5	0	.1000
Dispatching	4	2	.667
Distilling	4	3	.571
Research	3	3	.500
Control Lab	2	4	.333
Treasury	1	5	.167
Engineering	1	5	.167

Tie for Basement

Treasury and Engineering are fighting it out for the cellar with one win and five losses in six attempts. Engineering whipped Treasury in a close one, 23-22, and the Treasury won from the Control Lab in another thriller, 27-25. Appleby and Kaufman are the top scorers for Engineering. Appleby netted 62 points in six games for a 10 point plus average, and Kaufman, with 19 markers against Dispatching on January 19, has upped his total to 43 points in five games.

Bill Roche has scored 42 points for Treasury in five games, and Bill Brewer has 38 in six contests.

Ken Boyer

(Continued from page 6)

From Seventh to First?

The National Leaguers, including the Cardinal players, look for Brooklyn to be tougher than ever this season with the addition of "Handsome Ransom" Jackson at third base. The Brooks acquired Jackson from the Cubs in a deal which involved Don Houk last fall. But Boyer wouldn't count the Cards out. "I know that a jump from seventh to first is quite a hop," Boyer admitted. But he added, "We'll be trying to do just that this year, and we'll be counting on the fans for their support."

Bowlers Trim Westerner Keglers in Close Match

Shell nipped the Westerner Club in a five-team bowling match Sunday, January 22 by a slight margin of 64 pins to gain revenge for last year's defeat by the Olin-Mathieson boys. The Acme Alley match saw both teams having trouble, and most of the good bowlers just couldn't get going.

The total pin score was: Shell - 12,745; Westerner - 12,681. The Westerner Club's total included a 357 pin handicap doled out by the Shell men.

Grover High Man



Jess Grover

Jess Grover, the old reliable, was once again high man for the Shells. He had a 591 total on games of 181, 201, and 209. Harold Taul was second with 588, and Lew Oden had a 579 series for third place. Other "500" bowlers for Shell included Kenny Zumwalt, 549; Frank Hackenthal, 546; Johnny McConnell, 538; Ray Schindewolf, 535; Harold Dolan, 530; John Decker, 528; Joe Schilling, 525; Pete Dochwat and Dave Patton, 509; Glenn Andrews, 506, and Bruno Tassan, 503.

The Westerner Club had only eight bowlers over 500. Their top man was Ballard, who hit 616 with games of 180, 224, and 212.

In the runner-up spot for Westerner was VanMeter with 572. Van hit 180, 182, and 210. Their third-high man dropped down to 539. Eden, anchoring their No. 4 team, hit that total on games of 167, 174, and 198.

Good Bowlers Off

However, even with 14 of the 25 men hitting for "500" series, several of Shell's good bowlers were off their pace. Joe Nagy had a bad day with 491, including a low game of 138. Dave Patton, although he hit 509, had a mediocre day with games of 148, 159, and 202. Ted Madosh and Mel Hubach, both 175 bowlers, had so-so days with 469 and 489 respectively. Big Bob Kapp, posting a 181 average in the Super Shell League, slumped to 486, and Julie Brown hit only 429. Elmer Gillis, for years one of Research's top bowlers, dropped to 413.

The bright spots in the Shell attack were Jess Grover, his usual steady self; Harold Taul, who hit 588 on games of 170, 180, and 238; Lew Oden, with a good 579 series on 167, 288, and 224, and Frank Hackenthal with 162, 170, and 214 for a 546 day.

Taul Has the Spot!

Harold Taul definitely had the spot! He must have thrown over 20 strikes during the day, but had trouble on his spares. In his best effort, a 238 game, Harold had a miss, six strikes in a row, then two straight misses. But he doubled and got 29 pins in the 10th frame for a top score.



Harold Taul

Four out of the five Shell teams won individual matches. The only team to be defeated was the Number Five outfit who lost two out of three. This team, made up of Brown, Zumwalt, Dolan, Decker, and Gillis, salvaged their final game, 864-812. Zumwalt's 199 in this game and Dolan's 188 put the Shell boys over.

Shell Two enjoyed the biggest margin of victory with a 244-pin advantage over their opponents. This team was composed of Thompson, McConnell, Dochwat, Hackenthal, and Farley.

Watch for New Teams Coming to the Front

Plant Bowling Leagues Tighten Up

Things are really knotted up in all four Shell bowling leagues after the first few weeks of action in the third quarter of the season. The first half roll-offs having been completed, the teams are now concentrating on getting into position for the third-quarter crown. And unless some of the teams make strong surges during February, it looks as if some new faces will be seen in the succeeding roll-offs.

The first-half championships went to — yes — the Electricians and Machinists in the Premium League; the Control Lab in the Super Shell; the Cracker Box in the X-100, and the Fab Shop in the Golden Shell. All of the winners are assured of a roll-off for the plant league championship in May.

Premium League

The Dispatching Gaugers, after going down to the wire with the Electricians and Machinists in the second quarter, aren't giving up and at this stage of the game, and are in a first place tie in the Premium League with four wins and two losses. The Electricians and Machinists and the Inspectors have similar records.

X-100 League

Over in the X-100 League, it's anybody's guess. The Bulk Depot lost out against the Cracker Box for the first half crown, and are currently in sixth place with two wins and four losses. The Cracker Box is having trouble right now with three wins and three defeats, putting them in fourth position. Fighting it out for first place in the early weeks of the third quarter are the Whiz Kids, Tech Department, and the low-averaging Plant Tech team, all with four wins and two losses.

Super Shell League

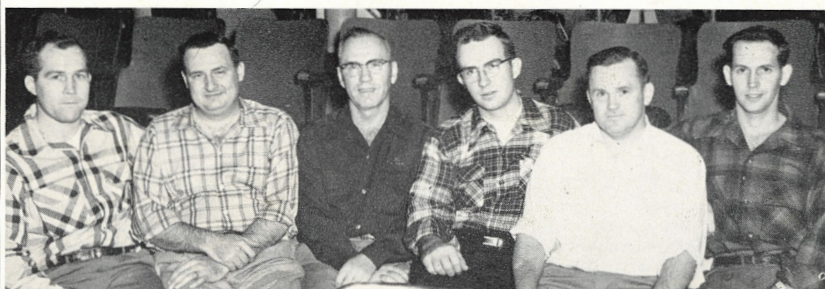
In order to win the Super Shell championship, some team is going to have to step up and stop the Control Lab, hotter than a Colt .45 in the past several months. The Lab boys won the

second quarter going away with 21½ wins against only 5½ defeats for a sensational percentage. They turned right around and copped the first-half roll-offs against the Fire and Safety team, winning out two games to one.

Golden Shell League

The Golden Shell loop is another toss-up, although the Research Ramblers, paced by Judd's 173 bowling, have looked tough of late. The Ramblers lost to the Fab Shop in a thrilling play-off series for the first half championship, but now seem more determined than ever to wrest the crown. The Ramblers are in a first-place tie with the Engineering Mixups, each with similar 4-2 records.

Research Pilots



THE RESEARCH PILOTS, who have been in the thick of things in the Super Shell League all season, are trying to make their move now in the third quarter. Left to right are, Price, Beam-blossom, Gillis, team captain, Peat, Stetson, and Luketich. Other men who have been bowling with the team are Ellis, Taylor, Greenshields, and Reedy. The Pilots are now in third place in the league with five wins, and four losses.