

THE



REVIEW

VOLUME 18 — NUMBER 11

WOOD RIVER, ILLINOIS

NOVEMBER, 1955

Service Club Holds Elections

Six veteran employees have been nominated for the four official positions in the Shell Service Club. Ballots for the election of the 1956 officers will be mailed out December 1, according to C. L. Baker, Service Club president.

The nominations were made at the Annual Barbecue last July, and they include three men who are now holding offices with the club.

Bethards vs. Bierbaum

Nominees for president include L. E. Bethards, current vice president of the club, and L. R. Bierbaum, Cracking, who ran for president in 1954. Vice presidential candidates are H. F. Sparks, secretary this year, and J. C. (Cy) Gorman, Compounding.

SEE PAGE 3 FOR CANDIDATES' PICTURES

F. E. Zapf is the lone candidate for secretary, as is W. A. Sullivan, Engineering, for treasurer. Zapf is now treasurer of the Service Club.

Address Ballots

In an effort to emphasize fairness in the election, the Service Club officers this year are mailing out ballots individually addressed to each member. They will be mailed December 1, and should be returned to the club by December 15.

The present officers encourage all club members to take part in the election, and to return the ballots in the allotted time.

Johnsons', Holtmans' Come from Behind to Win Bridge Tourney

Mr. and Mrs. C. K. Johnson and Mr. and Mrs. F. F. Hoffman came from behind to win the Annual Team-of-Four bridge tournament, sponsored by the Shell Duplicate Bridge Club. The final playoffs between the Johnson-Hoffman team and the J. L. Bame-L. W. Holtman team were held November 27 with the winners overhauling the losers by a margin of 1700 points.

The winning team had to come from behind to win the tourney, which ended in a tie the week before. The Johnson-Hoffman team had previously lost one game, and had they lost another, would have been counted out. But a week ago, they trounced the Bame-Holtman foursome, and it was all knotted up. The Bame-Holtman team had previously been undefeated.

This was the wind-up of the tournament, which began last February. In all, 32 people comprising eight teams entered the sessions.

Easy Does It



TOOL ROOM MAN L. D. Felton, left, hands a length of hose to truckdriver D. G. Skinner, through the new Central Tool Room's truck window. The Tool Room has moved to the former Machine Shop building on the Main Office Road. The new quarters offer the Tool Room added facilities for storage as well as a more centralized location. A feature on the Tool Room is on page 5 in this issue.

Employees Contribute Over \$9,178.65

Community Chest Drive Sets Record

Community Chest contributions by employees of Wood River Refinery have already reached a record high, even though final tabulations have not been completed. According to R. J. Greenshields, chairman of the drive, donations totaled \$9,178.65 on November 28, with \$1,302.60 slated to be forwarded to the Edwardsville Community Chest agency.

This surpasses a previously high total of \$8,567.79 collected in 1953. The 1955 total is also \$1,656.55 higher than last year's total of \$7,522.10.

Participation Highest

Over-all participation in this year's drive also has established a record for Shell employees. To date, 81 per cent of the employees solicited have contributed something for the Community Chest. Greenshields said that he expected the drive to be complete in a few days, with each dollar adding to the current high total.

Solicitations this year were handled on a departmental basis. Chest representatives were appointed in each department, and where possible employees were approached personally.

Supports 10 Agencies

Money collected in the drive will be used to help support 10

Red Feather agencies in the Alton-Wood River area. These include the Boy Scouts, Girl Scouts, Y.M.C.A., Y.W.C.A., Catholic Charities, Visiting Nurse Association, Hillcrest House, Salvation Army, Illinois Children's Home and Aid Society, and the Wood River Recreation Committee.

Don't Forget
The
Christmas Party
December 15
FREE

Christmas Party Scheduled Dec. 15

Plans have been completed for the Annual Shell Christmas Party, to be held Thursday, December 15, at the Wood River high school auditorium. The party, annually sponsored by the Shell Service Club, is scheduled to begin at 7:30 p.m. All Shell employees and their families are invited to attend, and tickets for the event will be mailed out in the near future.

According to C. L. Baker, Service Club president, approximately 2500 persons are expected to attend the Christmas Party. The club has made arrangements for what they feel will be an outstanding program, consisting of professional vaudeville talent, free attendance prizes, and, of course, Santa Claus!

Eight Acts Featured

Eight professional acts have been signed to appear in the show, and they promise to be a versatile and entertaining group. Included are Pinky the clown; Lou Morgan, comedy bicycle and unicycle act; Freddie Waldmann, Rose of Sharon horse act; Miss Erma's K-9 review; a roller skating act; Don Amato, European juggler; Prince Budda, a magic act, and Ted Davenport and his monkey, a comedy presentation.

In addition, 12 turkeys will be given away as attendance prizes. Tickets for the turkeys will be awarded at the party, and the birds can be picked up at a Wood River grocery store at the winner's convenience.

Santa Will Be There!

And good old Santa Claus will once again make his appearance at the party in all his glory. He will pass out free gift stockings to all the children following the evening's program.

Service Club officers urge all employees to make certain they have their tickets for the annual affair, as no one will be admitted without one.

Have You Reviewed Your Provident Fund Beneficiary Lately?

The beneficiary you named sometime ago for your Provident Fund and Group Life Insurance may not necessarily be the one you would designate today.

It is wise to review your choice of beneficiary from time to time in the light of your current circumstances. You may also wish to re-examine the method of settlement you have chosen for the payment of your Group Life Insurance policy.

If you wish to change your beneficiary or the method of settlement on your Group Life Insurance, report to the provident fund and insurance clerk respectively in the Personnel and Industrial Relations office.

Blue Cross Plan

Employees who have coverage for themselves and their dependents under the Blue Cross plan are reminded that when dependent children marry or reach their 19th birthday, coverage and protection ceases.

However, application for continued membership may be made by employees writing directly to the Blue Cross-Blue Shield Plans, 425 North Michigan Avenue, Chicago 90, Illinois. In this manner, dependents may receive individual certificates in their own names.

Under the Blue Cross-Blue Shield plan, this application must be made within 31 days of any change in status of the dependent.

A Merry Christmas for Needy Children

Shell to Co-Sponsor Annual 'Toy Time' Drive in Area

The Second Annual Toy Time Drive in the Alton-Wood River area will be co-sponsored by Shell beginning December 3. The drive, which is aimed at collecting good, serviceable toys for underprivileged youngsters, will continue until December 17. The Salvation Army, Alton Marine Corps Reserve, and the Shell Service Club will coordinate the drive, using Shell service stations in the area as collection points.

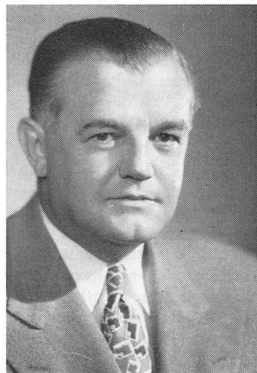
"Toy Time" has been sponsored in major cities throughout the country with great success. It has been particularly successful in St. Louis and Cleveland. In St. Louis, the Marine Corps annually sponsors the event, and last year reached a record high for number of toys collected.

Persons wishing to donate good used toys in the drive need only to drop them off at any Shell station in the Alton-Wood River area. The Shell Service Club will pick up the toys, and they in turn will be distributed by the Salvation Army and the Marine Corps.

Vice President Davis to Retire; McOmie Upped

C. E. Davis, Shell Oil Company's Vice President - Refining, has announced his intention to retire at the end of this year, according to a recent Head Office Management Letter.

It was also announced that R. W. McOmie, Manager of Shell's Anacortes Refinery, has been promoted to Head Office as General Manager - Refineries, effective January 1, 1956.



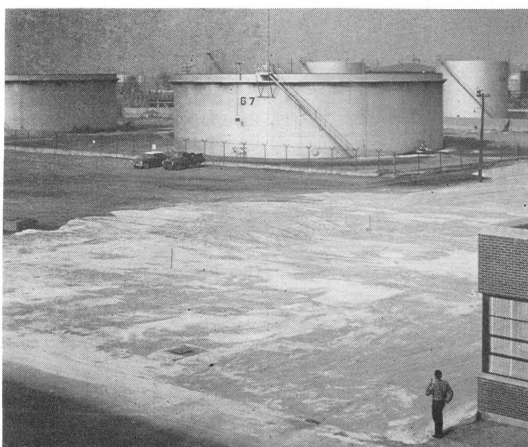
C. E. DAVIS

Davis began his Shell career in 1917 as a shipping clerk at the Cushing, Oklahoma refinery, and subsequently occupied positions at Wood River and three other Shell refineries. Davis has been invited and has accepted the position as General Secretary of the Fifth World Petroleum Congress with headquarters in New York City. This appointment is for a period of four years.

McOmie joined Shell as a chemist 29 years ago, and has held various technical, operating, and administrative positions with the Company. He has been associated with the Anacortes installation for approximately two years. As Anacortes Manager, McOmie has guided the plant's construction and operation through the "coming on stream" stages.

R. C. Barton, Superintendent at Anacortes, has been promoted to Refinery Manager there. His Shell service

Parking Lot Extended



This view of Parking Lot Two west of the P. and I. R. office, shows expanded facilities which will replace parking space across Route 111. A highway is to be built through the old parking area, and Lot Two is expected to be ready for use soon. Employees using this area will enter and leave via the gate leading through the visitors' parking lot. It will mainly provide parking area for Research, Products Application, Marketing, P. and I. R., and Main Office personnel.

Expansion of Parking Lot Facilities Nears Completion

Work on the expansion of parking lot facilities at the refinery has virtually been completed. Lot number One, south of the cafeteria, has been expanded and lighted, and Lot Number Two, west of the Personnel and Industrial Relations building, will be ready for service soon.

Lot Number One, south of the cafeteria, will provide parking space for employees who work inside the plant and those who use the main gate, plus some of the Main Office people. In general, employees who live south of the refinery and approach it from that direction will use this lot.

Lot Number Two will provide parking area for employees of the Research Laboratory, Marketing, Products Application, Personnel and Industrial Relations, and Main office personnel.

began in 1934 as a chemist and in subsequent years he has held operating and technical positions on the West Coast. In 1949, he was appointed Superintendent of the Martinez Refinery, a position he held until his assignment earlier this year to the Anacortes Refinery.

J. B. Wyman, Assistant Manager of Head Office Manufacturing Operations Department, will become Superintendent of the Anacortes Refinery.

Following completion of this project, the lot across Highway 111 will be abandoned, and this area will be used for a state highway which is to be built soon. Employees using Lot Number Two will enter and leave the plant through a gate leading through the visitors' parking lot.

For further information, watch your local bulletin board.

Youngest in History

Charles Slavik's Daughter Named To Philharmonic

Suzanne Slavik, 12-year old daughter of Mr. and Mrs. Charles Slavik, Edwardsville, has the distinction of being the youngest member of the St. Louis Philharmonic orchestra in its 96-year history. Suzanne's father is employed in the Compounding Department here.

Miss Slavik was accepted as a violinist for the 1955-56 season by the orchestra's auditioning staff recently.

Suzanne began her studies at the age of 6 under her father, who is also a violinist with the orchestra. For the past three years, she has been a pupil of Russel Gerhart, the symphony conductor. Suzanne is in the seventh grade at Edwardsville Junior high school.

Basic Design Work on Effluent Project to be Completed by Dec. 15

Basic design work on the new Effluent Treating facilities in West Property will be completed by December 15. Construction is scheduled to start early next year.

This plant will constitute a major improvement in the quality of the refinery effluent. The new slop oil filtration unit is now operating on a full-time basis, and is removing solids from the slop oil and blow-down oil, making this material suitable for reprocessing.

Work is Virtually Completed

Older Section of Main Office Gets Face-Lifting, Now Looks Like New

With the occupancy of the Main Office Addition, improvements on the old Main Office are rapidly nearing completion. A large amount of work on the interior has been completed, and revisions to the exterior of the building are finished.

The main stairway in the old building has been enclosed in brick, with doors leading off to the basement, first, second and third floors. Extensive re-tiling to the floor on all levels has been finished, and most of the interior has been completely re-painted. The painting in the old section corresponds to that in the new building.

Engineers on First Floor

With Engineering occupying the entire first floor of both Main Office buildings, several partitions were added to the old section to house office and blueprinting facilities. Engineering Estimating will occupy the east side of the first floor, which formerly housed Engineering Management personnel. The switchboard remains in its former location to the right of the main entrance.

The Technological Department will occupy the old section of the second floor, which also has had a face-lifting. This floor will include various technological offices as well as the Assistant Chief Technologist's office.

Library on Second

A library will occupy the large room on the south side of the second floor, and office and file space will also be provided on this side of the building. Like the first floor, the second has been re-modeled to correspond with the interior of the new building.

The Shipping Section has been provided with additional space on the third floor of the old building. Several desks are located in the large room near the third floor entrance, and additional shipping offices are in the east end of the building.

New Tabulating Rooms

Tabulating has been provided two large rooms on the third floor, both of which have been remodeled. Key-punch operators are on the south side of the building, with the IBM installation on the north side. The IBM section has been sound-proofed for added improvement.

The entrance to the old section has been re-modeled. The large shelter-type doorway has been torn down, with the resulting entrance resembling that of the new addition.

Shrubbery and sod have been added to the grounds near the Main Office, and the over-all "new look" is rapidly making itself visible.



"Please remember that you work here, Miss Lush. Stamp those letters as you pass!"

S. R. A. Sponsors Final 1955 Dance On December 2nd

The Shell Recreation Association will sponsor a "Nomination Dance" Friday, December 2 at the Godfrey Civic Center. Admission will be granted on the presentation of SRA membership cards for 1955. Music will be supplied by Al Rezaabek and his orchestra, and the dance is scheduled to begin at 9 p.m.

This will be the SRA's final social event of the year. A dance was held two weeks ago at Collinsville Park, for which complimentary tickets were distributed to all members.

The present Board of Governors for the SRA will be winding up two years of tenure on December 31. The in-coming board, which will be elected in January, will begin their two-year slate at that time.

Chairman of the SRA board J. O. (Jack) Harris issued a special invitation to all members to attend the Dance December 2. Nominations for 15 members to the board will be held at that time.

In contrast to the Shell and Service Club, the Recreation Association Board of Governors, following their election by members, in turn elects their own officers. Officers thus are elected from within the board itself.

Following the 1956-57 election, the SRA will begin their annual membership drive, which next year will be aimed at obtaining 2000 members.

New Tabulating Quarters



NEW TABULATING OFFICE on the third floor of the old section of the Main Office has been completely re-modeled. The IBM section of Tabulating now has added facilities, increased room, and more effective lighting in their new quarters. The office has also been sound-proofed for added efficiency.



Published monthly for the employees of the Shell Oil Company, Wood River Refinery.

JIM KAHMANN Editor

REPORTERS

Operating Departments F. E. Zapf

Engineering Field L. W. Linebarger

Research Laboratory J. A. Bowman

Main Office Marilyn Simberger

Safety E. B. Wiley

Address communications to Editor, Shell Review,
Box 262, Wood River, Illinois. Phone 563

Scroggins' Best!



"CHIPMUNK", a picture taken by Ken Scroggins, Control Lab, received first place in the "Picture of the Month" contest, sponsored by the Greater St. Louis Camera Council. This black-and-white reproduction of the original colored slide was processed by Orville Abernathy, Electrician Foreman. Each month, the Shell Camera Club sponsors a slide contest, awarding first, second, and third places to the members' entries.

Membership and Activities Increase

Shell Camera Club Members are Enjoying a Most Successful Year

Members of the SRA-sponsored Shell Camera Club, which this year has more than doubled its membership over 1954, are rapidly becoming known throughout the area as roving ambassadors of good will. Although primarily noted for their interest in picture-taking, members of the club have recently branched out into extra-curricular activities.

The club's normal activity ranges from covering most Shell-sponsored social events to showing colored slides at their regular meeting on the first Tuesday of each month.

New Areas

But in the past few months, many of the local photos have branched out into other areas.

Ken Scoggins, for instance, after winning the local monthly colored slide contest, entered his masterpiece, "Chipmunk", in a similar contest sponsored by the Greater St. Louis Camera Council. Ken not only walked out with first place among all the amateur entries, but later on in the evening also copped first among all slides entered - both amateur and professional. The St. Louis Camera Council consists of members from most of the camera groups from the greater St. Louis area.

Another interesting activity of the group recently has been the sponsoring of a colored slide show for patients at the Alton State Hospital.

Officers Are Active

Under the present leadership of Jerry Branham, Roger Ruedin, and Robert McFarlane, the Camera Club has developed into a family affair - a club which appeals

not only to the parents, but the youngsters as well. Meetings are noted for their informality and all-around family-type appeal.

Each monthly slide contest winner has his picture mounted on the SRA bulletin board in the cafeteria, and other items of interest can usually be found on the bulletin board in front of the clock house. Pictures which have attracted the most interest recently have been Lewis Morgan's "Picture of the Year", a colored slide called, "Robbins feeding", and Bob Benter's "Shell Sign." Benter's picture has been hung in the Reception Room of the Main Office Addition.

Organizational Structure

Organizational structure of the Camera Club, in addition to its officers are: Member Relationship - Carl Nevin, Building - Jack Turner, Technical - Orville Abernathy, Jim Fallon, Equipment - Stan Smith; Welfare - Bill Tryon, Publicity - Chuck Andrews, Entertainment - Ray Thrasher, Dick Schulke, St. Louis Camera Council Representatives - Ray Thrasher, Orville Abernathy.

All members are required to be SRA members.

Products Pipe Line Establishes Indiana Quarters

The Products Pipe Line Department is now in the process of establishing a general field office in Indianapolis, Indiana, to provide better operating efficiency.

Policy in New York

H. E. Dischinger, Department Manager, and appropriate staff will remain in New York to formulate policy and maintain liaison between the field office and other Shell departments and companies.

V. K. Leonard, General Superintendent, will move from New York to Indianapolis. Superintendents of the Northern and Central Divisions and their staffs are transferring to the new general office at Indianapolis from East Chicago and Zionsville, Indiana. Also at Indianapolis will be Dispatching, Product Control, Engineering (Design, Project, Research and Development and Corrosion), Right-of-way and Claims, Purchasing-Stores, Personnel and Treasury functions, and control equipment for dispatching products movements.

Indianapolis Centrally Located

Indianapolis was selected because of its accessibility to the pipe lines in the Northern, Central and Eastern Divisions, and because of favorable living conditions. The office will be housed in a new building to be completed next year. Temporary quarters have been leased to accommodate payroll and other staff.

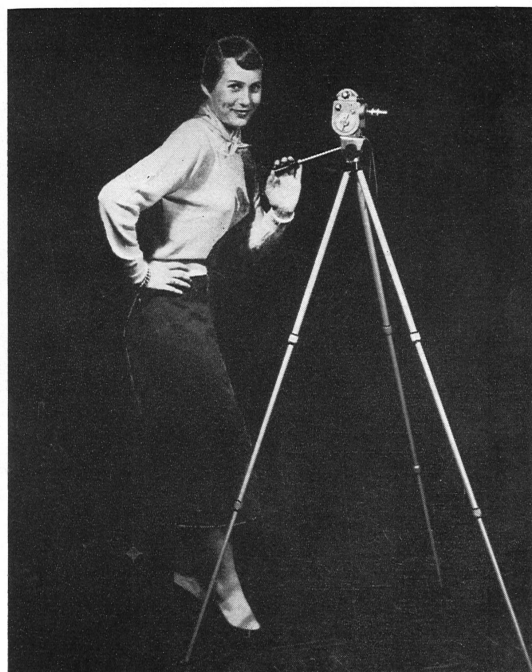
Tip From Tippet



JOHN TIPPETT, Boilermaker Helper, recently prevented a serious accident when his safety goggles absorbed the blow of a 3/4 inch bolt which snapped off while Tippet was using a rivet buster at Tank B-48. Tippet was cutting the bolts when suddenly one struck him in the left eye, fortunately protected by a pair of safety goggles. The hardened safety lens, absorbed the force of the blow, broke into a hundred pieces, but held together in the goggle frame. Boilermaker Charley Henson was within two feet of Tippet and saw the accident. Both men agreed that the safety goggles definitely saved Tippet the loss of his left eye.

Introducing . . .

Miss Nancy Pohlman



MISS NANCY POHLMAN, hired last month as a comptometer operator in Payroll, is one amateur photographer who wouldn't have trouble finding subjects to pose for her. That is, if she were an amateur photographer. Actually, Nancy, who lives in Grafton, is more interested in firing rifles and shotguns. Nancy is also interested in swimming, ice skating, and basketball. She is the daughter of Mr. and Mrs. Raymond Pohlman.

Receiving Heavy Patronage

Ohio Turnpike Features Four New Shell Stations

Motorists have given heavy patronage to the four Shell service stations opened in October on the new Ohio Turnpike. The stations are in pairs, one on each side of the highway, each serving the traffic moving in one direction.

These sets of stations are part of "plazas" where tourists are also offered restaurant, parking, and picnic facilities.

The Ohio Turnpike stretches 241 miles across the northern section of the state, connecting at the Ohio-Pennsylvania border with the Pennsylvania Turnpike, and at the Ohio-Indiana border with the location for the Indiana Turnpike, to be constructed in 1956.

The Shell stations are strategically located for high volumes of traffic and are 101 miles apart. One set is about 30 miles east of Cleveland and the other about the same distance east of Toledo. There are eight plazas on the turnpike.

Shell has also bid successfully for stations on the Indiana Turnpike.



Candidates for Service Club Offices



L. E. Bethards
For President



L. R. Bierbaum
For President



H. F. Sparks
For Vice President



J. C. Gorman
For Vice President



F. E. Zapf
For Secretary



W. A. Sullivan
For Treasurer

The Odor Panel—They **SMELL** the Difference

SHELL OIL COMPANY'S activity in the field of quality control—which continually maintains our many products at a high level—is exemplified by many methods of laboratory testing.

In order to maintain and improve product quality, the refinery employs a well-organized and extensive testing program. This program includes routine tests, performed in the Inspection Laboratory, and special tests carried on in the Analytical Laboratory, both sections of the Control Laboratory. These tests make use of a wide variety of laboratory equipment, such as distillation, colorimeter, hydrometer, viscometer, and flash point apparatus. These test instruments, and the people who operate them, serve as a constant vigil—an intensive campaign to pinpoint any variance in the established quality level.

Together with the field work carried on by the Products Application Department, these laboratory tests, administered by competent personnel and coupled with efficient operating techniques in the refinery, play an important part in assuring the superior quality of Shell products.

Odor Test is Subjective

Included in this rigid quality control program organized by Shell at Wood River is a completely subjective testing program carried on by a group known as the Odor Panel.

Members of this group actually act as a judge and jury, rating the odor quality of Shell specialty products. Whereas most of the other tests are carried on through the use of laboratory apparatus, the Odor Panel is completely physical. The six members of this board check the quality of Shell naphthas and solvents by smelling sam-

These Gentlemen Put Their Proboscis to Work by Smelling Our Specialty Products — And They Help Keep Shell on Top!



D. L. Korte

R. A. Greger

H. J. Leamy

R. C. Wilbur

C. A. Davidson

J. R. Foote

ples of the many refinery-produced specialties.

The members of the panel include R. C. Wilbur, Department Manager (Control Laboratory and chairman of the group); H. J. Leamy, Light Oil Treating Manager; C. A. Davidson, Training Supervisor; J. R. Foote, Chemist-in-Charge of the Inspection Laboratory, and R. A. Greger, Experimental Lab Technologist. In addition, the Control Lab shift foreman checks the samples on the night shift, and A. P. Ferrucci, Products Application, is on the panel for Shell Sol 72.

An Important Check

The panel is of major importance because its members are providing a constant check on a most important phase of Shell's business—specialty products. Shell's per cent of sales' increase in this particular field has been exceptionally high. One of the most extensive developments in specialties is that of Shell Sol 72, an odorless

paint thinner on which research work was handled at Wood River's Research Laboratory. But the company's progress in the entire petroleum solvents' field has been equally outstanding, and Shell is constantly endeavoring to improve the odor qualities of all such products.

The Odor Panel's work is physical in nature. Small quantities of finished tank samples, line samples, and occasionally competitive samples are brought to its members almost daily. By carefully smelling each small bottle, and comparing its odor with that of a reference standard, the members place the samples into one of three categories: "Pass", "Borderline", or "Fail".

Odor comparisons are made in specially-designed, glass-stoppered bottles using identical amounts of sample. No individual knows how the other members of the jury have rated a given sample. In the case of Shell Sol 72, a single neg-

ative vote fails the sample, and a clear-cut majority is always necessary in order for a sample to pass the panel.

Good Judgment Required

The responsible job of a panel member requires not only firm conviction, but other important attributes. The Odor Panel member must have a "good nose," one that is sensitive to odor variations. He must have a familiarity with the produce he is sampling, and must also have a high interest in the work.

Possibly most important of all, he must have an operational or testing background with the company—experience which must tell him what is wrong with a given sample. If he senses an odor that doesn't belong, he should be able to form an opinion concerning what has caused it.

Panel members must constantly be aware of unwanted properties, such as sulphur compounds, oxidized smells, aromatics where they don't belong, etc.

How Do They Know?

One might ask how the panel members know when a specialty product has a wrong aroma, an unwanted scent. This question is partially answered by considering the members' know-how and experience. But they also have reference standards which have previously been formulated and approved. These standard samples are representative of current high quality for each individual specialty, and serve as a basis of comparison if needed.

The combination of advanced operation processes, more rigid testing programs, and quality control activity, plus good salesmanship, have established Shell as a leader in the specialty market. This competitive field is becoming an increasingly important aspect of Shell's business.

And much of the credit must go to the men of the Odor Panel—there is still no substitute for their sensitive smellers.

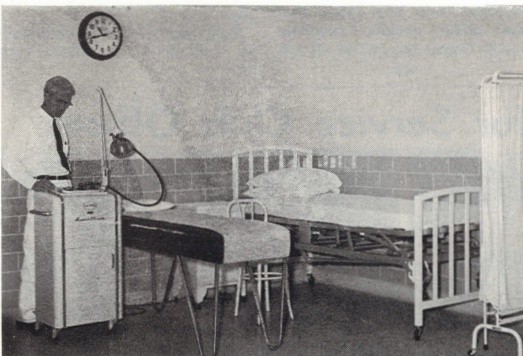
Bus Company Returns Watch to Pensioner's Wife

Julian G. Jones, former Shell employee who retired in 1949, chose a gold watch for his wife instead of himself on his 25th anniversary with the company.

After Jones died in 1952, the watch was cherished even more by Mrs. Jones.

This month, Mrs. Jones lost the watch, and naturally became quite upset about it. But recently the Trailways Bus Company found the watch and called the refinery in an effort to locate Mrs. Jones. The combination of the engraving on the back of the watch, the honesty of the bus company, and the Personnel and Industrial Relations files have since returned the watch to the owner.

In-Plant Hospital



IN-PLANT HOSPITAL facilities are offering quick medical attention to all employees working east of the railroad tracks near the Compound House. Operating only on days, the Hospital is under the supervision of C. H. Denny, Registered Nurse. Nurse A. H. Mikkelsen here points out the Microtherm machine.

Handles Cases East of Compound House

In-Plant Hospital Offers Quick Medical Attention

The In-Plant Emergency Hospital, which opened in the Maintenance Shops office building on April 25, offers employees working east of the railroad tracks in the refinery added convenience in obtaining prompt medical attention.

This fact was proven this month by Hospital records, which show that during the past seven months, 1,184 employees have been treated at the new location. The In-Plant installation, which operates in conjunction with the Main Emergency Hospital in the P and IR office, has handled a total of 1,085 nurse's cases and 99 doctor's cases.

C. H. Denny, Registered Nurse in charge of the hospital, added that the In-Plant location also treated 14 contractor's employees

who had been injured in the plant since April, 1955.

The hospital is equipped to handle all types of cases, and features complete emergency facilities. Included are a treating table, a single bed, all necessary medical instruments, and Microtherm and Infra-red heating facilities. The Microtherm machine is used for deep heat treatments, such as back injuries, while the Infra-red helps treat sprains and superficial bruises.

And 65 Miles Offshore—

Shell Now Drilling Wells In Water 100 Feet Deep

Shell will be drilling farther from shore and in water as deep as any company has encountered thus far when operations start in newly-acquired offshore leases southeast of Galveston, Texas.

Accepting this dual challenge of water as deep as 100 feet and offshore distance as great as 65 miles, the Company bid successfully for 18 adjoining tracts of 5,760 acres each—a total of 103,680 acres—at the U. S. Department of the Interior sale of offshore leases in New Orleans in July. It was the largest offshore block ever taken by one company. Subsequently a half interest in the venture was sold to Continental Oil Company, with Shell to be the operator.

Electronic Equipment Used

The biggest problem in drilling this new block is locating the wells so far from sight of land. Improved techniques in pin-pointing a position using electronic equipment were used to stake an initial well, with a projected depth of about 12,000 feet, in 93 feet of water in Block 104A, 63 miles from the Texas coast. Marking the spot at present is a six-foot tower on an aluminum buoy anchored to a 2,000-pound cement block with a 300-foot chain. A light atop the buoy burns continuously and can be seen at night from three miles away.

Drilling will start as soon as suitable drilling equipment is available, probably in December. Plans are to use one of the offshore mobile rigs which Shell has found satisfactory for previous wells. If production is found, the additional problem of moving the crude oil or gas to land efficiently must be solved.

\$5,500,000 Venture

For this acreage, far from previous oil production and in true wildcat territory, the Company paid a total of almost 5½ million dollars. A further rental fee of \$3 per acre annually must also be paid for the five-year period of the lease.

Pinochle Dealer Is Very Generous To Fred Alsberg

F. R. (Fred) Alsberg, Research Lab, has three witnesses other than himself to prove it!

He was dealt a 'double run' in a four-man pinochle game—using a single deck.

This "once in a lifetime" oddity took place November 7 at lunch time, when Fred was in a game with Burl Davis, Fred Hoffman, and Doty Kladar. Alsberg was dealt 11 clubs for the double run, with his twelfth card being the nine of hearts. Lou Jones of Research calculated the odds on being dealt a double run, and came up with this one:

The odds are actually 17,400,000 to 1, or ¼ to the twelfth power!

Asked if he took every trick, Fred said, "Naw, I threw the hand in!"

Shell Gives Allotment For Military Leave

Employees with one or more years service with Shell who enlist or are called to active duty in the Armed Forces receive a service allowance and payment for any earned vacation, plus certain other employee benefits while they are on military leave of absence. Members of reserve organizations which require an annual training period are granted a leave of absence plus certain benefits for a maximum of 15 days in a calendar year.

Refinery Display



WOOD RIVER REFINERY sponsored a display this month at Sears' Department Store in Alton. The store spotlighted the area's industry with an "Industry Appreciation Night", and Shell products were on display in the Plaza street window. A refining theme made up the backdrop for the display, and various refinery pictures were also included. Shell products ranged from lighter fluid to anti-freeze.



THE MAIN COUNTER of the Tool Room is 27 feet wide, and offers ample space for walk-in traffic.

Former Machine Shop Offers Many Advantages

Additional Space is Outstanding Feature of Central Tool Room

With the completion of Shops One north of Stores, the building on the Main Office Road formerly housing the Machine Shop has recently been occupied by the Central Tool Room. Added space, additional lighting, and more centralized storage facilities are but three of many features afforded the Tool Room in the new location.

The completion of proposed future improvements will put the Tool Room in a position to more efficiently handle its job of serving as a focal point from which all tools are issued. Also, the expansion of tool and hose repair facilities—namely more storage and bench space—make the Tool Room a more effective outlet.

Floor Space Doubled

Floor space for tools and related equipment has been more than doubled in the new Tool Room, and future plans call for the addition of specially-designed storage facilities to supplement the present bins and shelving.

The new Tool Room offers several advantages over the former quarters. Trucks carrying or picking up heavy equipment can now enter the building to load and unload with the help of an overhead crane. The new building, featuring a large parking and outside storage area, is easily accessible to all vehicles. Its location near the Main Office Road is another advantage, giving trucks, cars, and scooters the opportunity to park near the Tool Room without blocking the road. The parking area adjacent to the road is scheduled to be black-topped soon.

Another new feature of the Tool Room is a 27-foot main counter, over which the "bread and butter" items, including adjustable wrenches, pliers, pipe wrenches, etc., can be dispensed easily and quickly. Most of these items are stored under or near the counter to insure quick handling.

Better Storage Design

A more complete system of bin-marking and better storage design are other assets which make material-handling easier.



BOB COOPER

Associated tools—the items that usually are dispatched together—are now stored for efficient handling. Tools such as a box wrench and sledge hammer, which very frequently are checked out simultaneously, are stored in adjacent bins.

A notable feature which makes the Tool Room most

flexible is a radio-dispatched truck that makes deliveries and pick-ups throughout the day. A truck window on the south side of the building permits quick handling of material to be transported.

Portable Tool Room

The Portable Tool Room continues to operate in conjunction with the Central Tool Room. This large trailer is normally situated in an area where tools are in heaviest demand, usually at a shutdown site. It is open 24 hours a day, since the Central Tool Room is closed on the 4-12 and 12-8 shifts.

Better facilities now featured in the Tool Room constitute a nucleus for probable expanded operations in the future. A complete centralization of tools and related equipment will be coordinated with the Central Tool Room, which characterizes a new look, as well as a quicker method for dispensing tools of all shapes, weights, and sizes.



TOOL ROOM FOREMAN T. K. (Tom) Turpin, left, and F. C. Hegeman, check an impact wrench in Turpin's office, another new feature of the Central Tool Room.

Over 125 Hear Address by Joe Lucco

Winning Teams Honored at SRA Annual Award Banquet

Over 125 SRA members — all members of winning athletic teams — attended the Annual SRA Awards Banquet November 14 at Granite City. In addition to witnessing the awarding of trophies and Shell jackets, the group heard an address by Joe Lucco, Edwardsville high school basketball, baseball and cross-country mentor.

Receiving jackets for winning Industrial League championships were the softball and bowling teams, both of whom finished at the top of the industrial circuit this past year. The Electricians and Machinists once again were presented bowling shirts in honor of their Plant Bowling crown.



JOE LUCCO

Dispatching Honored

Dispatching once again received trophies for their Plant League softball and basketball championships, and the Oilerettes, Women's Bowling champs, were awarded individual trophies.

Lewis Morgan received a trophy for having one of his photographs voted, "Picture of the Year." Frank Carroll was presented an athletic jacket for selling the most SRA membership cards throughout the year. Golf trophies were presented to Harold Hanbaum, Walt Kress, Garol Brokaw, and George Turnbeaugh—all flight winners in the annual golf tournament. The Alkylation Department won the Plant Golf title this year, and members of the winning team were awarded individual trophies.

Cunningham Accepts Trophies

Industrial team captains Kenny Zumwalt (basketball) and Joe Nagy (bowling) presented their large trophies to G. C. Cunningham, Operations Superintendent, who accepted them in behalf of the company.

Prior to the presentation of athletic awards, the group received highly an address by Joe Lucco, who titled his speech, "My Ten Points for a Successful Person."

Lucco Discusses Success

Lucco discussed "success," pointing out that at times the line between success and failure in life is very thin. He described education as, "What you have left after you've forgotten what you've learned from books." Of success he said, "There are three ways to spell success, and all of them are Work, Work, Work."

He listed his 10 points for a successful person, and touched on each point briefly. They are:

1. Ability to learn to grow.
2. Ability to choose good friends.
3. Have a high opinion of one-self.
4. Be a friend.
5. Have a constructive mind.
6. Possess "sticktoitiveness."
7. Love children.
8. Learn to enjoy life.
9. Learn to put first things first.
10. Possess a Christian attitude.

Lucco stressed the point of knowing what one is doing, having firm plans about life. Illustrating his point, Lucco said, "They tell the story of a football team—everytime the members of the team thought, they lost 10 yards. Don't think—KNOW!"

Over 40 Per Cent of Shell's People Serve At Least 10 Years

Shell people are proud of the high percentage of long service men and women in the Company because their presence is proof of friendly relations and good opportunities. About 40 per cent of all its employees have been with the Shell organization for more than ten years. You can recognize these long-service people by the Service Award they wear — a gold miniature reproduction of the Shell emblem. After 15 years of service, and at succeeding five-year intervals, a distinctive jeweled emblem is awarded, and at 25 years of service a gold watch is presented.

Laborer Walsh Prevents Injury With Safety Shoe

Laborer Frank Walsh, hired by Shell on September 9, 1955, didn't waste anytime to prove to himself the importance of wearing proper safety equipment. Walsh recently prevented what undoubtedly would have been a serious accident when a heavy jack hammer fell on his right foot. The steel-toed shoes absorbed the blow, and Walsh was uninjured.



FRANK WALSH

Walsh had just finished a job of concrete-breaking with the big jack hammer, which weighs 87 pounds. He set the hammer upright by placing the chisel end in soft dirt, but it slipped, the handle striking him a blow on the right foot, gouging a piece of leather from the safety toe of his shoe.

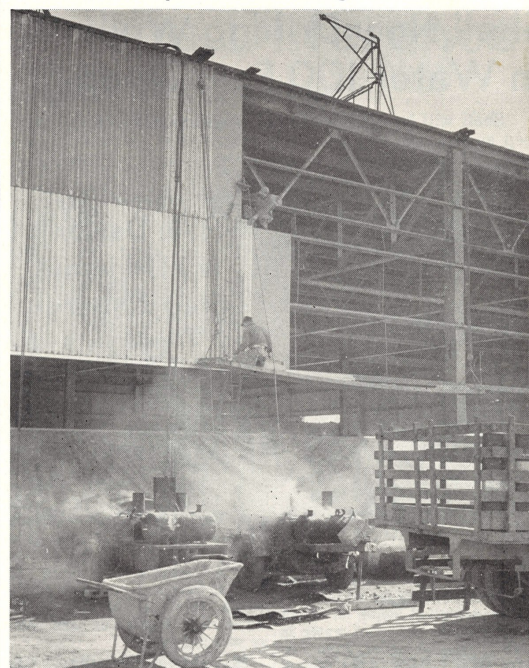
Walsh formerly was employed as an orthopedic technician, working on apparatus to help physically-handicapped people overcome their disadvantages. In this position, Walsh had occasion to make himself a pair of leather boots. When he was hired, he intended to wear the boots for everyday work, but was cautioned against this by a refinery safety representative.

Heeding the advice, Walsh purchased a pair of safety-toed shoes at the Emergency Hospital. Purchasing the shoes paid off in a short time for Frank Walsh.

New York Men Visit Plant

H. W. Egliht, Manager of Shell's Refinery Accounting Department, and Methods and Procedures head J. W. Haslett visited Wood River Refinery this month to review various clerical procedures.

Shop Work Progresses



Corrugated transite sheets are being added to Shops Two as construction work on the new building progresses on schedule. It will correspond in architecture with Shops One, which has been occupied for approximately four months. Shops Two will provide shop and office space for the pipefitter, blacksmith, carpenter, painter, insulator, laborer, and brickmason crafts. Completion of Shops Two is scheduled for Spring of 1956.

Three Games Every Thursday

Seven Teams Register for Plant League Basketball

With seven teams signing up for league competition, the Plant League basketball schedule for 1955-56 promises to be an interesting one. League play was scheduled to get underway on November 17, and the circuit will wind up the season on March 1. All contests will be played at the Roxana Community Center on Thursday evening.

Three games will be played each evening, at 6:30, 7:30 and 8:30.

Dispatching, traditional winner of sporting activities for the past several years, is once again picked as the team to beat. But several of the other teams in the league have bolstered their line-ups, and competition should be much keener than in 1954-55.

Team comprising the league this year include Engineering, Distilling, Research, Control Lab, Laborers, and Treasury.

The schedule:

December 1: 1st game: Research vs. Control Lab. 2nd game: Dispatching vs. Distilling. 3rd game: Treasury vs. Laborers. Engineering bye.

December 8: 1st game: Distilling vs. Control Lab. 2nd game: Laborers vs. Engineering. 3rd game: Research vs. Treasury. Dispatching bye.

December 15: 1st game: Research vs. Laborers. 2nd game: Engineering vs. Control Lab. 3rd game: Dispatching vs. Treasury. Distilling bye.

December 22: 1st game: Control Lab vs. Dispatching. 2nd game: Laborers vs. Distilling. 3rd game: Treasury vs. Engineering. Research bye.

December 29: 1st game: Treasury vs. Distilling. 2nd game: Engineering vs. Research. 3rd game: Laborers vs. Dispatching. Control Lab bye.

January 5: 1st game: Engineering vs. Distilling. 2nd game: Dispatching vs. Research. 3rd game:

Laborers vs. Control Lab. Treasury bye.

January 12: 1st game: Research vs. Distilling. 2nd game: Treasury vs. Control Lab. 3rd game: Engineering vs. Dispatching. Laborers bye.

January 19: 1st game: Treasury vs. Laborers. 2nd game: Distilling vs. Dispatching. 3rd game: Control Lab. vs. Research. Engineering bye.

January 26: 1st game: Treasury vs. Distilling. 2nd game: Engineering vs. Laborers. 3rd game: Control Lab. vs. Distilling. Dispatching bye.

February 2: 1st game: Treasury vs. Dispatching. 2nd game: Engineering vs. Control Lab. 3rd game: Laborers vs. Research. Distilling bye.

February 9: 1st game: Treasury vs. Engineering. 2nd game: Distilling vs. Laborers. 3rd game: Dispatching vs. Control Lab. Research bye.

February 16: 1st game: Dispatching vs. Laborers. 2nd game: Research vs. Engineering. 3rd game: Distilling vs. Treasury. Control Lab bye.

February 23: 1st game: Control Lab vs. Laborers. 2nd game: Research vs. Dispatching. 3rd game: Distilling vs. Engineering. Treasury bye.

Officials: Sparks, Devereux; Maguire. Timekeeper: Welch.

Forfeit time is 15 minutes beyond scheduled starting time for each game.

So-long to Richie!



Mailing and Filing had a going-away party for ex mail boy Richard Martin this month at Skagg's. Richie is on military leave with the U. S. Navy for two years. Presenting a gift to him is Norma Yowell. Back row, left to right, H. E. (Ed) Garner, Chief Accountant, Joanne Enlow, Marion Teachout, Supervisor - Mailing and Filing, Jackie Chappe, and Liz Holliday. Seated and partially hidden is Irene Giannini.

Nine Women are Honored by Shell Service Club

Nine Shell women employees were honored by the Shell Service Club on November 19 in recognition of service anniversaries celebrated with the company during 1955. The annual banquet was held at Skagg's Steak House.

The women and the Service Club officers saw two films and enjoyed dinner music by Al Rezakabek.

Women present include Marion Teachout, 30 years; Louise Paul, 25 years, and the following 10 year employees; Shirley d'Adrian Duval, Jean Gorman, Dorothy Kladar, Dolores Moehle, Gloria White, Lucille Brown, and Virginia Kline.

The banquet marked the final Service dinner of the year, with the exception of the Annual Women's Dinner, which is held every year for all of Wood River's women employees. This dinner will be held December 5 at the Stratford Hotel.

Good Idea



"Junior! Bring that back in the house this minute!"

Head Office Methods Men Visit Refinery

Three men from Head Office Methods and Procedures Department were at Wood River Refinery during October and November, assisting local management in a review of clerical procedures here.

The men working on the efficiency study were W. E. Pitt, T. L. Owen, and E. M. Rogers.

Winners and Judges



FIRST PLACE WINNERS and judges for the SRA-sponsored "Whopper Club" fishing contest are, left to right, W. R. Hester, first place, Bass; Dave Patton, judge; Buck Burmeister, judge; Al Doerr, contest chairman, and Jean Pile, first place, Crappie. Hester's Bass weighed 5 pounds, 1 ounce, and Pile's first-place Crappie tipped the scales at 1 pound, 8½ ounces.

Shell Trucker in Texas Has Driven 1,650,000 Miles

One of Shell's top drivers is J. C. Woods of Odessa, Texas, in the Midland Exploration and Production Area. In 30 years with Shell, he has logged over 1,650,000 miles without a single chargeable accident.

Woods is a truck driver who wheels a heavy-duty big rig over the highways and country roads of West Texas and southeastern New Mexico. He has handled a wide variety of vehicles, ranging from models which are now museum pieces to his present truck, a 1951 model with 150,000 miles on it.

The distance he has logged is equal to more than 66 times around the earth at the equator. A person would have to drive steadily for over three years at 60 miles per hour to travel that distance.

While piling up his mileage under all weather, seasonal and traffic conditions, Woods has made the

Oil Industry Has 'School for Drillers' At Odessa, Texas

The oil industry's first "school of drilling technology," held at the University of Texas, Odessa, has just completed a successful first term.

The curriculum is designed to stimulate job interest among drillers by training them for promotions, and to provide practical drilling data for other personnel. The school's long-range goals are the production of more drilling executives from the ranks and the stabilization of the industry's labor force.

A 41-man teaching staff was supplied by drilling contractors, equipment manufacturers and distributors, and educational institutions. Courses are tailored to the driller's instead of the engineer's level, with more emphasis on field techniques than on theory.

Traffic Cop—Use your noodle, lady! Use your noodle!

Lady—My goodness! Where is it? I've pushed and pulled everything in the car.

Hester and Pile Win Motors

Prizes Awarded in Shell Fishing Contest

W. E. Hester, Stores, and Jean Pile, Dispatching, won first prizes in the Bass and Crappie divisions in the SRA Fishing Contest which ended November 1. Hester took Bass honors with an early-season catch of 5 pounds 1 ounce, and Pile came up with a 1 pound, 8½ ounce Crappie late this fall to nose out John Martin's 1 pound 4½ ounce Crappie which was tops most of the summer.

The winners were presented with outboard motors in honor of their championships. Hester won a 5½ HP outboard, and Pile received a 3 horsepower model.

Rigid Rules

All of the catches were made in an area close to Wood River Refinery since each entrant had to bring his fish within three hours of the time of the catch according to contest rules. All fish had to be taken on a rod and reel, flyrod, or cane pole. No fish traps or seines were allowed.

Taxidermist Jack Beem of the Stores Department will mount the winning fish for Hester and Pile, and the fish will later be on display in the Refinery cafeteria.

Chairman of the contest was Al Doerr. Dave Patton, Buck Burmeister and Doerr served as judges.

Eight Other Winners

Other winners include, Bass—Second Place: B. W. Malone, 4 pounds, 11½ ounces. Third Place: O. W. Bardelmeier, 4 pounds 9¼ ounces. Fourth Place: H. A. Langley, 3 pounds, 14 ounces. Fifth Place: C. C. Mayfield, 2 pounds, 14½ ounces.

Crappie—Second Place: John Martin, 1 pound, 4½ ounces. Third Place: M. A. Sullivan, 1 pound 1¼ ounces. Fourth Place: C. L. Bunting, 15 ounces. Fifth Place: R. P. Skinner, 12½ ounces.

Prizes for the four runner-up positions in each division included

Fishing Family



FISHING CONTEST WINNERS are left to right, front row kneeling, H. A. Langley, fourth place, Bass, and C. L. Bunting, fourth place, Crappie. Back row, left to right, W. R. Hester, first place, Bass; R. P. Skinner, fifth place, Crappie; B. W. Malone, second place, Bass; John Martin, second place, Crappie; C. C. Mayfield, fifth place, Bass, Oscar Bardelmeier, third place, Bass, and Jean Pile, first place, Crappie.

November Service Anniversaries



30 YEARS
R. L. Bledsoe
Cracking



30 YEARS
V. J. Mellor
Lube



30 YEARS
T. R. Rambo
Automotive



30 YEARS
E. L. Starkey
Cracking



30 YEARS
E. W. White
Cracking



25 YEARS
Edwin Clary
Pipe



25 YEARS
C. E. Priest
Lt. Oil



25 YEARS
J. C. Willman
Carpenter

10 Years

E. E. ERNST
Dispatching

D. J. KIRCHOFF
Alkylation

W. H. LAMB
Cracking

R. B. WOHLERT
Lube



20 YEARS
H. W. McCulloch
P. A. D.



20 YEARS
J. W. Ogg
Engineering



20 YEARS
L. P. Parsons
Pipe



20 YEARS
C. E. Provov
Pipe



20 YEARS
C. W. Smith
Pipe



20 YEARS
L. K. Thompson
Inspection

15 Years

R. F. CHEVALLEY
Control Lab

C. O. FOSTER
Compounding

C. A. McDONALD
Compounding

F. A. ORR
Research

F. E. PLANK
Cracking

C. P. SCHILLING
Stores

W. D. SIMS
Research

SPORTS

Premium League Champs



FIRST QUARTER Premium League champs are the Machinists, a new addition to the division this year. Left to right are, back row, Mitchell, Ingersoll, Briskey, and Grabowski. Seated is M. Baker. Other members of the team are Mel Hubach and "Murphy" Murphy. Hubach and Grabowski are pacing the team with respective averages of 175 and 171.

Industrial Bowlers Shoot Record 1066

Schindewolf, Grover, Nagy, Hertel and Patton All Over 200!

Shell's Number One Industrial Bowling Team hit the headlines this month when they bowled the high single for the season this year with a scorching series of 1066 scratch. Led by Ray Schindewolf's 222, all of the members of the team hit 200 games to soundly trounce Godfrey Box on Nov. 17.

Included in this array was Shindy's 222, Jess Grover's 219, Joe Nagy's 213, Dutch Hertel's 208, and Dave Patton's 204. As Patton later remarked, "If you can't hit 200 on this team, you're dragging your feet."

Shell One is currently in third place in the league, with Shell Two now in fifth position. Schindewolf is in fourth place in Individual Average with a mark of 183.

Firecrackers Take Five-Game Lead in Women's Bowling

The Firecrackers, with a crew of veteran bowlers, have increased their lead in the Shell Ladies' Bowling League to 5 games over the Oilerettes, last year's champs. The Crackers now have 25 wins, 11 losses, against the Oilerettes' 20-16.

Tootsie Nash, after a slow start this year, has started to roll once again, and now has her average up to 154, third high in the league. She paces the Crackers, and along with Holtman, Stetson, Nash, Bruns, and Ayres, it looks as if they'll be hard to beat.

Research is in third place with 19-17, followed by the Activators in fourth with 18½-17½.

Ikie Booten still retains her lead for high average with 161. Dotty Kladar is second with 156, followed by Boren and Nash with 154.

The Firecrackers lead the Team High Three division with 2228. Close behind are the Shell Mrs. and the Activators with 2213 and 2119 respectively. The Oilerettes have 828 for the Team High Single. Research is second, 808, and the Shellettes have a 798 for third position.



Ray Schindewolf

The team registered 30 strikes, or an average of 6 per man. They had 20 spares and 3 splits, one of which Patton picked in the fourth frame. Ray Schindewolf, oddly enough the highest bowler of the bunch, had the only miss of the game, that coming in the eighth frame.

And Jess Grover, with a 219 total, probably had the toughest luck of the night. He had two splits, one coming in the 10th frame after six straight strikes. Jess had 211 in the 9th frame, and had he marked in the 10th, would have had a whale of a game. His other split came in the third frame after a strike and a spare. Jess had 7 strikes in the game and Shindy had 8.

Standings Show About-Face This Month in Plant Bowling

Not a Single First-Quarter Winner is In First Place as Second Quarter Progresses

The complexion has changed a bit in the Plant Bowling Leagues after three weeks of activity in the second quarter. In fact, not a single first-quarter winner is holding down a number one position right now. Fire and Safety, which copped the Super Shell first-quarter crown, is closer to first than any of the other winners, as they trail the Control Lab by one game.

Winners of the Premium League first quarter, the Machinists, are currently in a three-way tie for sixth-place, as Industrial Relations, the lowest-averaged team in the circuit, is holding onto a tie with the Extraction Plant. Both teams have 6 wins, 3 losses, after three weeks of bowling.

Over in the X-100 League, the Bulk Depot, first-quarter winners by three games over the Cat Crackers, are tied for third with 4-2. The Cat Crackers meanwhile are tied with the Cracker Box for the second quarter lead with 5 wins against only 1 loss.

Perhaps the most surprising showing to date is in the Golden Shell League, where the Fab Shop, first-quarter winners by three games, are currently tied for last place with only a single victory in six starts. Meanwhile, the Instrument Department, who finished up the initial round near the bottom, is leading the pack with 5 wins, 1 loss.

Premium League

Some top scores have been registered in the Premium League during the first few weeks of activity. The Asphalt Plant and Industrial Relations both had hot nights on November 3, when they registered scores of 1077 and 1074 respectively. Then, on November 10, the Electricians came up with a 1077, and these three teams now comprise the Team High Single division.

Harold Manns has been banging the pins with workman-like authority for the past few weeks, and is climbing in high individual average with a 176. He hit a 613 series on November 10, and registered a 253 game, plus a 204, during the course of the evening. Manns is usually around 170, but looks as if he might be on his way to his best season.

Walt Fiessel with 185, and Ted Madosh with 181 are at the top of the Individual Average standings. Ted had a 619 series November 16 which helped boost his average from 176. A 244 game was the highlight of Ted's evening's work.

X-100 League

The Cat Crackers are out to prove that the fight they gave the Bulk Depot in the first quarter was no fluke. These two teams ran 1-2 for the duration of the first quarter before the Bulk Depot won going away. The Crackers now have 5 wins and 1 loss to tie for first place with the Cracker Box. Meanwhile the Bulk Depot boys are having troubles, and they stand 4-2.

Kenny Zumwalt leads all bowlers in this circuit with an average of 169. He is followed by Skrobol with 168 and Kress and Nash, both of whom have 164. The Bulk Depot has a 3061 to lead in Team High Three, and their 1051 is good enough for second place in Team High Single. The Cracker Box is first in Team High Single with 1102, a fine score which probably won't be topped real soon.

Mellor leads in Individual High Three with 568, followed by Kalivoda with 565 and Skrobol with 562. Roberts' 225 is tops in Individual High Single.

Super Shell

This could be the toughest league of them all—at least the one displaying the keenest competition. The Control Lab, after registering some top scores in the first quarter, is starting to roll now, and they head the pack with 5-1. Fire and Safety, first-quarter winners, have 4-2, as do the Brickmasons. Big Bob Kapp still leads the high average parade with 186. Rau is second with 176, followed by Andrews with 175.

The Research Pilots and the Control Lab head the Team High and Individual High Three divisions with respective scores of 3077 and 1115 respectively. Harold Taul's fine 624 series is 29 pins better than his closest rival for Individual High Three honors. Weule is second with 595, and Gillis has a 591 for third.

Schneider's 276 is tops for the top single game of the year in the league. Bert Strebler's 248 was topped by Schneider only this month. Whitey Harris is close on Strebler's heels with 246.

Golden Shell

The Instrument Department is surprising everyone with their fine showing so far this quarter. They have 5 wins, 1 loss after two weeks of activity. However, it's early, and anything could happen in this league. The Fab Shop, first-quarter champs, might start their surge soon. If they don't there's always the Rollaways and Distilling to reckon with.

Thomsen has a 636 for first place in Individual High Three. Judd is second with 584, and Ferrante has a 570. Tassan's 224 is tops for high single, with Kranz 222, and Hibbard, 220 giving him plenty of competition in this close division.

The Instrument boys have an outstanding 3070 series which puts them almost 50 pins ahead of their nearest rivals in the race for Team High Three. The Research Ramblers' 1048 leads in Team High Single.

Dispatching Open Plant Basketball Season With Win

Plant basketball got underway on November 17 at the Roxana Community Center, with Distilling, Dispatching, and the Control Lab coming up with victories in their first encounters.

Distilling over Research

Joe Pazero had 16 points and Merlin Hubbard 12 to pace the Distillers over Research. Distilling had a 20-12 lead at the half, but Research had a good third quarter, and trailed by only six points, 36-30, going into the fourth quarter. Distilling held the Lab boys in the last quarter, however, and got 16 points themselves. Price and Van Voorhis had eight apiece for Research.

Control Lab Downs Treasury

In the lowest-scoring game of the night, the Control Lab whipped Treasury 30-20. It was a close game all the way, but Treasury couldn't find the spark to add to their scoring. St. Peters had 10 points to lead the Lab boys at the nets, and Roche, Brewer, and Glenn had six each for Treasury.

Dispatching the Victors

Dispatching began their defense of their league title by taking Engineering in a close contest, 45-40. The Dispatchers had a 10-point advantage going into the fourth stanza, but a last-ditch scoring effort by Igo of Engineering almost cost them a victory. Igo had 11 points in the last quarter. Appleby had 17 markers for the night's work. Garner with 16 and Zumwalt with 11 were the top scorers for Dispatching.

Super Shell Leaders



THE CONTROL LAB's Super Shell bowling team is currently in first place in the circuit with a record of 5 wins against only 1 loss. Left to right are, back row, Ed Locke, Lee Rich, John Decker, and Dutch Fors. Seated is team captain Al Doerr. Missing when the picture was taken were team members Taul, Strebler, Grieve, Patch and Combs.