

THE SHELL REVIEW

VOLUME 16— NUMBER 4

WOOD RIVER, ILLINOIS

JULY, 1953

NINETY RETIRED EMPLOYEES ATTEND SERVICE CLUB BARBECUE



Ninety retired Shell employees attended the Service Club Barbecue, Sat., July 25. The group assembled in the pavilion, Edwardsville American Legion Park where picture was taken.

HONOR FOR A FAMOUS FIRST

A Shell Discovery Well Is Commemorated as the First in California to be Discovered by Reflection Seismology

A sign has been erected at the site of Shell's discovery well in the Ten Section field to mark the first wildcat in California to be discovered by reflection seismology.

Actually, the 1936 discovery in the San Joaquin Valley did almost as much for seismology as seismology did for it. The well helped to prove conclusively that structures suitable for holding oil could be located by recording and interpreting the way artificially created shock waves move through the earth and are bounced back to the surface by reflecting layers.

Before Shell drilled the test well, wildcaters in the area concentrated their efforts on the east and west sides of the Valley where surface geology indicated possible oil-bearing formations. They ignored the flat Valley floor because it offered no surface clues at all to the underground structures. However, when seismic work indicated oil possibilities under the valley floor 10 miles southwest of Bakersfield, Shell decided to test the new exploration tool and gamble on a wildcat.

On June 2, 1936, the test well began flowing 744 barrels a day of high gravity oil.

Today, after almost 17 years of continuous production, the Ten Section field still has 112 active wells, producing more than 4,000 barrels of oil a day. Possibly even more important than the field, however, is the role that Shell's Ten Section discovery well played in proving the importance of reflection seismology as a valuable new tool in the search for oil.

Mul-i-Million-Dollar Nest Egg



Since 1938, Shell has contributed more than \$225,000,000 toward employees' retirement security. That's a lot of money, but it takes a lot of money to maintain a liberal retirement program which is rated one of the best.

Last year, for example, on top of every payroll dollar, Shell added another 17 cents to go into the Pension Plan and to match employee contributions to the Provident Fund.

Monthly pension payments to retired employees now total more than \$217,000 and they are increasing all the time. Since the start of the Pension Plan, over \$11,000,000 have been paid out to pensioners.

Furthermore, Shell employees now have more than \$153,000,000 standing to their credit in the Provident Fund and this is after withdrawals which have amounted to more than \$37,000,000.

There is no defeat for those who will not accept defeat. Always the invisible resources spring to the aid of the soul that will not be beaten. The victory wrung out of defeat glows with a luster never seen in any easily won triumphs.—Zelio M. Walters in Good Business.

PERSONNEL MOVES

H. E. Walker, until recently Assistant Manager - Gas Department, has been appointed Assistant Chief Technologist replacing J. B. St. Clair.

J. A. Marshall, Senior Technologist in charge of the Experimental Laboratory, has been named to the position of Assistant Manager of the newly created Aromatics Department.

K. E. Rohr, Senior Technologist, has been named Assistant Manager-Alkylolation Department.

H. F. May has been assigned Head Watchman replacing H. A. Deem who has been transferred to the Utilities Department.

J. F. Shaw, Zone Supervisor - Toluene has been assigned Zone Supervisor for the new Compounding Zone.

R. V. Roberts, Assistant Zone Supervisor - Utilities, has been named Zone Supervisor for the new Aromatics Zone.

A. M. Jackson, Assistant Zone Supervisor Lubricating, will be transferred in the same capacity to the Utilities Zone.

O. G. Gilbert, Assistant Zone Supervisor - Alkylolation has been assigned to Maintenance Shift Supervisor.

Mere money in itself develops no one, but the experience that makes and accumulates money at the same time makes character, and character is always capital.—William O'Gara in Good Business.

J. B. St. Clair Heads New Operating Department



Because of the new facilities being constructed here at Wood River and the resulting enlargement of Operation, a new department is being formed, which will be known as the Aromatics Department. It will consist of the Toluene Plants 1 and 2, the Catalytic Desulfurization Unit, and the Platformer which is now under construction. J. B. St. Clair, until recently Assistant Chief Technologist, has been named the Department Manager.

St. Clair received his B.S. degree in Chemical Engineering from Tulane University in 1940. In the same year he joined the Shell organization at the Houston Refinery as a Junior Technologist. He was transferred to the Head Office Technological Department as Senior Technologist in 1945, and came to Wood River in 1948. In the past five years he has served as Assistant Manager in three Operating Departments - Lubricating Oils, Gas, and Cracking - and in 1952 was named Assistant Chief Technologist.

SERVICE CLUB BARBECUE ATTRACTS RECORD CROWD

The Shell Service Club Barbecue, held on Saturday, July 25 at the Edwardsville American Legion Park, brought out a record number of members. The weather was hot but the breezes were cooling in the shade of the trees at the park. There was plenty of food and drinks, and everyone who attended reported having had a good time.

Ernie Heldman, veteran television performer, gave two short programs of comedy magic, and music was furnished by Al Rezabek's Orchestra. There were numerous recreational facilities available, and attendance prizes were awarded throughout the day. The grand prize - a fully equipped picnic basket - went to O. W. Kirkpatrick, retired.

During the afternoon business meeting nominations were made for candidates for offices in the Shell Service Club for 1954. Nominated for the office of president were Charlie Reichert (now serving as vice president), Ted Groppe, and LeRoy Bierbaum; for vice president, Clark Baker (now serving as secretary); for secretary, L. E. Bethards (now serving as treasurer) Robert Eckman, and Fred King; and for treasurer, Harley Sparks. Charlie Byford, also nominated for the office of vice president, declined.

At 6:00 p.m. a softball game was played between the two Shell Industrial League teams for the entertainment of Service Club members. The Has-Beens were defeated by a score of 5 to 1 (Additional pictures on page 5)

Census figures show that there are more autos than telephones on U. S. farms. Some 29 per cent of all motor trucks and 12 per cent of all passenger cars in this country are on farms. These represent a small percentage of the petroleum powered equipment farmers use to keep Americans supplied with food and other necessities.

SRA FAMILY
BOAT EXCURSION
STEAMER ADMIRAL
August 23

ARMY CITATION FOR WOOD RIVER

HEADQUARTERS FIFTH ARMY



☆ IN RECOGNITION OF ☆

FAITHFUL AND COOPERATIVE SPIRIT IN THE RELEASE OF EMPLOYEES FOR PERFORMANCE OF MILITARY DUTY, THE COMMANDING GENERAL AWARDS

To

SHELL OIL COMPANY

WOOD RIVER, ILLINOIS

This

Certificate of Appreciation

Many of our citizens, veterans and non-veterans alike, are members of the Army Reserve. They assume certain obligations to participate in summer field training and other tours of active duty for training, which require their absence from civilian occupations for brief periods.

It is gratifying to note that your firm is wholeheartedly supporting this reserve program of our Armed Forces, and authorizing military leaves of absence for its employees so that they can participate in such training.

The Army Commander has asked that I convey his personal thanks to you and your company for the invaluable contribution you are making to the defense of our country. Your continued interest will assist materially in strengthening the reserve components of the Army and thus help to maintain our national security.

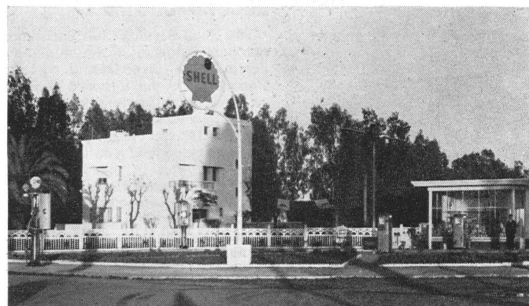
George A. Duerer
GEORGE A. DUERER
Colonel, ARTT

DATE 2 June 1953

SHR 1118
7 FEB 53

ARMY-CCSC-L3-2305

SHELL IN FRENCH MORROCCO



This picture of a Shell Service Station was taken recently in French Morocco by James E. Garde of Edwardsville, now serving with the U. S. Air Force. It was sent to H. H. Maxfield, Products Application Department, through whose courtesy we print it in Shell Review.

The year 1953 marks the twenty-fifth year of operation of Shell Development Company and of its Emeryville Research Center. To commemorate the event, an open house will be held at the Center late in November for employees and their families.

About 33,726,000 gallons of motor oil were sold through car dealer shops, garages, chain stores, etc., in 1952. These outlets plus the 200,000 service stations spread across the United States, compete to keep oil products flowing from oil wells to consumer in ample, economical supply.



Published monthly for the employees of the Shell Oil Company, Wood River Refinery.

FRED LIST Editor

REPORTERS

Operating Departments F. E. Zapf
Engineering Field N. F. Bast
Research Laboratory J. A. Bowman
Main Office R. T. Brown
Sports H. A. Poitz
Safety E. B. Wiley

Address communications to Editor, Shell Review, Box 262, Wood River, Illinois

SHELL SAFETY MEN VISIT WOOD RIVER REFINERY



These Safety Managers from all parts of the United States and Canada visited the Shell Wood River Refinery on Thursday, June 25. From left are: R. A. Randels, Shell Wood River Refinery; G. W. Theelfall, Shellburn Refinery, Vancouver, British Columbia; N.W. Jacobson, Emeryville Laboratories of Shell Development Company, Emeryville, California; J. P. King, Shell Chemical, Pittsburg, California; E. G. Saxon, Shell Chemical, Houston, Texas; B. R. Valls, Shell Chemical, Denver, Colorado; R. C. Mobley, Shell Chemical, Torrance, California; T. L. Jenkins, Montreal Refinery, Quebec, Canada; W. R. Bland, Martinez Refinery, Martinez, California; J. E. Zerher, Sewaren Terminal, Sewaren, New Jersey; F. E. Boyd, Shell Chemical, Martinez, California; G. F. Mayse, Wilmington Refinery in California; H. F. Flint, (in rear) Shell Chemical, Dominguez, California; L. J. Grossheim, Houston Refinery, Texas; R. E. Goff, Head Office Personnel, New York; V. E. Bradley, Norco Refinery, Louisiana; W. N. Young, Head Office Marketing, New York; and M. N. Black, Shell Chemical, Ventura, California. Also with the group but not in the picture were N. G. White, Shell Chemical, Head Office, New York; and J. R. Morrison, Head Office Personnel, New York.

Tips on Touring

FROM CAROL LANE

Highway signs not only provide some of this country's best signs of the times, but also are excellent commentaries on American humor and inherent horse sense.

In her travels across the United States, Carol Lane, who is women's travel director of Shell Oil Company, has "collected" mental mementos and some photographs of highway signs. Some are humorous, informative or provide a few painless words of wisdom. Most states are deeply concerned about highway accidents, but they put across their messages through punning, not preaching. Their sound advice runs a gamut from "Life is like a baseball game. It's how many times you reach home safely that counts" to "Death is a five-letter word. So is speed. Life is a four-letter word. So is slow." Another witty warning goes: "Spring is here. The grass is riz. Here's where last year's driver is." Such signs as "If you lived here, you'd be home now" and "This is God's country, don't drive through it like a heathen" attest to regional pride.

Restaurant signs such as "Steak \$2.50, value 5(W)" and "The best barbecue in the world—or any place" are another source of high way humor. A roadside restaurant in the Eastern United States proudly advertises "Sho' nuff Northern fried chicken." One in the South advises: "If you think eating our steaks is tough, wait until you try paying your check." Cemetery signs offer a grim variety of humor with such signs as "Don't rush. We can wait" or "Slow down. We've been here a long time." Signs in some parts of the west play on the gullibility of Easterners advising them to: "Watch out for buffalo" and "Look out for Indians."

Roadside signs are vivid symbols of American humor and ingenuity.

In Memoriam

J. W. Ellison, retired and formerly Assistant Manager, Thermal Cracking Department, passed away on Thursday, July 23. He had been in failing health for the past several months. At the time of his retirement he had completed 30 years service with Shell. He is survived by his wife, two daughters, and one son.

Other Shell Publications Available For Perusal

If you happen to be interested in what is going on at some other Shell location, be it a refinery, production area, or marketing division, stop in at the Training Building and look over the appropriate Shell publication. An attempt is made to keep an up-to-date collection of all Shell House Organs mailed in to Wood River. They are available at any time at the office of the Editor of the Shell Review.

Shell Newsno+e

In 1952, Shell Oil Company ranked seventh among the oil companies in domestic crude runs to stills and third in net domestic crude oil production.

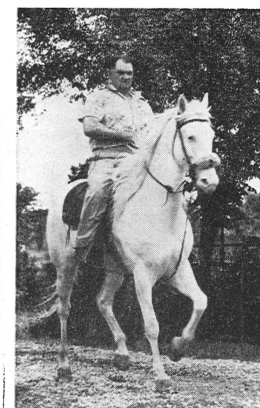
Son of E. L. Kimmel Receives Appointment

Elbert Lee Kimmel, son of E. L. Kimmel, of the Research Laboratory, has received appointment to the U. S. Naval Academy at Annapolis. Young Kimmel is a graduate of the East Alton - Wood River Community High School. He attended the Hilder Preparatory School in Washington, D. C. for one year, and took his entrance examinations several weeks ago. He has now reported to the Academy.

The Kimmels reside at 300 Sotier Place in Wood River.

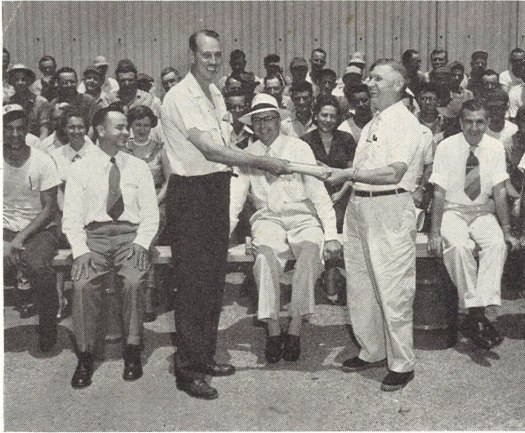
Gasoline and other automotive taxes collected by the Federal Government in 1952 totaled \$2,100,066,269, going over the two billion dollar mark for the first time.

RIDING HORSES — A HOBBY



W. V. (Dusty) Rhodes, Pipefitter, makes a hobby of horse riding, and keeps several horses at his place on Airline Drive in Rosewood Heights. He has been training and exercising horses for the past two years. Rhodes has 3½ acres for pasture. Second from left (above) is 'Prince' his own horse which is five gaited and a hurdler. Also prominent in the above picture is his dog 'Pal'. At left Rhodes is riding 'Flash', a Tennessee Walker.

JULY 1 RETIREMENTS



E. B. Harrison (standing right) is presented a farewell gift by O. W. Bardelmeier on behalf of all the personnel of the Compounding Department. Before his retirement, Harrison had, for many years, been manager of the department. (Editor's note. Harrison, having been ill for the past several months, was unable to see in person, all those with whom he was associated here during his 23 years at Wood River. He therefore, requested that we express for him his appreciation for all the cooperation he received, and his best wishes for those remaining to carry on the job for Shell.)



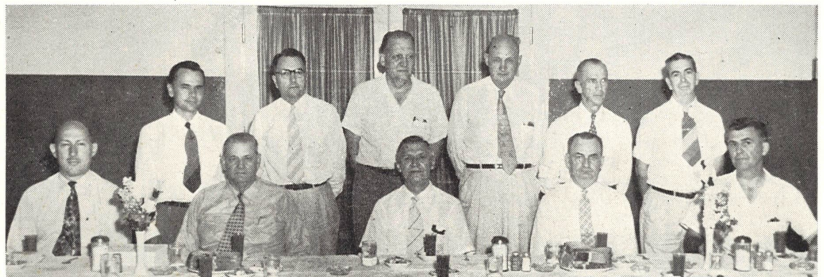
At a recent dinner held at Skaggs Restaurant, Otto Owens (center) was honored on the occasion of his retirement on July 1. Owens was shift Foreman in the Utilities Department. From left are 'Steve' Stimson, 'Slim' Condray, G. N. Andrews, Owens, 'Red' Hall, A. E. Pritchard, and Henry Rethorn.

Shell Creates New Alaska Exploration Division

Shell Oil's Pacific Exploration and Production Area has established an Alaska Exploration Division. The new division, which has its headquarters in Seattle, Washington, will direct the Company's exploration operations in Alaska.

Four surface mapping parties belonging to the new division are already in operation, in southern Alaska. Two are exploring in the Cook Inlet regions southwest of Anchorage while the other two are searching along the coast, east of Anchorage, toward the Canadian border.

Each party includes a party chief, two geologists, a packer, cook and camp assistant. The parties will be in the field for about four months.



The monthly retirement dinner on June 30 honored Otto Owens, E. B. Harrison, and Alex Cremeens (seated). They are flanked by G. N. Andrews, and R. A. Randels. Standing are E. F. Hutchinson, J. M. Wilson, C. C. Hall, G. C. Cunningham, H. A. Deem and J. E. Long.

GETTING THE MOST OUT OF RETIREMENT



One of the good things about Shell's Retirement Program is its flexibility. The benefits are liberal and comprehensive, but they can also be adapted to meet a variety of individual needs. In order to get the most out of them, you should plan well before retirement just how you are going to adapt the several provisions of the program to best meet your requirements and those of your family.

For example, do you want to take your Provident Fund balance in a lump sum? To what extent do you want to provide for your wife after your death? It is not always easy to make the right decisions. But to be on the safe side, here are some of the questions which will confront you when you retire and to which you will have to provide the answers:

Shell Provident Fund

Should I withdraw my balance in a lump sum?

Should I leave all or part of it in the Fund to share in earnings?

If I leave it in the Fund, how should I withdraw the earnings?

Would it be better if I used all or part of my Provident Fund to purchase an annuity to supplement my pension?

What type of supplementary annuity would be best for me and my family?

Shell Pension Plan

What pension option would be best for me and my family? Will I need all my pension income for family needs while I live, or should I accept a reduced amount for myself so as to provide my wife with a pension after my death?

Social Security

What Primary Insurance Benefit will be available to me when I reach age 65?

When I become entitled to receive a Primary Insurance Benefit:

What benefit will be payable to

my wife when she reaches age 65?

What benefit will be payable to her before age 65, if we have a child under 18?

What benefit will be payable to each dependent child under 18?

In the event of my death:

What benefit will then be payable to my wife when she reaches age 65?

What benefit will be payable to her before age 65, if I left in her care a child under 18?

What benefit will be payable to each dependent child under 18?

Post-Retirement Insurance

Do I want my beneficiary to receive my life insurance in a lump sum or should I provide that it be paid in monthly installments?

New Shell Water Flooding Project

Shell Oil Company has started a pilot water-flooding project in its Coalinga Eastside field in California. If the test flood proves successful, the Company plans to flood the entire field to increase its crude oil recovery.

In the trial flood, four water-inject wells are being drilled around an old producing well not far from the old boom town of Oilfields. Brackish water unfit for agricultural or domestic use in its natural state, is drawn from a source three miles away and then is filtered and treated chemically before being injected.

More than one thousand wells have been drilled in the 8500-acre field since its discovery in 1899. The new project, if successful, will add considerably to the more than 287 million barrels recovered from the field to date.

It is seldom that a man fails because he has not the ability to succeed. Usually failure comes because he uses too small a percentage of his actual power. —Good Business.

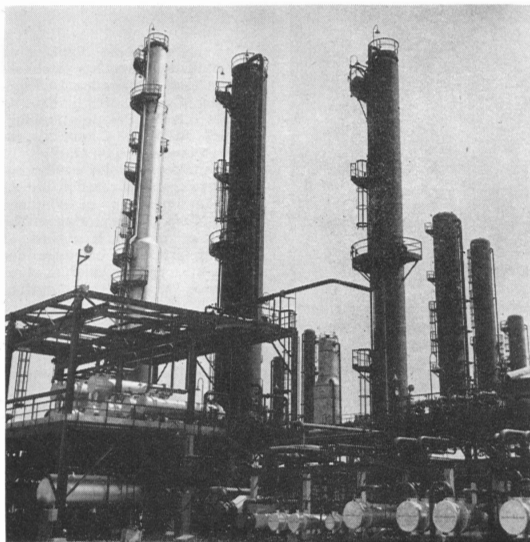
Shell sales have climbed steadily during the last five years. The company and its subsidiaries sold 169 million barrels of refined products in 1952, for example, up nearly 45 million barrels over 1948. Chemical products sales more than doubled in the same period to reach 617,000 tons last year, while natural gas rose two and a half times to 176,613 million cubic feet.

30 YEAR MEN HONORED

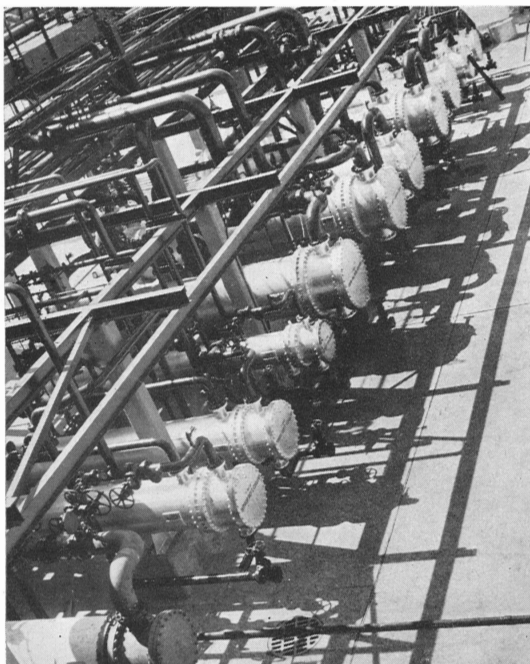


Thirty year men for June were honored with a dinner in the cafeteria along with their supervisors, and representatives of Management, (in upper picture) Proceeding from left and going around table are: G. N. Andrews, C. C. Little, L. J. Forsting (30 years), H. D. Dale, Helen Ebelage (30 years), A. Collins, J. A. Eilenberger (30 years), J. Vasey, E. C. Schwalb, L. L. Sarchett, E. A. Rintoul (30 years), and George Humphries. Lower picture is of July dinner. From left and proceeding around the table are: J. F. Longshore, (30 years), L. A. Lohman, R. Riner, (30 years), C. E. Hightower, J. C. Emery, (30 years), L. L. Sarchett, W. S. Schneider, A. Collins, J. E. Brewer, L. E. Grosh, (30 years), and C. A. Bearden.

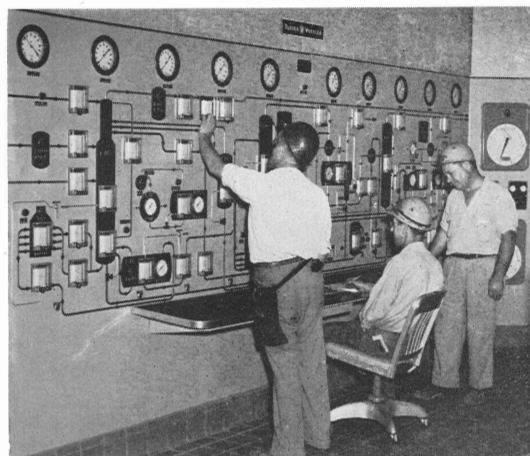
Rectified Absorber Goes Into Operation



This view shows the three columns of the Rectified Absorber. From left are: the Absorber Deethanizer, the Debutanizer, and the Depropanizer columns. The condenser structure is in the left foreground. In the background are columns of other Gas Department units.

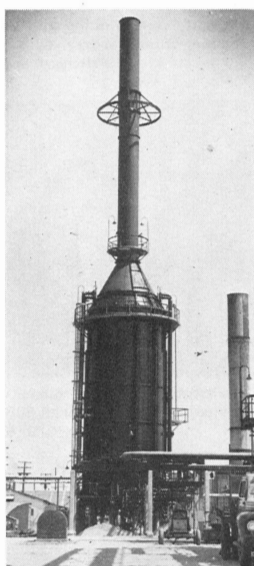


A row of exchangers at ground level at the new Rectified Absorber.

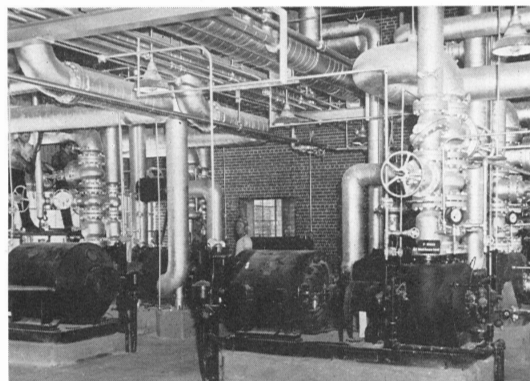


This is the Graphic Control Panel of the Rectified Absorber. From left are: W. E. Ayers, Instrument Man; W. M. Schumacher, Operator; and N. J. Mitchell, Shift Foreman.

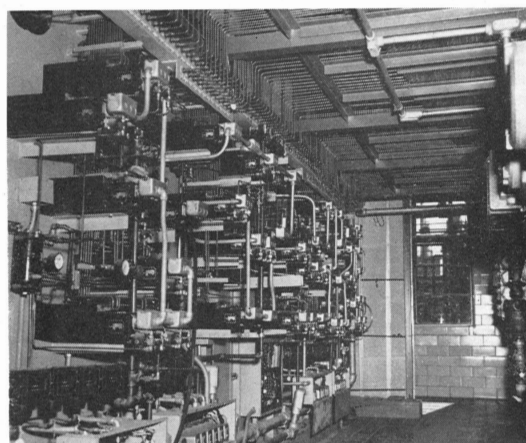
Here are some pictures of the Gas Department's new Rectified Absorber. This is the first phase of the Refinery's expansion program to be completed and to go into operation. The new absorption process is a result of intensive Shell research, and the plant embraces the latest in design features. It is located just west of the Gas plant area, and on the site of the old Dubbs plants 9-12 of the Thermal Cracking Department.



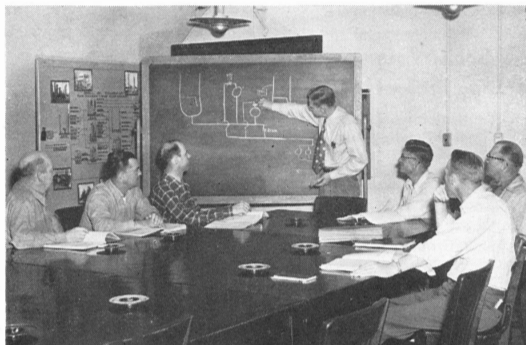
A new vertical type furnace is used to supply heat for the absorber deethanizer column. It is the first of its kind to be put into operation at Wood River.



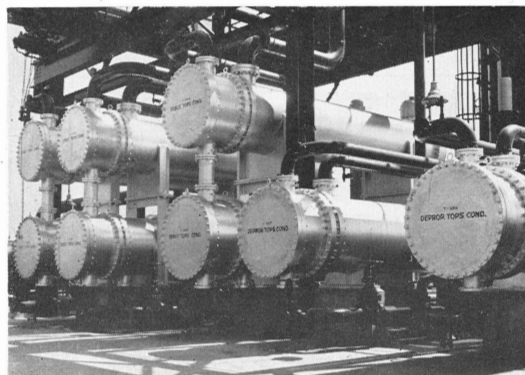
The reboil pump room, just north of the control room, has six centrifugal pumps for circulating through the furnaces.



Here is a rear view of the graphic panel showing intricate piping layout which is necessary for air pressure instruments. No hydrocarbons enter the control room. All instrument impulses are transmitted to the board by pneumatic transmitters.



Training sessions for Rectified Absorber Operators and Shift Foremen were held prior to the actual "bring up" of the unit. From left are D. C. McLain, G. E. Powell, and W. H. Bunse, Operators; C. J. Cech, Technologist, who conducted the class sessions; E. Whiting, Shift Breaker; R. C. Niepert, Operator; and Merle Hall, Shift Foreman.



Condensers on second floor structure at the new Rectified Absorber.

Can You Answer These?

Test yourself on these additional points about your retirement security. Then check your answers in your copy of Program for Security. The page numbers are listed with each question.

1. Do I contribute to the Pension Plan? (Page 21)
2. What part of the Provident Fund do I pay for? (Page 13)
3. What happens to the money in the Provident Fund? (Page 14)

Births

A baby girl, Naomi May, was born on June 12 to the Wayne W. Bradshaw of Valleyview Drive, Alton. Bradshaw is assigned to the Machinists.

Ed Wargo is the proud father of a son, Frank Richard, born on June 15. Wargo is working at the Lube Filter Plant.

A boy, Patrick Russell, was born on June 23 to Mr. and Mrs. D. J. Gibbons. Gibbons is assigned to the Gas Department.

Alice June was born on June 24 to Mr. and Mrs. A. L. Coalson. Coalson is in the Cracking Department.

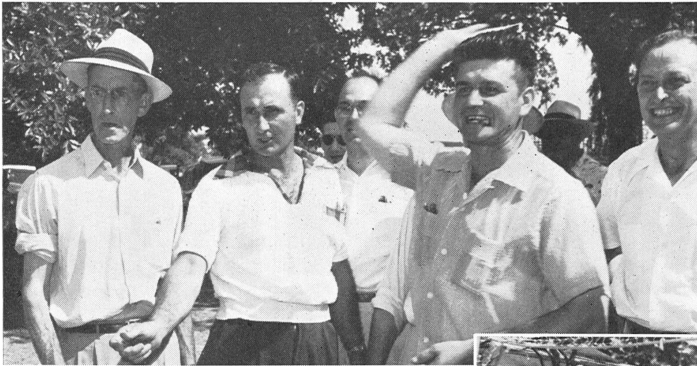
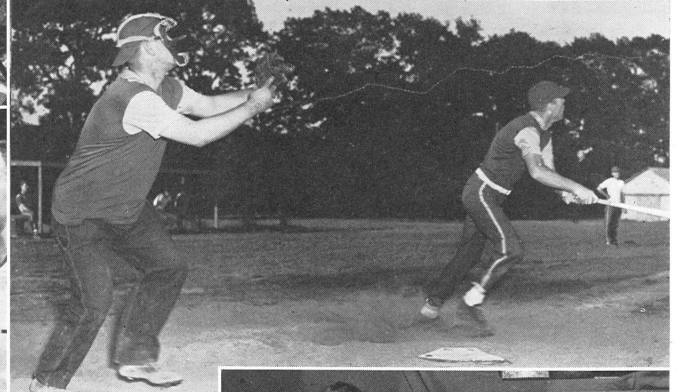
A boy, Ralph Dennis, was born on June 25 to Mr. and Mrs. Charles E. Nisinger. Nisinger is assigned to the Stores Department.

Martin Povich is the proud father of a new baby boy, Gregory Martin, born on July 1. Povich is assigned to the Machinists.

A son, Gary Lee, was born on July 6 to the M. G. Wigger family. Wigger is assigned to the Pipefitters.

A daughter, Marcia Lynn, was born on July 12 to Mr. and Mrs. Kenneth J. Dart. Dart is in the Gas Department.

SCENES FROM SERVICE CLUB BARBECUE



SERVICE ANNIVERSARIES

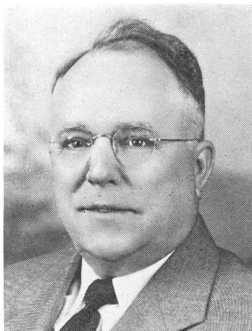
THIRTY YEARS



P. E. Condray, Operations



J. C. Emery, Engineering Field



L. E. Grosh, Stores



J. F. Longshore, Engineering Field

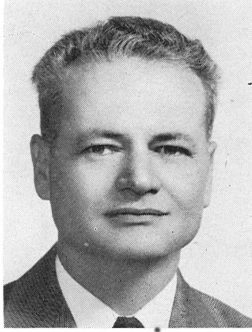
"WATER WINGS" FOR SAILORS

Coveralls made of neoprene-coated nylon, a substance which contains petrochemicals, soon may be standard equipment for all submarines to protect personnel. Should they be swept overboard into churning seas, sailors can inflate their "water wings" by pulling a cord that releases carbon dioxide into the life vest. Nylon and synthetic rubber are representative of the myriad products made with petroleum-derived chemicals to aid our armed forces and to contribute to civilian comfort and convenience.

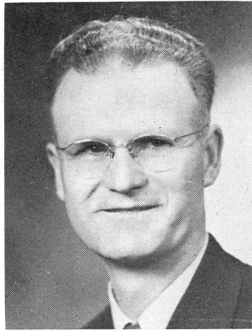
TWENTY-FIVE YEARS



L. E. Barton, Engineering Field



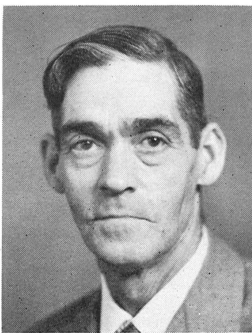
R. B. Boyd, Operations



C. W. Grafford, Operations



W. L. Hartsock, Engineering Field



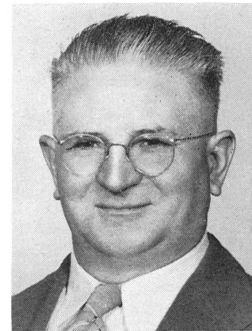
S. A. Hunt, Engineering Field



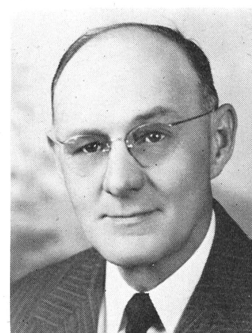
C. McReynolds, Engineering Field



G. F. Watts, Engineering Field



G. P. Wills, Operations

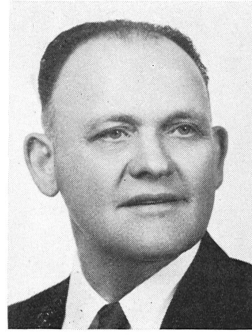


E. W. Zitzman, Engineering Field

TEN YEARS

D. M. Coburn, Engineering Office.
J. J. Dallas, Operations.
E. J. Duerr, Engineering Field.
J. W. Fallon, Engineering Office.
D. L. James, Operations.
T. F. Leeds, Operations.
R. J. Mellies, Technological.
M. A. Middlecoff, Treasury.
H. M. Smith, Engineering Field.
E. L. Sparks, Engineering Field.
R. J. Stoddard, Operations.
R. Wright, Engineering Field.

TWENTY YEARS



W. M. Arth, Engr. Fld.



A. J. Beanblossom, Engr. Fid.



C. B. Beck, Engr. Fid.



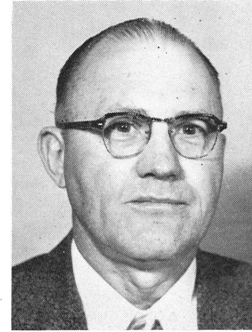
B. W. DeLong, Research Lab.



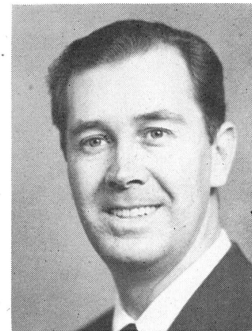
O. L. Drennan, Operations



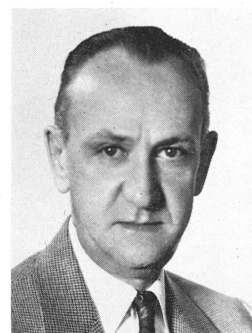
E. H. Fiegenbaum, Operations



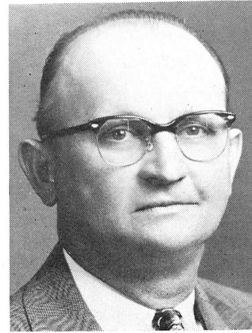
M. L. Hall, Operations



W. E. Helmantoler, Operations



R. W. Hotto, Pers. & Indus. Rel.



J. Kurant, Engineering Field

TWENTY YEARS (Continued)



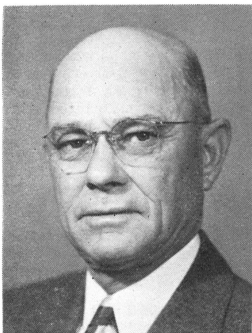
A. W. Pardieck, Engineering Field



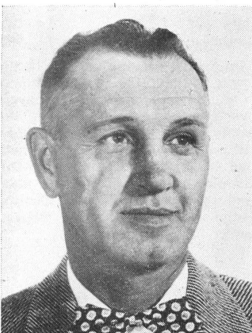
C. H. Puckett, Engineering Field



W. F. Wiegand, Operations

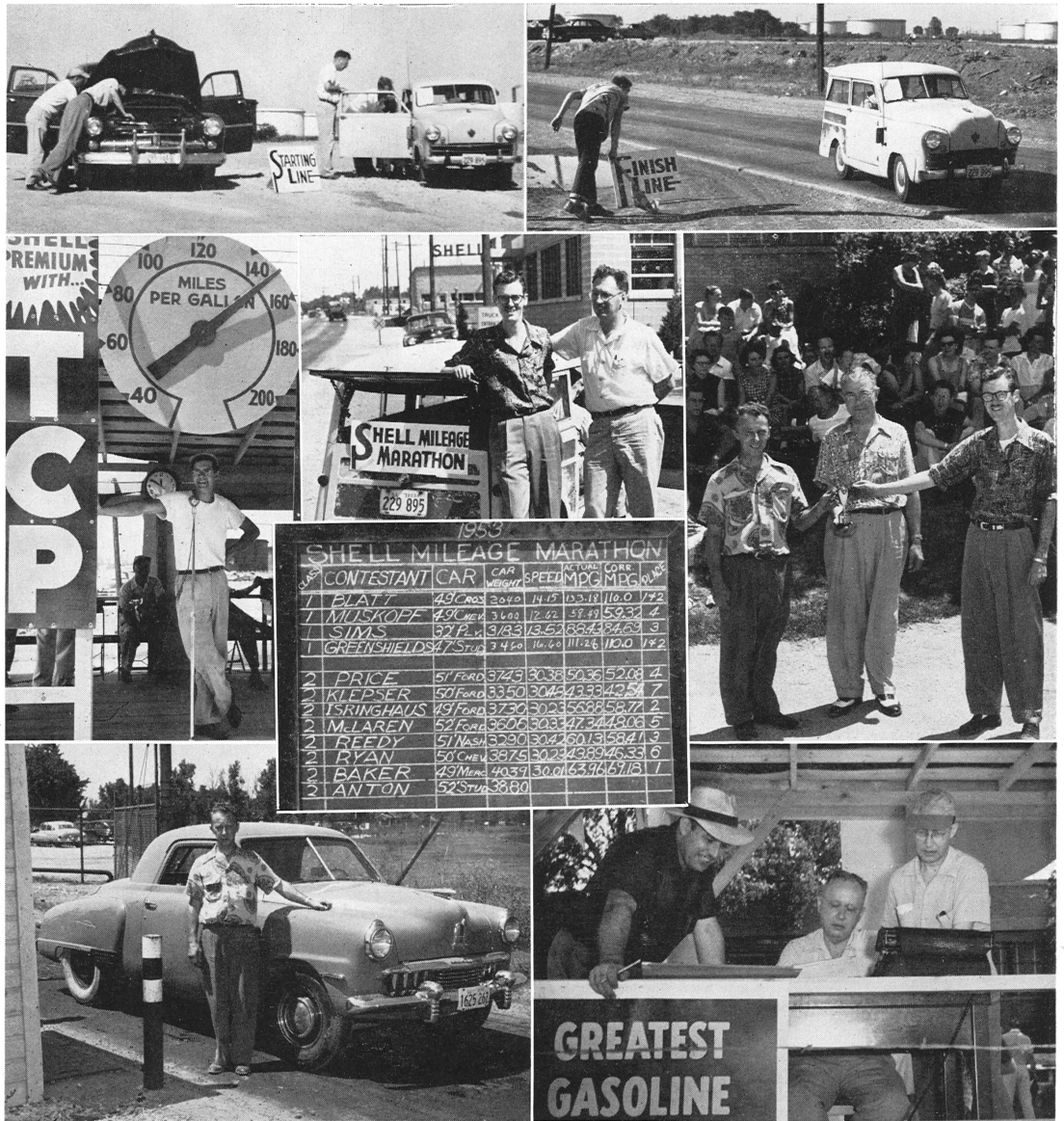


F. E. Williams, Engineering Field



J. M. Witherow, Engineering Field

SCENES FROM RESEARCH LAB'S MILEAGE MARATHON



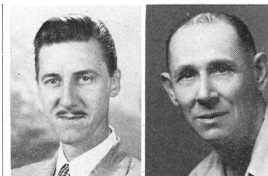
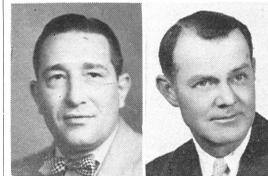
1953 SHELL MILEAGE MARATHON

CONTESTANT	CAR	CAR WEIGHT	SPEED	ACTUAL CORR. MPG	MPG
1. BLATT	49 Chev	3040	14.15	13.18	110.0
1. MILSKOFF	49 Chev	3600	12.62	58.49	59.32
1. SIMS	52 Ford	3183	13.53	58.44	54.73
1. GREENSHIELDS	47 Chev	2460	16.60	111.26	110.0
2. PRICE	51 Ford	3749	30.38	50.36	52.08
2. KLEPSE	50 Ford	3350	30.44	49.33	43.54
2. ISRINGHAUS	49 Ford	3730	30.23	56.88	58.72
2. McLAREN	52 Ford	3606	30.33	47.34	48.08
2. REEDY	51 Nash	3290	30.47	60.13	58.41
2. RYAN	50 Chev	3875	30.22	48.89	46.33
2. BAKER	49 Chev	4039	30.01	53.96	61.18
2. ANTON	52 Chev	3880			

FIFTEEN YEARS



C. H. Marcus, Engineering Field

C. R. Benefiel, Jr.
Control Lab.E. Bradley
OperationsL. W. Morgan
Experiment. Lab.E. N. Piazzi
Engineering Fid.A. J. Wood
OperationsF. H. Burroughs
Engineering Fid.C. H. Denny
Per. & Ind.R. Schoeneweis
OperationsB. R. Shannon
Engineering Fid.

Golf Tournament

The annual Shell Golf Tournament will begin on the week of August 24. Entry blanks will be sent to all team captains, and additional copies will be available from Ed Wiley, Gas Department.

Blanks must be turned in by August 17 to Wiley who is secretary of the league.

S.R.A. Calender for August - 1953

Industrial Baseball—6:00 p.m. Aug. 6, Onized; Aug. 13, Western.
Mondays—Every Week—Duplicate Bridge—Cafeteria, 7:30 p.m.
Plant Softball at Kendall Hill—6:00 and 8:00 p.m. Tue., Wed., Thurs.
Wednesday and Thursday—Industrial Golf at Muny Course.
Tuesday and Thursday at 6:00 p.m.—Work nights at Kendall Hill—
Watch the S.R.A. bulletin board for details.
Sunday, Aug. 23—SRA Family Boat Excursion.

R. F. Little
OperationL. E. McGrew
Engineering Fid.

G. E. McCoy, Operations

SCENES FROM ENGINEERING DEPT. PICNIC AT HIGHLAND



Each year the oil industry spends \$100,000,000 in research and employs nearly 20,000 trained chemists and researchers. Each day, on the average, they discover 21 new products or new uses for old products — all "made from oil."

S. R. A. Family Boat Excursion Sunday, Aug. 23

A mid-day boat excursion on the steamer Admiral will be sponsored by the S.R.A. on Sunday, August 23. The boat leaves the St. Louis dock at 10:00 A. M. and returns at 4:00 P. M. Tickets are now on sale at the main gate from Watchman Jack Harris, at the Personnel and Industrial Relations Department from Oscar Kleinert, and at the Research Laboratory from Lonnie Bowman. For children under 12 the price is 30¢. Reduced price for SRA members is 80¢.

In 1945, the oil industry supplied United States consumers with a then record 4% million barrels of petroleum products a day. Because of its swift post-war expansion, the industry is now able to provide close to 8 million barrels a day to satisfy the nation's petroleum requirements.

Industrial Softball

The Shell team defeated Box Board in a first round playoff to win the first half. In the second half of the schedule they have a record of 2 wins and 2 losses.

Shell defeated Westerner 9-0, and defeated Godfrey Bex, but lost to Sinclair and Oni.zed No. 1.

SCENES FROM MAIN OFFICE PICNIC AT HIGHLAND

**Not-So-Good Softball**

At the end of eight games, the Shell Has Beens had six wins and two losses. The losses came at the hands of Onized No. 1 and No. 2. The Has Beens have three games to go, and the league play ends on August 10.

Kids Softball

The softball league for Shell "Kids" has been moving along with very enthusiastic participation.

Currently the Lions are leading the league. Standings are:

	Won	Lost
Lions	4	0
Rams	2	2
Colts	1	3
Panthers	1	3

On Friday evening, August 14, the league champs (the Lions) will play an all star team made up of players from the three other teams of the league - the Colts, the Panthers, and the Rams. The game is scheduled for 8:15 p.m. at the Kendall Hill diamond. The Lions are managed by Freddy Williams, Cooling Water Section, Utilities Department.

Did You Know?

That the Disability Benefit Program is paid for entirely by Shell?