



# REVIEW

Wood River, Illinois

Vol. 28 No. 1 January, 1965

## Hogge Predicts Busy Year at Wood River



Refinery Manager A. C. Hogge

## Refinery Expansion Result Of Sales Volume Increase

Keeping the supply of Shell's petroleum products in line with the public's growing demand for them currently finds the Company engaged in the largest refinery expansion program in its history.

The construction projects involve spending more than \$125 million at the Norco and Martinez Refineries to boost Shell's refinery capacity by some 70,000 barrels a day when the work is completed in mid-1966. The scope of the expansion program includes virtually a new refinery at Martinez that will increase daily capacity there by 56 per cent to 86,000 barrels a day. The extensive improvements under way at Norco are designed to raise crude distilling there by 34 per cent to 156,000 barrels a day.

### Refineries at Capacity

The major reason for the expansion program at this time is that Shell's eight refineries are running at full capacity to enable the Company to keep abreast of the dramatic increases in the sale of its refined products. The sales volume of Shell automotive gasoline, for example, has increased more than 40 per cent in the past four years. Its share of the total market has skyrocketed more than 1.5 percentage points - - from six to 7.5 per cent.

One and a half percentage points may not seem like "skyrocketing" unless one takes into consideration that an increase

of just one per cent in the share of the market equals a refinery throughput of about 90,000 barrels a day. And 90,000 barrels a day about equals the capacity of Shell's Wilmington Refinery!

Another way of illustrating the jump in Shell's sales volume of automotive gasoline is to remember that, since 1960, Shell has advanced from the nation's sixth largest gasoline marketer to probably the third largest - - based on preliminary 1964 estimates. This rate of growth is expected to continue.

The following regional figures show where the growth is taking place:

Western: An increase in automotive gasoline sales from 55,000 barrels a day in 1955 to about 100,000 in mid-1964. Estimates range as high as 155,000 barrels a day by 1970.

Central: An increase from 75,000 barrels a day in 1955 to 105,000 in mid-1964. Demands as high as 190,000 barrels a day by 1970 are forecast.

Eastern and Southern: An increase from 85,000 barrels a day in 1955 to 130,000 by mid-1964. Estimates for 1970 range as high as 190,000 barrels a day.

As these examples illustrate, it is apparent that the Company would have faced serious product shortages had not refinery expansion been undertaken. The full story of Shell's refinery expansion to meet increased de-

(Continued on Page 4)

"Wood River Refinery will be called upon to play a role of more importance in the continuing growth of Shell Oil Company in 1965, and the years that follow," according to a first-of-the-year forecast of things to come by departing Refinery Manager A. C. Hogge.

"On a nation-wide basis, Shell is rapidly expanding its manufacturing facilities in order to continue to share in the ever enlarging market for petroleum products. Wood River's position in the Company's long range planning is the result of the Refinery's geographic location in a rapidly growing marketing area," the Refinery Manager continued.

"Late last year, a multi-million dollar capital expenditure for the construction of two new process units at Wood River was authorized. As we all know, that construction program now is well under way. We can expect building activity to increase in tempo over the next few months, and for the new alkylation plant and catalytic cracker feed hydrotreater to be brought on stream near the end of the year.

"Our new units are being built to enable us to manufacture a greater volume of high quality products more efficiently, as the Company continues its study of all operations and makes the changes necessary to strengthen the organization's competitive position in the petroleum products market.

"A number of such changes to improve operating efficiency were made at Wood River in 1964, and construction was a major activity last year. Modification of the Refinery's two Catalytic Cracking units was a program of major proportions when considering the size of the equipment installed. The new CO furnaces are designed to re-

(Continued on Page 2)

## Lorenz Is Named Hogge Successor

Wood River Refinery Manager A. C. Hogge has been appointed General Manager - - Technical Departments in the Company's Head Office in New York. Announcement of Hogge's transfer was made last month by M. P. L. Love, Shell's Vice President - - Manufacturing.

Hogge will be succeeded at Wood River by G. A. Lorenz, who presently is serving as Manager of Shell's Wilmington-Dominguez, Calif., Refinery. The transfer will be effective February 1, 1965, Love said.

A graduate of Rice University with a bachelor's degree in chemical engineering, Hogge began his Shell career in 1936 in the Norco Refinery Laboratory. After service in various positions at Norco, Houston and New York, he was appointed Chemist-in-Charge of the Experimental Laboratory at Wood River in 1944.

He was named Chief Research Chemist at the Houston Refinery the following year, and Research Director there in 1947. He returned to Wood River in 1953 as Chief Technologist, and became Process Superintendent in 1955. He joined Shell Oil Company of Canada, Limited, in 1956 as Assistant Manager of the Montreal Refinery, and became Manager of the Shellburn Refinery in 1960. He returned to Montreal in early 1962 as Refinery Manager, and came to Wood River for the third time in his Shell career September 1, 1963, as Refinery Manager.



G. A. Lorenz

Lorenz began his Shell career at Wood River in 1935, after receiving a doctor's degree in chemical engineering from the University of Minnesota. While at Wood River, he served in the Refinery Laboratory, Research Laboratory, Technological, Alkylation and Cracking Departments, and in 1946 was named Manager Gas Department.

He was holding that position at the time he was transferred to Head Office as a Senior Technologist in January, 1947. The following year he accepted employment at The Hague, and on his return in 1949 became Assistant Superintendent - -

(Continued on Page 2)

## Safety Slogan Contest to Feature Radios as Prizes

A Wood River Refinery safety slogan for 1965 will be selected in a contest open to all Refinery employees and members of their families, according to plans announced early this month by the Fire and Safety Department which will sponsor and judge the activity.

The winning slogan will be used throughout the year on Refinery signs and posters. The author of the winning entry will be rewarded with a Zenith Royal AM-FM table model radio. Second and third prizes will be a Zenith clock radio and a Zenith personal-size transistor radio, respectively.

The Fire and Safety Department is looking for a "catchy" slogan that is meaningful and rolls off the tongue easily, such as the currently popular "Stay

Alive in '65." The Wood River Refinery slogan does not have to rhyme, the judges state.

There is no limit to the number of entries that can be turned in by an employee, since family members also are invited to participate. The contest ends February 28, and entries may be turned in at any time prior to and including that date.

Entry blanks are available at the Refinery's Main, South and North Gates, and completed entries are to be placed in contest boxes at those gates or turned in to the Fire and Safety Department office. For the convenience of SHELL REVIEW readers, a contest entry blank is reproduced on page four which may be clipped for use in the contest.

## Shell HSM Program Changes Announced

When was the last time you reviewed your coverage under the Shell Hospital Surgical Medical Program? Right now is the ideal time to spend a few minutes on this matter in behalf of yourself and your family, and here are the reasons why:

First, HSM Program members may increase or decrease their present hospital room and board coverage during the resolicitation period, January 18 through 31. Additional hospital room and board options of \$28, \$32 or \$36 a day now are available for Program members or their dependents who become hospitalized on or after February 1, 1965.

These increased options will bring HSM Program coverage more in line with some current hospital charges for accommodations. The options you select will remain in effect until another resolicitation period is announced.

Second, all eligible active Shell employees not presently members of the Shell HSM Pro-

gram may enroll in the Combined Plan between January 18 and the end of the month - - without furnishing evidence of insurability for themselves or their dependents.

Third, those active Shell employees who have restricted their membership to the Basic Plan may enroll for Combined Plan coverage during the resolicitation period - - also without furnishing evidence of employee or dependents' insurability. (The Company urges those who are only in the Basic Plan to consider the liberal benefits available by enrolling in the Combined Plan.)

All three of these points were

(Continued on Page 2)

IPI Premiums Waived

(See story on page 4)

## Hogge Predicts Busy Year at Wood River

(Continued From Page 1)

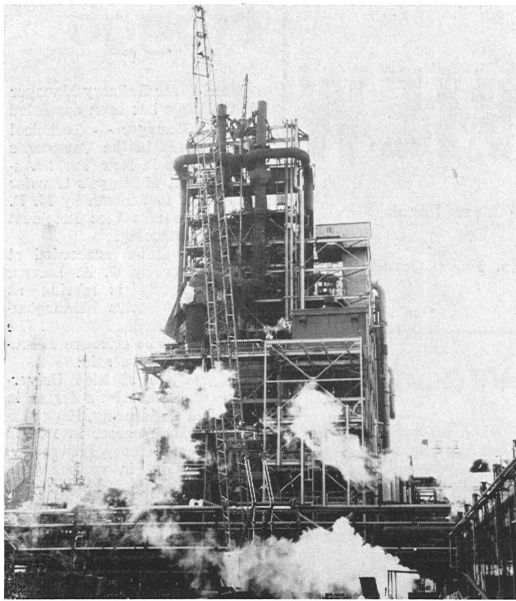
duce Refinery utility costs through the recovery of energy from what previously were waste gases from the Cat Crackers.

"Another construction program involved the new lubricating oils blending and loading facility erected during the year beside the Compound House on Main Office Road. That facility will provide for more efficient handling and blending of special lube oil products requested by customers.

### Lube Oils Improvements

"As the year ended, extensive revisions and improvements to our lubricating oil manufacturing facilities were being completed. These changes will result not only in lower operating costs, but will increase substantially the daily production of high grade lubricating oils.

"Still another plant change in 1964 was installation of the new electronic in-line asphalt blenders last summer in the Lubricating Oils Department. These blenders provided Shell customers a more complete line of asphalt products, some of them previously not readily available at Wood River Refinery because of tankage limitations.



**CAT CRACKER SHUTDOWNS** were more complex in 1964, involving the final stages of construction and installation of new CO furnaces to utilize what previously were Cat Cracker waste gases. In the above scene, a giant crane is at work beside Cat Cracker No. 2 during the shutdown of that unit early this winter. A CO furnace for Cat Cracker No. 1 was installed during the spring.

"In 1965 and following years, Wood River Research personnel also will be called upon to play a leading role in a new Shell marketing venture - the Motorlab\*. Technical, automotive know-how of our Research Laboratory personnel contributed to a decision by Shell to build a prototype at Wood River of the new Motorlabs planned in metropolitan areas across the country.

### Compiling Data Now

"Research personnel now are studying Motorlab operations and are compiling data necessary to provide a new and unique service to owners of the many makes and models of automobiles. And in the future, new developments in the field of automotive service and repair equipment will be tested

and evaluated for these new centers. Many of the personnel who will operate the Motorlabs' diagnostic sections will be trained at Wood River.

"Shell's entrance into the automotive service center field was made in response to a nation-wide customer demand for accurate, reliable, economical and convenient auto maintenance, and work done at Wood River will contribute to the success of this new venture.

"In summing up, you can see 1965 will be a busy year for Wood River Refinery and its employees. We've done a good job in the past, and the Company depends upon us to continue to do so in the future. I can assure you that continued high performance will lead to greater growth in the years ahead."

\* - Trademark.



**ADJUSTING CONTROLS** on the console of the new asphalt blender in the Lubricating Oils Department is Operator 1st Adolph W. Borgini. The new equipment blends materials as they or being loaded in railroad tank cars or trucks.

## Experimental Lab to Close; Lewis Transfers to Houston

Dr. R. W. Lewis, Manager Experimental Laboratory, will be transferred to the Houston Research Laboratory February 1, as Assistant Chief Chemist, according to an announcement by Refinery Manager A. C. Hogge.



Lewis

Lewis' move and others are the result of discontinuing Experimental Laboratory operations on that date in a realignment of manufacturing research activities.

Lewis began work for Shell in 1943 in Wood River Research

Laboratory, after receiving his doctor's degree from Indiana University. After 12 years of service in various research capacities, he was named Manager Experimental Laboratory in 1955.

In other Experimental Laboratory Staff personnel moves, J. J. Leonard, Engineer, will be transferred to Houston Research as a Research Engineer, also effective February 1.

B. J. Barnett, Group Leader, was transferred to the Distilling Department January 1, as a Senior Engineer. A. V. Reznack, Engineer, Distilling Department, was assigned to the Projects Section of Engineering Office as a Project Engineer.

## Lorenz Succeeds Hogge

(Continued from Page 1)

Operations at Wilmington-Dominguez. He joined Shell of Canada, Limited, in 1955, as Assistant Manager of the Montreal Refinery and the following year was named Manager of the Shellburn Refinery. He be-

came Manager of the Montreal Refinery in 1960, and in 1961, was appointed Director of Supply and Trading Administration of Compania Shell de Venezuela. He returned to the United States early in 1964 as Manager of the Wilmington Refinery.

## Shell HSM Program Changes Announced

(Continued from Page 1)

detailed in the announcement you recently received regarding the Shell HSM Program.

This announcement also noted that, effective February 1, 1965, HSM Program premiums for all members will increase. The premium increases will amount to 50 cents a month for Employee Only coverage and \$2 a month for Employee and Dependents' coverage. A schedule of new monthly HSM Program premiums, by room option, is attached to the announcement.

The reason for the premium increases was a substantial deficit in the Shell HSM Program in 1964. Costs exceeded premiums. Also, a projected experience study indicated a further



**Q: As 1965 begins, what role is the petroleum industry - - and Shell - - playing in the nation's economy?**

**A.:** Oil and gas are providing 74 per cent of the nation's domestic energy requirements. And, in 1964, the demand for liquid petroleum continued to improve relative to 1963. For the first nine months of last year, demand for the industry's energy products was three per cent higher than the first nine months of 1963.

In 1964, gasoline continued to be the industry's star performer. Demand rose about four per cent in the first nine months, representing an increase of more than 2.5 billion gallons for the year.

**What of the industry's future?**

It has been estimated that in the year 2,000 the petroleum industry may still supply half of all the energy in the United States. More importantly, however, the demand for oil and natural gas is expected to be consider-

ably more than double current rates.

**Where does Shell fit into all of this?** In terms of sales, Shell is the 15th largest manufacturing corporation in the U. S. - - 13th largest in terms of net income. The Company is the fifth largest producer of domestic crude oil. Its gross crude oil production accounts for 5.5 per cent of the total U. S. production. On the basis of preliminary 1964 results, it is the third largest domestic marketer of refined petroleum products with about 7.5 per cent of the total.

On the chemical side of the industry, sales of \$257 million in 1963 are expected to be significantly higher when 1964's results are tabulated.

Behind the percentages and predictions is the human side of the petroleum industry. Oil and gas companies provide employment for 500,000 Americans, including 50,000 engineers and scientists. And another 500,000 persons are employed in service stations throughout the nation.

Shell's 32,000 employees, and the 24,000 Shell dealers, realize that they, as participants in an industry marked for growth, are beginning 1965 with outstanding opportunities for those who respond to the challenges facing the Company and the industry.

## Wilwerding Transferred; Other Personnel Changes

J. S. Wilwerding, Chief Accountant of Wood River Refinery's Treasury Department since May, 1963, has been named Manager Treasury at Anacortes Refinery. He was succeeded here January 1 by H. W. Platt who came to Wood River from Information and Computer Services in Houston.

Wilwerding came to Wood River from the Head Office Auditing Staff. He previously had served in the Head Office Manufacturing and Transportation Accounting Department, the Seattle Marketing Division and at Anacortes.

Platt began his Shell career with the Los Angeles Division and also has served Shell in the Head Office Marketing Accounting Department and as a Head Office Auditor.

In other recently announced personnel moves, R. D. Thayer, Technological Department, is being transferred to the Head Office Manufacturing Technological Department as an Engineer, effective February 1.

H. H. Williams, Alkylation, is being transferred to the Head Office Manufacturing Operations Department as an Engineer, also effective February 1.

R. C. Imhoff, Catalytic Cracking, is being transferred to Norco Refinery February 1, as an Engineer in the Technological Department. D. J. Zuckammer, Economics and Scheduling, was transferred to the Norco Technological Department as an Engineer, effective January 15.

deficit for 1965. Thus, The Travelers Insurance Company was unwilling to continue the Program unless premiums were increased. The amounts of the premium increases instituted by The Travelers were kept to a minimum. This was accomplished by adding a "coordination of benefits" provision to the Shell HSM Program.

### Provision Explained

Briefly, coordination of benefits is a method of claim settlement developed by the insurance industry to be used when individuals are insured under more than one group health policy. Without this provision, the premium increases needed to continue the HSM Program would have been approximately

40 per cent higher than those announced.

A detailed explanation of the coordination of benefits provision in the Shell HSM Program was one of several attachments sent with the announcement. Also enclosed was a pamphlet titled "What Co-ordination of Group Health Insurance Benefits Means to You."

The pamphlet and other attachments are worthy of your careful attention. Be sure to read them thoroughly before completing your application card for enrolling in the revised Shell HSM Program. Please remember to return your HSM application card by January 31, 1965, even if you continue your present coverage or reject coverage.



## Shell Review

Published monthly for the employees of the Shell Oil Company, Wood River Refinery.

W. F. OSTERLOH ..... Editor  
Box 262, Wood River, Illinois. Phone 342  
Address Communications to Editor, Shell Review,



# Shell Family Christmas Party Scenes - - 1964



**TOP ATTRACTIONS** at the 1964 Shell Family Christmas Party, attended by an estimated 3,000 persons, were Russ David and his combo, and of course, Santa Claus. In the scene above, David is helping one of Santa's young fans reach over the crowd for a handshake with the jolly fellow. At left, the excitement didn't seem to interfere with the rest for young Mary Ellen Smith, daughter of H. L. Smith, Engineering Office, sleeping in her mother's arms.

**THE AUDIENCE** included many children. Anthony Cafazza, Lube Oils, is at right in this view of the crowd. At the right, Retiree Perry Edsall, former Experimental Laboratory employee, watches the show with grandson, Charles Hemphill III.



## Births

Mr. and Mrs. H. J. Foederer, a daughter, Julie Ann. Foederer is an Accountant in the Treasury Department.

**SANTA AND HELPER.** In this case, the helper is 13-year-old Anita Colombo, who appeared at the Shell Family Christmas Party December 10 as a singer with the Russ David combo. The youthful vocalist sang as Becky Thatcher in the St. Louis Municipal Opera presentation of Tom Sawyer last summer.



**F. W. Weber** Lube Oils 40 Years  
**J. Beck** Lube Oils 35 Years  
**H. J. Hayes** Fire & Safety 35 Years  
**J. A. Moore** Eng. Field 35 Years  
**J. Spudich** Eng. Field 35 Years  
**R. E. Westbrook** Eng. Field 35 Years  
**F. B. Jones** Refinery Lab 30 Years  
**O. Kassak** Lube Oils 30 Years  
**O. Marlinghaus** Eng. Field 30 Years  
**H. M. Wetter** Alkylation 30 Years



**G. W. Ash** Eng. Field 25 Years  
**L. T. Boverie** Purch-Stores 25 Years  
**C. W. Chappell** Eng. Field 25 Years  
**H. C. Dreon** Eng. Field 25 Years  
**W. E. Fansler** Utilities 25 Years  
**A. M. Gregory** Eng. Field 25 Years  
**A. Guccione** Eng. Field 25 Years  
**J. Hozian** Eng. Field 25 Years  
**H. W. Johnson** Eng. Field 25 Years  
**R. A. Nesler** Eng. Field 25 Years



**F. L. Vazzi** Fire & Safety 25 Years

## 20 Years

- E. S. Barnett Eng. Field
- C. F. Budde Eng. Field
- L. D. Ellis Eng. Field
- L. H. Hayes Compounding
- H. A. Huber Eng. Field
- E. B. Johnson Utilities
- H. R. King Aromatics
- L. A. Moggio Eng. Field
- J. J. Nicosia Eng. Field
- S. Ostanik Alkylation
- P. R. Showalter Eng. Field
- E. L. Sinclair Eng. Field
- G. W. Vannoy Eng. Field
- L. M. Wedner Dispatching

## 15 Years

- G. L. Archibald Aromatics
- C. B. Barton Alkylation
- C. L. Butler Eng. Field
- C. W. Carney Eng. Field
- C. E. Herzog Compounding
- F. B. Hess Lube Oils
- J. W. Jarvis Eng. Field
- R. D. Jones Eng. Field
- A. S. Kellerman Utilities
- H. J. Lincoln Eng. Field
- J. E. Pazero Aromatics
- G. Perrin Jr. Utilities
- R. C. Phillips Eng. Field
- A. J. Whittaker Aromatics

## 10 Years

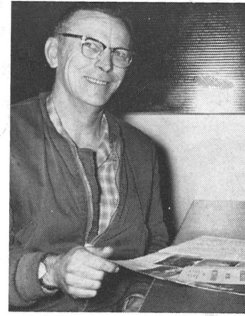
- D. R. Allen Tr.-Eff. Cont.
- B. J. Barnett Distilling
- E. D. Bartosiak Utilities
- A. A. Beerup Alkylation
- T. Bertagnolli Compounding
- E. H. Boldt Eng. Field
- W. J. Brockmann Research Lab
- J. L. Calderwood Lube Oils
- R. H. Chulka Lube Oils
- A. L. Galletta Research Lab
- J. H. Gerard Utilities
- S. L. Ingles Tr.-Eff. Cont.
- L. H. Jarman Aromatics
- S. Johnson Eng. Field
- J. O. Long Utilities
- J. F. Malone Eng. Office
- J. L. BcBroom Aromatics
- J. D. Mussatto Utilities
- J. D. Paterson Compounding
- R. A. Piggott Aromatics
- C. W. Schwab Eng. Field
- A. J. Slivka Treasury
- V. E. Williams Eng. Field
- O. Wildhaber Jr. Eng. Field

## W. L. Howell Authors Magazine Article

W. L. "Bus" Howell, Craft Foreman, Engineering Field, was the author of an article, "College of the Outdoors," in a recent edition of the MISSOURI CONSERVATIONIST, monthly publication of the Missouri Conservation Commission.

The magazine in describing Howell's article states: "Mother Nature and her assistants conduct the school of hard knocks, lumps and bruises for those students who insist on learning of the outdoors through exposure to the elements."

The description is a good one. Howell's article is a tongue-in-cheek narrative of a fishing trip on the much-written-about Current River in Missouri - a trip in which much of the



fishing was for camping gear which went to the bottom when their boat capsized. Howell humorously reports most of the

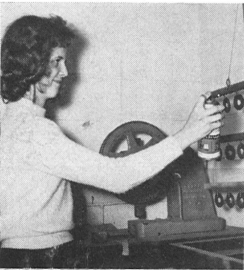
gear was recovered, in one way or another, and despite the unexpected dunking, he considered the trip a success.

Philosophizing a bit in his article, Howell writes: "When you are in trouble there are generally other outdoor people at hand to give you a lesson in the virtues of a helping hand - - -"

And he concludes: "Every stream trip or night spent camping in the woods contributes to a man's overall knowledge of just how little he knows of his surroundings. Indeed, it is wise for all men to get outdoors, open their senses and learn lessons not taught in stone buildings or written in books."



**SHELL SPONSORED** Junior Achievement companies had a busy pre-Christmas season. In the photo above, members of the Shell Achievement Company are shown making starfoam Christmas ornaments. At left, Connie Jones, daughter of Hubert Jones, Engineering Field, paints washers which were a part of a game sold by the Wood River-Alton-Roxana Company. Shell sponsors five JA companies this year, with Staff personnel meeting weekly with the teenagers to advise them as they gain experience in business operations.



## Laborers Undefeated in Refinery Basketball Loop

Paced by the two top scorers in the league, the Laborers were undefeated after three weeks of action in the Shell Recreation Association Basketball League. The Laborers had scored wins of 49-41 over Research, 39-33 over Tech Department cagers and 57-27 over the Engineers.

Bill Johnson and Bill King were the leaders of the Laborers' scoring attack in each of the three games. In the game with Research, they scored 19 and 24 points respectively. King led the scorers with 16 points in the game with Tech, and Johnson hooped 22 points in the game with Engineering.

Johnson is the league leader in the average-points-per-game column, with 20.5, scoring 41 points in two games. King is second with an average of 15.6 for a total of 47 points in three games.

Research is in second place in the standings with a 2-1 record. They scored a 61-31 victory over the Engineers, paced by Roger Woodrome with 14 points. Research also scored a 53-36 victory over Tech. Woodrome is third highest scorer in the league, averaging 13.6 points per game for three games.

The Engineers are in third place with a 1-2 record. Their only win was a 41-37 victory

over Tech on the opening night of the season. Darrell Ottwell, fourth in the league with a 13 points-per-game-average, pumped in 20 points in the winning effort.

## Shell TV Golf Series Starts Fourth Year

"Shell's Wonderful World of Golf" began its fourth consecutive year on network television January 17, when Dave Marr and Bernard Hunt teed off at Sunningdale Golf Club, Sunningdale, England.

That show was the first of 11 to be telecast in color over the ABC Television Network in a series scheduled for each Sunday afternoon through March 28. The show may be viewed in the St. Louis area on KTVI, Channel 2, from 3 to 4 p.m.

As in the three previous successful years of the show's existence, the series will feature famous golfers from the United States playing on equally famous courses all over the world. The U. S. golfers will compete with the top professional golfers of the nation in which the matches are played.

## North Property Top First Half Bowling Team

North Property bowlers won the first half crown in the Shell Recreation Association-sponsored Refinery bowling league, capturing two straight games in a roll-off with the Research Relics. North Property was winner of the league's first quarter and the Relics the second.

North Property's Clarence Shirley shared the league lead for individual high average with Len Massa of the Mixers at the end of the first half. Both men held pin averages of 171. Charles Irwin and Don Isted, both of the Boiler House team, were tied for third and fourth places with averages of 168 pins.

Isted holds the individual high single game score so far in the season with a 249 game. He is followed by Joe Klink of the Tool Room team with a 244 game and Irwin with a 243.

W. E. Hemiz of the Research Rejects holds the league's high three game series score for the season with a 612 series, followed by Massa with a 589 series and Herschel Nelson of the Tool Room team, who has a 583 score.

Team-wise, North Property holds the highest three game series scratch score with 2,654.

## J. W. Fallon Is Elected President Of SRA Camera Club for 1965

J. W. Fallon, Engineering Office, will serve as president of the Shell Camera Club in 1965. He succeeds P. J. Belanger, Lube Oils, as head of the Shell Recreation Association-sponsored organization.

Other officers include C. W. Andrews, who was re-elected vice president; and O. J. Abernathy, Engineering Field, who was elected secretary-treasurer succeeding R. L. Turner.

Belanger will serve this year as editor of the Camera Club's monthly bulletin, succeeding Mr. and Mrs. M. S. Waller. The new officers were elected at the December meeting of the organization.

In photo competition for the year, Turner was first place winner and Belanger second. Third place went to M. C. Robinson, Engineering Field.

## IPI Premiums Waived for Rest of Year

Beginning February 1, 1965, and continuing through the rest of 1965, Shell employees who subscribe to the Company's Income Protection Insurance Plan can forget about paying premiums. Under Shell's contract with The Travelers Insurance Company, the equivalent of 11 months' premiums will be waived during the months of February through December for those who were members of the Plan as of January 1, 1965.

Shell's Income Protection Insurance Plan also will be liberal-

ized in two important ways, both of which will provide additional coverage should a member become sick or injured on or after February 1, 1965.

First, the maximum benefit payment will be increased from \$40 to \$50 a week.

Second, benefits will be payable after an employee has been absent due to accident or sickness one complete scheduled working day, or eight scheduled working hours, whichever is less. The current provision requires an absence of three

complete scheduled working days, or 24 scheduled working hours, whichever is less, before benefits are payable.

Membership in the Shell Income Protection Insurance Plan is optional for employees. As a form of contributory, non-occupational accident and sickness insurance, it provides you with a portion of your income should you become disabled during your first year of employment. Thereafter, it provides you with additional income when your full-pay benefits under the non-contributory Shell Disability Benefit Plan have been exhausted.

## SHELL OIL COMPANY Wood River, Illinois

Return Requested

IS THIS CORRECT?

IF NOT, NOTIFY YOUR SUPERVISOR:

U. S. POSTAGE  
PAID  
Edwardsville, Ill.  
Permit No. 25

## Expansion

(Continued from Page 1)  
mand for Shell products is told in the November-December issue of SHELL NEWS. As a detailed report, the information it contains should be heartening to all of us having a stake in the Company as employees or shareholders or both.

Turn in a Safety Slogan - You May Win a Zenith Radio  
SLOGAN CONTEST ENTRY BLANK

NAME ..... BADGE NO. ....

DEPARTMENT .....

MY ENTRY FOR THE SAFETY SLOGAN CONTEST IS:

Place in Contest Boxes at Gates, or Send to Fire and Safety Department

"Stay Alive in 65"