



# REVIEW

Wood River, Illinois

Vol. 25 No. 7

August, 1962

## Shell Is Helping Assault on Speed Record

A 25-year-old Californian, sponsored by Shell, aims to become the "fastest man on wheels."

Craig Breedlove, who built his first racing car at the age of 14, will try to set a world land speed record of more than 400 M.P.H. this month at Utah's Bonneville Salt Flats. He will use an experimental three-wheeled vehicle powered by a jet engine.

To help him in his quest, Shell has provided Breedlove with financial backing, technical assistance, and special fuel and lubricants. Shell engineers will be with Breedlove on the Bonneville Salt Flats to help with the handling and application of fuel and lubricants. Special tires for the racing car were designed and custom-made by Goodyear Tire and Rubber Company.

Breedlove is aiming his jet racer, named the "Spirit of America," at the world land speed record of 394.2 M.P.H., established in 1947 by an Englishman, John Cobb. Another famous English racer, Donald Campbell, recently announced plans to assault this record early in 1963. An American has not held the land speed record since 1928, when Ray Keech sped 207.55 M.P.H. in a three-engine White Triplex at Daytona Beach, Florida.

Technically, Breedlove's car is not eligible at the present time for the land speed record because it has a jet instead of a piston engine, and only three wheels instead of the traditional four. However, racing authorities believe Breedlove's unconventional vehicle will be accepted if it sets a new world speed record over the Bonneville course, which is approved by the United States Auto Club.

### Fuel Produced Here

Shell will supply the racing car with special turbine fuel developed, tested and manufactured through the combined efforts of Shell's Products Application Department, the Wood River Refinery Research Laboratory, and the Wood River



CRAIG BREEDLOVE, left, discusses with W. E. Lawler, Shell's District Manager at Santa Monica, California, a model of the racing car in which Breedlove hopes to set a world land speed record of more than 400 M.P.H. in August at Utah's Bonneville Salt Flats.

Refinery. The fuel was developed by Shell for use in testing prototype turbine engines for future commercial aircraft.

At the record speed anticipated, the "Spirit of America's" wheels will turn at more than 3,000 revolutions a minute. Because of the expected high concentration of heat, Shell's DARINA® Grease AX has been selected to lubricate the racer's wheel bearings. DARINA Grease AX is a heat-resistant, multi-use lubricant developed specially for commercial vehicles such

as trucks, buses and other heavy-duty applications.

Breedlove started racing cars in competition at age 16. He captured his first trophy at age 17 by driving

(Continued on Page 4)

## Hart Arrives at Wood River to Assume Duties

D. F. Hart, formerly of Shell's Head Office in New York, arrived at Wood River in mid-July to assume duties as Manager, Economics and Scheduling. He is filling a position formerly held by T. C. Graham, who recently was named Process Superintendent in charge of Distilling, Treating - Effluent Control and Economics and Scheduling.

Hart, a native of Chicago, has served Shell since 1948, beginning his career with the Company at the Wilmington, Calif., Refinery. He was serving as a Senior Technologist in the Head Office Technological Department at the time of his transfer to Wood River.

Hart, his wife, Margaret, daughter, Dana, 8, and son, John 6, reside at 20 Cardigan Drive in Ferguson, Mo.



Hart

The Shell Recreation Association Board of Governors announced plans this month for what they expect to be the biggest and best SRA family picnic ever held. The time and date for the annual event at the Kendall Hill Park is noon Sunday, September 9. In case of inclement weather the picnic will be held at the same time the following Sunday, September 16.

An afternoon full of entertaining events will be highlighted by free carnival-type rides for children. The rides will be both mechanical and animated. Every child will have the opportunity for a turn or turns in mechanical cars or astride a pony. Rides also will be available in a pony-drawn wagon.

While the youngsters are being amused in this manner, traditional picnic-type games and feats of skill or strength will be available for older children and adults. Scheduled for 1:45 o'clock that afternoon is the annual Refinery horseshoe pitching tournament.

Entries in singles and doubles competition should be sent to Ray Robinson, Engineering Office, before September 7.

Golfing enthusiasts will have an opportunity to show their talents in a hole-in-one contest. There will be a prize for the golfer who lands his ball nearest the cup in a contest which will be held on the softball diamond.

There will be a softball throw-

## Bloodmobile Visit Plans Are Made

Wood River Refinery employees will have another opportunity to contribute to the American Red Cross Bloodmobile next month when the Bloodmobile makes its annual visit to the Roxana Community Center Building.

A committee of Refinery employees has been organized to plan for participation by Refinery personnel during the three-day visit September 11, 12 and 13. As in the past, employees who can be spared from their work will be given time off without loss of wages to contribute to the Bloodmobile.

According to American Red Cross records for fiscal 1961-62, local hospitals used 3,049 pints of Red Cross blood during that 12 month period. The Alton-Wood River Red Cross office also reports area residents used 245 pints of blood, administered at other or non-local hospitals, and 58 pints of Red Cross blood were used for

Wood River Refinery employees contributed 490 pints of blood during that period, 479 during a Bloodmobile visit last September, and 11 pints at other times during the winter. Employees contributed 497 pints of blood to the Bloodmobile during a visit in 1960, and a record of 519 pints was set in 1959.

Employee participation in the Red Cross blood program entitles all employees and members of their families to Red Cross blood whenever and wherever needed. You do not need to worry about replacing blood or securing donors if hospitalized locally, since all local hospitals obtain blood through the Red Cross blood program. If you are hospitalized anywhere else and need blood, you should contact the Red Cross office so that blood can be made available to you.

Prior to this year's three day Bloodmobile visit, every Refinery employee will be offered the opportunity to make a contribution of what could be a life-saving pint of blood. Each employee soon will receive an IBM card asking whether he or she will or will not donate blood; if so, which of the three days is preferred for making the donation; and in the case of shift workers, which shift he will be working on the day preferred.

Times for the operation of the Bloodmobile are being arranged so that every shift can participate. On September 11, the Bloodmobile will accept donors from noon to 6 p.m., giving 4 to 12 shift workers an opportunity to contribute. The Bloodmobile doors will open at 8 a.m. the following morning, offering the opportunity for midnight shift workers to make a contribution when they come off work. Hours that day will be from 8 a.m. until noon, and from 1 to 3 p.m. On Thursday, the last day of the visit, the Bloodmobile will operate from 9 a.m. until 3 p.m.

As in the past, transportation from the Refinery to the Community Center Building, and back, will be provided by the Company. Transportation and payment of wages while employees are away from work to make blood donations are the Company's sizeable contributions to the program.

Eight Refinery employees are on the committee making arrangements for the visit. J. G. McCleish, Engineering Office, is chairman of the committee. Serving with him are V. F. Walker, Experimental Laboratory; H. C. Grammer, Treating - Effluent Control; Herschel Nelson, Joe Ahrling and C. L. Baker, Engineering Field; R. L. Dorries and W. F. Osterloh, Personnel and Industrial Relations.

## Service Dinner Is Scheduled for September 13

The second Shell service recognition dinner of 1962 will be held Thursday, September 13, at the Hotel Stratford in Alton. An estimated 275 employees who observe 10, 15, 20, 25, 30, 35 or 40 year anniversaries of service with the Company during the last five months of 1962 are eligible to attend.

Entertainment for the evening will be provided by Russ David and his combo. David, St. Louis radio and television entertainer, has been a popular attraction at various Shell social functions in the past. The program for the evening includes a social hour beginning at 6 p.m. and the dinner at 6:30. The musical entertainment will follow the dinner.

(Continued on Page 5)

## What's Inside?

- Barbecue Pensioner Photograph and List of Retired Employees Attending ..... Page 2
- General Scenes ..... Page 3
- New Look Road Maps—And a Look at an Old-Timer ..... Page 5
- Bowling Champions—1962 Story and Photograph Page 6
- SRA Golf Tourney Plans Announced ..... Page 6
- Questions and Answers About You and the Oil Industry ..... Page 4

# 243 Retired Employees at Annual Barbecue



A PORTION OF THE MANY RETIRED EMPLOYEES ATTENDING THE BARBECUE POSED FOR THIS PHOTOGRAPH

## Retired Shell Employees Attending Annual Barbecue Are Listed

A total of 243 retired Shell employees attended the annual Shell Barbecue, Saturday, July 14, at the American Legion Park in Edwardsville. A large part of that number posed for the group photograph shown above. All of the pensioners who registered at the Barbecue are listed below in the order in which they registered.

H. V. Wolfe, Grayville; A. G. Henna, Brownstown; O. B. Worthy, Wood River; W. I. Shattuck, Roxana; G. C. Zirges, Worden; J. I. Bouch, New Douglas; J. B. Raines, Roxana; L. Eller, Staunton; F. S. Howard, West Frankfort; F. A. Miller and C. Dilling, Godfrey; C. F. Holtgreve and E. F. Schaberg, Edwardsville; J. H. Scott, Alton; J. T. Fitzgerald, G. F. Waffensmith and W. T. Lewis, Edwardsville; W. V. Rhoads, East Alton; A. C. Krueger, Wood River; R. D. Bennett, Staunton.

G. M. Kendall, Fieldon; J. C. Brown, East Alton; J. W. Large, Chesterfield; J. H. Markham, Edwardsville; D. N. Zumwalt, East Alton; B. A. Hill, Wood River; W. Linder and W. L. Sehnert, Edwardsville; L. A. Kramer, Jerseyville; L. G. Frazier, Roxana; E. R. Riley, Bethalto; W. S. Schneider, Roxana; W. G. Kovarik, Edwardsville; A. M. Barnwell, Alton; J. Andreaus, Gillespie; C. B. Starnes, Edwardsville; W. J. Meyer, Alton; L. J. Jackson, Roxana; C. McReynolds, Roxana; M. F. Dugan, Alton.

J. A. Eilenberger, Alton; J. B. Rull, Mt. Olive; H. V. Evans, Bunker Hill; J. H. Tippett, Wood River; A. W. Pardeck, East St. Louis; E. Feldman and S. J. Tipsword, Alton; J. F. Meyers, Wood River; B. H. Williams, East Alton; G. Cruthis, Pocahontas; J. E. McMichael, Edwardsville; W. L. Bienemann, S. Roxana; H. F. Wallace, Louisiana, Mo.; F. E. Williams, Wood River; J. H. Murphy, Alton; W. Arth, Edwardsville; H. L. Elder, G. C. Mueller, S. Henson, Alton; E. N. Piazzi, Collinsville.

L. P. Noeltner, St. Jacob; L. A. McBroom, Butler; B. L. Tanner, East Alton; D. L. Cummings, Wood River; W. F. Strayhorn, Maplewood, Mo.; C. Summers, Hartford; W. Koch, Granite City; O. L. Wilhold, Edwardsville; R. S. Sullivan, Wood River; C. A. Reynar, Alton; S. Aldredge, Wood River; H. F. Head, Edwardsville; C. W. Vogel, Sorento; W. J. Simmons, Wood River; W. T. Murphy, McLeansboro; R. H. Kiser, Centralia; R. R. Hoover, East Alton; L. E. Grosh and J. E. Sellier, Alton; L. N. Talmage, Wood River.

E. C. Waltrip, East Alton; F. J. Pinkas and C. E. Hawthorne, Edwardsville; W. D. Riley, Alton; G. K. Friemann, Coulterville; F. W. Schmid, Wood River; O. A. Kleintert and J. E. Kennedy, Roxana; L. F. Smith, East Alton; P. A. Ufert, Wood River; E. Lee, Edwardsville; H. A. Rink, Godfrey;

W. E. Dendahl, East Alton; M. F. Traunecker and L. F. Laux, Alton; F. Kolesa, Edwardsville; C. A. Kreider, Roxana; M. H. Belflower, St. Ann, Mo.; C. Ellington, Roxana; H. E. Keene, Alton.

T. F. Jones, and E. W. Johnson, East Alton; R. Hunter, Alton; H. A. Dumont, Edwardsville; M. E. Bohlmeier and R. Bierbaum, Alton; W. R. Mitchell, Roxana; V. V. Lucas, Bethalto; J. Venable, Roxana, V. J. Mellor, East Alton; O. J. Espenschied, Highland; O. R. Reeves, South Roxana; J. M. Davis, Alton; J. A. Schilling, Bethalto; T. W. Stouffe, Shipman; F. O. King, Alton; J. S. Wright, East St. Louis; A. H. Clevenger, South Roxana; G. H. Van Horne, Godfrey; J. W. Madosh, Mitchell.

H. B. Kincaid, Alton; H. C. Herbstreit, St. Louis, Mo.; H. C. Reding and G. W. Gordon, Edwardsville; J. F. Burns, Granite City; I. L. Wigger, Alton; C. S. Blankenship, Bethalto; H. D. Wall, Edwardsville; H. E. Rethorn, Roxana; G. K. Bruce, Garden Grove, Calif.; H. E. Harvick, Wood River; W. M. Jackson, Alton; O. R. Simpson, Godfrey; L. Brett, Wood River; R. J. Brendle, Edwardsville; W. A. McEuen, Pearl; H. W. Sheppard, Pleasant Hill; C. Campbell, and C. M. Cochran, Alton; J. J. Dooling, Wood River.

L. J. Disher, Shipman; G. C. Cunningham, Edwardsville; E. O. Schoeneweis, Bethalto; R. F. Gooch and G. Almon, Godfrey; R. M. Fields and W. F. O'Hair, Alton; H. M. Kay, Edwardsville; A. Bowman, Bethalto; A. L. Luebbers, Moro; T. Stadelman, Bunker Hill; M. Beltz and A. G. Fuchs, Wood River; R. E. Bretzman, Afton, Mo.; J. R. Davidson, Wood River; E. R. Smith, Kemper; L. E. Hebl, Freeport, N. Y.; D. L. Harvick, Roxana; J. G. Robinson, Wood River; W. Clayton, Hartford.

V. V. Alexander, Wood River; J. F. Webber, Alton; C. Bledsoe, Bethalto; R. Hill, South Roxana; G. G. Welch, Alton; C. J. Bryan, St. Louis, Mo.; E. A. Rintoul, Wood River; C. Jestes, Edwardsville; P. B. Rands, C. W. Hand and C. W. Hayes, Alton; L. L. DeWester, Roxana; C. F. Gruenewald, St. Louis, Mo.; R. W. Soapes, Staunton; J. R. Shenton, Belleville; C.

R. Arnold, Edwardsville; G. Knauss, Wood River; A. Ruyle, Prairietown, C. E. Davison, Edwardsville; J. A. Walker, Bethalto.

C. H. Puckett, Wood River; W. Hix, Staunton; F. Frizzell, Marine; J. W. Lucas and H. E. Brown, Alton; F. F. Kuehnel, Wood River; W. A. Roseberry and O. H. Blair, East Alton; J. G. Cuddy, Roxana; L. E. Gammon, Overland, Mo., L. Warford, Godfrey; W. A. Stanton, Donnellson; L. E. Sawyer, Moro; C. E. Provov and A. A. Shashek, Edwardsville; M. K. Phillips, Litchfield; J. L. Slaughter and C. E. Dey, East Alton; I. F. Killam, Roxana; J. J. DeCota, South Roxana.

B. L. Wolverton, Roxana; A. Hartley, Bunker Hill; B. H. Joslen, Roxana; W. J. Lascoe, South Roxana; J. B. Gerard, Edwardsville; G. D. Allen, Mozier, E. W. Hessel, Marine; J. W. Reid, Jr., Edwardsville; F. Plesek, East Alton; W.

Manning, Plainview; A. B. Hoppe, Edwardsville; S. F. Leffler, Wood River; A. S. Hicks, Alton; J. R. Ewers, Pleasant Hill; E. L. Crutchley, Jerseyville; G. Holford, Bethalto; J. H. Markham, Edwardsville; E. H. Uhley, Morris Chapel, Tenn.; V. L. Major, Steelville, Mo.; J. F. Quinlan, Granite City. C. W. Deitz, Edwardsville; L. A. Knipping, South Roxana; J. B. Sweeney, Alton; G. C. Grange, Lake Mary, Fla.; L. J. Breitweiser, Brighton; W. E. Lane, Hillview; I. Nesbitt, Belleville; N. J. Snow, Wood River; C. J. Wilson, Edwardsville; H. E. Thompson, Alton; J. E. Phillips, East Alton; W. Schreiber, Edwardsville; D. W. Smith, E. F. McCrellis and E. L. Green, Wood River; H. T. Lanham and H. R. Lenhardt, Alton; H. Hockinghomer, Caledonia, Mo.; G. K. Wood, Bethalto; J. Vasey, Jr., East Alton; L. E. Titsworth, Alton; C. C. Nichols, Hartford; R. L. Misegades, Alton.



### Shell Review

Published monthly for the employees of the Shell Oil Company, Wood River Refinery.

**W. F. OSTERLOH** ..... Editor  
**Reporters**  
Operating Departments ..... F. E. Zapf  
Research Laboratory ..... J. A. Bowman  
Safety ..... E. B. Wiley  
Engineering Field Office ..... C. L. Baker  
Purchasing-Stores ..... Brenda Langer

Address Communications to Editor, Shell Review, Box 262, Wood River, Illinois. Phone 863

## First Aid First Treat Burns With Cold

- Q. Is it true that first aid authorities now recommend cold treatment of burns?
- A. This is true. Cold water or ice when applied to a newly burned area relieves pain, prevents swelling and promotes healing.
- Q. Doesn't this represent quite a change in thinking? I always heard that a person should never put cold water on a burn.
- A. Quite a change, indeed. It is only recently that medical opinion has begun to achieve agreement on this subject.
- Q. Does the "cold treatment of burns" apply to any type of burn, such as electrical, chemical, flame or contact with hot oil, grease or asphalt?
- A. It certainly does. In the case of contact with flame or hot substances, immediate cooling is the object. In the case of chemical burns, cold water serves the double purpose of washing away the chemical and providing the cooling effect.
- Q. The small child of an employee stepped in hot coals where a picnic meal had been prepared. What would be the best way to apply cold in this case?
- A. The employee packed the child's foot in ice cubes that had been used for cooling lemonade. Potentially severe burns were reduced to minor burns before the child was taken to a physician.
- Q. What about promptness and duration of cold treatment?
- A. Apply cold as soon as possible. Continue for at least 30 minutes if practicable.

**APPLY COLD TREATMENT FIRST. THEN CONTACT A PHYSICIAN.**



# 1,500 Persons Attend Annual Shell Barbecue

## Winners of Events Listed

A barbecue crowd estimated at more than 1,500 persons turned out on one of the warmest days of the year for the annual Shell 10 and over barbecue Saturday, July 14, at the American Legion Park in Edwardsville.

Included in the crowd were 243 retired Shell employees who thoroughly enjoyed the opportunity to visit with old friends and former fellow employees.

Alonzo Bowman, Route 1, Bethalto, again was the oldest retired employee present. Bowman, who will be 86 years of age on Christmas Day, retired March 1, 1946. He came to the barbecue with his son, J. A. Bowman, Research Laboratory.

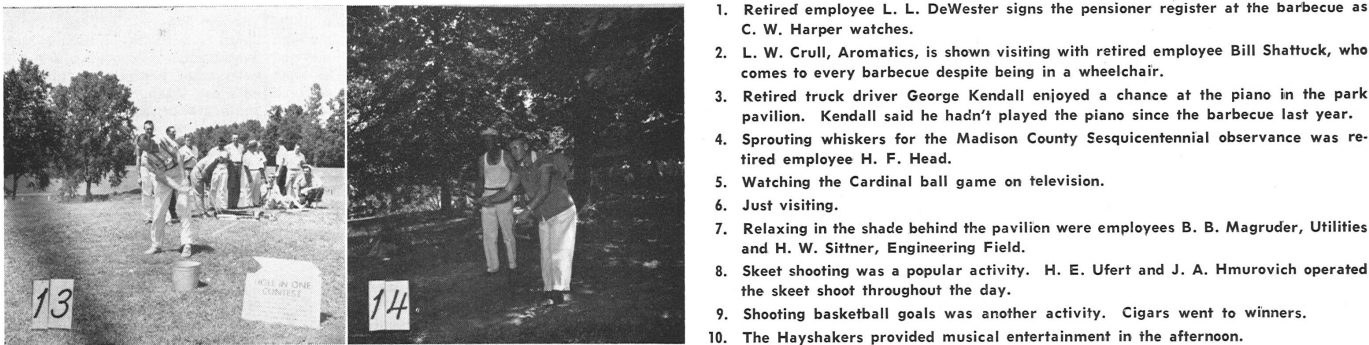
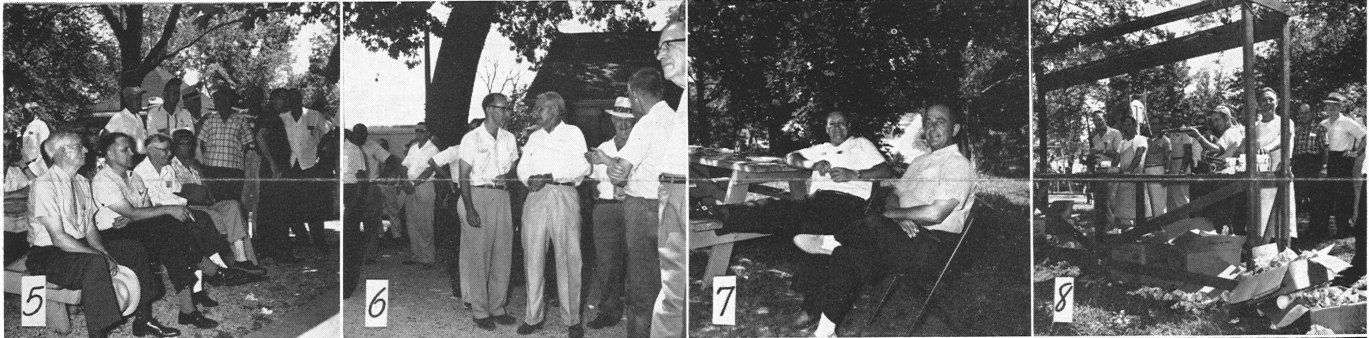
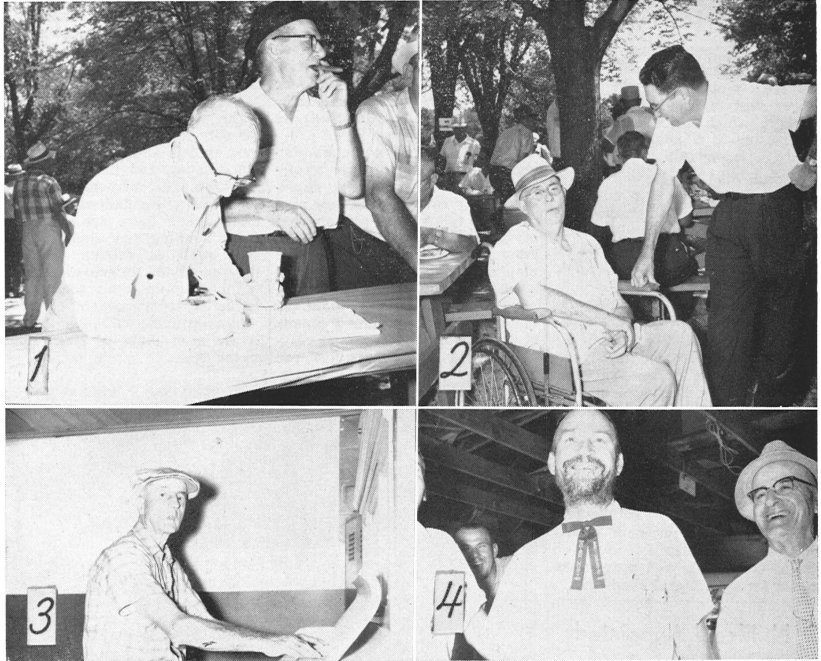
Next oldest to attend was J. W. Madosh, Mitchell, and third oldest by only two days was G. C. Mueller, Alton. Both Madosh and Mueller are 84 years of age. Madosh was born January 24, 1878, and Mueller on January 26 of the same year.

The retired Shell man traveling the greatest distance to attend the event was G. K. Bruce, who came all the way from Garden Grove, Calif. G. C. Grange, Lake Mary, Fla., was the pensioner traveling next to the greatest distance.

Those attending were entertained by the Hay Shakers, a hillbilly musical group, and skeet shooting, shooting basketball goals and ringing the bell on the high-striker were other forms of entertainment. Several persons enjoyed watching a Cardinal baseball game on television and many just amused themselves eating and visiting.

A hole-in-one contest proved to be a popular addition to the barbecue agenda. Fred W. Rood, Manager, Engineering Office, was winner of the event, landing a golf ball just five feet, 10 1/2 inches from the cup.

Fourteen other prize winners in the golfing contest are listed in the order in which they finished. They are W. M. Fly, Treasury; F. E. Pullen, Utilities; J. W. Ogg, Engineering Office; W. A. Malseed, Catalytic Cracking; J. W. Davis, Engineering Services; D. F. Nisbet, Research Laboratory; J. S. Brien, Personnel and Industrial Relations; J. E. Kingery, Engineering Services; J. I. Smith, Aromatics; B. L. Hill, Engineering Field; J. Gregor Jr., Refinery Laboratory; C. L. Early, Research Laboratory; L. J. Lapelle, Thermal Cracking; and L. E. Purdy, Alkylation.



1. Retired employee L. L. DeWester signs the pensioner register at the barbecue as C. W. Harper watches.
2. L. W. Crull, Aromatics, is shown visiting with retired employee Bill Shattuck, who comes to every barbecue despite being in a wheelchair.
3. Retired truck driver George Kendall enjoyed a chance at the piano in the park pavilion. Kendall said he hadn't played the piano since the barbecue last year.
4. Sprouting whiskers for the Madison County Sesquicentennial observance was retired employee H. F. Head.
5. Watching the Cardinal ball game on television.
6. Just visiting.
7. Relaxing in the shade behind the pavilion were employees B. B. Magruder, Utilities and H. W. Sittner, Engineering Field.
8. Skeet shooting was a popular activity. H. E. Ufert and J. A. Hmurovich operated the skeet shoot throughout the day.
9. Shooting basketball goals was another activity. Cigars went to winners.
10. The Hayshakers provided musical entertainment in the afternoon.
11. A left handed sledge wielder at the high-striker.
12. Just resting were Ed Brown and R. L. (Jack) Turner. Brown and Turner were photographed on this same bench last year.
13. A hole-in-one contest was a popular new activity.
14. Pitching horseshoes was another sport. About to throw a ringer is Lester Skeldon, Thermal Cracking, as Frank Milster, Engineering Field, watches.

## Barbecue Scenes

## Shell Income Is Up 8 Per Cent in First Half of '62

Shell Oil Company has announced that consolidated net income for the six months of 1962 was up 8 per cent to \$74,936,998, or \$1.25 a share, which compares with \$69,683,188, or \$1.15 a share, for the same period in 1961.

Consolidated net income for the second quarter of 1962 was \$36,670,077, or 61 cents a share. This income in the Company's history and is 5 per cent over the 1961 period when net income was \$34,974,006, or 58 cents a share.

During the first half of 1962, the Company's refined product sales volume increased 12 per cent. Increases were recorded in all the major product classifications. Revenues, however, continued to show the effects of the depressed prices the industry has been experiencing.

Shell Chemical Company's operations in the first half showed substantial improvement over the same period of last year. The rise was largely the result of higher sales volumes because of improved industrial activity and greater demand for agricultural chemicals.

## P. N. Heald Appointed To Different Position

P. N. Heald, formerly a Wood River Refinery Process Superintendent, has been appointed Manager, Transportation and Supplies Supply Programming in Head Office Transportation and Supplies Department. He succeeds R. H. Tubman, who has been appointed to the Head Office Financial Organization.

Since leaving Wood River in early 1960, Heald has served as Manager, Manufacturing Operations, at the Head Office of Shell Oil Company of Canada, Limited, and Assistant Manager, Operations Department, Head Office Manufacturing Organization.

## Shell Helping Assault

(Continued from Page 1)

ing a "hot rod" car 103.84 miles an hour over a quarter-mile drag strip at Saugus, California. Since then, he has turned in other record-breaking performances in drag strip races. The fastest Breedlove has driven was in 1960 when he traveled 233.96 miles an hour in an Oldsmobile Lakester racing car at the Bonneville National Speed Trials.

Breedlove has spent three years designing and building his car, parts of which were put together in the garage of his Los Angeles home. Driven by a jet aircraft engine, Breedlove's racer stands six-feet high, is 35 feet long and weighs nearly three tons. It resembles a wingless jet plane and is designed to top 500 miles an hour.

\* Registered Trademark.

# Shell Road Maps Now Graced by Colorful 'New Look'

There's a "new look" to Shell road maps, now available at Shell service stations in this area.

Color reproductions of scenes typical to the area covered by the map make the new series of 90 Shell road maps highly attractive articles. Other additions or changes in the new series also make them more attractive and useful to motorists.

The color reproductions are photographs of prime tourist attractions in the area the map represents. For example, the new map of Illinois has an old covered bridge on the cover, while the Missouri map has an old mill. The map of the state of New York has a color view of Niagara Falls.

Other changes made to make the maps more useful include a change of colors to make them more readable. The former buff-colored

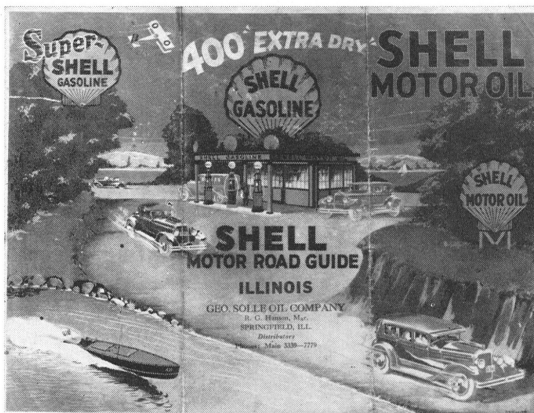
background has been changed to white, and printed details are in black instead of dark blue.

The new Illinois map includes a chart showing the locations of public recreation areas and accommodations available to motorists in those areas.

### Information About Missouri

The new map of Missouri offers not only that information in chart form, but in another map as well. The hunting and fishing map on the back is accompanied by Missouri fishing regulations and information, and there are six small maps showing the abundance of deer, squirrels, rabbits, wild turkeys, quail and waterfowl by county, making the map particularly attractive to sportsmen.

Also available on both maps are larger inset maps of large cities in the state.



## Many Changes Since Publication Of Old 'Shell Motor Road Guide'

In contrast to the new series of Shell road maps being distributed to customers this year is the old "Shell Motor Road Guide," the cover of which is reproduced above.

The old map is believed to have been published in the 1920s. It, like present day Shell road maps, was copyrighted by the H. M. Gousha Company of Chicago. But no where on the map is there a date.

The map was found recently in an abandoned house in Mt. Auburn, Ill., by C. A. Davidson, Personnel and Industrial Relations.

The map was published back in the days when there wasn't any

Highway 67. To go from Alton to St. Louis, you followed Illinois Highway 3 to East St. Louis and across a bridge there, or crossed the Mississippi and Missouri Rivers by ferry and followed a maze of gravel and dirt roads to St. Louis.

The population of Alton was listed on the margin as 26,797. East Alton had a population of 1,669, Wood River a population of 3,476, Edwardsville 8,337 and Roxana wasn't even shown.

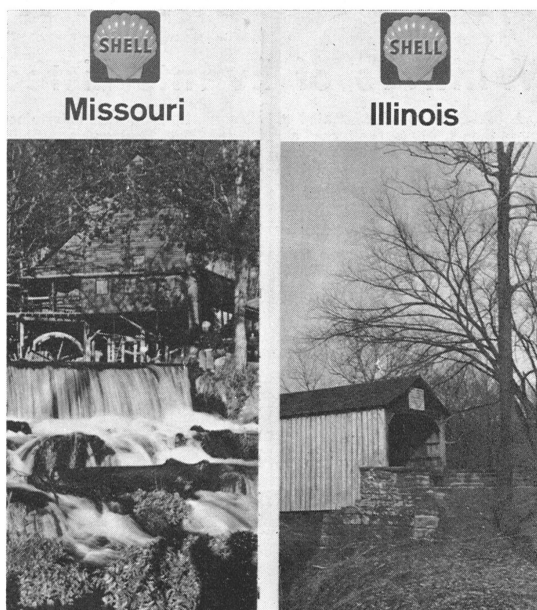
Incidentally, road maps were easier to fold in those days. The antique map folded in the middle, then quartered and then creased into thirds.

## Shell's Outboard Motor Oil and Gasoline Are Designed to Provide Top Performance

Shell Outboard Motor Oil is packaged in 12-ounce and full-quart cans. The 12-ounce can contains the right amount of oil for mixing with two or three gallons of gasoline; the quart size is for a five-to-six gallon tank. The combination of Shell gasoline with TCP\* and

Shell Outboard Motor Oil assures top outboard motor performance and prevents the formation of engine deposits that cause sticking rings, hard starting, power loss and spark-plug fouling.

\*Registered Trademark.



THE COVERS of the New Missouri and Illinois Shell Maps

## Missouri, Illinois Colleges to Get Shell Foundation Grants

Eight Illinois and Missouri colleges and universities will receive grants from Shell Companies Foundation, Incorporated, as part of the Foundation's 1962 donation budget of \$1,637,911. The Foundation receives its funds from Shell Oil Company and its subsidiaries. The 1962 donations budget marks the eighth consecutive year in which donations have exceeded a million dollars.

Both St. Louis University and Washington University in St. Louis will receive grants of \$7,500 for fundamental research. They are among 19 institutions in the United States receiving 26 such Foundation grants, \$5,000 of which is for expanding fundamental research and \$2,500 for other uses. The institutions are given full responsibility in using the funds. The St. Louis University grant is for research in the field of geophysical engineering, and the Washington University grant is for research in the field of chemistry.

Eight Shell Fellowships will go to outstanding students or young teachers doing postgraduate work at the University of Chicago, Illinois Institute of Technology, University of Illinois, University of Missouri, University of Missouri School of Mines and Metallurgy and Washington University in St. Louis. These Fellowships consist of \$1,800 personal stipends for single students and married students with no children, or \$2,100 for married students with children. The students' tuition and fees are paid and an additional fund is supplied as a cost-of-education supplement to the departments in which the students study.

Shell Fellowships at the University of Chicago will be in the fields of chemistry and physics. The Illinois Institute of Technology fellowship is in the field of chemistry. Two fellowships at the University of Illinois are in the field of chemical engineering. The Missouri University fellowship may be in the field of chemistry or chemical engineering and the Missouri School of Mines fellowship will be in chemical engineering. The Washington University fellowship also is in chemical engineering.

Shell Assists grants of \$1,500 each, divided into three \$500 grants, go to Bradley University at Peoria, the Illinois Institute of Technology and Loyola University of Chicago, to be used in the field of mechanical engineering. The money is to be used by the institutions to help in the professional development of college faculty members.

In addition to research grants, fellowships and Shell assists, the Shell Foundation provides merit fellowships for summer seminars at Cornell and Stanford for 100 outstanding high school teachers of science and mathematics; merit residencies whereby selected teachers take a minimum of 12 months advanced study at the two institutions; merit scholarships which provide four-year college scholarships through the National Merit Scholarship Corporation for 100 outstanding students planning careers as teachers of science and mathematics; and a new program of fifth year training for graduating merit scholars.

Under the Foundation's merit scholarship program, four-year college scholarships are awarded each year to 25 high school students who plan teaching careers in high school science and mathematics. This program was initiated in 1958, and 100 students now are attending institutions of their choice. The first class of 25 scholars was graduated this spring and is eligible for the new fifth year program which begins in the fall at Stanford and Cornell universities. The fifth year of study is to help merit scholars prepare for the best possible service as teachers.

## Retirements



V. F. Azzarello  
Eng. Field



C. R. Clark  
Eng. Field



J. J. Dooling  
Eng. Field



O. L. Drennan  
Cat Cracking



W. R. Jones  
Eng. Field

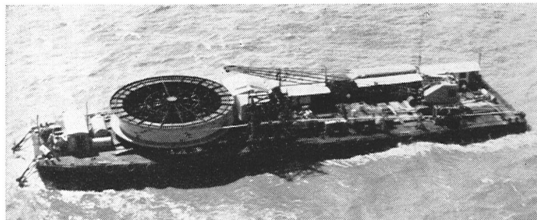


C. D. Maroe  
Eng. Field



A. J. Rosey  
Eng. Field





CONTINUOUSLY WELDED STEEL PIPE is ready to be unreeled from its giant spool aboard this barge, anchored near a Shell offshore platform. On the barge are the spool and related laying equipment, a 40-ton crane for loading and unloading equipment and living quarters for the crew. The pipe is pulled from the stationary barge by means of a tugboat.

## Shell Uses Continuous Weld Pipe From Offshore Wells

In a search for faster and more economical means of running flowlines from offshore wells in the Gulf of Mexico, Shell recently used a giant barge-mounted spool which can uncoil up to five miles of continuously welded steel pipe at the rate of 80 feet a minute. The new technique was used for Shell by Aquatic Contractors and Engineers, Inc., of New Orleans. It is based on a similar method developed in Britain in World War II to pipe gasoline under the English Channel to Allied forces on the continent.

The New Orleans Exploration and Production Area employed the method to lay two 4,239-foot sections of four-inch pre-welded pipe in 60 feet of water at State Lease 1070, 70 miles southeast of New Orleans. It took one hour and 40 minutes to unwind the two lengths from the spool, which is 40 feet in diameter and almost seven feet in height. The entire operation from

line-laying through installing end bends took only 67 hours.

Costs were 20 to 30 per cent lower than those for conventional methods which employ barges laden with linear sections of pipe that are welded together at sea. The big saving in using spooled steel pipe results from the fact that welding and joining takes place on land. Welding on barges in open water is time-consuming and also requires the use of standby tugs and other vessels.

This was the first time Shell had used coiled steel pipe in laying flowlines, although a similar spooling technique was used with plastic line in 1958 when a 900-foot line was laid for Shell in the Gulf.

Shell engineers have noted that the new technique developed by Aquatic may prove particularly useful in the development of the Company's recently acquired Federal leases in waters far offshore in the Gulf.



Mr. and Mrs. H. P. Gilomen, a son, Gary, Gilomen is an Electrician 1st, Engineering Field.

Mr. and Mrs. G. L. Sanner, a daughter, Lisa Ann. Sanner is a Chemist, Refinery Laboratory.

Mr. and Mrs. E. R. Hale, a daughter, Laurie Lynn. Hale is a Technologist, Technological.

Mr. and Mrs. S. B. Pohlman, a daughter, Steffanie. Pohlman is a Counterman, Purchasing Stores.

Mr. and Mrs. W. C. King, a son, Robert D. King is a Concrete Finisher and Yardman, Engineering Field.

Mr. and Mrs. L. P. Belobraydic, a son, Robert Lee. Belobraydic is a Pipefitter 1st, Engineering Field.



### AFFECTING YOU AND SHELL

Q. Is gasoline still a good "buy"?

A. The average before-taxes price for a gallon of gasoline at a service station in 1953 was 22.11 cents. During the first six months of 1962, the price was 19.96 cents—a drop of more than two cents. This decline in the before-taxes price of gasoline took place over a decade that registered a substantial increase in the cost of living.

In the same 1953-62 period, the average total of Federal, state and local taxes rose from 7.46 cents to 10.29 cents per gallon, making the tax rate on gasoline 50 per cent—heavier than that on any other item except liquor, and tobacco, both luxuries.

Thus, the average over-all price per gallon including taxes edged up from 29.57 cents to 30.25 cents. This means that over two cents of a nearly three-cent rise in gasoline taxes between 1953 and 1962 was absorbed by oil companies.

Yet, despite the decline in the before-tax price, gasoline purchased today at the regular pump is superior to what could

have been bought at the premium pump as little as five years ago.

As refineries have raised octane ratings, they have also lowered gasoline's gum and corrosive content; put in additives that neutralize harmful deposits in the crankcase and on spark plugs; improved the product so it won't ice up in the carburetor; and tailored it for quick starting in cold weather and against vapor-lock in hot weather.

These improvements have been incorporated into the end product in the face of rising costs in all phases of the industry. These phases include: exploring for and finding crude oil; extracting it from the earth and transporting it to refineries; converting it into gasoline and again transporting it (by pipe line, barge, tanker and truck) to its points of distribution; establishing and supplying tens of thousands of service stations on a 24-hour-a-day basis; and selling the product at a price that will enable these dealers to make a profit.

These are the factors that should be weighed in judging the value of a gallon of gasoline. It thus becomes clear that despite a 50-per-cent surcharge in Federal, state and local taxes, gasoline remains an excellent "buy". In fact, without taxes it would be cheaper than charged water.

### Service Dinner Set

(Continued from Page 1)

More than 200 Wood River Refinery employees were honored at the first service recognition dinner of the year on May 10. They were treated to a thoroughly enjoyable evening, and the September 13 function is expected to be a repeat performance. Eligible employees soon will be receiving invitations to the event, and they should make every effort to arrange to be present that evening.



### Shell Cooling System Sealer Helps Prevent Leaks

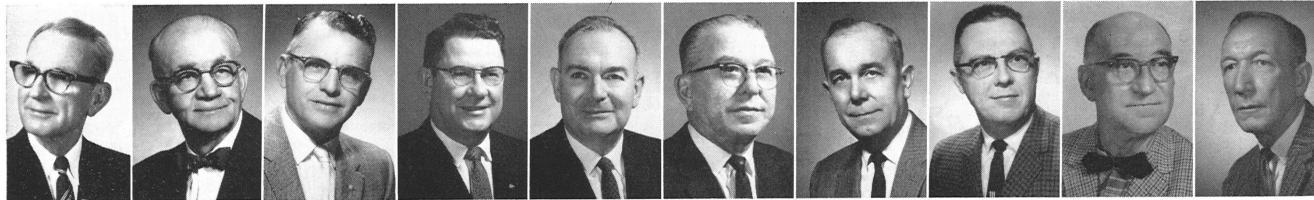
Shell Cooling System Sealer helps prevent leaks by sealing off minor cracks and fissures. It can be added to radiator water or to anti-

freeze. It not only checks existing leaks, but remains in active suspension to plug minor leaks that may later develop.

## Service



## Anniversaries



O. H. Cooper  
Distilling  
40 Years

40 Years  
F. D. Obermiller  
Ther. Cracking

L. Southard  
Treasury  
40 Years

L. B. Booth  
Eng. Services  
35 Years

C. A. Davidson  
P & IR  
30 Years

R. L. Gray  
Lube Oils  
30 Years

E. L. Green  
Eng. Field  
30 Years

U. A. Gubser  
Refinery Lab.  
30 Years

E. A. Paulda  
Eng. Field  
30 Years

E. S. Bowen  
Eng. Field  
25 Years

### 20 Years

- H. O. Apple, Eng. Field
- K. S. Baird, Aromatics
- J. C. Barton, Distilling
- H. M. Bruntjen, Aromatics
- H. R. Cartwright, Eng. Field
- W. F. Cook, Eng. Services
- G. S. Crider, Eng. Field
- J. B. Dammann, Ther. Cracking
- H. H. Dausch, Eng. Field
- H. W. Davidson, Purch.-Stores
- H. J. DeVries, Eng. Field
- R. W. Eddington, Eng. Field
- F. N. Foley, Eng. Field
- F. M. Ford, Dispatching
- J. D. Foutch, Cat Cracking
- G. E. Freezeland, Eng. Field
- C. J. Garde, Eng. Field
- J. J. Gieselmann, Aromatics
- G. T. Gray, Research Lab
- C. W. Hall, Eng. Services
- J. Hartman, Eng. Field
- C. E. Helm, Eng. Field
- C. E. Henson, Eng. Field
- H. E. Hobson, Dispatching
- O. H. Holdenried, Eng. Field
- O. F. Howland, Compounding
- D. O. Hug, Refinery Lab.
- E. M. Hughes, Gas
- M. R. Jordan, Eng. Field
- S. G. Jouett, Eng. Field
- E. D. Keck, Dispatching

- W. L. King, Refinery Lab.
- C. W. Lorenz, Distilling
- O. E. Lotter, Eng. Field
- M. R. Lewis, Dispatching
- D. M. McCracken, Eng. Field
- C. H. Merkel, Eng. Field
- F. J. Merkel, Aromatics
- R. K. Monaghan, Exper. Lab.
- C. L. Morrow, Eng. Field
- F. J. Mulconry, Eng. Field
- C. E. Nisinger, Eng. Field
- V. E. Oehler, Ther. Cracking
- M. E. Oldham, Eng. Field
- W. C. Perkins, Eng. Field
- A. G. Rahn, Eng. Field
- L. F. Rich, Refinery Lab
- L. Sanvi, Eng. Field
- H. W. Sittner Jr., Eng. Field
- L. D. Skeldon, Ther. Cracking
- H. V. Smith, Eng. Field
- J. W. Southard, Eng. Field
- G. Spears, Eng. Field
- W. H. Suhre, Research Lab
- E. L. Swinney, Eng. Field
- H. C. Tomevi, Eng. Field
- T. K. Turpin, Eng. Field
- A. W. Vogt, Eng. Field
- R. Weigel, Eng. Field
- I. V. Young, Utilities
- V. Zalders, Eng. Field

### 15 Years



O. M. Lindquist  
Eng. Field  
25 Years

L. R. Mearsch  
Eng. Field  
25 Years

T. R. Weeke  
Eng. Field  
25 Years

### 10 Years

- A. A. Bracht, Eng. Field
- D. J. Filippini, Lube Oils
- N. L. Hubbard, Eng. Field
- C. W. Jones, Eng. Field
- E. V. Kepner, Research Lab
- L. J. Mazely, Refinery Lab.
- J. Kolesar, Eng. Field
- R. J. MacDonald, Eng. Field
- R. K. Purcell, Eng. Field
- H. Ratner, Research Lab

- P. E. Smith, Eng. Field
- J. J. Spudich Jr., Eng. Field
- T. E. Stephens, Eng. Field
- T. C. Tallman, Eng. Field
- J. H. Thomas Jr., Econ. & Sched.
- J. W. Tryon, Eng. Services
- H. Vlasich, Eng. Field
- L. S. Welch, Eng. Field
- J. F. Wickey, Research Lab.
- L. Zanter, Utilities

- A. W. Amrein, Utilities
- R. Becker, Purch.-Stores
- R. J. Berrey, Eng. Field
- A. T. Brooks Jr., Eng. Field
- A. R. Caldieraro, Dispatching
- J. E. Donelson, Lube Oils
- J. Dunphy, Eng. Field
- H. F. Eberhart, Lube Oils
- T. C. Graham, Administration
- J. Izsak, Aromatics
- R. H. Jackson Jr., Utilities
- N. Karcher, Eng. Field
- H. A. Kessinger, Eng. Field
- M. H. Kirchoff, Dispatching
- J. B. Lucas, Alkylation
- C. V. Mellor, Ther. Cracking
- D. D. Melton, Gas
- F. Mikolasek, Aromatics
- D. C. Moore, Distilling
- L. M. Oden, Eng. Field
- J. W. Stallings, Eng. Services
- S. R. Stimson, Eng. Services
- G. E. Strecker, Gas
- W. J. Thallman, Eng. Field
- F. V. Vloyd, Eng. Field
- F. L. Voyles, Utilities
- R. J. Wall, Technological
- D. E. Wood, Alkylation
- D. L. Worley, Aromatics
- A. C. Zike, Alkylation

# The Sports Review

## Annual SRA Golf Tourney Starts Week of August 20

The annual Shell Recreation Association golf tourney will begin the week of August 20, SRA golf officials have announced. Plans for this year's tourney are similar to arrangements of past tournaments.

No handicaps will be given, but golfers will be paired in one of four flights according to handicaps held in Premium League, Silver Shell League or Industrial League competition. One requirement for entrants in the tourney is that they must have played at least three matches in one of the three leagues and have a handicap established.

Winners of each flight in Premium League tournament play will play the flight winners from the Silver Shell League for Refinery

championships. Matches between the league winners will be 18 holes, while all others will be nine. Play will be on any course agreeable to both players, or at Cloverleaf in event of disagreement. Rules of the U.S.G.A. will be followed.

### One Week to Play

Each pairing will be allowed one week to complete the match. Tourney play starts the week of August 20, and will continue until all matches are completed. Therefore, the number of entries will have a large bearing on the date of completion. Pairings and results will be posted on the SRA bulletin boards at the Main Gate and South Gate on each Tuesday after the tourney gets under way.

## Fishermen Land Record Catches In Two Classes of SRA Contest

Shell Recreation Association fishermen have landed two record-breaking catches so far in the eighth annual SRA Fishing Contest, reports Contest Chairman Herman Redenbarger, Tool Room.

Electrician W. J. Autery recently landed a 7-pound, 3 1/2-ounce bass to set a new record in that division of the contest, and Pipefitter Jack Williams set a new SRA contest record with a 1-pound, 4-ounce bluegill. Contest officials expect them to be hard to beat out for the grand prizes in this year's contest.

Both fish were caught locally, the bass in Autery's own farm pond near Alhambra and the bluegill in Gillespie Lake. Both fishing spots are accessible to SRA members.

Entries in the contest must be caught within 125 miles of the Refinery. SRA members may keep abreast of current contest standings by watching the contest bulletin board in the north room of the Cafeteria, where contest entries are kept on display.

## Electricians Win First Half Flag in Corkball League

First half competition in the Refinery Corkball League ended in early July with the Electricians leading the league.

The Electricians had nine points. Dispatching and Aromatics finished in a tie for second and third places with seven points each. Refinery Lab corkballers were fourth with four points, the Cast-Offs were fifth with three points and Experimental Lab was last with none.

## Lab Cast-Offs Win Refinery Bowling Title

The Refinery Lab Cast-Offs were winners of the 1961-62 Refinery bowling championship, winning three of four games in a best-three-of-five roll-off series with Dispatching of the Premium League. The Cast-Offs were the Super Shell League entry in the roll-offs, held during June at the Bowl Inn alleys in East Alton.

The Cast-Offs lost the first game of the championship series, 1,033 pins to 989. But they bounced back to take the next three in a row by scores of 980 to 953, 1,074 to 1,044 and 1,034 to 947. Pin totals for the four game series were 4,077 for the Cast-Offs and 3,980 for Dispatching, which for the second year in a row missed winning the Refinery championship in the last series of the roll-offs.

High single game for the series was rolled by Morris Clayton of the Cast-Offs, who knocked over 235 pins. Clayton led his team in the roll-offs with an 808 total score for the four game series. High total score for the roll-offs was an 861 series posted by Dick Downer of the Dispatching team, who rolled games of 227, 201, 228 and 205.

Other Cast-Offs bowlers and their total scores for the championship series were John Jatcko with 739, Jim Hammond with 736, Larry Nance with 703 and Carl Benefiel with 615. Other Dispatching bowlers and their scores were Dave Patton with 702, Earl McGinnis with 684, Robert Garner with 794 and Kenneth Zumwalt with 738.

The Cast-Offs were first half winners in their league, Super Shell, and reached the roll-offs by taking the league title from the second half winners. In the first game of the championship roll-offs, they beat the Research Rejects of the Aero Shell League, 1,030 pins to 961.



REFINERY BOWLING CHAMPIONS of the 1961-62 bowling season were the Refinery Lab Cast-Offs, shown here after winning the championship roll-off from Dispatching bowlers. From the left in front are Morris Clayton, John Jatcko, Jim Hammond, Larry Nance and Carl Benefiel. From the left in back are Bill Brodley, Jim Paterson, Hub Turley and Bill Johnson. Absent when this photo was taken was Don Becker. The Cast-Offs won the championship title in the Refinery's Super Shell League to earn the right to compete in the roll-offs for the Refinery championship.

Dispatching, the Premium League entry in the roll-offs, won the first and second half titles in that league and in the first portion of the championship roll-offs eliminated the Odd Balls of the Rotella League, 2,938 pins to 2,776.

Treating bowlers of the X-100 League were the first team eliminated in the roll-offs. Entries

from all five leagues bowled a three-game series, and the low scoring team of the three was eliminated. Treating bowlers rolled a 2,842-pin series, and were nosed out by 11 pins when the Cast-Offs bowled 2,853. In that event, the Rejects scored 2,971, the Odd Balls 2,898 and Dispatching 3,121.

## Filming Under Way on 1963 Shell TV Golfing Programs

Filming has begun on the second 11-program television series, "Shell's Wonderful World of Golf." The new series will appear next year in color over the nationwide NBC network. This year's series was shown in black-and-white over the CBS network.

The first show of the new series was filmed recently at Sweden's historic Halmstad Golf Club. It features a match between Doug Sanders, well-known U. S. profes-

sional golfer, and Arne Werkell, a Swedish champion.

The remaining matches of the new series will be filmed at other golf courses in Europe, the Orient, and North and South America. They will be narrated by Gene Sarazen, the veteran U. S. professional whose commentaries for the first series won praise from the golfing world.

The telecasts will appear on Sunday afternoons beginning January 20, 1963.

## Lady Bowlers Begin Action on August 30

The Shell Ladies' Bowling League will begin 1962-63 season pin action at the Bowl-Inn alleys in East Alton on Thursday night, August 30.

League officials report a number of bowlers are needed to fill vacancies in the league. Shell women employees who are SRA members, wives of SRA members or daughters of members are invited to contact Mrs. Jeanette Major, CLinton 4-0284, and they will be placed on a team.

The league bowls each Thursday evening at 6:30 o'clock.

Don't Forget:

## SRA Family Picnic

Sunday, September 9  
Kendall Hill

## SHELL OIL COMPANY Wood River, Illinois

Return Requested

IS THIS CORRECT?

IF NOT, NOTIFY  
YOUR SUPERVISOR:

Sec. 34.66 P.L.&R.  
U. S. POSTAGE  
PAID  
Edwardsville, Ill.  
Permit No. 25

## COMING EVENTS

### SEPTEMBER

Sunday, September 9 — Shell Recreation Association family picnic, Kendall Hill.

Tuesday, Wednesday and Thursday, September 11, 12 and 13—American Red Cross Bloodmobile visit for Refinery employees, Roxana Community Center Building.

Thursday, September 13 — Shell Service Recognition Dinner, Hotel Stratford, Alton.

Saturday, September 15 — Research Lab Club family barbecue, Kendall Hill.

Tuesday, September 18—Shell Club dinner meeting.



Zeis

Saturday Evening Post

"Oh, good—you're bathing the dog!"

Reprinted by special permission of The Saturday Evening Post.

© by The Curtis Publishing Company.