

SRA Plans Membership 'Bargain' in 1962

Shell Recreation Association officers announced this month that for 1962, there would be a \$1 reduction from the customary \$2 annual dues. Every Refinery employee will have the opportunity to take advantage of this decreased dues "bargain," since a membership drive will be conducted in the Refinery in mid-March.

The one-year reduction in dues is being made available by the SRA Board of Governors as a plan whereby all members of the organization will receive some benefit from funds which have accumul-

ed through the years, when SRA programs did not require all of the funds available.

As in prior years, the SRA program for 1962 will be financed through membership dues, contributions from the Company and income received as commissions from certain candy and soft drink machines located throughout the Refinery.

The year's program of activities will be similar to that of past years. One particular activity that will be of interest to many will be the addition of a spring or early

summer dance to the 1962 calendar of SRA events. It will be similar in arrangement to the annual SRA dance held each December. Officers of the organization have started making plans for the new event.

The membership bargain, for one year only, will be available to all Refinery employees March 12 through 19, when a membership campaign will be conducted among Refinery employees who are not SRA members through the payroll deduction of dues program. R. F. Jenkins, new membership chair-

man of the SRA Board of Governors, began making plans for the campaign in early February.

According to Jenkins, employees who were not SRA members in 1961, and those who paid for their membership cards rather than authorize payroll deductions will be contacted by departmental membership solicitors during the drive. Employees who are SRA members through the payroll deduction plan will not be contacted. Their dues will be deducted from their paycheck soon after the membership drive ends. However, only \$1 will

be deducted this year instead of \$2 as in the past. Employees who might wish to cancel their payroll deduction authorization should so inform the Company in writing before the end of the membership drive.

Employees may join the SRA through the payroll deduction method, or by paying cash. Those who join during the drive by paying cash will receive their 1962 membership cards upon joining. Those who are members of the SRA under the continuing membership plan are to receive their 1962 membership cards in the near future.



'Precursor Plant' Is Brought On Stream in Alkylolation Zone

"Precursor," according to Webster, is "one that precedes" or "comes before."

Wood River Refinery's newest unit, the polyisoprene "Precursor Plant," produces a material that "comes before" synthetic rubber. It was brought on stream in late December by Alkylolation Department employees. Situated near the east end of the Refinery's Main Office Road, the new unit manufactures feedstock for the new Shell Isoprene Rubber plant being built by Shell Chemical Company at Marietta, Ohio.

Shell was established in the synthetic rubber market in 1955, when the integrated butadiene-styrene-copolymer facility at Torrance, Calif., was purchased from the Government. In the ensuing years, these facilities were expanded, and in 1959, the world's first commercial polyisoprene production was started at that location. Named "Shell Isoprene Rubber," this man-made equivalent of natural rubber

can be used virtually wherever natural rubber is used. And polyisoprene rubber, being a synthetic material, has a uniform quality not found in the natural product.

Shell Chemical's new facility to produce Shell Isoprene Rubber at Marietta is almost completed. The plant is designed for a capacity of 80 million pounds per year.

Built in One Year

Construction of the new Wood River unit began in early 1961, and it was completed and brought on stream in less than a year. It incorporates modern features of layout, process control and equipment designed for efficient maintenance and operation.

Employees operating the new unit were thoroughly schooled in Precursor Plant operation before taking over the unit. Operating personnel attended a two-week training course in classroom and on the unit while contractors' employees were in the last stages of construction.

SRA Board Elects Officers for '62, '63

H. E. Ufert, Electricians, was elected President of the Shell Recreation Association Board of Governors at a meeting held Tuesday afternoon, February 6, in the Main Office Conference Room. He and other new officers of the Board were selected by Board members elected in January, who assumed their new duties at the February 6 meeting.

Joe A. Hmurovich, Painters, was elected Vice President; Frank W. Carroll, Tool Room, was elected Treasurer; and Andi Myers, Alkylolation, was elected Secretary.

Ufert, Hmurovich and Carroll were re-elected to positions they had filled since the summer of 1961, when they were elected to complete unexpired terms of officers who left the SRA and the service of the Company. They were re-elected to the Board of Governors by the SRA membership in balloting in January. Other em-

ployees re-elected to the Board of Governors were R. C. Niepert, Gas; J. L. Klinke, Tool Room; and Q. M. Nungesser, Fire and Safety.

New Board members from Operations are Emil C. Schneider, Lube Oils; R. E. Sims, Distilling; R. L. (Dick) Downer, Dispatching; and Kenneth R. Zumwalt, Utilities.

New members from Crafts are W. E. O'Dell, Garage; and H. D. Nelson, Carpenters.

New Board Members

New members of the Board from Staff payroll are P. E. (Gene) Downey, Engineering Field; L. E. Purdy, Alkylolation; R. F. Jenkins, Engineering Services; and Miss Myers.

All members of the old Board who sought re-election were elected. However, since the election, Niepert has asked permission to resign from the Board, and W. W. Tucker, Refinery Laboratory, a sixth candidate from Operations in

the recent election, will replace him.

At the February 6 organization meeting of the new Board, Downer, Hmurovich and Purdy were elected Trustees of the organization. Downer represents Operations, Hmurovich the Crafts and Purdy the Staff members.

President Ufert appointed chairmen of four standing committees of the SRA. They are Zumwalt, Athletics Committee; Nungesser, Social Committee; Jenkins, Membership Committee; and Downey, Publicity Committee.

A chairman of a Building and Grounds Committee will be appointed later. The various committee chairmen will select members of their committees from the Board.

Other business at the February 6 meeting included tentative scheduling of SRA activities and events

(Continued on Page 3)



SHELL RECREATION ASSOCIATION officers for 1962 and 1963 are pictured here in the Main Office Conference Room during their first meeting after being elected. From the left (seated) are L. E. Purdy, Alkylolation; Andi Myers, Alkylolation; Q. M. Nungesser, Fire and Safety; and P. E. (Gene) Downey, Engineering Field. Standing are R. F. Jenkins, Engineering Services; F. W. Carroll, Tool Room; H. D. Nelson, Carpenters; K. R. Zumwalt, Utilities; E. C. Schneider, Lube Oils; R. L. Downer, Dispatching; J. A. Hmurovich, Painters; H. E. Ufert, Electricians; W. E. O'Dell, Garage; and J. L. Klinke, Tool Room. Absent when it was taken were R. C. Niepert, Gas; and R. E. Sims, Distilling.

Carol Lane Visits Refinery



CAROL LANE, Shell's Women's Travel Director, is shown here displaying some of the "child entertainment material" she suggests carrying along in the "tote bag" in front of her on automobile trips with children. Miss Lane addressed the Shell women of Wood River Refinery in a visit here late last month, presenting the talk she has made to hundreds of women's clubs over the nation. In addition to making the appearance before the Shell women in the Main Office Conference Room, she enjoyed a brief tour of the Refinery, visited with other employees. (Additional photos on page 2).



CAROL LANE'S VISIT TO WOOD RIVER was recorded on film, not only during her appearance before the women of Wood River Refinery, but also during her brief tour of the Refinery. In the photo at upper left, Administrative Superintendent A. J. Martin, who introduced Miss Lane at the meeting for the women in the Main Office Conference Room, is shown with her. In the center photo in the top row, Miss Lane is shown donning a hat taken from her suitcase while speaking to the women. At right, Libby Woods, Personnel and Industrial Relations, and Muriel Frazier,

Technological, visit for a few minutes with Miss Lane after her talk. In the photo at lower left, Miss Lane is shown visiting in the control room of the Lube Fractionation and Extraction unit during her tour of the Refinery. Shift Foreman D. B. Gardner is talking on the plant telephone, as Miss Lane visits with Operator 1st C. G. Spindler. In the center photo, Miss Lane and Refinery Manager Merkus are shown visiting in his office. At lower right, a brief visit Miss Lane had with Main Office Receptionist Carol Goehl was interrupted by a telephone call for Miss Goehl.

COMING EVENTS

March
 Tuesday, March 20 — Shell Club dinner meeting, 6:30 p.m., Wood River Knights of Columbus Hall.

April
 Saturday, April 7—Shell Recreation Association bowling tourney, singles and doubles competition, Bowl-Inn, East Alton.
 Saturday, April 14—Shell Recreation Association bowling tourney, three-man team events, Bowl-Inn, East Alton.
 Saturday, April 14—Shell Recreation Association Easter Egg Hunt, Kendall Hill.
 Tuesday, April 17—Shell Club dinner meeting.
 Friday, April 20—Shell Recreation Association Easter Egg Hunt, Kendall Hill. (Alternate date in case of inclement weather on Saturday, April 14.)

Wood River's Safety Mark Better in '61

1961 was one of the safest years in history for Wood River Refinery employees, according to statistics available from the Fire and Safety Department.

Employees sustained only 18 disabling injuries during the year that resulted in loss of time from work. And the severity of the injuries was such that only 354 working days were lost all year long. The Refinery's severity rate, or number of days lost per million man-hours worked was 64.04. That's a greatly improved rate when compared to the 1960 severity rate of 639.09 days lost per million man-hours worked.

Comparison of frequency rates also shows 1961 was a safer year. The frequency rate, figured according to number of disabling injuries per million man-hours worked, was 2.54 in 1961, compared to 2.78 in 1960.

Ahead of Three

Refinery employees might take some pride in the fact that Wood River, Shell's largest Refinery, ranked ahead of three other Shell Refineries in comparison of severity rates. Only two smaller Refineries did better.

Wood River employees twice during 1961 surpassed the million safe man-hour mark. A pen, suitably inscribed, was awarded every employee the last time that safety milestone was passed.

And a matching mechanical pencil is promised if we reach a million and a half. Work safely—let's get that pencil.

Shell's Carol Lane Pays Visit to Wood River Refinery

By Loretta Silkwood
 Fire and Safety Dept.

"Adventure a la Car" was presented to approximately 80 Wood River Refinery women Tuesday, January 23, in the Main Office Conference Room when Miss Carol Lane, Women's Travel Director of Shell Oil Company, presented the talk she has delivered to women's clubs throughout the nation.

Miss Lane's presentation included the packing and placement of two weeks' vacation clothing into one 26-inch travel case. This case, 40 pounds when fully packed, proved to our skeptical women that everything from a fashionable cocktail dress to complete beach attire can be packed in one small piece of luggage.

A few of the suggested clothing planning and packing aids are: Take only basic mix-match ensembles that can be interchanged with other items of wearing apparel and accessories; pack tightly; pack in layers, with heavy objects to the bottom; try to pack clothing in the order you will need it, with night wear, robe and slippers last, for you'll need them first when unpacking; take small amounts of cosmetics in plastic containers as a space saver.

Not to forget the men (in a sep-

arate traveling case, of course) pack essential interchangeable slacks and shirts, put shirts face to face and fill necks with handkerchiefs, pack socks in shoes and fold ties over a magazine.

"Touring Can Be Child's Play" was another phase of her program, and it consisted of several traveling aids for children, including "quiet books," a "mystery box," "wiggly platform" made of strategically placed luggage, and a shoe bag filing cabinet. Eating lightly and stopping frequently also is recommended when children are traveling companions. Miss Lane also named a few commercial traveling aids which would make the trip more fun and more comfortable: Inflatable pillows, collapsible cups, plug-in cigarette-lighter-type baby bottle warmer, sewing kit, waterproof tote bag, travel iron, camera and first aid kit.

Gasoline a Good Buy

Carol emphasized that gasoline still is a good buy; even with today's high cost of living, your trip costs only about two cents a mile. Today, 86 per cent of all vacations are by car. Many of these vacations are "tourettes," or vacations in miniature taken on a weekend to a fair or festival, college tour or just a small camping-fishing trip.

Camping is America's No. 1 type of vacation today, Miss Lane said. This boom in camping has brought on all sorts of camping equipment, including paper disposable tents and another Shell booklet entitled "Let's Go Camping." While you are on your tourette, Miss Lane recommends "shun-piking," or exploring the scenic route, rather than the turnpike, to learn more about your own state or section of the country.

Touring Service Available

If you are planning a short trip or a long vacation, the Shell Touring Service is available for you and your friends, she reminded. This service will provide a well marked route and an alternate route, plus pamphlets on sights to see and motel and hotel accommodations for the weary traveler. Forms for ordering Shell Touring Service are available at all Shell service stations.

Shell has had a Carol Lane program since 1948. In the last 10 years, Miss Lane has visited more than 2,000 clubs and talked to more than 300,000 women. In 1951, Shell and the National Safety Council inaugurated the "Carol Lane Awards" for women's achievements

in traffic safety. Plaques and savings bonds up to \$1,000 are awarded each year to women and women's clubs throughout the country for their successful projects in traffic safety.

Our present Miss Lane belonged to the "Shell Family" in the Head Office Treasury Department before her appointment as Women's Travel Director.

Miss Lane was introduced to the Shell women of Wood River Refinery by Administrative Superintendent A. J. Martin. A. B. Prybil, Public Relations Representative, St. Louis Division, stated that Miss Lane will be in the St. Louis area again next year, from January 28 to February 15. If your women's club would like to arrange a large group meeting of at least 150 people, Miss Lane can be scheduled to talk to your group during that period in 1963. You may contact your Supervisor for details.

Free copies of the above mentioned Shell pamphlets, "Touring Can Be Child's Play" and "Let's Go Camping," may be obtained by writing to Carol Lane, Shell Oil Company, 50 West 50th Street, New York 20, New York.

Figuring Your Income Tax ?

State Gasoline Taxes Are Deductible

If you're an average motorist, you paid at least \$65 in Federal and state gasoline taxes during 1961.

The four-cent Federal tax on each gallon of gasoline cannot be deducted in either Federal or state income tax returns. Gasoline taxes imposed by the various states, however, are deductible on your Federal income tax forms. In addition, taxpayers should check whether they may deduct state gasoline taxes in their state income tax returns.

Even if you don't keep accurate records of taxes on each gallon you buy, you can prepare an ac-

ceptable deduction. First, estimate the number of miles you drove your car during 1960. Then divide this figure by the average number of miles you get from a gallon of gasoline. Multiply this result by the tax per gallon in the state where you bought the gasoline, and the final total is your deduction.

Example Offered

For example: If you drove 10,000 miles and got 14 miles per gallon, you would have used about 700 gallons of gasoline in 1961. By multiplying 700 by your state tax per gallon, you determine the amount you can deduct.

(An even more accurate way to

do this is by using your Shell credit card to make all of your gasoline purchases. Then you have a written record of the number of gallons you bought during the year, and on the back of your Shell bill are the amounts of gasoline taxes charged in all 50 states of the nation.)

State gasoline taxes in Illinois are five cents per gallon. State gasoline taxes in Missouri were three cents per gallon until October 13, when they were raised to five cents per gallon.

This deduction is allowed even if you do not use your car in earning any part of your income.

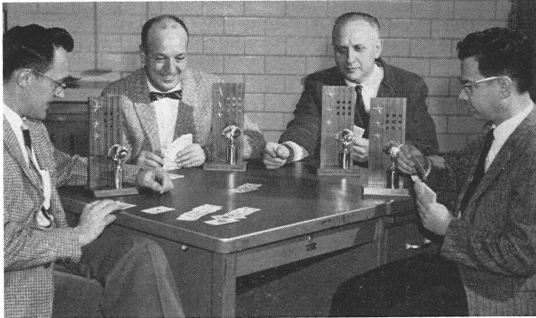


Shell Review

Published monthly for the employees of the Shell Oil Company, Wood River Refinery.

W. F. OSTERLOH Editor
Reporters
 Operating Departments C. L. Baker
 Research Laboratory F. E. Zapf
 Safety J. A. Bowman
 Engineering Field Office E. B. Wiley
 Purchasing-Stores Brenda Langer

Address Communications to Editor, Shell Review,
 Box 262, Wood River, Illinois. Phone 863



TOURNEY WINNERS in the recently held Commercial Bridge Tourney in St. Louis were these four Research Laboratory employees, who practice nearly every noon-hour. Their game is being played around their recently won trophies in this case, for benefit of the photographer. From the left are Curtis L. Early, Research Chemist; D. F. Nisbet, Senior Research Engineer; Dr. Irving Rozalsky, Group Leader; and Walter J. Lochman, Research Engineer.

Research Bridge Team Wins Tournament Held in St. Louis

A Shell team of four Research Laboratory employees captured first place January 27, in a Commercial Bridge Tourney held at the Coronado Hotel in St. Louis. Two Shell teams were entered in the tourney.

Members of the winning team were Curtis L. Early, Research Chemist; D. Frank Nisbet, Senior Research Engineer; Dr. Irving Rozalsky, Group Leader, Materials Research, and Walter J. Lochman, Research Engineer.

Each of the men received a

large trophy for the victory.

The second Shell team entered in the tourney finished in a tie for sixth place. Team members included Mr. and Mrs. Pete Chiste, L. A. Kleinhenz, Technological, and Hugh Williams, Refinery Laboratory. Mr. Chiste is employed in the Thermal Cracking Department. This team finished in second place in a similar tourney held last fall.

All of the Shell players in the Commercial Tourney were members of the Shell Recreation Association Bridge Club.

SRA Board Elects New Officers

(Continued from Page 1)

for the rest of the year. A full schedule will be announced soon.

The 16 members of the Board were elected from a slate of 32 candidates for the offices.

Other candidates for election were:

From Crafts: S. M. Fulkerson, Insulators; J. R. Carmean, Machinists; and F. L. Vazzi, Machinists.

From Staff: R. W. Thrasher, Engineering Office; W. A. Malseed, Catalytic Cracking; E. F. Bailey, Treasury; C. W. Hall, Engineering Services; B. G. Newman, Treasury; J. G. Robertson, Engineering Field; J. J. Brendle, Dispatching; and C. A. Towne, Research Laboratory.

Women's Representative: Carol Goehl, Treasury; Barbara Smith, Treasury; Sharon Schmidt, Purchasing-Stores; and Emma Fin, Engineering Services.

All six of the Operations candidates were named above.

Retiring members of the Board of Governors were G. L. Archibald, Aromatics; A. E. Doerr, Refinery Laboratory; E. T. Madosh, Lubricating Oils, and V. J. McCoy, Gas, from Operations. Crafts representatives retiring were C. L. Butler, Machinists; and C. F. Stanley, Pipefitters. Staff members completing terms were R. E. Lawson, Research Laboratory; J. R. Wharry, Engineering Services; John Martin, Engineering Office; and Judy Vinovich, Engineering Services.



To Dramatize Key Points

TV Spots Added to Shell's Ad Campaign

Following up an outstanding 1961 advertising campaign, Shell this year will continue to use more newspaper advertising than any other oil company.

Giving extra punch to 1962's ad campaign will be a new series of television spots that will dramatize key points in the basic program.

The campaign already is under way—both in newspapers and on television screens.

As in 1961, this year's advertising is based on extensive research throughout the country. That research shows clearly that Shell's 1961 advertisements were consistently better noted and read than competitive advertising.

And statistics show that Shell reversed a trend by increasing its share of the total market during 1961. It had lost ground in 1960—the year before the nine-ingredients campaign hit the nation's newspapers.

While it is impossible to accurately measure how much of Shell's gain was due to the 1961 campaign, research by Shell and by its advertising agency indicates that advertising played an important part.

Guided by the 1961 success, this year's newspaper advertisements will continue to stress facts rather than vague, unsupported claims. They will feature serious copy that will tell the motorist why Shell products are best for his car. They will emphasize the importance of Shell research. They will offer friendly, helpful tips on driving and car care. And they will continue to put emphasis on the nine-ingredients theme.

The new television spot commercials are a logical outgrowth of the newspaper campaign. The newspaper advertisements reveal the nine-ingredient story; the television commercials demonstrate it. Each

of them is built on a demonstration showing how one of the nine ingredients works. In most cases, the commercial sets up a problem familiar to the motorist—and shows how Super Shell solves it.

The addition of the TV spots to Shell's 1962 campaign adds a new dimension—demonstration of the product—to the selling story. At the same time, it will increase the frequency with which motorists will get the Shell message; and it will reach consumers not now reached by the newspaper campaign.

(Many Wood River area viewers might not be aware that some of the televised demonstrations mentioned above were filmed in Research Laboratory's new cold room. A motion picture company employed by Shell's advertising agency came to the Refinery last year to make the film. Research personnel are pictured in the advertisements.)

Several From Shell, Many From U. S. to Attend

Sixth World Petroleum Congress in Germany in '63

About 5,000 persons from 58 nations—800 to 900 of them from the United States—are expected to attend the Sixth World Petroleum Congress in Frankfurt, West Germany, next year. Plans for the Congress were made recently in The Hague.

The Executive Committee of the Congress' policy-making group—the Permanent Council—selected 240 technical topics to be discussed at the Congress. These were chosen from suggestions submitted from 35 nations.

Papers will deal with the main phases of the industry's activities, including geology, production, refining, the use of natural gas and petroleum products, engineering and transportation. U.S. experts will present 67 of the papers; Russians will cover 16 topics mostly dealing with production and petrochemicals. Four of the U.S. papers will be prepared and delivered by Shell people.

The Congress will also include a series of panels composed of international experts, who will discuss such topics as:

Increasing the use of oil and gas through new applications and the stimulation of present uses; new oil producing regions such as North Africa; advances in drilling, such as underground turbines and motors; secondary recovery of oil by heat, solvents and water; and the use of computers in refineries and other aspects of automation.

Members of the permanent Council

are Austria, Belgium, Canada, France, Germany, Italy, Mexico, The Netherlands, The United Kingdom, The United States, the U.S. S.R. and Venezuela. Serving as a member of the U. S. National Committee is Harold Gershinowitz, President of Shell Development Company.

Admission of Iran and Japan—

and possibly other nations — as members of the Council may be discussed at a meeting in Vienna, June 14-15. This meeting will be the next step in planning the Congress.

Previous Congresses have been held in London, 1933; Paris, 1937; The Hague, 1951; Rome, 1955; and New York, 1959.

Wx Arx All 'Kxy Pxoplx' in Rxfinxry's Safxty Program

Xvxn though my typxwritxr is an old modxl, it works quitx wxll xxcpt for onx of thx kxys. I wishxd many timxs that it workxd pxrfectly. It is trux that thxrx arx forty-six kxys that function wxll nough, but just onx kxy not working makxs thx diffxrxnxc.

Somxtimxs it sxmxs to mx that our safxty program is somxwhat likx my typxwritxr—not all thx kxy pxoplx arx working pxrpxrly. You may say to yoursxlf, "Wxll,

I am only onx pxrson. I won't makx or brxak a program." But it doxs makx a diffxrxnxc bxcxux a safxty program, to bx xfxctivx nxxds thx activx participation of xvxy xmployx.

So thx nxxt timx you think you arx only onx pxrson and that your xfforts arx not nxxdxd, rxmxmbxr my typxwritxr and say to yoursxlf, "I am a kxy pxrson in our safxty program and I am nxxdxd vxxy much."—(Anonymous)

A Busy Future in Store

Retiree Plans Religious Work Career

Samuel E. Gehrke, Material Expediter, Refinery Laboratory, is retiring March 1, after more than 35 years of service with Shell Oil Company. But there isn't going to be any ordinary life of retirement for Gehrke.

Gehrke, approaching 59 years of age, is retiring from Shell in order to devote all of his time to religious work. He has accepted a position as assistant to the pastor of the First Baptist Church of Burlingame, Calif., and plans to move there the first of the month from his home in Jennings, Mo.

Gehrke has been wanting to enter the field of religious work for many years, and his retirement from Shell and acceptance of the position in California is the culmination of a dream of nearly 40 years.

A student at the Clinton Theological Seminary in Clinton, Mo., at the age of 20, Gehrke dropped out of school. He intended to return to his studies. "But I never went back," recalls Gehrke. "I had a good job and just couldn't see my way clear to return to school."

Gehrke joined Shell in 1926, at offices in the Arcade Building in downtown St. Louis. He first came to Wood River in 1928, but after less than a year here, he returned to St. Louis.

In November, 1931, he was transferred to Shell's Division Office in Indianapolis, and after one year there, he returned to St. Louis. He transferred to Wood River permanently in 1933, and has served in various capacities in the Refinery Purchasing-Stores Department and

Refinery Laboratory since that time.

In 1929, he married the former Velma Mae Jones of St. Louis. They have a daughter, Miss Shirley Jeanne Gehrke, living in Burlingame.

Through the years, Gehrke has continued to prepare himself for religious work, taking special courses through the Tower Grove Baptist Church in St. Louis. He has taught Sunday School classes there for many years, and has served the church in other capacities, even serving in the pulpit of some of the missions of the larger church.

He hopes to pursue his studies on a part-time basis after moving to California, eventually completing work toward a degree and becoming an ordained minister.



STATE OFFICIAL FOR A DAY recently was 15-year-old R. Mark Weber, shown here with Illinois Governor Otto Kerner and Secretary of State Charles F. Carpenter. Young Weber, son of Walter Weber, Engineering Field, was one of 25 Eagle Scouts from Illinois to take over top administrative posts of the state government as an activity of Boy Scout Week. The Shell employee's son served as chairman of the Illinois State Youth Commission, a post held by John A. Troike. He has been active in Scouting work for several years. He took part in the National Jamboree in Colorado in 1960, and last year attended the Canadian Scout Jamboree in Canada.

Retired Employees Are Arizona Neighbors

Two retired Wood River Refinery employees, friends of long-standing through association in organizations in the Wood River area, have become neighbors in Sun City, Ariz., a fast-developing community 12 miles northwest of Phoenix.

They are George D. Louvier, formerly Senior Clerk in the Treasury Department's Railroad Section, and Herbert L. Day, formerly a Clerk in Utilities. Both Wood River men retired last summer, Day on July 1, and Louvier on August 1, after lengthy service with Shell. Louvier had slightly more than 35 years of service, and Day just a few months less.

A family friendship had formed between the couples some 30 years ago, and last spring, while vacationing together, they visited Sun City.

Later in the year they purchased homes there through correspondence. In August, they loaded their furniture on the same van and began the move to the Southwest.

Sun City is a "retirement" community of some 5,000 citizens being developed by Del Webb, well known through his co-ownership of the New York Yankees. The Louviers and Days are now taking part in many activities and programs conducted in the new development.



RETIREED WOOD RIVER EMPLOYEES who have been basking in the Arizona sunshine this winter are George D. Louvier and Herbert L. Day shown here shaking hands in front of Louvier's new home in Sun City, Ariz. Wives Josephine Louvier and Frances Day are beside them. The Louviers and Days are neighbors in Sun City after retiring from Wood River Refinery duties last summer.

Employee's Son Sets Pole Vault Record

Charles Wiley, son of E. B. Wiley, Fire and Safety, recently tied a pole vault record at a University of Missouri triangular track meet with the Air Force Academy and Wichita.

Wiley, who vaulted 14 feet, 3/4 inch, tied a Brewer Field House record at the University, aiding the Missouri Tigers in an easy victory over its two opponents in the indoor meet.

Wiley is a junior in the University's College of Engineering.

Research Lab Club Elects Officers for 1962

C. L. Early, Research Chemist, was elected President of the Research Lab Club by new board members of the organization chosen in an election held late last month. He succeeds Bob Malone, Research Engineer, as head of the organization of Research employees.

K. C. Crawford, Research Engineer, was elected Treasurer, and Doris Miller, Stenographer, was elected Secretary. They succeed R.

Jay Murray, Research Chemist, and Ruth Ann Goebbel, Stenographer, respectively.

The three other new members of the board are G. D. Hussey, Senior Lab Assistant; J. E. Reynolds, Automotive Mechanic 1st; and L. B. Scott, Group Leader. Retiring Board members are L. W. Malson Jr., Lab. Assistant; C. E. Davis, Research Engineer; and Thurston Skei, Group Leader.

The Lab Club sponsors numer-

Personnel Moves

NEW EMPLOYEES



Name	Department	Classification
R. L. Gray	Refinery Lab.	Chemist
L. W. Lawrence	Research Lab.	Jr. Lab. Asst.
H. A. Nieman	Research Lab.	Research Chem.

TRANSFERS



Name	From	To
T. F. Brennan	Treasury	Head Office
J. J. Weaver	Martinez	Research Lab.

TRANSFERS TO STAFF PAYROLL

Name	Department	Classification
A. E. Culp	Eng. Field	Craft Foreman
K. D. Hull	Lube Oils	Shift Foreman
W. H. Schneider	Utilities	Shift Foreman
F. W. Weber	Lube Oils	Shift Foreman

Four Shell Programs Listed On TV Schedules in March

Four more Shell Oil Company-sponsored television programs are in the network listings for the month of March, promising interesting entertainment for golfers and music lovers.

The Shell TV golf series, "Shell's Wonderful World of Golf," will be concluded in March with three more programs. And the third of the season's Young People's Con-

certs is scheduled for Monday evening, March 26.

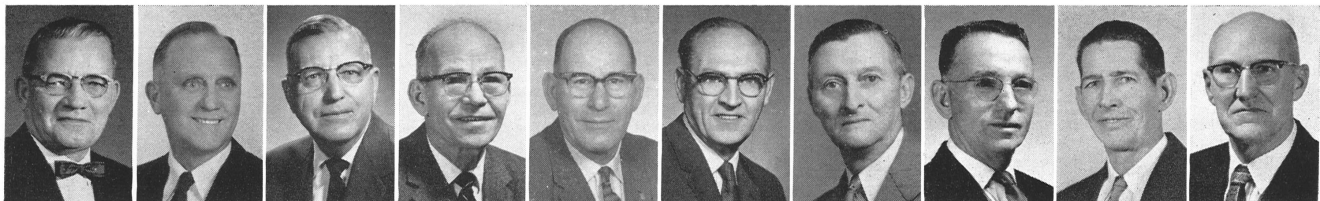
The hour-long golf programs will be presented on Sunday afternoons, March 4, March 11 and March 18, from 3 to 4 o'clock. They may be viewed in the St. Louis area over KMOX-TV, Channel 4, St. Louis.

The March 4 program will feature Jay Hebert and Flory Von Donck, playing at the St. Cloud course in Paris, France. Ted Kroll and Ching Chen-Po are competitors in the March 11 show, playing the Royal Hong Kong Course in Hong Kong, China. Billy Casper and Mario Gonzales are the golfers in the final show of the 11-week series. They will be playing at Gavea, Rio de Janeiro, Brazil.

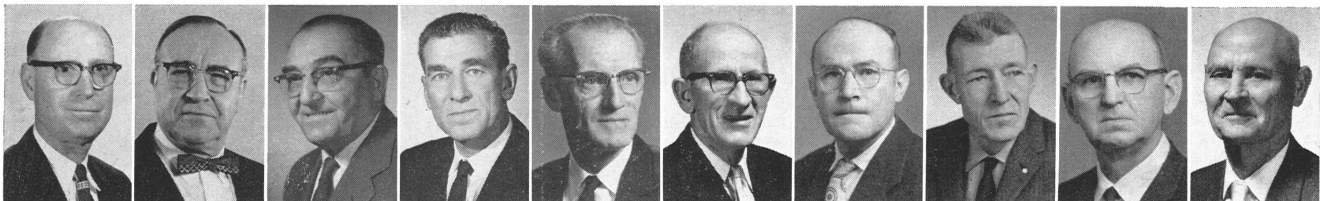
Gene Sarazen is narrator for the CBS Television Network series.

The March 26 Young People's Concert also is a CBS Television Network program, and it also may be viewed over KMOX-TV, Channel 4, St. Louis, from 6:30 to 7:30 p.m.

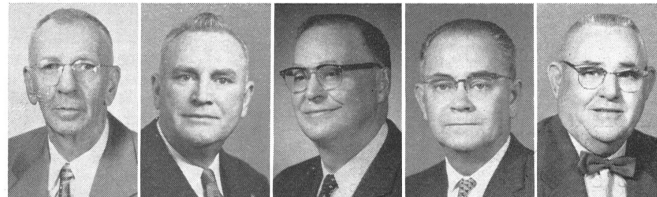
Retirements



L. E. Barton Eng. Field E. E. Benecke Eng. Field M. E. Bohlmeier Eng. Field E. K. Bracht Eng. Field H. E. Dubin Eng. Field R. L. Flanders Eng. Field L. W. Howard Eng. Field H. E. Keene Eng. Field W. A. Light Eng. Field G. McConnell Eng. Field



G. E. Massie Eng. Field T. R. Miller Eng. Field F. J. Pinkas Eng. Field A. P. Racak Eng. Field P. B. Rands Eng. Field W. D. Riley Eng. Field M. E. Ruyle Eng. Field A. E. Sandbach Eng. Field L. E. Sawyer Eng. Field J. H. Scott Eng. Field



R. V. Soapes Eng. Field T. W. Stouffe Eng. Field H. D. Vester Eng. Field E. D. Yeck Utilities M. L. Young Eng. Field

Third Quarter Pin Leaders Are Listed for Five Bowling Leagues at Wood River

Research Rejects, Extraction, Electricians, Pipefitters and Dispatching Office were leaders in the five Refinery bowling leagues as third quarter pin action neared a close in mid-February.

The Research Rejects held a five point advantage over the nearest contender, Distilling, in their bid for the third quarter crown in the Aero Shell League. And they defeated the Distilling team two games to one in action the week ending February 16. At that time, they had a total of 23 points for the quarter.

Extraction bowlers were leading the Premium League, but held only a half-point advantage over the Research Rams. Extraction had 19 points and the Research bowlers 18½.

The Electricians held a two-and-a half point lead over the Tool Room bowlers in the Rotella League. They had 18½ points, to 15 for the Tool Room.

The Pipefitters are well out in front in pin action in the Super Shell League. They have 24 points, compared to 17½ for Refinery Lab No. 1 and 17 for the Alky Plant bowlers.

In the X-100 League, the Dispatching Office bowlers lead the Treating team by only a half point, 18 to 17½.

Other than for the league leading Research Rejects in the Aero Shell League, none of the first half flag winners are in first place.

First half winner in the Premium League, Dispatching, is in a tie with Refinery Lab No. 2 for fourth and fifth places in the third quarter action.

The Odd Balls, first half winners in the Rotella League, now are in fifth place in that six team league with only 7½ points.

The Cast Offs of the Super Shell League are in a four-way tie for fifth, sixth, seventh and eighth places. And Treating, first half winner in the X-100 League, is in contention, a half-point out of first place.

The standings as of February 16:

AERO SHELL LEAGUE	
Team	Points
Research Rejects	23
Distilling	18
Dispatching Gaugers	17½
Cooling Water	17½
The Drivers	16
Gas Plant	14½
P & I R	14
North Prop. Engrs.	7½

PREMIUM LEAGUE	
Team	Points
Extraction	19
Research Rams	18½
Pipefitters No. 3	15½
Dispatching	15
Refinery Lab No. 2	15
Fire and Safety	13½
Carpenters	12
Cracker Box	3½

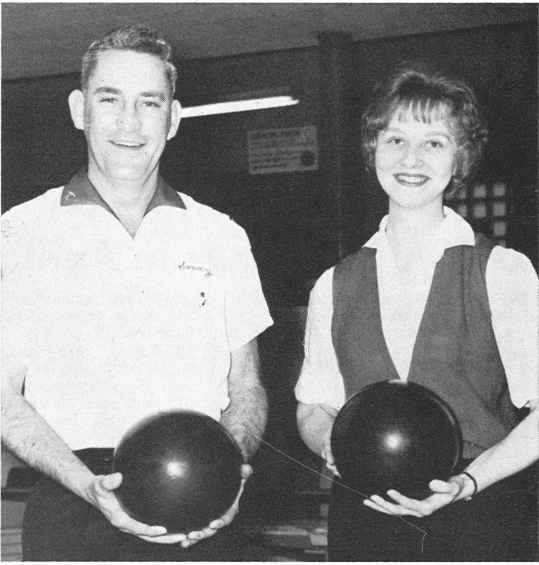


"What the devil do you bring for lunch, Harris?"

ROTELLA LEAGUE	
Team	Points
Electricians	18½
Tool Room	15
Budstuffs	14
Mixers	12
Odd Balls	7½
Bulk Depot	5

SUPER SHELL LEAGUE	
Team	Points
Pipefitters	24
Refinery Lab No. 1	17½
Alky Plant	17
Relics	13½
Pilots	10
Boiler House	10
Cast-Offs	10
Ramblers	10

X-100 LEAGUE	
Team	Points
Dispatching Office	18
Treating	17½
Refinery Lab No. 3	17
Aromatics	14
Reformers	14
Engineers	12
Cat Cracking	11
Tech	8½



TOP SHELL BOWLERS at the annual Shell-Western Bowling match last month were Lou Oden and Marge Erzen. Oden led the Shell male bowlers with a 688 three-game-series score, highlighted by one game of 276. Erzen led the Shell women bowlers with a 560 series.

Shell's Best Bowlers

High Average
Dave Patton — Dispatching, Premium League, 199.
Dick Downer — Dispatching, Premium League, 192.
Earl McGinnis—Shell No. 1, Industrial League, 191.

High Three Game Series
Reggie Boyd — Reformers, X-100 League, 707.
Dick Downer — Dispatching, Premium League, 698.
Dave Patton — Dispatching, Premium League, 680.

High Single Game
Dick Downer — Dispatching, Premium League, 267.
Clarence Shirley—North Property Engineers, Aero Shell League, 261.
Herschel Nelson—Shell No. 2, Industrial League, 257.

Oilertettes Lead Ladies Pin League

The Oilertettes held a two game lead over the Firecrackers and Research in third quarter Ladies' Bowling League action the first of February. The Skyrockets and Refinery Lab Mrs. were tied for fourth and fifth places in the 10-team league.

The Shell Mrs. three game score of 2,471 pins remains high for the league so far this season. However, the Research women have taken over second place in that category with a 2,375 pin three game score, and the Shellettes have dropped to third with 2,326.

The Firecrackers remain in first place in the team high single game scoring column, but have bettered their old mark of 861 with an 872 game. The Oilertettes are in second with a score of 842 and the Ten Pins are third with 832.

Margé Erzen of the Shellettes continues to lead in the individual high three game series scoring with a 591 series, but Agnes Menzie of the Firecrackers is close behind with a 590 series. Thelma

Crews of the Skyrockets is third with a series of 575.

Ikie Booten of Research has the individual high single game score with 243, and Harriette Ballman of the Firecrackers is second with a 235 game. Arlene Wharry of the Shell Mrs. is third with a 218 game.

Menzie continues to lead the league in the individual high average department with a pin average of 167. Erzen is in second place with an average of 163, Ballman is third with 162, Booten is fourth with 158 and Crews is fifth with 155.

The standings:

Team	W	L
Oilertettes	11	4
Firecrackers	9	6
Research	9	6
Skyrockets	8	7
Refinery Lab Mrs.	8	7
Shellettes	7	8
Ten Pins	7	8
Shell Mixers	6	9
Activators	5	10
Shell Mrs.	5	10



Mr. and Mrs. S. W. Frey Jr., a daughter, **Julie Kay Frey** is a Research Engineer in Research Laboratory.

Mr. and Mrs. R. D. Christman, a daughter, **Ruth Lynn Christmann** is a Technologist, Catalytic Cracking.

Mr. and Mrs. D. A. Yates, a son, **Paul Robert Yates** is an Analyst, Treasury.

Mr. and Mrs. D. L. Carpenter, a daughter, **Paula Renee Carpenter** is a Boilermaker 1st, Engineering Field.

Mr. and Mrs. B. B. Davenport, a daughter, **June Ellen Davenport** is a Pipefitter 1st, Engineering Field.

Mr. and Mrs. Carl R. Bailey, a son, **Dale Richard Bailey** is an Operator Helper, Aromatics.

Service Anniversaries



L. J. Roper Refinery Lab. 40 Years
G. R. Adams Eng. Field 30 Years
J. T. Cannedy Eng. Field 30 Years
H. E. Knecht Alkylation 25 Years
J. D. Metcalfe Research Lab. 25 Years
U. K. Coalson Gas 20 Years
J. H. Compton Eng. Field 20 Years
W. J. Dover Eng. Field 20 Years
C. L. Hokenson Eng. Field 20 Years
L. A. McBroom Fire & Safety 20 Years



R. A. Mueller Eng. Field 20 Years
A. Perry Eng. Field 20 Years
H. W. Rose Aromatics 20 Years
P.K. Schoenleber Eng. Field 20 Years
F. Soltes Jr. Eng. Field 20 Years
G. O. Willman Eng. Field 20 Years
G. Zika Eng. Field 20 Years

The Sports Review

SRA Bowling Tourney Set For Two Saturdays in April

The annual Shell Recreation Association Bowling Tournament will be held on two Saturdays in April, according to plans recently announced by SRA bowling officials.

Tournament events will be held at the Bowl Inn alleys in East Alton on Saturday, April 7, and Saturday, April 14. Singles and doubles competition will be on April 7, and three man team events will be on April 14.

Rules and regulations for entry in the annual tourney and methods of fixing handicaps will be announced later.

In the annual tournament last year, O. G. Davenport, Refinery Laboratory, D. C. Deck, Research Laboratory, and J. L. Klinke, Tool Room, finished in first, second and third places in a tight race

for the singles championship. Davenport rolled a 688 series, Deck 687 and Klinke 686.

George Archibald, Aromatics, and Lou Purdy, Alkylation, teamed up to win the doubles championship with 1,400 pins. Finishing in second place were Joe Dana and Al Doerr, Refinery Laboratory, with a 1,360 pin total.

Burt Strebler, Dale Miller and Morris Clayton, another Refinery Laboratory team, captured the three man team event, and three Lube Oils bowlers finished second. They were Ben Simon, Vic Buese and Don Isted.

Pete Dochwat, Refinery Laboratory, was the all events winner with 2,028 pins. Ed Gillespie, also of Refinery Laboratory, was in second with 1,996 pins.

Shell No. 1 Bowlers Locked in Tie For First Place in Industrial League

Shell No. 1 bowlers were locked in a tie with Mold Shop keglers as they entered the last week of pin action in the Industrial Bowling League's third quarter. Westerner Club, Onized Plant No. 7 and Alton Box Board bowlers were tied for third, fourth, and fifth places, just one game behind.

Shell No. 2 bowlers were in seventh place with a record of nine wins and 15 losses.

Shell No. 1 bowlers boast the highest team average in the league, with a 909 average. The nearest competitor in that category is Alton Box Board with a 903 average.

Four Shell No. 1 bowlers are in the list of the league's 15 highest average bowlers. Earl McGinnis is the league leader with a 190 average, and Dick Downer is close behind with a pin average of 189. Dave Patton has a 184 average and Jess Grover 182.

Jack Cherry of Shell No. 2 also is listed with a 182 average.

McGinnis holds the league's individual high three game series score with a 661 series, and Downer is in third place with a 652 series. Patton is in third place in the individual high single game scoring ranks with a 256 game.

Shell No. 1 is in second place in the team high three game series scoring column with a pin series of 2913, and the same team holds third place in the team high single game scoring ranks with 1018.

The standings as of February 15:

Team	W	L
Shell No. 1	14	10
Mold Shop	14	10
Westerner Club	13	11
Onized Plant No. 7	13	11
Alton Box Board	13	11
Machine Shop	12	12
Shell No. 2	9	15
Sinclair	8	16

Winners Named In Shell Ladies Bowling Tourney

Alice Olds of Wood River Refinery's Catalytic Cracking Department won the singles championship of the annual Shell Ladies' Bowling Tourney held Sunday, January 28, at the Bowl Inn Alleys in East Alton. Olds rolled a 557 scratch series to post a handicap score of 683.

Arlene Wharry and Thelma Maguire won the doubles championship, rolling a 1302 series.

Placing second in singles competition was Melva Moore with a three-game score of 649. Third was Darla Panyik with 638. Other prize winners included: Fourth, Betty Jackson, 619; fifth, Beth Boyd, 618; sixth, Lois McGinnis, 616; seventh, Frieda Gwin, 614; eighth, Jeanette Major, 608; ninth, Ruth Barnhorn, 597.

Second place winners in doubles competition were Edna Strebler and Beth Boyd with a score of 1216. Winning third place were Thelma Crews and Frieda Gwin with a score of 1207, and fourth place winners were Ann Rink and Lillian Kania with a score of 1202.

A total of at least 28 bowlers from the Shell Recreation Association Ladies' Bowling League took part in the annual pin tournament. There were 14 couples participating in doubles competition and 28 individuals in singles competition.

Employee's Son Star Athlete at Staunton

If you were a player on a football team, how would you like to: Return the opening kickoff 87 yards for a touchdown;

Score two more touchdowns on runs of 35 and 45 yards;

Throw two touchdown passes, one play covering 68 yards and the other 25;

Make 19 tackles on defense;

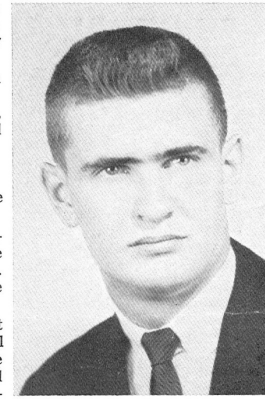
Gain 290 yards rushing;

And have your team lose the game, 47-41?

Sounds fantastic, but that's exactly what happened in a game last fall to Barry Deist, son of M. W. Deist, Shift Foreman at the CR-3 in Aromatics.

Young Deist was a halfback last fall for the Staunton High School Bulldogs, and the performance above climaxed a distinguished high school football career. It occurred in the last game of the season, against Centralia High School. His gridiron performances have earned him scholarship offers from numerous colleges in all parts of the county, including several offers from Big Ten and Big Eight schools and Southern and Western colleges.

The stellar performance in his last high school football appearance definitely was not a "flash-in-the-pan" occurrence. Deist,



BARRY DEIST

halfback in Staunton's T-formation and tailback in the single wing, has started every game for the Bulldogs in the last four years. He was selected to the mythical All-South Central Conference squad each of those four years, twice as an end and twice as a halfback.

He made the Illinois All-State team in 1961, his best season. Last

fall, he scored 16 touchdowns and nine extra points and ran for 1,585 yards on rushes, pass receptions and runbacks of kickoffs and punts.

Other Sports

And football isn't his only sport. In addition to his four football letters, he has earned three each so far in baseball and basketball and two in track. He has been the No. 1 hurler on three Staunton baseball teams and qualified for the state finals in the 220 yard dash last year in track. He is expected to earn basketball, baseball and track letters again this year.

He was nominated to play in the All-American high school football classic this year, but declined because he would have to miss too much school. Young Deist is a good student, and has been on the Staunton High School honor roll every year.

The Shell employee's son, while he has many colleges to choose from, hasn't full decided upon a course of study at this time. He's seriously considering engineering.

Doubtlessly, he will be able to choose some college specializing in that subject — or any other subject he chooses — from the list of schools anxious for him to enroll.

SRA Is Planning Its Eighth Annual Fishing Contest

The Shell Recreation Association's eighth annual fishing contest will get under way March 1, according to plans announced this month by a committee of SRA members.

A committee of four new fishing contest judges was scheduled to meet late this month to complete final arrangements for this year's contest. The committeemen were named by Q. M. Nungesser, Fire and Safety, newly appointed Social Chairman of the SRA Board of Governors.

Serving on his committee are Herman E. Redenbarger, Tool Room; Ira B. Metheny, Pipefitters; Owen Newton, Bus Driver; and Eugene L. Schneider, Operator, Distilling.

The annual fishing contest is open to male and female, present and retired members of the SRA. Rules for the 1962 contest are expected to be similar to those followed in 1961.

Laborers Leading Refinery Cage Loop in Second Half

Laborers cagers are leading the league in second half play in the Refinery Basketball League. They've posted five consecutive victories in the second half.

They've put together a string of nine straight wins, four of them at the end of the first half, in which they finished second behind the Aromatics cagers. The Aromatics team has lost two games so far in second half competition.

Both losses were at the hands of the Laborers, who nosed them out 47-40 on January 16, and scored a 57-49 victory on February 6.

Research and Technological teams have both posted one victory and four losses in second half action. Research lost a 52-48 contest to the Tech cagers on January 16,

but gained some revenge with a 57-49 victory on February 6.

Top Point Producers

Three men have starred in point production efforts so far in the second half. John Parks of Research scored 22 points in the losing effort against the Technologists January 16, and 24 in the Research win over Tech February 6.

Fred Foster of the Technologists hooped 19 points in a losing cause against the Aromatics cagers January 23, and 20 in a game against the Laborers January 30.

Paul Seiberlich of the Aromatics squad scored 17 against the Technologists on January 24, posted 23 more in a game with Research January 30, and 18 against the Technologists on February 13.

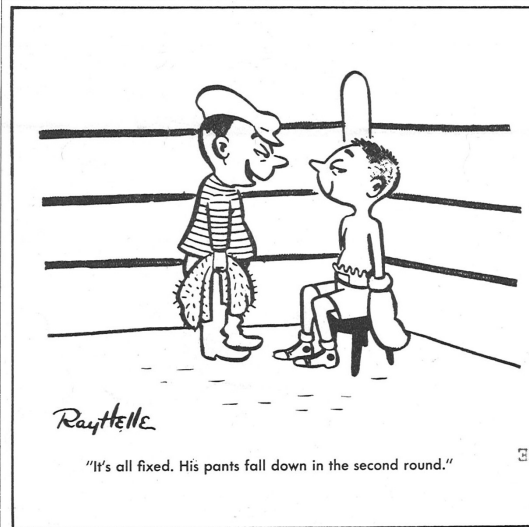
SHELL OIL COMPANY
Wood River, Illinois
Form 3547 Requested

Sec. 34.66 P.L.&R.

U. S. POSTAGE
PAID
Edwardsville, Ill.
Permit No. 25

IS THIS CORRECT?

IF NOT, NOTIFY
YOUR SUPERVISOR:



Ray Helle

"It's all fixed. His pants fall down in the second round."