



REVIEW

Wood River, Illinois

Vol. 25, No. 1

January, 1962

'61 Viewed as Busy Year At Wood River Refinery

1961 was a busy year at Wood River Refinery. A review of the many projects and activities completed here during the last 12 months show that in addition to the usual constant buzz of activity necessary to Refinery operation, there were numerous events of unusual significance.

The year 1961 saw two new units go on stream in the Refinery, new facilities completed and put in operation at Research Laboratory, highly successful Bloodmobile and United Fund drives, the passing of some important safety milestones and the usual flurry of employee activities.

Perhaps the most important single event of the year was the completion and start-up of the giant new Catalytic Reformer No. 3 in the Aromatics Department. Construction of the new unit began in 1959, and Refinery personnel brought the CR-3 on stream in May of this year. Basically like the Refinery's Platformers, the new unit uses a platinum activated catalyst in the presence of hydrogen to reform petroleum hydrocarbons. The new unit has a processing capacity of 25,000 barrels per day. Its products are used as blending components for high octane gasolines.

The second new Refinery unit to go on stream in 1961, was the Precursor Plant, at the east end of the Refinery. The new unit manufactures feedstock for a new synthetic rubber plant built by Shell Chemical Company at Marietta, Ohio. The feedstock is shipped to Marietta in railroad tank cars.

New facilities at Research Laboratory included the chassis dynamometer and a new Heating Fuels Laboratory. The chassis dynamometer is a complete "indoor highway" where Research employees can conduct a variety of automobile tests under almost any desired condition, under strict controls. Automobiles can be run for hours at desired speeds and under simulated weather conditions of all descriptions, with the vehicle never leaving the 15 by 33 foot room.

In the new Heating Fuels Laboratory, domestic heating burners are run summer and winter to keep Shell abreast of the latest in types of heating equipment and ahead of competition in the fuel oil business.

Good Safety Year

Safety-wise, Refinery employees enjoyed an excellent year. There were only 18 disabling injuries ex-

perienced during 1961, compared to 21 in 1960, and the severity rate, or number of days lost per injury, was the best ever experienced. On one occasion, Refinery personnel amassed a total of 1,323,449 man-hours without a disabling injury. Employees were rewarded for that effort with Parker T-Ball Jotter pens, suitably inscribed, and a further reward of a matching mechanical pencil is promised for reaching a million and a half safe man-hours.

Research Laboratory personnel received individual awards early in the year when they were honored for working five million consecutive man-hours without a disabling injury. They've added another safe year to their record since achieving that milestone.

Wood River Refinery was honored in March with the receipt of a Conservation Award, presented during National Wildlife Week by the Alton-Wood River Sportsmen's Club in recognition of the Company's efforts toward the abatement of stream pollution. The Refinery's effluent control system plays the major role in that program, and that system received further acclaim later in 1961, when it was cited as an example in area campaigns to deal with water pollution problems. The Refinery's waste water treating plant received mention in newspapers and on television as one of the finest industrially owned waste water treating plants in the area.

New Charity Record

In the field of charitable efforts, Wood River Refinery employees set a new record for employee donations in October, when they contributed \$21,508.20 in a Refinery-wide United Fund Drive. The previous record, \$19,052, was set in 1959.

Refinery blood donors made their contribution to charity in September, when 478 persons donated a pint of blood each during a three-day visit of the American Red Cross Bloodmobile.

An increasing number of employees and members of their families took part in employee activities during 1961.

Starting the year off in that field of endeavor on the Saturday before

(Continued on Page 2)

1961 Net Income Lower Than 1960

Consolidated net income of Shell Oil Company and all wholly-owned subsidiary companies for the year 1961 is estimated at \$140,350,000, according to Monroe E. Spaght, President. This compares with \$144,588,000 for the year 1960.

Earnings per share amounted to \$2.32 and \$2.39, respectively, based on 60,579,768 shares outstanding at December 31, 1961.



NEW SHELL CLUB OFFICERS, shown here making plans for 1962 activities, are (from the left) Howard Bratches, Personnel and Industrial Relations, Secretary; Frank Regan, Engineering Field, the new Treasurer; B. H. (Brace) Lambert, Research Laboratory, President; W. A. (Bill) Malseed, Catalytic Cracking, Vice President; and W. J. (Will) Deissinger, Engineering Services, Tail Twister. The new officers assumed their duties at the January 16, dinner meeting of the organization at the Wood River K. of C. Hall.

Lambert Elected President Of Wood River's Shell Club

B. H. (Brace) Lambert, Research Laboratory, was elected President of Wood River Refinery's Shell Club in the election held last month. He succeeds P. E. (Gene) Downey, Engineering Field, in the position.

Lambert and other new officers of the organization assumed their positions at the January 16, dinner meeting at the Knights of Columbus Hall in Wood River. They will serve through 1962.

Other new officers include W. A. Malseed, Catalytic Cracking, Vice President; Howard Bratches, Personnel and Industrial Relations, Secretary; F. M. Regan, Engineering Office, Treasurer; and W. J. Deissinger, Engineering Services, Tail Twister.

Malseed succeeds Lambert in the Vice President's post; Bratches succeeds A. J. (Tony) Calcaterra, Engineering Office; Regan succeeds Roy Roark, Purchasing Stores; and Deissinger succeeds J. E. McConnell, Engineering Services.

Shell's TV Golf Series Continues During February

Four more programs in the "Shell's Wonderful World of Golf" television series are scheduled for Sunday afternoons during February. The programs are being telecast over the CBS Television Network, and may be viewed in this area on KMOX-TV, Channel 4, St. Louis, from 3 to 4 o'clock on Sunday afternoons.

The schedule for the February telecasts is as follows:

February 4—Gene Littler vs. Byron Nelson at the Pine Valley, N. J. course.

February 11—Ken Venturi vs. Ugo Grappasoni at Olgiata in Rome, Italy.

February 18—Gary Player and Peter Thomson at the Royal Melbourne course in Melbourne, Australia.

February 25—Mike Souchak and Roberto DeVincenzo at the Jockey Club, Buenos Aires, Argentina.

The new television series will continue for three Sundays in March.

The next Shell-sponsored telecast of a Young Peoples' Concert by the New York Philharmonic, under the direction of Leonard Bernstein, is scheduled for Monday evening, March 26, from 6:30 to 7:30 o'clock. The concerts also are telecast on the nationwide CBS Television Network, and may be viewed in this area over KMOX-TV, Channel 4.

Shell Club officers report more than 500 members of the organization cast ballots in the election. Other candidates included Roark for President; H. G. Rollins, Engineering Services, and L. C. (Red) Snyders, Engineering Field, for Vice President; Thurston Skei, Research Laboratory, and John M. Terrell, Engineering Services, for Secretary; N. E. Tomlinson, Fire and Safety, and D. A. Waters, Engineering Services, for Treasurer; and George E. Mateer, Engineering Field, and Ralph M. Wandling, Engineering Office, for Tail Twister.

(Continued on Page 5)

Employees Near Million Man-Hour Safety Record

Wood River Refinery employees, working in winter's worst weather, had accumulated 713,100 man-hours without a disabling injury by Tuesday, January 23, when they had completed 40 working days without a lost-time accident.

The figure is well over half the coveted million safe man-hour mark, and near the halfway mark to the million-and-a-half safe man-hour goal which will result in the awarding of mechanical pencils to all employees.

The pencils, suitably inscribed, will match the Parker T-Ball Jotter pens awarded Refinery employees for surpassing the million safe man-hour mark in November.

The Refinery has been awarded a National Safety Council Award of Merit for that achievement. The plaque will be displayed throughout the Refinery, in control rooms of operating units, shops and other places.

What's Inside?

Christmas Program Photos

Photographs Taken at the Annual Shell Christmas Program Last Month Page 3

A Service Birthday

SHELL REVIEW Has an Anniversary Page 4

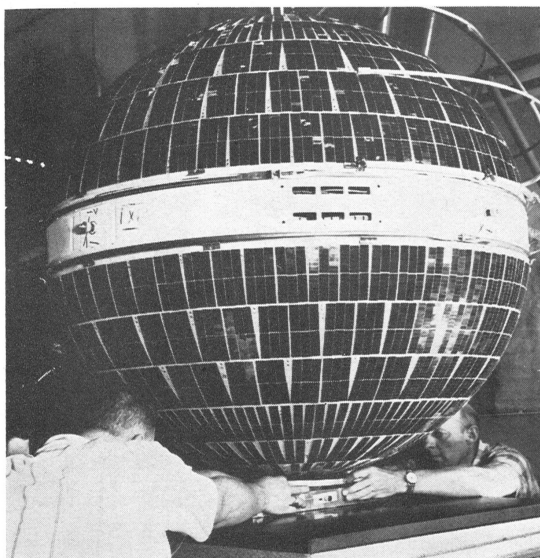
Qs & As

Questions and Answers

About the Oil Industry Page 2

Sports Review Page 6

Winter Weather Safety Page 2



SPACE TEST. Shell Chemical's Epon® 828 has passed an extremely tough test: Withstanding the severe environment of outer space. The epoxy was used in the spherical shell of the Courier 1-B communications satellite, which relies heavily on glass-reinforced epoxy resin for successful performance under conditions of extreme heat and cold, intense radiation, and high vacuum. Launched more than a year ago, the 475-pound satellite still is in orbit and has apparently survived its punishing environment unscathed. Above, the Courier is prepared for a vibration test before launching (*Trademark Registered—U. S. Patent Office.)



AFFECTING YOU AND SHELL

Q. What is the chief factor influencing household fuel oil prices?

A. The answer can be summed up in three words: Supply and demand.

Fuel oil sales fluctuate with the weather. Consumers burn about three-fourths of their year's requirements between Thanksgiving and April Fool's Day—practically none in June, July and August.

This low-demand summer season affects the price of fuel oil all along the line. Heavy summer demand for gasoline leads to accompanying heavy refinery production of fuel oil—oil that will not be needed until the winter months.

To keep that oil moving—to relieve the pressure on his storage facilities—the refiner is willing to reduce his price.

Similarly, operators of fuel oil tankers drop their transportation rates to little more than cost in order to keep their ships in business during this slow season.

The fuel oil jobber is faced with a similar problem. Heating oil is expensive to store. During the hot months, the jobber says to his customer in effect: "I'll make it worth your while if you let me use YOUR storage space by filling your tank while demand for my product is low." (For much the same reason, clothing stores offer winter suits and overcoats at bargain prices in the spring to avoid the cost of storing them over the summer.)

During the cold months, however, the picture changes. Since demand for oil increases, the entire market returns to normal. Inventories are in better balance, and the producer, the tanker operator and the distributor achieve the normal profits they were forced to forego during the summer.

Extra Alertness Required to Cope With Winter Hazards

Cold weather produces certain conditions which increase the possibility of getting hurt. Experience proves that extra alertness on the part of Refinery personnel is the best weapon to cope with the extra hazards winter brings. This is confirmed by the fact that we have had no disabling injury as a result of winter hazards for more than two years.

Nevertheless, none of us can relax our vigilance for one minute in guarding against winter hazards. Some of the more familiar ones are the following:

Steam Obscuring Visibility

Cooling water towers, steam exhausts, etc., provide obstructions to visibility far worse in cold weather than during the mild months. There seems to be little that can be done to eliminate this type of hazard. Accordingly, it be-

hooves all of us to use extreme caution when walking or driving in areas where visibility is a problem. Drivers of vehicles should stop before entering an obscured area and detour if practical. If not practical to take another route, lights should be turned on, horn sounded and forward motion started with extreme caution.

Iceicles

The collection of large icicles at overhead locations presents a hazard to persons below. Such measures as roping off, knocking down icicles after roping off or otherwise taking precautions to see that the falling ice does not cause injury to anyone are very important.

Icing of Roadway, Ladders, Walkways and Steps

The use of salt or sand is very helpful in providing traction on icy walkways, steps and roadways. However, the extent of this hazard may be so great that hours will be required to get around to all areas. Again, extreme caution is the watchword.

Undermined Earth

There is another type of hazard that is prevalent to some extent all year but is accentuated by freezing and thawing weather. Watch for undermined areas, where there is a crust of earth over subsurface pools of water. The water in these pools may be boiling hot because of underground leaks or the collection of rain or melted snow around hot pipe lines below the surface. When an unsuspecting person steps into one of these places he is likely to experience a severe burn to the foot and leg.

To guard against this hazard, stay on regular walkways as much as possible. Watch for tell-tale wisps of steam rising out of the ground and probe with a piece of pipe or board before someone steps into trouble.

Extra watchfulness in guarding against winter hazards can "make the difference" for your safety.



February
 Tuesday, February 20—Shell Club dinner meeting, 6:30 p.m., Wood River Knights of Columbus Hall.
 Sunday, February 25—Research Lab Club bowling tourney, Bowl Inn, East Alton.

March
 Tuesday, March 20—Shell Club dinner meeting, 6:30 p.m., Wood River Knights of Columbus Hall.

1961 Viewed as Busy Year Here

(Continued from Page 1)
 Easter, April 1, more than 2,000 persons attended the Shell Recreation Association sponsored Easter Egg Hunt on Kendall Hill.

Two hundred forty Shell men and women were honored at a service recognition dinner at the Stratford Hotel in Alton on May 11, and another 200 attended a similar function September 14. The well known Tex Benke made a guest appearance at the first dinner, and vaudeville performer Gus Van was the guest of the ever popular Russ David at the second affair.

More than 300 persons attended the annual Shell Club Queen Dance in late May, and saw Miss Andrea Myers crowned queen for 1961. And in July, an estimated 1,800 Shellmen attended the annual Barbecue at Legion Park in Edwardsville.

One hundred forty seven employees took part in the annual SRA golf tourney. Three hundred persons attended an SRA family picnic on Kendall Hill, and 106 men played in the Refinery Softball League in 1961. Nearly 200 employees heard Hal Smith of the St. Louis Cardinals speak at the annual SRA Winners' Banquet at the Rose Bowl in Granite City in November, and 600 attended the Nomination Dance in December.

High Speed Flight Films Are Popular in Sonic Boom Era

The Shell film series about high speed flight has become more and more popular in recent months because of the increasing number of "sonic booms" being experienced in this area during a period of intensified training for pilots and crews of U. S. Air Force high speed aircraft.

The film series actually is about how sound travels through the air, and how the speed of sound affects high speed aircraft. The fact that there is an explanation of the "sonic boom" is merely an added attraction.

"Approaching the Speed of Sound" is the first film of the three part series. This 27½-minute color film features special photographic techniques that give striking views of shock waves building up.

The second film in the series, "Transonic Flight," is an analysis of technical problems in the transonic range—those speeds at which air flow around a plane is part subsonic and part supersonic. It shows how aircraft designers have solved the problems and made flight at transonic speeds smooth and safe. It is a 20 minute color film.

The third and last film of the series, "Beyond the Speed of Sound," discusses the behavior of supersonic air flow and shows how problems of supersonic flight are being overcome through advanced design techniques. Some drawing board versions of aircraft of tomorrow also are shown in this 19-minute color film.

These films offer the thrilling story of the problems of design, construction and operation of today's high speed aircraft, as well

as give an explanation of what is happening when one of our Air Force jet bombers breaks the sound barrier in the training flights being carried on in this area. If you belong to some group or organization looking for an interesting program, or know of some such group, you may want to arrange for these films to be shown. These three films are available at the Refinery and may be reserved by calling the Training Building, Plant Telephone 563.

J. D. Metcalfe Is Re-Elected Head Of Bridge Club

J. D. Metcalfe, Research Laboratory, was re-elected President of the Shell Bridge Club at a business meeting of the SRA-sponsored organization held in December.

H. H. Williams, Refinery Laboratory, was elected Secretary, succeeding C. L. Early, Research Laboratory.

Early, L. A. Kleinhenz and Mrs. Chiste were elected to a Board of Directors. Kleinhenz is in Technological, and Mrs. Chiste is the wife of Pete Chiste, Thermal Cracking.

The new officers assumed their duties, January 1.

Shell Crude Line Is Being Suspended Beneath Bridge Over Missouri River

Construction work began last month on a relocation project for Shell Pipe Line Corporation's mainline crossing of the Missouri River, 22 miles west of St. Louis.

The line being relocated is one of two of the Ozark Pipe Line System's 22-inch Missouri River crossings. The new line will be suspended beneath the Daniel Boone Highway Bridge, and the spare line will remain buried beneath the river bottom.

The relocation was made necessary when flooding conditions last year scoured the river bed and broke the mainline crossing. Since that time, crude has been routed to Wood River Refinery through the spare line.

Completion of the relocation project requires rerouting of 1,000 feet of existing line and installing 2,300 feet of new pipe to make the approach to the south side of the Daniel Boone Bridge, and 1,100 feet of new line north of the bridge. The

2,800 feet of pipe across the bridge will be suspended eight feet beneath the center of the highway with four-inch steel straps at 24-foot intervals. The straps will be connected to steel rods which will be fastened to the lower structure beams of the bridge.

Alaskan Tracts Are Leased by Shell and Others

Bidding jointly on several offshore tracts, Shell Oil Company, Standard Oil Company of California and Richfield Oil Company acquired leases on six tracts in a competitive lease sale held by the state of Alaska in December.

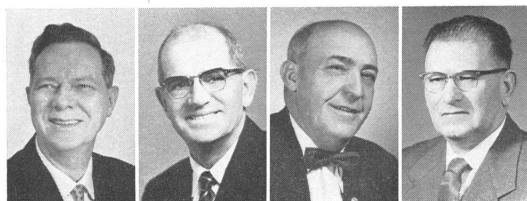
The three companies bid a total of approximately \$5,642,000 for the six tracts, which comprise about 29,000 acres in Cook Inlet near the Swanson River oil field, about 60 miles southwest of Anchorage. Each company has a one-third interest in the holdings.

Soliciting sealed bids on approximately 297,000 acres, including about 170,000 in Cook Inlet, the state of Alaska received more than \$14.6 million from the sale.

Shell has been exploring Alaska for the last several years and has other lease holdings in the state. The new acquisitions mark another step in the Company's operations in the state, which have included surface exploration and seismic work.

Plans for further operations on the jointly-acquired leases are now being discussed by the participating companies.

Retirements



C. J. Haemmerle Eng. Office M. R. Hansell Treasury K. I. Harpole Eng. Field J. A. Mason Eng. Field



V. J. Mellor Lube Oils I. Nesbitt Eng. Field E. L. Paul Alkylation C. A. Price Eng. Field



L. D. Spalding Dispatching J. F. Webber Eng. Field J. C. Yater T. Cracking



Shell Review

Published monthly for the employees of the Shell Oil Company, Wood River Refinery.

W. F. OSTERLOH Editor

Reporters

Operating Departments C. L. Baker
 Research Laboratory F. E. Zapf
 Safety J. A. Bowman
 Engineering Field Office E. B. Wiley
 Purchasing-Stores Brenda Langer

Address Communications to Editor, Shell Review, Box 262, Wood River, Illinois. Phone 863

3,000 Attend Annual Shell Christmas Party



REFINERY MANAGER MERKUS welcomed the crowd to the annual Christmas program.

A crowd estimated at more than 3,000 persons filled the East Alton Wood River Community High School Civic Memorial Gymnasium the night of Thursday, December 14, for the annual Christmas Party for Wood River Refinery employees and members of the families.

An evening of the finest in musical and stage entertainment was climaxed by the traditional visit by Santa Claus and gifts of candy and oranges for the hundreds of children present.

The evening's entertainment began at 6:30 o'clock, with musical selections by the always popular Russ David combo. David, pianist and organist, is a well known St. Louis radio and television entertainer.

Joe Schrimmer, talented banjo and guitar player, made an appearance on stage just before the stage show began, and brought things to a peak with some excellent banjo playing.

Refinery Manager P. J. Merkus then spoke a few brief words of welcome to the crowd assembled, and the stage show began. The three acts included "Lee and Rita," a comedy act presented

while juggling and riding unicycles; the "Farrell Sisters," who danced while playing accordions; and the "Dolinoff and Raya Sisters," choreographic dancers who pleased the audience with a "bit of magic" lighting effects.

Santa then made his appearance on stage from a colorful fireplace, prepared by the Refinery's Painters, and after a few minutes on stage in which he led group singing, he retired to the door of the gymnasium and greeted the children as they left the building.



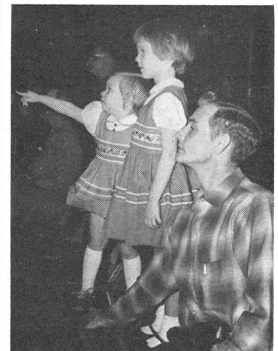
DISPATCHING EMPLOYEE S. L. Ingles is seen arriving at the Christmas Party with two of his children, Stephen, age 4, and Debra, age 2, in her father's arms. Another daughter, Shirley, was out of range of the camera.



EARLY ARRIVALS at the Christmas Party were C. E. Legate, Research Laboratory, and his children. At left is Tim, age 3, and at right is Teresa, age 5, pictured near the front door.



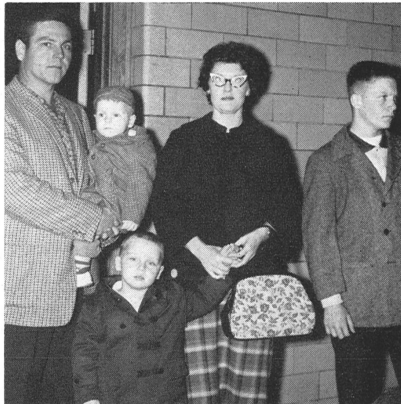
A SCENE OF THE CROWD, taken from a corner of the gymnasium, shows the building was nearly full.



AVID SHOW WATCHERS were the two daughters of James R. Cunningham, Engineering Field. At left, daughter Tammie Sue, age 3, points at the stage, as Cheryl Lynn, age 4, takes in the show from the seat beside her.



SANTA, in his bright red suit, made a big hit with the crowd. He is shown here at the microphone ringing his Christmas bell.



A FAMILY GROUP picture was taken of Argel Edwards, Engineering Field. He is holding his son, Walter. His wife, Frances, is holding the hand of son Mitchell, and Gary is shown at right.



A RETIRED EMPLOYEE who came to the Christmas program with his family was Richard Ash, formerly of the Railroad Section of the Treasury Department. At left is his daughter, Mrs. Kizer, and at the right is his grandson, David Kizer.



BANJO PLAYER Joe Schirmer entertained the crowd with several of his excellent numbers.



ONE OF THE ACTS which entertained the crowd.

SCENES AT THE DOOR



SANTA WAS BUSY at the door of the auditorium after the show ended, greeting the children.



ABOVE THE CROWD, this youth has a good view of the crowd in the hallway, as children receive their candy and oranges from J. L. Roller.

SHELL REVIEW Now Is 25 Years Old

HAPPY BIRTHDAY to the SHELL REVIEW!

Twenty five years ago December 10, the SHELL REVIEW made its first appearance at Wood River Refinery. It consisted of four pages, each page half the size of a sheet of typing paper.

A message on the front page, signed by R. H. Waser, Refinery Manager, was addressed "To Our Employees:" and read: "On the occasion of the publication of the first edition of Shell Review, I want you to know that the Company is pleased to sponsor a paper for the benefit of the Wood River Employees. It is hoped that this paper will be of interest to each of you, and that it will be the means of making you better acquainted with your fellow workers and supervisors, the Refinery Management, the Wood River Refinery and the Company as a whole."

A short story on the front page named A. E. Bayer, Lube Filters; L. C. Wood, Engineering Field; and W. H. Anderson, Patrolman, as winners of a contest to choose a name for the publication. They received \$5 each as their prizes.

On the second page, there was another item about the publication. It read:

"The Shell Review will come to

you on the 10th and 25th day of each month. It will contain items of interest for and about the employees of Wood River Refinery. In order to allow sufficient time for editing and printing, all news items must be in the office of the Editor not later than six days prior to the date of publication."

Another item on the same page contained a long list of employees who were to report news items from their respective departments.

Since that day, the SHELL REVIEW has grown. It now is a monthly publication, and its appearance has changed many times through the years. The size has increased from the early 5 1/2 by 8 1/2 inch page size to the present 11 1/4 by 16 inches, and there are always six pages or more. The flag (the illustration or nameplate at the top of page one) has changed frequently, from the early drawing of the Refinery's Main Gate to the illustration of the Cat Crackers to the comparatively new Pecten and words SHELL REVIEW.

But through the years, the contents of the publication have remained about the same as outlined in Mr. Waser's announcement. Each issue is filled with news of employees, employee activities, and Shell Oil Company.



Wood River, Illinois

Vol. 24, No. 12 December, 1961

32 Employees Nominated as Candidates For SRA Board of Governors

Thirty-two Wood River Refinery employees have been nominated as candidates for the Shell Recreation Association Board of Governors. The names of the nominees were announced at the SRA's annual dance Friday night, December 8, at the Collinsville Park Ball room.

Only six of the 32 nominees present members of the Board. They are Hmurovich, President; H. E. Ufert, Treasurer; F. W. Carroll, and Board members Joe Kimmle, Quentin Stungesser and R. A. Niepert.

Sixteen new Board members will be elected by the SRA membership in January, and they will take office the first week in February. Plans for the election will be announced soon.

As in the past, there will be representatives on the P-Operating Department-Crafts, five men and one woman.

New SRA Board Members To Take Over Next Month

A new Board of Governors of the Shell Recreation Association will take office in early February, following the election held in January in which the ballots were mailed to the homes of members. Winners of the election had not been announced when the SHELL REVIEW went to press.

The new and retiring Board members are scheduled to hold a joint meeting Tuesday, February 6, and the new Board will elect its officers at that time. To be elected are a President, Vice President, Secretary, Treasurer and three Trustees.

The SRA activities program for 1962 is expected to be much like that in the past. The first major activity of the year will be the

annual Easter Egg Hunt for Shell families on Kendall Hill in the spring. Plans for that activity are expected to be announced soon.

Another early activity will be a membership drive, in which employees who are not continuing members of the SRA will be offered the opportunity to join the organization. The majority of the SRA members have authorized annual payroll deduction of \$2 for dues, and thus continue to be members each year so long as they desire.

Other employees will be contacted and offered the opportunity to join the organization, either through the annual payroll deduction plan or by payment of \$2 in cash.

Preparing for Christmas



GETTING READY FOR CHRISTMAS involved erecting signs and decorating Christmas trees at Wood River Refinery. In this photograph, W. C. Redd, Craft Supervisor-Electricians, watches as Electrician Richard Bridwell strings lights on the large tree beside the Personnel and Industrial Relations Building. A sign was placed on the ground beneath the tree. "Season's Greetings" sign was erected by Carpenters on the roof of the Wash House beside the Main Gate, and a tree and similar sign were placed at the Refinery's South Gate.

Shell TV Shows Listed in January

Five Shell-sponsored television programs are scheduled for presentation over the nationwide CBS Television Network during the month of January.

Four of the programs are on Sunday afternoons. They are part of the 11 week series titled "Shell's Wonderful World of Golf" which begins January 7. The fifth program is on Thursday evening, January 18, and is the second of four "Young People's Concerts" being sponsored by Shell this season. The first was on Friday, December 1.

"Shell's Wonderful World of Golf" is a new series featuring the world's best known professional golfers, playing on equally well known courses throughout the world. The new program may be viewed in the St. Louis area from 3 to 4 o'clock over KMOX-TV, Channel 4.

The January 7 program features Jerry Barber and Dai Reen playing on the Westworth course in London, England. Stan Leonard and Jack Burke Jr., will compete at the Banff, Canada course in the program on Sunday, January 14.

Play at St. Andrews. Gene Sarazen and Henry Cotton are featured at the world-famous St. Andrews course in Scotland on the January 21 program, and Bob Roeburg and "Pete" Nakamura will play at the Kasumigasaki course in Tokyo, Japan, in the January 28 program.

The hour-long Young People's Concert on January 18, will be presented in this area at 8:30 p. m. It also may be viewed over KMOX-TV, Channel 4. The concert features the New York Philharmonic under the direction of Leonard Bernstein. The CBS Television Network re-scheduled several regular weekly evening programs in order to present the concert program during prime evening viewing time.

The hour-long Young People's Concert on January 18, will be presented in this area at 8:30 p. m. It also may be viewed over KMOX-TV, Channel 4. The concert features the New York Philharmonic under the direction of Leonard Bernstein. The CBS Television Network re-scheduled several regular weekly evening programs in order to present the concert program during prime evening viewing time.

The hour-long Young People's Concert on January 18, will be presented in this area at 8:30 p. m. It also may be viewed over KMOX-TV, Channel 4. The concert features the New York Philharmonic under the direction of Leonard Bernstein. The CBS Television Network re-scheduled several regular weekly evening programs in order to present the concert program during prime evening viewing time.

The hour-long Young People's Concert on January 18, will be presented in this area at 8:30 p. m. It also may be viewed over KMOX-TV, Channel 4. The concert features the New York Philharmonic under the direction of Leonard Bernstein. The CBS Television Network re-scheduled several regular weekly evening programs in order to present the concert program during prime evening viewing time.

The hour-long Young People's Concert on January 18, will be presented in this area at 8:30 p. m. It also may be viewed over KMOX-TV, Channel 4. The concert features the New York Philharmonic under the direction of Leonard Bernstein. The CBS Television Network re-scheduled several regular weekly evening programs in order to present the concert program during prime evening viewing time.

The hour-long Young People's Concert on January 18, will be presented in this area at 8:30 p. m. It also may be viewed over KMOX-TV, Channel 4. The concert features the New York Philharmonic under the direction of Leonard Bernstein. The CBS Television Network re-scheduled several regular weekly evening programs in order to present the concert program during prime evening viewing time.

The hour-long Young People's Concert on January 18, will be presented in this area at 8:30 p. m. It also may be viewed over KMOX-TV, Channel 4. The concert features the New York Philharmonic under the direction of Leonard Bernstein. The CBS Television Network re-scheduled several regular weekly evening programs in order to present the concert program during prime evening viewing time.

Pipeline Planned For Refineries in Northwest U. S.

Shell is one of three oil companies planning a pipeline to carry petroleum products from refineries at Anacortes and Ferndale through western Washington and to Portland, Ore.

Construction of the line—which will be the first products line in the western half of the state of Washington—will cost about \$17.5 million.

Organized and financed by Shell, Anacortes and Magnolia Pipeline Co., a subsidiary of Soco, Mobil Oil line will service Puget Sound area and will be available to distributors in the western states.

Companies have taken new organization, Co. which will be the Washington

delivered to Seattle, Tacoma and Portland. The line will be served by tankers and deliver their loads to marine terminals for distribution by trucks

(Continued on Page 2)



SANTA CLAUS SEASON is past, and this picture of the jolly old fellow coming through the fireplace at the Annual Christmas Party is reproduced here only to show what an excellent job the Refinery's Painters did in preparing the fireplace for his arrival. The flames leaping from the logs look almost real, as do the fireplace rocks.

The early editions of the SHELL REVIEW, published twice monthly, consisted of only four pages of the size shown above. The present - day monthly SHELL REVIEW normally has six or more pages each issue.

Three New Science Films Are Added to Shell Library

Three new science films have been added to Shell's motion picture library and are available now to groups and organizations needing informative and entertaining programs. Shell now has 13 science films in its library.

The new films are "A Light in Nature," "Unseen Enemies" and "Story in the Rocks." A new Shell film catalog describing the films includes order forms for ordering the new films and others from the Shell film library in Chicago. The new catalogs are available in the Refinery's Training Building, Plant Phone 563, but the new films must be ordered from Chicago.

"A Light in Nature" is a vivid account of man's never-ending efforts to understand — through science—the world around him. The film, 33 minutes and in color, gives a broad perspective of the current scientific scene, from sat-

ellites orbiting the earth to a bathysphere probing the depths of the ocean.

"Unseen Enemies" is a very frank picture of diseases—the enemies of mankind. It is recommended that the film be previewed before being shown to elementary or junior high school students. The film was produced with the active support of the World Health Organization and it underscores the need for medical, economic and social efforts to eradicate conditions in which disease flourishes. The film, in color, runs 32 minutes.

The third new film is "Story in the Rocks." It is an introduction to paleontology—the scientific investigation of extinct creatures whose fossilized remains help improve our understanding of the ancient world and the evolution of life. This film, also in color, runs 17 1/2 minutes.

Jesse Ross Is Transferred to Post at Houston

Jesse Ross, Engineer - Instruments, Engineering Services, transferred from Wood River Refinery January 1, to become a Research Engineer at Shell's Houston Refinery.

Ross began work for Shell in June, 1951, in Engineering Office at Wood River. He transferred to Engineering Field in February, 1956, and to Engineering Services in September, 1956.



"Safety Shoes?"

What's Inside?
Qs & As
Questions and Answers About YOU and the Oil Industry. Page 2
SRA Nomination Dance Story and Photographs Page 3
Junior Achievement Shell Sponsors Four JA Companies, Story and Photographs Page 4
Shell Sports
Sewing and Basketball Page 5
The Voice of Shell Story and Photographs Page 2

T. F. Brennan Is Transferred to Head Office Post

Thomas F. Brennan, Programmer in the Treasury Department's Data Processing Group, has been transferred to Shell's Head Office in New York City. The transfer was effective January 16, according to Treasury Manager D. L. Sever.

Brennan joined Shell in Head Office in 1957 as a Clerk in the Treasury Department there. He came to Wood River Refinery as an Accountant-Stock Accounting, in August, 1959. He joins the Data Systems Group on his return to Head Office.

Rejects, Dispatching, Odd Balls, Cast-Offs Treating Win First Half Pin Championships

Third quarter pin action is well under way in the five Refinery bowling leagues after the Research Rejects, Dispatching, Odd Balls, Lab Cast-Offs and Treating teams won first half flags.

The Research Rejects won the Aero Shell League title without a roll-off, winning both the first and second quarter flags. Dispatching did the same in the Premium League.

In the Rotella League, the first quarter winning Odd Balls had to engage in a roll-off with the Tool Room bowlers, second quarter winners, to capture the title for the first half. They won the roll-off two games out of three, bowing in

the first game but coming back to win the second two.

In the Super Shell League, the first quarter winners, Cast-Offs, won two straight in the roll-off with the second quarter winning Refinery Lab. No. 1 team, last year's Refinery champions. The former champs had to engage in a tie breaking roll-off with the Research Relics. Both teams finished the quarter with 25 points. Refinery Lab. No. 1 won the roll-off in two games.

Treating won the X-100 League title by winning both quarters of the first half.

Final standings for the second quarter are as follows:

AERO SHELL LEAGUE	
Team	Points
Research Rejects	27
Gas Plant	24
Dispatching Gaugers	23½
North Prop. Eng.	16
Cooling Water	16
The Drivers	14
Distilling	13½
P & IR	10

PREMIUM LEAGUE	
Team	Points
Dispatching	27
Refinery Lab. No. 2	24
Pipefitters No. 3	21
Extraction	18
Research Rams	15
Carpenters	13
Cracker Box	13
Fire & Safety	13

ROTELLA LEAGUE	
Team	Points
Tool Room	25
Odd Balls	20
The Mixers	19
Bulk Depot	16
Budstaffs	15
Electricians	13

SUPER SHELL LEAGUE	
Team	Points
Research Relics	25
Refinery Lab. No. 1	25
Pipefitters	21
Boilerhouse	18
Cast-Offs	17
Research Ramblers	16
Alkylation	17
Research Pilots	7

X-100 LEAGUE	
Team	Points
Treating	24
Dispatching Offices	21
Aromatics	20
Refinery Lab. No. 3	19
Cat Cracking	18½
Technologists	16½
Engineers	13
Reformers	12



Mr. and Mrs. R. E. Glenn, a daughter, Christa Elaine. Glenn is an Area Engineer, Engineering Services.

Mr. and Mrs. C. E. Legate, a daughter, Laura Ellen. Legate is a Research Chemist in Research Laboratory.

Mr. and Mrs. R. C. Stewart, a daughter, Linda Carol. Stewart is a Technologist, Experimental Laboratory.

Mr. and Mrs. H. H. Williams, a daughter, Kimberly Joyce. Williams is a Chemist, Refinery Laboratory.

Mr. and Mrs. J. W. Stallings, a daughter, Janet Louise. Stallings is Assistant Manager, Engineering Service.

Mr. and Mrs. R. L. Downer, a daughter, Teresa Lyn. Downer is a Gauger-Special, Dispatching Department.

Mr. and Mrs. August N. Daniels, a daughter, Dianne Elaine. Daniels is a Garage Mechanic Helper 1st, Engineering Field.

Mr. and Mrs. H. Joe Foster, a son, Michael H. Foster is a Research Engineer, Research Laboratory.

Mr. and Mrs. Olin G. Buhr, a daughter, Laurie Jeanne. Buhr is a Bottle Washer in Research Laboratory.

Mr. and Mrs. J. E. Seibold, a daughter, Joyce Lynn. Seibold is a Pipefitter 1st, Engineering Field.

Shell and Western Bowlers Split Match

Shell Refinery bowlers again split their annual match with bowlers from the Western Club of the Olin Mathieson Chemical Corporation in pin action at the Bowl-Inn alleys in East Alton Sunday, January 21.

Shell men triumphed over the Western men for the third year in a row, while the Olin women kept their record intact by defeating the Shell women, who never have won in match history.

Several top-flight individual scoring performances by Shell men highlighted the day's activities. L.

M. Oden, Engineering Field, had everyone on edge in the last game of the match, completing nine frames with nine strikes. However, he spared in the 10th frame to end the game with a 276.

The single game score stands as an individual scoring record in the nine year history of the Shell-Western match, and his 688 series score was high for the day.

The Shell men won the match by 214 pins, with the five teams of Shell men knocking over a total of 13,727 pins, to 13,513 for the Olin

men. The victory put the Shell men one ahead of the Western bowlers in the series which began in 1954. Shell men have won five times and Western men four times.

The Shell women lost by only 58 pins, with Olin women scoring 7,136 to 7,078 for Shell. Marge Erzen was top bowler for the Shell women, rolling a 560 series.

Dick Downer, Dispatching, was second high for the Shell men, rolling a 662 series, with one high game of 264. Downer and Oden were the only bowlers to roll series of 600.

Shell bowlers, their three-game-series scores, according to teams, are as follows:

Men—Williams 572, Brisky 507, Dochwat 592, Fiessel 578, Patton 549. Team total, 2798, lost to Western with 2846.

Weule 499, Neuhaus 486, Garner 510, Zumwalt 536, Downer 662 Team total 2693, lost to Western with 2742. McGinnis 598, McReynolds 554, Decker 553, Robinson 519, Grover 552. Team total 2776, beat Western with 2821.

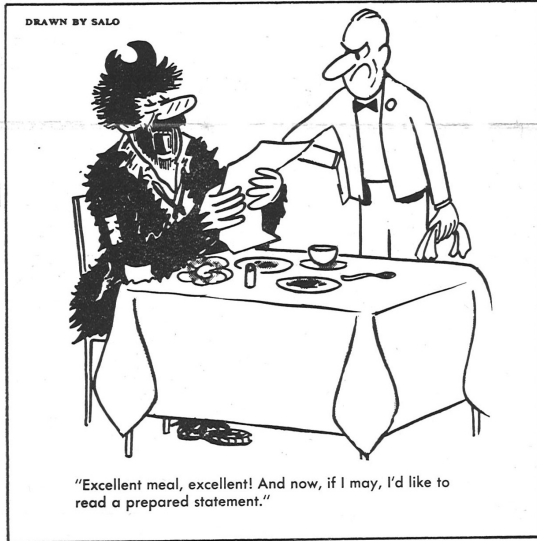
Thompson 540, Byron 513, Manns 502, Schindewolf 562, Oden 688. Team total 2805, lost to Western with 2881.

Patterson 527, Barnes 501, Hoffstetter 540, Nelson 525, Brussatti 562. Team total 2655, beat Western with 2423.

Women—Booten 500, Ayres 485, Wilhite 395, McReynolds 435, Cordes 483. Team total 2298, beat Western with 2233.

Fiessel 411, Panyik 497, Turpin 476, McCoy 421, Erzen 560. Team total 2365, lost to Western with 2422.

Wharry 465, Crews 485, Snider 423, Menzie 486, Nagy 466. Team total 2415, lost to Western with 2481.



Reprinted by special permission of The Saturday Evening Post. ©1954 by The Curtis Publishing Company.

Lambert Elected

(Continued from Page 1)

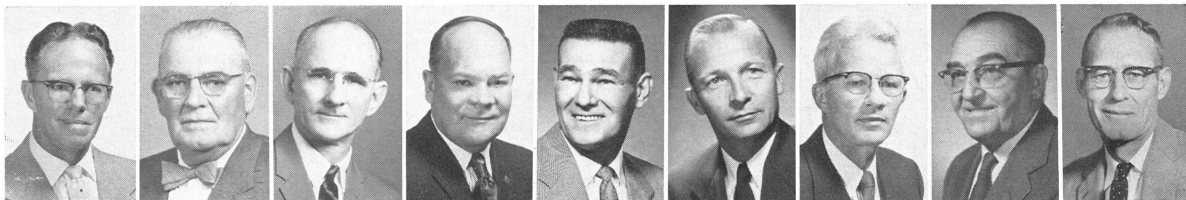
The new officers have completed arrangements for Shell Club dinner meeting programs for February and March.

Robert L. Burnes, sports editor of the ST. LOUIS GLOBE-DEMOCRAT, will be the speaker at the February 20, meeting, also to be at 6:30 p. m. in the Wood River Knights of Columbus Hall. Burnes, in addition to his duties as editor of the sports section of the St. Louis morning daily, he also writes a popular column, "The Bench Warmer," and has a radio sports show daily on Radio Station KMOX.

The March 20, Shell Club program will be presented by the Illinois Bell Telephone Company. Details of the program are to be announced later.



Service SHELL Anniversaries



F. L. Schelm Tr.-Eff. Cont 40 Years

W. R. Armes Dispatching 35 Years

R. L. Bouchet Compounding 30 Years

E. R. Acord Compounding 25 Years

G. C. Miles Compounding 25 Years

H. L. Buettner Eng. Field 20 Years

A. H. Mikkelson P&IR 20 Years

F. J. Pinkas Eng. Field 20 Years

J. R. Spahr Eng. Field 20 Years

15 Years

A. E. Bunt Eng. Field
W. R. McKean Eng. Field
J. R. Hogan Eng. Field
H. A. Murphy Eng. Field

10 Years

W. F. Crain Utilities
V. Knuckles Eng. Field
A. L. Edwards Eng. Field
O. L. Settle Eng. Field

The Sports Review

Aromatics Cagers Leading Refinery Basketball League

Aromatics Department cagers were leading the Laborers by a one-game margin in the Refinery basketball league in mid-January. Aromatics cagers held a season's record of seven wins and two losses, while the Laborers had won six games and lost three so far in the 1961-62 season.

The Research Laboratory entry was third in the four-team league with a record of four wins and five losses, while the Technologists were in the league cellar with only one win in nine attempts.

The Laborers and Aromatics squads have faced each other three times so far in the season, with the Aromatics squad winning two of the three encounters. Aromatics won a 59-43 contest on the opening night of the season, November 14, and then nosed the Laborers out 65-61 in a contest December 5.

The Laborers gained some revenge December 26, scoring an eight point 60-42 victory over the Aromatics team.

The only other loss of the season for Aromatics was a 59-56 loss to Research December 19. The third loss for the Laborers was a 62-53

upset at the hands of the Research squad. The Research team's other two victories were over the Technologists.

Paul Seiberlich of the Aromatics squad is the league's top point producer with 124 points so far this season. He has averaged 15.5 points per game in the eight games in which he has appeared. In second place in the point production column is Bruce Crawford, also of the Aromatics team, with 120 points in eight games for an even 15-points-per-game average.

Bill King is the leading scorer in nine games, for an average of better than 12.5 points per game. He is in third place in the league point-production-wise.

Fred Foster of the Technologists and Jerry Manis of Research are tied for fourth and fifth places in the league scoring columns, and naturally are the leading scorers of their respective teams. Both men have scored 96 points so far this season. However, Foster has appeared in only eight games, while Manis has played in all nine of the Research efforts.

Annual SRA Pin Tourney April 7, 14

The annual Shell Recreation Association bowling tournament has been scheduled for two Saturdays in April at the Bowl Inn, East Alton.

Singles and doubles competition will be on Saturday, April 7, and three-man team bowling will be on Saturday, April 14.

Detailed plans for the tourney will be announced later.

The women's bowling tourney is scheduled for Sunday, January 28. The women's tournament, also at the Bowl Inn, will be completed in one day.

Shell Bowlers Lose Industrial League Roll-Off

Shell No. 1 bowlers in the Industrial Bowling League captured the league's second quarter flag with little difficulty, but lost two straight games to Westerner Club bowlers in the roll-off for the first half championship.

Shell No. 2 finished the second quarter in a tie for fourth, fifth and sixth places.

The No. 1 bowlers finished the second quarter with a record of 21 wins and six losses, far ahead of the second and third place entries. Machine Shop and Alton Box Board both finished the quarter with 16-11 records.

Shell No. 2, Onized No. 7 and Sinclair had 15-12 records, while the first-quarter-winning Westerner Club finished the second quarter with a record of 14 wins and 13 losses. The Mold Shop finished in the league cellar with a 11-16 record.

Earl McGinnis of Shell No. 1 is leading the Industrial League in the average department with an average of 194. Dick Downer of the same team is in fourth place with an average of 188, and Dave Patton is in fifth place with a 186 average. Another Shell bowler in the top 10 in that department is Jess Grover with an average of 183.

Jack Cherry of Shell No. 2 is tied for 10th, 11th and 12th places with an average of 182.

Shell No. 1 has the individual high three game series score with 2,933 pins, and is in second place in the team high single game scoring column with 1,018.

McGinnis of Shell No. 1 holds the league high three game series score with 661.



AN EARLY KILL in the Illinois deer hunting season last month was this eight point buck shot by Harry E. Woods, Pipefitter Helper 1st, Engineering Field. Woods, shown here, bagged the 97-pound deer in Southern Illinois 30 minutes after the season opened at 7 a.m., December 1. Shown with his buck is a 51-pound doe killed a few minutes later by his hunting companion, nephew, Johnny Crest.

Shell Mrs. Win First Half In Ladies' Bowling League

The Shell Mrs. won the first half championship in the Shell Ladies' Bowling League, winning the second quarter title and then sweeping two straight from Research, first quarter winners, in the roll-off.

The Oilerettes and Shellettes finished the second quarter in a tie for second and third places, and the first-quarter-winning Research team finished the second quarter in a tie for fourth and fifth places with the Skyrockets.

The Shell Mrs. three game score of 2,471 remained high for the league throughout most of the first half, with the Shellettes in second with a score of 2,326 pins and the Research team third with 2,273.

In the team high single game category, the Firecrackers led the league with 861, followed by the Oilerettes with 842 and the Ten Pins with 832.

Marge Erzen of the Shellettes took over the league lead in the individual high three game series department with a 591 series. Agnes Menzie's 590 series was second, and Ikie Booten and Harriette Ballman were tied for third

with scores of 531. Menzie bowls for the Firecrackers, Booten for Research and Ballman for the Firecrackers.

In the individual high single game scoring column, Arlene Wharry of the Shell Mrs., who led the league through November with a 218 game, fell to second place when a 224 score by Erzen took over the league lead. Agnes McCoy of the Oilerettes was third with a game of 217.

Menzie is the league's leading average scorer with a 171 average, followed by Erzen with 162, Ballman, McCoy and Dorothy Cordes, of the Research team, with averages of 154.

Final standings for the second quarter were as follows:

Team	W	L
Shell Mrs.	19	8
Oilerettes	17	10
Shellettes	17	10
Research	14	13
Skyrockets	14	13
Activators	13	14
Firecrackers	13	14
Refinery Lab Mrs.	13	14
Ten Pins	10	17
Shell Mixers	7	20



REFINERY VISITORS December 27, were these members of Shell sponsored Junior Achievement companies. The teen-agers came to the Refinery in a chartered bus and toured the plant, stopping at several operating units and places of interest. They also had the opportunity to visit with their Shell-employee-advisors over refreshments served in the Training Building. This photograph was taken on the Main Office steps just before their afternoon visit ended.



"The bride wore an ivory satin gown with Alencon lace, a cap of matching lace with a tulle veil and carried a bouquet of white orchids and fleur d'amour. The groom didn't show up."

Reprinted by special permission of The Saturday Evening Post. ©1954 by The Curtis Publishing Company.

SHELL OIL COMPANY Wood River, Illinois

Form 3547 Requested

IS THIS CORRECT?

IF NOT, NOTIFY YOUR SUPERVISOR:

Shell's Best Bowlers

High Average
Dave Patton — Dispatching, Premium League, 200.

Earl McGinnis—Shell No. 1, Industrial League, 194.

Dick Downer — Dispatching, Premium League, 188.

High Three Game Series
Reggie Boyd — Reformers, X-100 League, 707.

Dave Patton — Dispatching, Premium League, 680.

Dick Downer — Dispatching, Premium League, 675.

High Single Game
Dick Downer — Dispatching, Premium League, 267.

Clarence Shirley—North Property Engineers, Aero Shell League, 261.

Dave Patton — Shell No. 1, Industrial League, 256.

Paul Potter—North Property Engineers, Aero Shell League, 256.

Sec. 34.66 P.L.&R.

U. S. POSTAGE
PAID
Edwardsville, Ill.
Permit No. 25