



# REVIEW

Wood River, Illinois

Vol. 27 No. 7 Sept. - Oct., 1964

## Motorlab Prototype Is Being Built Here

Construction work began at Wood River Refinery in August on a prototype of Shell's new "Motorlabs,"\* to be built in metropolitan areas across the United States. (See SHELL NEWS, July-August edition.)

A variety of automotive equipment designed to diagnose the various troubles that might beset any automobile will be tested in the new Research Laboratory facility. The entire "diagnostic line" of the first Shell Motorlab will be a duplicate of the line to be installed at Wood River, where the equipment will be evaluated under actual operating conditions.

The Wood River experimental facility also will be used to compile information about all makes and models of automobiles that diagnosticians might need in operation of the Motorlabs. And eventually, the facility here will be used as a training center for personnel who will operate the Motorlabs after they are constructed.

The Motorlabs and the experimental diagnostic line at Wood River Research Laboratory will apply assembly-line techniques to the determination of car repair needs. Equipment installed on the line will enable diagnosticians to thoroughly check an automobile for mechanical and other defects — inside and out, top to bottom and front to rear bumper. Following this checkup, a car owner will have a thorough analysis of his automotive repair needs, and at the Motorlabs, the owner will have the opportunity to have the defects corrected on the spot.

The diagnostic lines will be equipped to check such things as wheel alignment, tire balance, brakes, headlight aim, carburetion and ignition, to name just a few. Two dynamometers will be built into the line so that where necessary, these things can be checked under simulated on-the-road conditions.

The Wood River prototype is expected to be put into operation late this year, and Research Laboratory employees will begin determining just what automotive equipment and information will be needed in Shell's first Motorlab, to be built near Detroit.

\*—Trademark.



**BREAKING GROUND** for Wood River Research Laboratory's prototype of Shell's new Motorlabs is Research Director R. J. Greenshields. Standing by at the left is Project Engineer D. E. Bradfisch, Engineering Office, and at right is Chief Research Engineer J. W. Armstrong. An architect's drawing of the new Research facility is reproduced below the photograph. The new one-story brick building is being erected in the Research Laboratory complex north of the garage and coldroom.

## Norco and Martinez Expansion Programs Are Well Under Way

Programs announced last fall for expansion and modernization of the Norco and Martinez Refineries now are well under way. When the programs are completed in 1966, Shell's daily production of gasoline and distillates will be boosted by 70,000 barrels.

The refineries were chosen for expansion because of their access to raw materials and growing product markets. Martinez's crude capacity will be raised 55 per cent from 55,000 to 85,000 barrels daily, and Norco's crude capacity will be increased 34 per cent from 118,000 to 158,000 barrels daily.

The first phase of the expansion program at Norco is about two-thirds completed and is expected to be finished by early 1965. This phase consists of a new crude unit, a vacuum flash-

er and a hydrotreater for cat cracker feed stocks. The second phase of the program, which includes the installation of a new hydrocracker and debottlenecking of related facilities, will be completed by mid-1966.

Ground was broken in July for the Martinez expansion project when heavy earthmoving equipment began moving some 1.5 million yards of earth to provide the level location for the new refinery complex. New units due to be installed include a crude oil distillation unit, catalytic cracker, hydrotreaters, hydrocracker, catalytic reformer, alkylation plant and gas recovery and hydrogen manufacturing facilities. Additional tankage and other required off-site facilities also will be installed.



**UNITED FUND DRIVE LEADERS** are shown above signing a letter to all employees urging participation in the 1964 Refinery United Fund campaign October 12 through 16. From the left are Chairman J. W. Askins, Manager Utilities; H. L. Rice, Refinery Laboratory, representing the International Union of Operating Engineers; E. M. Peccola, Engineering Field, representing the International Association of Machinists; and R. L. Elliott, Engineering Field, representing the Refinery's ten craft unions.

## United Fund Drive Will Be Held at Refinery Oct. 12-16

Every Wood River employee will have an opportunity to contribute to the charitable organizations of his home community in the Fourth Annual Refinery United Fund Drive, scheduled for October 12 through 16. This week-long effort at the Refinery is timed to coincide with area United Fund drives which will be conducted throughout the month of October. A steering committee began making plans last month to make this Wood River Refinery's most successful drive.

Serving as chairman of the steering committee this year is J. W. Askins, Manager Utilities Department. Representatives of the union bargaining groups on the committee are R. L. Elliott, Engineering Field, representing the 10 craft unions. E. M. Peccola, Engineering Field, representing the International Association of Machinists; and H. L. Rice, Refinery Laboratory, representing the International Union of Operating Engineers.

Also on the committee are J. S. Wilwerding and C. E. Reichert, Treasury; C. L. Baker and M. S. Waller, Engineering Field; J. S. Brien and C. A. Davidson, Refinery Personnel and Industrial Relations; and V. E. Yust, Research Laboratory. The drive leaders have selected division chairmen and solicitors who will conduct the drive in various operating departments, zones, offices and shops.

This year for the first time, contributions by payroll deductions may be spread throughout the year by deductions of \$1 or more for up to 26 consecutive pay periods for Hourly employees, or 24 for Staff. As in previous years, employees may designate the United Fund in their home community as the recipient of their contributions if they reside outside the Alton-Wood River area.

The Refinery drive will be geared toward obtaining a high percentage of employee participation with individual contribution.

(Continued on Page 4)



**A SHELL GIFT TO THE UNIVERSITY OF ILLINOIS** was the large air heater shown in the photograph above as it was being removed recently from its location at the Wanda Research Laboratory at the Refinery's South Gate. In the foreground watching the removal project is Wood River Research Director R. J. Greenshields. The air heater was installed at the Wanda Laboratory during the latter part of World War Two when Shell Research personnel first began work on jet engine fuels and lubricants. It was a part of the equipment which allowed simulation of high altitude and high speed operating conditions in the jet engines being developed at the time under conditions of military secrecy. The heater now will be used by the University of Illinois for work by students,

### What's Inside?

SRA Family Picnic Scenes .....	Page 2
Grant's Farm Tour Photos .....	Page 2
Provident Fund Withdrawals You Might Save Some Time .....	Page 3

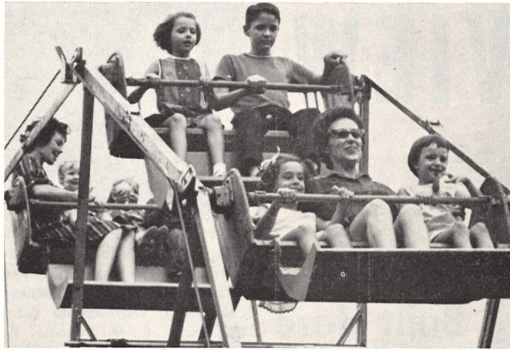
# Large Crowd Attends Annual Family Picnic

Nearly 500 persons attended the Shell Recreation Association's annual Family Picnic Sunday, September 20, in the employee park on Kendall Hill where they enjoyed the carnival-type attractions of the one-day event. SRA Board members reported the attendance to be the biggest ever for the annual September affair.

Rides on a Ferris wheel, in mechanical cars, on ponies or in wagons drawn by ponies, bean bag tossing, washer pitching and a fish pond amused the children, while adults were entertained with horseshoe pitching and hole-in-one contests.

J. A. Grover, Engineering Field, won the singles championship in the horseshoe pitching contest, winning out over V. E. Bunge, Engineering Field, last year's champion, in the finals. And Grover teamed with J. A. Schillinger, Refinery Laboratory, to win the doubles championship. Winning second place in doubles competition were R. E. Dodd, Research Laboratory, and C. Arnold, Engineering Field.

In the hole-in-one contests, F.



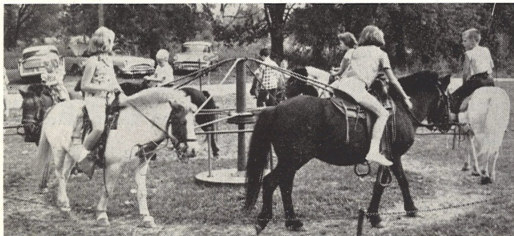
**THE FERRIS WHEEL** was a big attraction at this year's picnic and was busy all afternoon. In the front seat coming over the top in this photograph is Betty DeLaurenti, Purchasing-Stores, with her daughter, Michelle, on the left, and Alice McLean, daughter of D. W. McLean, Personnel and Industrial Relations, on the right.

L. Pinkas, Engineering Services, won first in the men's division, followed by J. H. Scroggins, Thermal Cracking; and Mike Fulkerson, son of S. M. Fulkerson, Engineering Field. In the women's division, Mary

Hanahan, daughter of J. R. Hanahan, Engineering Office, won first place, followed by Cathy Carmody, daughter of J. W. Carmody, Engineering Services; and Betty D. DeLaurenti, Research Laboratory.



**THE FISH POND** made a big hit with the younger set. Some of them are shown here lining up for their chance to win a prize.



**PONY RIDES** were another popular picnic item for the children. Several are shown astride ponies in the above photograph.



**A PRIZE WINNER**, Keith Lewis, son of R. E. Lewis, Aromatics, examines a plastic fish he caught. Sharon Schmidt, Purchasing-Stores, a member of the SRA Board of Governors, helps young Lewis.



**FIRE TRUCK DRIVER** Dave Poling, son of D. E. Poling, Research Laboratory, enjoying a turn in the mechanical cars.



**ENJOYING A SNO-CONE** before taking off in a mechanical airplane is Mary Helen Bevforden, daughter of R. A. Bevforden, Engineering Field.

## Malseed, Others Named in Recent Personnel Moves

W. A. Malseed, Manager Gas Department, was transferred to Shell's Head Office October 1, as Personnel Planning Representative in the Personnel Planning and Development Department.



**Malseed**

D. C. McCormack, Assistant Manager Lubricating Oils, replaced Malseed as Manager Gas, according to Refinery Manager A. C. Hogge's announcement. R. M. Kembal Cook, Thermal Cracking Department Technologist, was transferred to Lubricating Oils as Assistant Manager.

In recently announced personnel changes in Research Laboratory, E. R. Lane, Group Leader, was promoted to the position of Assistant Chief Research Chemist. Research Engineer L. B. Graiff was named Group Leader Engine Fuels-Deposition and Combustion. F. J. Cordera was named Group Leader Engine Lubricants. J. L. Bame

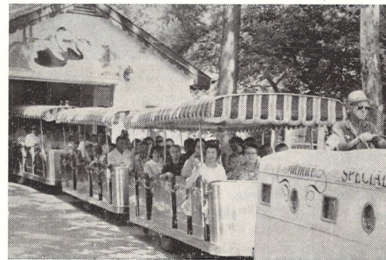
was named Group Leader Engine Fuels - Antiknock and Performance. S. J. Beaubien, who transferred from Emeryville to Wood River, was named Group Leader Transmission and Gear Lubricants, a newly formed group.

V. B. Thegze, Senior Technologist, Technological Department, was transferred to the Odessa Refinery as a Senior Technologist.

J. W. Stallings, Assistant Manager Engineering Services, was transferred to the Head Office Manufacturing Engineering Department as a Senior Engineer, and W. J. Deissinger, Senior Engineer, Engineering Office, was named Assistant Manager, Instruments, Engineering Services Department.

J. C. Finney, Senior Engineer, Engineering Services, was transferred to the Head Office Manufacturing Engineering Department in that capacity on October 1, and R. J. Swofford, Assistant Manager Engineering Office, will transfer to Head Office Manufacturing Engineering as a Senior Engineer on November 1.

## SRA Grant's Farm Tours Prove Popular



**GRANT'S FARM TOURS** were an additional Shell Recreation Association activity this past summer, with chartered buses carrying members and their families to the historic and scenic attraction in south St. Louis on three separate occasions. In the scene above, the first Shell group is shown leaving Grant's Farm station aboard the special train. At upper right, Mary Sue and Nancy Blair, daughters of E. E. Blair, Engineering Field, have their hands full feeding a goat, as do Linda and Dean Brown, children of Robert Brown, Engineering Field, in the photo at lower right. In the scene at lower left, others in a Shell group lean over the edge of the bear pit for a better view.



## Jury Duty Is a Civic Responsibility

Since jury duty is an important civic responsibility, Shell employees are allowed time off the job without loss of pay for

time spent on jury duty. Whenever you are called, please notify your supervisor promptly so he can plan for your absence.

Shell Review



Published monthly for the employees of the Shell Oil Company, Wood River Refinery.

W. F. OSTERLOH

Box 262, Wood River, Illinois. Phone 342  
Address Communications to Editor, Shell Review,

Editor

To Prevent Provident Fund Delays

# Verify Amount You May Withdraw

Although the primary objective of the Shell Provident Fund is to enable employees to accumulate savings for use after retirement, the Plan also provides for withdrawal of a portion of an employee's contributions during employment. Employees with five or more years of accredited service may withdraw up to 50 per cent of their contributions made to the Provident Fund since January 1, 1959. The minimum withdrawal is \$100. After making a withdrawal, another with-

drawal may not be made for 12 calendar months. Before filling out the Withdrawal Direction form, be sure to verify the amount you are entitled to withdraw from your account in the Thrift Fund or the Equities Fund, or both. As indicated on the form, no withdrawal may exceed the value of the account from which the withdrawal is to be made. In the event the amount requested exceeds the amount you are eligible to withdraw, the Provident Fund Office must return

the Withdrawal Direction to you for revision. By verifying the amount you are eligible to withdraw, you can prevent this delay. The information you need is available from your annual Provident Fund Statement together with the paycheck stubs showing your contributions since the period covered by your last statement. You also will find the "Shell Provident Fund" booklet a helpful guide in determining the amount you are eligible to withdraw.

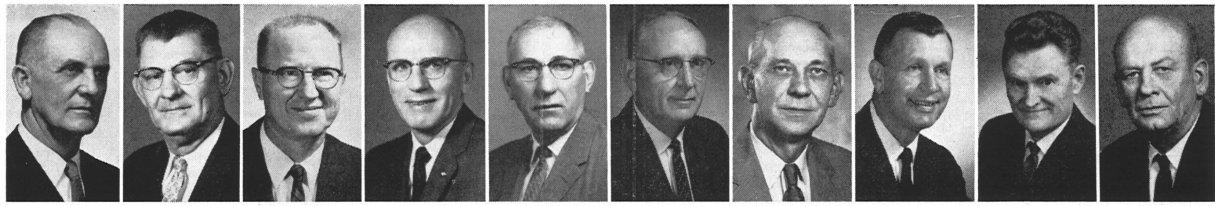
# Shell's Disability Benefit Plan

After one year of accredited service, employees are eligible for benefits under the Disability Benefit Plan. The plan provides for the continuance of a good share of your earnings when either sickness or accident prevents you from working. The benefits are determined by your years of accredited service and normal earnings at the time of disability. These benefits are provided by Shell at no cost to you.

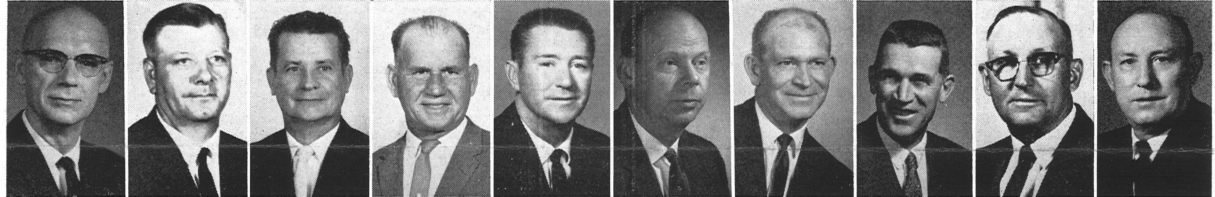


**Mr. and Mrs. M. L. Niebur**, a son, **Mark Douglas**. Niebur is a Scheduling Assistant, Dispatching Department.  
**Mr. and Mrs. M. E. Mason**, a daughter, **Candice Helen**. Mason is a Lab Assistant, Research Laboratory.  
**Mr. and Mrs. D. E. Poling**, a son, **Mark Eugene**. Poling is a Senior Lab Assistant, Research Laboratory.

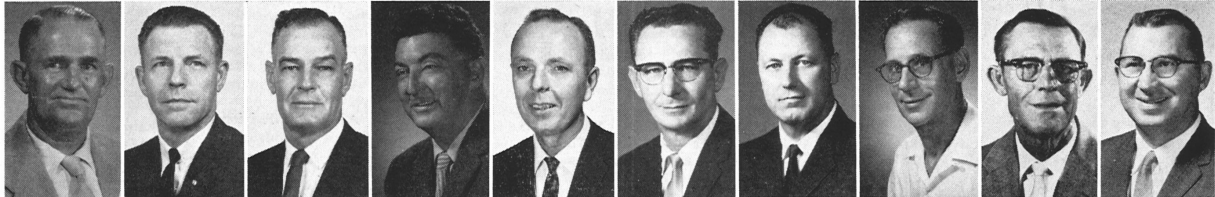
## Service Anniversaries



**C. E. Beason** Alkylation 40 Years    **E. Colner** Utilities 40 Years    **A. J. Albers** Distilling 35 Years    **E. B. Gillis** Research Lab 35 Years    **A. W. Habbe** Aromatics 35 Years    **E. M. Heeren** Cat Cracking 35 Years    **W. B. King** Lube Oils 35 Years    **C. A. Wentz** Eng. Field 35 Years    **J. L. Jackson** Research Lab 30 Years    **D. C. McLain** Gas 30 Years



**E. Bean** Purch-Stores 25 Years    **W. F. Bird** Eng. Field 25 Years    **E. Buckshot Jr.** Eng. Field 25 Years    **R. M. Davis** Eng. Field 25 Years    **H. T. Duncan** Purch.-Stores 25 Years    **E. Engelmann** Cat Cracking 25 Years    **S. M. Fulkerson** Eng. Field 25 Years    **J. E. Gray** Eng. Field 25 Years    **O. E. Heigert** Eng. Field 25 Years    **W. W. Jones** Eng. Field 25 Years



**C. A. Kessinger** Eng. Field 25 Years    **H. C. Laatsch** Refinery Lab. 25 Years    **W. H. Lamm** Eng. Field 25 Years    **W. M. Landers** Eng. Field 25 Years    **R. H. Legate** Refinery Lab 25 Years    **L. McNabney** Eng. Field 25 Years    **C. I. Murphy** Eng. Field 25 Years    **I. Nuernberger** Dispatching 25 Years    **V. A. Oltmann** Eng. Field 25 Years    **G. Richardson** Refinery Lab 25 Years



**W. S. Rives** Eng. Field 25 Years    **F. W. Ruehrup** Eng. Field 25 Years    **E. W. Schmidt** Distilling 25 Years    **E. C. Schuette** Eng. Field 25 Years    **H. D. Steelman** Refinery Lab 25 Years    **R. F. Stringer** Eng. Field 25 Years    **G. Thompson** Refinery Lab 25 Years    **A. W. Uhlig** Eng. Field 25 Years    **J. Unterbrink** Eng. Field 25 Years    **L. C. Williams** Eng. Field 25 Years

20 Years			15 Years			10 Years		
E. W. Allen Dispatching	J. J. Lorch Eng. Field	F. A. Poole Lube Oils	E. F. Bailey Treasury	A. T. Iberg Eng. Field	W. C. Beets Lube Oils	D. M. Hancock Eng. Field	W. H. Pohlman Utilities	
D. L. Ballentine Utilities	G. W. McDonough Eng. Field	H. C. Schwalb Cat Cracking	L. R. Bollinger Eng. Field	R. F. Jenkins Eng. Field	L. H. Behme Utilities	A. Hiette Compounding	M. V. Norton Dispatching	
E. A. Depping Utilities	G. L. McAtee Eng. Field	D. G. Skinner Eng. Field	R. W. Bray Eng. Field	T. N. O'Donnell Treasury	C. R. Boyer Eng. Office	C. E. Hoffstetter Eng. Services	C. J. Richards Eng. Field	
E. E. Eudy Dispatching	J. L. Medler Dispatching	J. I. Smith Aromatics	F. S. Darr Distilling	E. L. Schneider Distilling	L. D. Bush Eng. Field	R. H. Horbelt Eng. Field	W. C. Rinkel Eng. Field	
R. E. Fielder Eng. Field	H. H. Miller Purch-Stores	R. H. Solomon Cat Cracking	J. T. Davenport Research Lab	J. E. Seibold Eng. Field	W. L. Capps Eng. Field	A. J. Kalvin Eng. Field	H. G. Rollins Aromatics	
C. Foster Eng. Field	E. A. Nolan Eng. Field	E. Wargo Lube Oils	J. J. Heithaus Jr. Research Lab	J. R. Wharry Dispatching	P. E. Carter P&R	L. H. Langendorf Gas	J. Sapienza Eng. Services	
E. L. Hatfield Dispatching	P. T. Pike Utilities	H. G. Wilson Aromatics		R. H. Wieseman Eng. Field	J. T. Doherty Tr.-Eff. Cont.	L. J. Mengal Eng. Field	E. A. Schenk Aromatics	
					E. B. Fennell Eng. Field	E. D. Mortimer Lube Oils	J. W. Webber Eng. Field	



REFINERY GOLF CHAMPIONS for the 1964 season were the Thermal Cracking golfers of the Premium League, who defeated the Silver Shell League's P&IR golfers for the title. From the left in front are R. W. Stouffer, John Honchak, L. J. LaPelle, T. V. Allaria, K. J. Darte and R. A. Adams. In back are J. D. Kessler, G. C. Hedges, E. C. Fretz, V. I. Oehler, Robert Watson and H. S. Hartkopf. Not present when the photo was taken were R. A. Neuhaus, H. J. Schenk, J. C. Carlton and J. H. Scroggins.

## Prize Winners Are Named In SRA Fishing Competition

Third period prize winners in the Shell Recreation Association fishing contest failed to threaten the leaders in season-long competition for grand prizes. A. G. Emshousen, Engineering Field, hooked the biggest bass of the period, three-pounds, nine ounces. Other winners in that division were R. D. Garner, Dispatching; and W. E. Weiss, Fire and Safety.

A. Corsere, Engineering Field, turned in a two-pound, seven-ounce crappie. Other winners in the crappie division were H. H. Hayes, Dispatching; and R. Leckrone, Engineering Office. Blue gill division winners were E. Allen, Dispatching, with a 10½-ounce catch; L. Giacomelli and G. Dalton, Engineering Field; and J. Malone, Engineering Office.

## Check Your HSM Coverages

If you are enrolled for family coverage under the Shell Hospital Surgical Medical Program and have an unmarried, dependent child approaching age 19, it is up to you to arrange for continuation of coverage beyond the child's 19th birthday by making application and paying an additional monthly premium.

If the child thereafter loses dependency status as a result of marriage, full-time employment or attaining age 25, you should arrange to discontinue the additional payment, since he or she no longer is eligible to receive benefits under the Program. Arrangements in either case can be made through your Supervisor.

## Don't Let Your Vote Be Missed Nov. 3

**Q. Why is it of critical importance that you vote on November 3?**

A. Contrary to popular belief, your vote will be missed on election day if you fail to show at the polls.

If your ballot is not used, it will be one of an estimated 39,000,000. This estimate is based on the number of eligible persons who did not vote in the 1960 presidential election, the closest since 1888. In that year, Benjamin Harrison defeated Grover Cleveland in the Electoral College despite Cleveland's plurality of 95,713 votes.

The late John F. Kennedy's plurality in 1960 over Richard M. Nixon was only 112,881 - - - out of a total of 68,838,565 votes cast. No one can say what the results would have been had the nation's millions of "no-show" citizens taken the time to vote.

An analysis of the voting results in the 1960 election showed just how important each vote was. A shift of 18,000 votes in just two states - - Illinois and Missouri - - would have reduced President Kennedy's electoral votes by 40 to deny him a required majority of 269 votes in the Electoral College.

In recent years, there have been many close elections in all sections of the country and at all levels of elective office. Some contests have

been decided on the basis of one person's vote. One vote in Oklahoma City's mayoralty election in 1959 decided the future course of that city's affairs. The totals were 9,571 to 9,570. In Newington, Conn., in 1962, a representative to the state's General Assembly was elected with 4,164 votes to his opponent's 4,163.

One of the major reasons why all eligible Americans should vote on November 3 is that the number of public offices to be filled totals about 500,000. These positions range from town dog warden to the most important job in the world - - the Presidency of the United States.

In addition to the Presidency and Vice Presidency, there are 35 seats in the Senate to be filled, all 435 in the House of Representatives, 26 state governorships, and various other important state and local official positions.

Deciding who will best fill these offices of public trust calls for careful consideration by each voter. Each candidate's party affiliation, his party's platform, his individual stand on the issues, his proposed solutions to the problems, and his qualifications for office are among the many factors which should be weighed by an informed electorate.

While some persons may limit their roles as voters

to being informed on the issues and candidates, many will recognize that the parties and candidates they favor will need financial support in the campaigns. The Congressional races alone cost more than \$18,000,000 in 1962, and in a year of national campaigns, total expenditures for travel, literature, television time, and campaign headquarters will be many times this amount. Your contribution, whatever its amount, is needed and will be appreciated. When you decide that you should contribute to a party or candidate, keep in mind that donations to national committees are used in national campaigns, state committees in state campaigns, local committees in local campaigns. Some people prefer to pick and choose among candidates, giving only to campaigns of individual candidates of whom they strongly approve.

Those wishing also to contribute time and effort in the closing weeks of the campaigns will be welcome at all levels of their party's volunteer organizations.

The most important time and effort, however, is that which the American people contribute by voting. Abraham Lincoln once said: "It isn't the number of qualified voters, but the number of qualified voters who vote that constitutes the strength of a nation."

## SRA Bowling Season Now Underway

Eight teams are seeking the 1964-65 Wood River Refinery bowling crown, knocking over the pins every Wednesday night this season at the Bowl Inn alleys in East Alton. After one month of action, North Property bowlers were in first place, while the defending champion Tool Room team was in the league cellar.

Teams and their captains this year include: Boiler House - Charles Irwin, Utilities; Tool Room - Lynn Clark, Alkylation; the Mixers - Oscar Kleinert, Retired; Research Relics - Charles Towne, Research Laboratory; Tech Department - John Thomas, Dispatching; North Property - Paul Potter, Engineering Field; Engineering Office - John Devereux, Engineering Services; and Research Rejects - Vern Welch, Research Laboratory.

## Lab Club Will

## Renew Mileage

## Marathon Here

Research Laboratory employees will hit the road Saturday morning, October 10, in the first "Mileage Marathon" in more than five years. The test of driving and engine-tune-up skills will last throughout the morning over a 65-mile course starting at the Research Lab garage at 9:30 and ending at Kendall Hill shortly after noon. Trophies will be awarded in four classes.

A picnic for Research families, featuring games and prizes for children, will be held during the afternoon, and an added attraction will be a football game between the Research Chemists and Engineers.



DEFENDING CHAMPIONS of the Refinery Bowling League are members of the Tool Room team, pictured here at the Bowl Inn in East Alton early in the 1964-65 season when they began defense of the title they earned last season. From the left in front are H. D. Nelson, Engineering Field; Team Captain L. K. Clark, Alkylation; and C. W. Barnes, Purchasing-Stores. In back are G. R. Hudson, Treasury; and J. W. Klinke, Engineering Field. Absent when the photo was taken was L. E. Rudolph, Treasury.

## Employee New President of 1st Armored Group

Emil C. Schneider, Operator 1st, Lube Oils, was elected national president of the 1st Armored Division Association at the 17th annual reunion of the organization held recently in San Antonio, Tex.

Schneider has served for the past year as judge advocate of the association. The three-day convention was highlighted by a tour of Ft. Hood, Tex., where the active 1st Armored Division passed in review.

The First Armored Division Association is an organization for World War II veterans and active members of the division which gained fame in World War II in campaigns in Africa and Italy. Schneider served as a member of that unit in both campaigns.

**SHELL OIL COMPANY**  
Wood River, Illinois  
Return Requested

IS THIS CORRECT?

IF NOT, NOTIFY YOUR SUPERVISOR:

## Deaths

Elmer W. Johnson, Boilermaker who retired February 1, 1960, died August 26, 1964, at age 67.

Ralph J. Riner, Zone Foreman who retired November 1, 1958, died September 10, 1964, at age 64.

Clarence A. Hay, Pipefitter who retired June 1, 1962, died September 14, 1964, at age 67.

J. D. (Doug) Hake, Instrument Man 1st, died September 7, 1964, at age 55.

## United Fund

(Continued From Page One) Contributions exceeding those of previous years. United Fund statistics reveal that individual contributions at the Refinery in the past have been below the average of those of employees at other area industries.

The committee urges every employee to back the drive, to better serve the community in which he lives.

U. S. POSTAGE  
PAID  
Edwardsville, Ill.  
Permit No. 25