



REVIEW

Wood River, Illinois

Vol. 27 No. 4 May, 1964

Cat Cracker Construction Under Way

A 270-foot pedestal was erected beside Wood River's Cat Cracker No. 1 early this month as contractors prepared to connect an 80-inch diameter flue gas line from the Cat Cracker Regenerator to a new furnace designed for complete combustion of the regenerator waste gas.

A 105-foot boom is mounted to the pedestal at a height of approximately 140 feet and is being used to hoist sections of the huge flue gas line and related equipment into position.

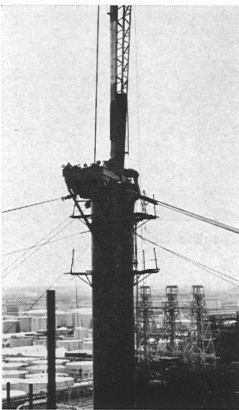
The flue gas line will be connected to the regenerator at the fifth and sixth levels of the Cat Cracker. The giant unit was shut down May 18, as the work on that particular phase of the construction project began.

Construction of the new furnace began in late November, just south of the Cat Cracker on a site formerly occupied by the K-5 reciprocating compressor installation. A second furnace for Cat Cracker No. 2 is being constructed in the same area. Shutdown of that unit is scheduled for fall of this year.

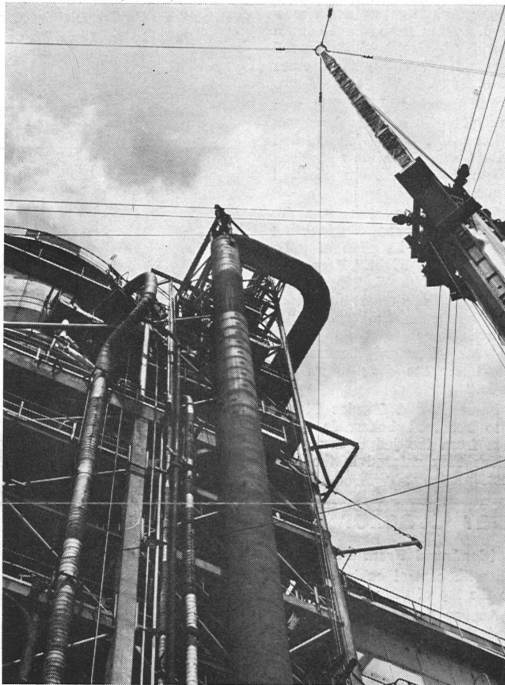
The new furnaces will be used as combination Cat Cracker feed heaters and 600 psi (pounds per square inch) steam generators, producing 175 million BTU's of heat per hour from what is now waste gas.

The 270-foot pedestal was erected in two sections. The base section, tubular steel rising 140 feet in the air, was mounted on a concrete base, and then a 130-foot mast was raised to the top of the tube, making a total of 270 feet. The long boom is at the 140-foot level.

(Continued on Page 2)



FLAG POLE SITTERS? No! It's contractor employees working at the 140-foot level of the gin pole at Cat Cracker No. 1. They're preparing for a 105-foot boom to be mounted at this particular spot on the tall pole.



IT'S A LONG WAY UP to the top of the mast erected beside Cat Cracker No. 1, in preparation for the connection of 80-inch duct work from the unit to the new CO furnace. The mast towers some 270 feet in the air. This view was taken before the boom was attached to the mast at the 140-foot level of the pole.

D. L. Buffington Named Manager Personnel and Industrial Relations

David L. Buffington assumed duties early this month as Manager Personnel and Industrial Relations, filling the vacancy created by the recent promotion of F. W. Albers to Administrative Superintendent, Refinery Manager A. C. Hogge announced Buffington's appointment late last month.

Buffington comes to Wood River from Shell's Martinez, Calif., Refinery, where he has served since November, 1960, as Assistant Man-



Buffington

ager Personnel and Industrial Relations.

A native of Burbank, Calif., Buffington received his bachelor's degree in economics from Stanford University. He began his Shell career in 1952, as a Clerk in the Personnel and Industrial Relations Department of the Pacific Coast Exploration and Production Area Office in Los Angeles. He later served in the San Joaquin and Coastal Divisions of the Pacific Coast Exploration and Production Area, and in 1957 returned to Los Angeles as Personnel and Industrial Relations Section Supervisor of Industrial Relations.

Buffington's wife, Lyn, and children, Forrest, 10, and Marcia, 5, will move to this area soon.

Roark Transferred to New Refineries

R. B. Roark, Buyer, Purchasing-Stores, was transferred to Odessa, Tex., May 1, where he assumed duties as Purchasing-Stores Representative responsible for Purchasing-Stores functions at both the Odessa and Ciniza Refineries, according to

an announcement by Refinery Manager A. C. Hogge.

E. E. Hellman replaced Roark as Buyer in Wood River's Purchasing-Stores Department, and H. J. Niemann replaced Hellman as Material Control Supervisor.



SHELL QUEEN FOR 1964 is Miss Susie Powers, Engineering Services Stenographer, shown here being crowned by last year's queen, Mrs. Linda Klope, Engineering Field Department. Looking on are Administrative Superintendent F. W. Albers (left) and Manager Engineering Services E. D. Underwood. Miss Powers was one of five candidates for the honor. She is 19 years of age.

Susie Powers Is Crowned As Shell Queen for 1964

Miss Susie Powers, attractive, personable 19-year-old Stenographer in the Refinery's Engineering Services Department, was crowned Shell Queen of 1964 Friday evening, May 22, in ceremonies at an employee dance at the Mineral Springs Hotel in Alton. An estimated 200 persons witnessed the coronation.

Miss Powers, daughter of Mrs. Eleanor Powers, lives in Benld, and was one of five candidates for the honor. She was elected by ballots cast by male Staff employees at the Refinery,

and was crowned by last year's queen, Mrs. Linda Klope, Engineering Field Department.

Administrative Superintendent F. W. Albers served as master of ceremonies for the coronation, introducing the five candidates and their escorts and announcing the name of the new queen. E. D. Underwood, Manager Engineering Services, escorted Miss Powers to the bandstand for the coronation. Music for the coronation and dancing was provided by Al Rezbek and his orchestra.

Other candidates and their escorts were Mrs. Pat Loemker, Treasury Department, escorted by Chief Accountant J. S. Wilwerding; Miss Nancy Milazzo, Purchasing-Stores, escorted by Assistant Manager J. B. Bradshaw; Mrs. Mary Ann Pruetzel, Personnel and Industrial Relations, escorted by Manager D. L. Buffington; and Miss Dotti Spann, Aromatics Department, escorted by Manager George Holzman.

Braus Named To Head Office Technological

J. M. Braus, Assistant Manager Gas Department, recently was named Senior Technologist in the Head Office Manufacturing Technological Department. He will be replaced about July 1, by J. V. Schauer, according to an announcement by Refinery Manager A. C. Hogge.

Schauer, a graduate of Notre Dame University with a bachelor's degree in chemical engineering, began his Shell career as a Technologist in the Experimental Laboratory of the Wilmington-Dominguez, Calif., Refinery in August, 1955. He served there until 1960, when he was transferred to the Head Office Manufacturing Technological Department. For the past year, he has been on foreign assignment in The Hague.

Braus began his Shell career at Wood River in 1958, as a Technologist. He was named Assistant Manager of the Gas Department in October of last year.

New Tax Law Modifies Sick Pay Exclusion

The Revenue Act of 1964, which lowered withholding from 18 per cent to 14 per cent, has also modified the amount of sick pay which may be excluded from taxable income, retroactive to January 1, 1964.

Under the old law, up to \$100 per week of sick pay could be excluded from taxable income, beginning the day an employee was hospitalized or injured, or after a waiting period of seven days if he was confined at home.

The new law retains the \$100-per-week maximum exclusion but extends the waiting period to 30 days — whether the employee is hospitalized or confined at home. An exception is made to the 30-day waiting period when the employee's salary drops to 75 per cent or less of regular weekly wages while he is sick. In this case, up to \$75 per week of sick pay is excluded from taxable income immediately if the employee is hospitalized, and after seven days if he is confined at home. At the end of 30 days, the regular \$100-per-week exclusion takes effect.

Shell will adjust the amount of tax withheld from your paycheck after you have been sick for 30 days. Those sick less than 30 days who are eligible for sick pay exclusion may claim this amount when filing income tax returns.

Shell People in the NEWS

Patrick E. Leamy, son of Dispatching Manager H. J. Leamy, was chosen recently to receive the Fontainebleau Scholarship, which provides full expenses for summer study in the Fontainebleau School of Fine Arts, Fontainebleau, France. Leamy is a senior architectural engineering student at the University of Illinois. He will leave with other such students from all over the United States on June 20, and will return to the United States September 5.

John Helm, son of P. S. Helm, Gas Department, recently was awarded a \$2,500 tuition teaching assistantship in mathematics at Purdue University, Lafayette, Indiana. Helm, a senior at Southern Illinois University at Carbondale, will graduate in June and begin his graduate studies at Purdue in the fall.

Tom Leeds, son of Alkylation Manager T. F. Leeds, recently was nominated with three other students of St. Ambrose College in Davenport, Iowa, for "Outstanding Member" of the St. Ambrose Young Republicans Club. Leeds is a sophomore at St. Ambrose.

Kim Barnett, adopted son of C. W. Barnett, Refinery Laboratory, recently received a first efficiency award in the intermediate division of the Greater St. Louis Science Fair, sponsored by the ST LOUIS POST-DISPATCH.

V. E. Yust, Research Laboratory, and George Holzman, Aromatics, were judges April 25, of the South Central Illinois Regional Science Fair at Greenville College.

Cliff Talley, son of C. G. Talley, Refinery Laboratory, has been named basketball coach at Highland High School. The former Illinois All-State star from East Alton-Wood River Community High School and three year letterman for the Missouri University Tigers has been coaching for five years, the last four at Sullivan, Mo., High School, where his team won 76 games and lost 37.

Marvin Baird, Senior Inspector, Fire and Safety Department, and President of the Madison County Safety Council, is a member of the committee planning the fourth annual area industrial safety conference to be held June 3 at Southern Illinois University's Alton Center.

J. E. Kingery, Engineering Services, will graduate in June from Southern Illinois University with a bachelor's degree in business, earned by attending night courses during the past several years. As a graduating senior and honor student, Kingery was presented a tie pin as a scholarship token in an Honors Day program May 12.

Camera Club Wins in Slide Competition

Members of the Shell Camera Club won four of the five top places for best colored slides May 5, in the annual Tri-Camera Club competition for clubs from Shell, Owens Illinois Company and Olin. The Shell photography enthusiasts also captured a traveling trophy for the best club entry in the contest.

The contest was held in the Onized Club rooms, and slides were rated and judged on the basis of theme (subject), composition, color and technical knowledge used in taking the photograph (lighting and exposure). Judges were Russell Irwin and Bob Grout of McDonnell Aircraft Company's Camera Club.

Phil Belanger, Lube Oils, won first place in individual competition with a slide entitled "Shell Sunset," a view of Wood River Refinery from Kendall Hill at sunset.

Second place was won by Maurice Robinson, Engineering Field, with his slide of "Mt. Rushmore at Night." Vera Gibson, wife of C. W. Gibson, Engineering Field, won third place with "Burning Embers." A fourth place went to R. L. (Jack) Turner, Engineering Field, for the slide "Miss Mikado."

Belanger and Charles Gibson also received honorable mention from the judges for other slides they entered in the contest.

Cat Cracker

(Continued From Page 1) el, with control cables running to the top of the mast.

Anchor lines run from the pedestal to "dead men" approximately 600 feet away from the base.



CAROL LANE VISITED Wood River Refinery Thursday, May 14, and presented her program to Refinery female employees who had not had an opportunity to see it on previous visits. Miss Lane, Shell's Women's Travel Director, is shown above addressing part of the group in the Main Office Conference Room. She made several other speaking appearances while in the Wood River area.

Retirements



E. S. Barnett Eng. Field C. J. Curran Eng. Field L. C. Hinman Utilities Z. T. Lynch Lube Oils



W. Russell Eng. Field W. A. Warren Eng. Field J. Wooldridge Compounding

1964 SRA Winners' Banquet Photographs



A VIEW OF THE SPEAKERS' TABLE shows these four members of the Shell Recreation Association Board of Directors. From the left are Oscar Kliener, representative of retired employees; Cliff Barnes, Purchasing-Stores, SRA Treasurer; Joe Klinke, Engineering Field, Board Members; and Joe Hmurovich, Engineering Field, President of the SRA Board.



VISITING WITH GOALBY are SRA President Hmurovich, Athletic Chairman Ken Zumwalt, Utilities, and Social Chairman Quentin Nungesser, of the Fire and Safety Department.



Speaker Bob Goalby





ATTENDING SHELL'S 12th Management Course last month at the Arden House Campus of Columbia University was J. H. Tomfohrde, Wood River Process Superintendent, shown here in a discussion with Shell Chemical Company President and Member of the Board of Directors of Shell Oil Company R. C. McCurdy.

Shell Chemical's Marietta Plant To Produce Polyisoprene Latex

Shell Chemical Company will install facilities at its Marietta (Ohio) Plant to manufacture 20 million pounds per year of polyisoprene latex. Initial operation is scheduled early in 1965. The Marietta Plant has been producing solid polyisoprene, the only synthetic completely equivalent to natural rubber, since early 1962, when its annual capacity was disclosed as 80 million pounds. Shell Chemical's polyisoprene plant at Torrance, California, rated at 40

million pounds per year, has been the world's only source of polyisoprene latex since late 1961.

Polyisoprene latex is a milky emulsion of rubber in water similar to that obtained directly from trees on plantations. It is in wide demand for the manufacture of foam rubber, adhesives, and dipped goods such as surgeons' gloves to which it imparts properties previously unattainable.

Bridge Tourney Winners Are Named

Winners of the Shell Recreation Association Bridge Club's Team of Four Bridge Tournament were Mr. and Mrs. Ray Randels and Mr. and Mrs. Pete Chiste. Finishing in second place were J. D. Metcalfe, Walt Lochmann, Frank Nisbet and Irv Rozalsky. Randels is Manager Fire and Safety and Chiste is employed

in the Thermal Cracking Department. Members of the second place team are Research Laboratory employees, except for Nisbet, who is an Engineering Services employee.

A total of 10 teams took part in the tournament. The 1964 tournament will start soon, with all SRA members and their wives invited to participate.

Free Shell Touring Service Available

Planning your vacation? Why not let Shell help you?

Shell's Touring Service, available free to all customers, is designed to make things easier for the motoring traveler. Your trip can be more fun when Shell travel experts work out a choice of routes for you — the fastest or the most scenic — whichever you prefer.

And it's easy to obtain this service, for all you have to do is request it.

Postcards are available at the Refinery's Personnel and Industrial Relations Department or from your friendly Shell dealer on which there are a few pertinent questions about your plans. When these cards are properly filled out, they are mailed to the Shell Touring Service office in Indianapolis, where experts plan your trip for you. Information requested is returned to you in a few days.

The questions asked on the card include your location and your destination, your date of departure, the number of days you plan to spend on the way to your destination, the route you prefer to take, the route you prefer for the return trip and the number of days you plan to spend on that leg of the journey.

The information package which will be sent to you includes Shell road maps, with your routes properly marked on them, literature about the places you will visit on the trip, a handy motel guide listing the best places to stay, with the rates, and an expense record blank on which you can keep records of the expenditures of your trip.

All of this material is yours for the asking. Just let the Touring Service know you're planning a trip, and you'll be helped from that point.

And don't forget that Shell dealer when the time comes for you to start your trip. Naturally, you'll want to start out on the road with a full tank of gasoline, but it also would be wise to take your car to him a day or so before you leave for a pre-trip Shell lubrication* and an oil change, if necessary, and the dealer will make a thorough check of your car to make sure



PLANNING YOUR VACATION? Shell Touring Service will help you, with road maps, motel guides, and other information that will make any motoring trip more fun for you and your family. In the above photograph, Karen Mense, Main Office Receptionist, looks at a Shell Touring Service Kit for a trip to the World's Fair.

everything else is in working order.

It might result in a more en-

joyable trip for you and your family.

*Registered Trademark, U.S. Patent Office.

Shell Is Helping in Support of API Auto Travel Promotion Campaign

Shell is helping support the American Petroleum Institute's automobile travel promotion campaign, which last year produced an estimated 27 per cent more trip-taking than there would have been without such a campaign.

Advertisements at Shell service stations and in newspapers, magazines and television will include a reference to the API campaign. The slogan, "See America Best . . . By Car," will be used as a part of all of Shell's newspaper advertising in 136 markets.

The API campaign will consist mainly of a series of newspaper advertisements featuring some local "Heritage Trail" tours which can be taken comfortably in one day and others which can be taken over a weekend. The advertisements contain detailed information for the entire tour, including mileage distances, references to historical and scenic points of interest and a road map of the route to be taken. The basic "Heritage Trail" tours are in New England, Dixieland, Ozark, Hiawatha, Lincoln and Old West.



C. A. Nevlín
Refinery Lab
40 Years

J. W. Leavell
Tr.-Eff. Cont.
30 Years

W. W. Culp
Eng. Field
25 Years

M. F. Graham
Fire & Safety
25 Years

D. J. Konkó
Eng. Field
25 Years

F. A. Lamm
Eng. Field
25 Years

W. E. O'Dell
Eng. Field
25 Years

R. W. Smith
Eng. Field
25 Years

A. M. Wallace
Eng. Field
25 Years

20 Years

- J. Bonifer Jr.
Eng. Field
- R. W. Cress
Eng. Field
- L. E. Halliday
Treasury
- E. D. Hamilton
Aromatics
- A. Jackson
Eng. Field
- W. K. Parrack
Eng. Field

15 Years

- E. J. Blair
Eng. Field
- C. W. Brase Jr.
Distilling
- E. J. Burns
Eng. Field
- R. F. Massears
Eng. Field
- D. L. Reeves
Eng. Field
- N. W. Wells Jr.
Aromatics

10 Years

- B. G. Becker
Eng. Field
- A. W. Borgini
Lube Oils
- E. A. Domkoski
Eng. Field
- P. J. Korbet
Treasury
- E. J. Loker
Eng. Field
- J. H. Majzel
Eng. Field
- G. W. Morgan
Alkylation
- V. L. Noll
Eng. Field
- H. A. Tipsword
Eng. Field
- J. H. Troy
Fire & Safety
- R. M. Vannucci
Eng. Field
- H. Vinyard
Eng. Field
- E. Zamboni Jr.
Eng. Field

The Sports Review

'Wonderful World of Golf' To Be on TV Fourth Year

The most popular golf show on television, "Shell's Wonderful World of Golf," will begin its fourth year on the air in January, 1965, according to G. Gordon Biggar, Shell's Vice-President of Public Relations.

The series of 11 international golf matches will be similar in general format to the shows of past seasons. The one-hour shows will be televised nationwide on Sunday afternoons in color.

Gene Sarazen and George Rogers will again be the commentators. The executive producer will be Fred Raphael and the director will be Lee Schollem. Directors Group, Inc., will produce the programs under the direction of Kenyon and Eck-

First Quarter Fishing Contest Winners Listed

First Quarter winners in the Shell Recreation Association fishing contest were announced early this month by SRA officials, and aspirants for the grand prizes have some good-sized catches to beat in order to win.

First place in the bass division for the quarter was a 7-pound, 3-ounce catch by L. Skeldon, Cat Cracking. H. H. Hayes, Dispatching, led the field in the crappie division with a 1-pound, 7-ounce catch. And E. Allen, Dispatching, was tops in the bluegill division with a 14½-ounce catch.

Placing second, third and fourth respectively in the bass division were U. E. Miller, Engineering Field; M. Levi, Engineering Field; and R. D. Garner, Dispatching.

Second and third places in the crappie division went to J. I. Smith, Aromatics; and A. Corsere, Engineering Field.

Placing second and third in the bluegill division were V. Oehler, Thermal Cracking; and Fred Hess, Fire and Safety.

Your Beneficiary Designations Should Be Reviewed Periodically

Is the beneficiary designation for your life insurance and Provident Fund benefits up-to-date?

If you alter your marital status or gain or lose a dependent, you may wish to record the change. This will insure the benefits will be paid promptly to the person of your choice.

Beneficiaries may include wife (or husband), children or grandchildren. It also is possible to name other persons.

hardt, Shell's institutional advertising agency.

Production was scheduled to begin the week of May 18, at the Houston Country Club, Biggar said. Selection of outstanding courses throughout the Western Hemisphere and Europe and top-ranking international professional players will be announced later. The foreign courses are expected to be in England, Ireland, Germany, Denmark, Luxembourg, Italy, Monaco, Canada, Venezuela and Trinidad.

Tool Room Bowlers Win '64 League Championship

Tool Room bowlers captured the 1963-64 Refinery bowling championship early this month, when they swept the first two games of a best-two-out-of-three series from the Budstaffs for the second half title. Since they had earlier won the first half title, no further roll-offs were necessary.

The Budstaffs nosed out the Boiler House kegglers by two points to earn the fourth quarter flag.

Individual high average honors for the season went to Bob Awe, Research Rejects, with a 177.41 pins per game average, but he was only a fraction ahead of Charles Irwin of the Boiler House team who finished the season with an average of 177.18 pins per game. Finishing third with 173 pins per game was Herschel Nelson of the Tool Room team. Fourth was Ray Neuhaus, Boilerhouse, with 174 pins per game, and fifth was Charles Towne, Research Relics, with an average of 171.

Awe finished the season in the lead in the individual high three game series scoring department with a 629 series, followed by Clarence Shirley of the North Property team, who held a 625 series. Irwin was third with a 614 series. In high single game scoring, Don Isted, Boiler House, was first with a

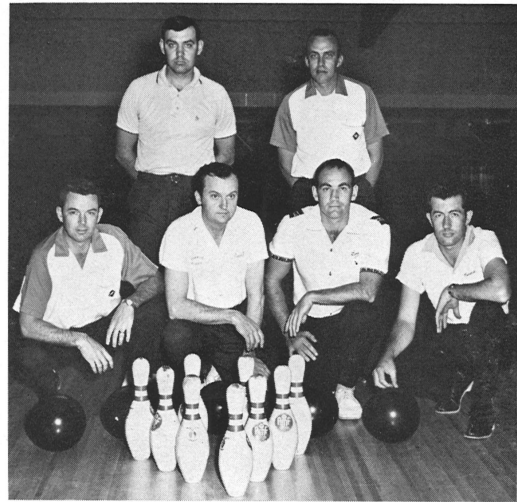
Shell Team Second in Industrial League

Shell's X-100 bowlers missed winning the 1963-64 Industrial Bowling League championship by 36 pins on May 7, when they lost the rubber game of a five-game roll-off with Westerner Club bowlers.

The X-100 team, first half Industrial League champions, won the first game of the five game series, lost the second and third games, and won the fourth to run the string as far as it would reach.

Westerner was winner of fourth quarter pin action, and then beat the third-quarter-winning Box Board bowlers to earn the roll-off berth against Shell X-100.

Bowling in the roll-off for X-100 were J. R. Wharry, Dispatching; R. D. Garner, Dispatching; K. R. Zumwalt, Utilities; C. E. Hoffstetter, Engineering Services; E. Kania, Engineering Field; and H. D. Tyrec, Lube Oils.



SHELL X-100 BOWLERS, who lost the Industrial League championship for 1963-64 in the fifth game of a five-game roll-off series with the Westerner Club, are shown above. From the left kneeling are J. R. Wharry, Dispatching; Emil Kania, Engineering Field; Bob Garner, Dispatching; Harold Tyree, Lube Oils. Standing are Charles Hoffstetter, Engineering Services; and Kenneth Zumwalt, Utilities. Not present when the photo was taken were Walt Fiesel, Lube Oils; and Frank Hackethal, Engineering Field.

Utilities, Research Teams Leading in Golf Leagues

Utilities golfers were in first place in the Shell Recreation Association's Premium Golf League after action on the links the week of May 11, but they were only four-tenths of a point ahead of the Gas Department team.

Utilities players had scored 147 points in six matches for an average of 24.5 points per match. Gas Department golfers had scored 145 points in six matches for a 24.1 points per match average. Thermal Cracking golfers were in third place with 142 points for an average of 23.1 points per match.

Others in the Premium League in order of their standings are the Pipefitters, 20.6; Refin-

ery Laboratory, 19.1; Alky-Aromatics, 16; Electricians, 14.8; Engineering Services, 13.6; Inspection No. 2, 12; and Inspection No. 1, 11.1.

Silver Shell League
In the Silver Shell League, Research No. 1 golfers were well out in front with 85 points in four matches for a 21.25 points per match average. Main Office golfers were in second place with an average of 19.5 points per match. Others in order of their standings in the eight team league were: Treasury and P & IR, tied for third and fourth with 19; the Conglomerates, 18; Engineering, 16.5; Research No. 3, 14.75; and Research No. 2, 11.5.

258 game, followed by Joe Klinke, Tool Room, with a 243 and Towne with a 238 game.

North Property bowlers led in both team high series scoring and team high single game scoring, with 3,066 pins in the former and 1,103 in the latter. In team high three game series scoring, Tool Room bowlers were second with 3,058 pins, and the Research Relics third with 3,018. In single game scoring, the Relics were second with 1,078 and the Tool Room third with 1,077 pins.

Ferrari Uses Super Shell in Racing Autos

Using Super Shell gasoline and motor oil, Ferrari automobiles have taken the top three places in the 1964 Sebring 12-hour Endurance Race held at Sebring, Florida. This marks the fifth year Ferrari has won the important Sebring Race using Shell products.

The Sebring 12-hour race has been described as one of the world's most grueling tests of cars and drivers—and of motor oils and gasolines. Won by the car travelling the greatest distance in 12 hours, the race is run on a curvy 5.2-mile course necessitating some 30 shifts per lap. The winning Ferrari this year covered 214 laps or 1,112.8 miles for an average speed of 92.364 miles per hour — a new record.

As in the past, Ferrari will use Super Shell in all the European and American races counting toward the international championships for car manufacturers and for drivers, which include those at Bridgehampton and Watkins Glen, N.Y. The high point of the race season will be the Le Mans 24-hour Endurance race in France, June 20-21. To date, Ferraries have won 13 world championships using Shell products.

SHELL OIL COMPANY Wood River, Illinois

Return Requested

IS THIS CORRECT?

IF NOT, NOTIFY YOUR SUPERVISOR:

U. S. POSTAGE
PAID
Edwardsville, Ill.
Permit No. 25



Shell Review

Published monthly for the employees of the Shell Oil Company, Wood River Refinery.

W. F. OSTERLOH Editor
Box 262, Wood River, Illinois. Phone 342
Address Communications to Editor, Shell Review,

Reminder:

Annual Barbecue
Saturday, July 18