

J. W. Sheehan Manager of New Refineries

Martin and Albers Are Promoted in Wood River Administrative Moves

J. W. Sheehan, Refinery Superintendent at Wood River since May 1, 1962, has been named Manager of the two recently purchased Shell Refineries at Odessa, Tex., and Ciniza, N. Mex., effective April 1, according to an announcement by M. P. L. Love, Shell's Vice President Manufacturing.

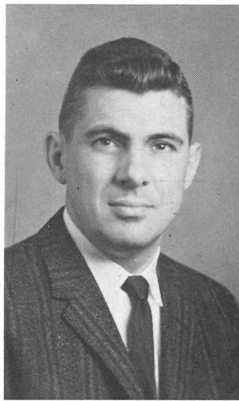
Sheehan is managing the refineries from Odessa, which has been established as the headquarters for the two manufacturing properties recently purchased from El Paso Natural Gas Products Company.

Wood River Refinery Manager A. C. Hogge has announced

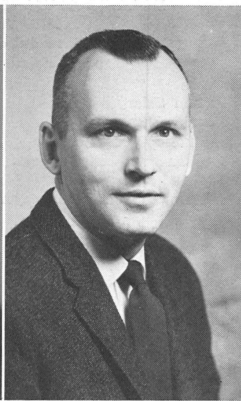
that Administrative Superintendent A. J. Martin replaces Sheehan as Refinery Superintendent, and that F. W. Albers, Wood River Manager Personnel and Industrial Relations, succeeds Martin as Administrative Superintendent. A successor to Albers will be named at a later date.

Sheehan came to Wood River from Shell's Norco, La., Refinery. He began his Shell career in 1947 at the Houston Refinery as a Senior Technologist after receipt of a doctor's degree in chemical engineering from the University of Texas. After ser-

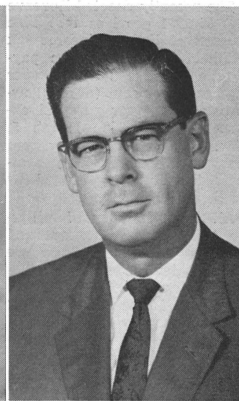
(Continued on Page 3)




F. W. Albers



A. J. Martin



J. W. Sheehan



SHELL REVIEW

Wood River, Illinois

Vol. 27 No. 3 April, 1964

Shell Acquires Refineries, Stations in Southwest U.S.

Two refineries and a marketing territory including several hundred service stations were purchased by Shell Oil Company March 9, from the El Paso Natural Gas Products Company. The acquisition of the properties will enable Shell to market its products competitively in Southwestern United States areas where the Company has not been represented previously.

The two refineries are at Odessa, Texas, and Ciniza (near Gallup), New Mexico. The marketing territory covers parts of five states, including West Texas and New Mexico and parts of Arizona, Utah and Colorado. Marketing properties include the service stations and a number of bulk depots and terminals. Shell has announced plans to dispose of the marketing properties in Arizona.

Provide Nationwide Service

The new marketing outlets, with their supporting facilities, will enable Shell to bridge the gap in the South between its eastern and western marketing facilities and enable the Company to provide nationwide service to Shell customers along the interstate highways which pass through the region.

Both refineries are completely modern, having been constructed in the late 1950s. Odessa has a crude intake of 22,000 barrels per day and Ciniza 12,

000. They will be managed by former Wood River Refinery Superintendent J. W. Sheehan, who will headquarter in Odessa.

Both refineries have distillation, catalytic cracking, alkylation and platforming facilities, and Odessa has a modern benzene plant. Also included in the transaction are crude oil pipe lines, located in the Four Corners producing region supplying the Ciniza Refinery and a products line from the Odessa Refinery to El Paso.

In addition to the appointment of Sheehan as Refinery Manager, R. R. Agosto, Group Leader, Technological at Wood River, has been named to the position of Technical Supervisor at the Ciniza Refinery. Agosto will be responsible for all technological and engineering matters, including economics and scheduling and for providing engineering technical services to the operations section of the refinery.

Agosto joined Shell at Wood River in 1953 after receiving a bachelor's degree in chemical engineering from Notre Dame University. He has served in the Refinery Laboratory, Aromatics and Technological Departments at Wood River, and was named Group Leader Technological in 1962.

He was succeeded in the Group Leader position here by R. K. Hartig.

Shell Queen Dance Set for May 22

The 1964 Shell Queen will be crowned in ceremonies at an employee dance at the Mineral Springs Hotel in Alton on May 22, it was announced this month by a committee making arrangements for the annual event. Five attractive young ladies have been chosen as candidates for queen, and arrangements are being made for the election of one of them for the honor.

The five candidates are Patricia (Pat) Hudson Loemker, Treasury Department; Nancy Ann Milazzo, Purchasing-Stores; Susan Helen (Susie) Powers, Engineering Services; Dorothy June (Dotte) Spann, Aromatics; and Mary Ann Pruetzel, Personnel and Industrial Relations.

As in previous years, the queen will be elected by secret ballots cast by male Staff Refinery employees. Ballots will be sent to them in early May.

Coronation ceremonies will be held at 10 o'clock the night of the dance, when the crown that has been held by Linda Klope, Engineering Field, since last May 24, will be passed to the new queen. Details of the ceremony will be announced later.

The dance that evening will be to the music of Al Rezabek and his orchestra. Hours will be from 9 to 1, and admission will be \$1 per couple. Tickets soon will be available from the queen candidates and other sources.

(Continued on Page 3)



SHELL QUEEN CANDIDATES FOR 1964 are these young ladies posing on the stairs. From the top down are Dotte Spann, Aromatics; Pat Loemker, Treasury; Susie Powers, Engineering Services; Mary Ann Pruetzel, Personnel and Industrial Relations; and Nancy Milazzo, Purchasing-Stores. One of the five attractive young ladies will be crowned Shell Queen at an employee dance Friday night, May 22 at the Mineral Springs Hotel in Alton.

First Quarter Net Income Up 5 Per Cent Over '63

Net income of Shell Oil Company and all wholly-owned subsidiaries for the first quarter of 1964 amounted to \$48,966,000, or 81-cents a share, which is five per cent more than the \$46,595,000, or 77-cents a share, earned for the first quarter of 1963, Monroe E. Spaght, President, announced April 23 at the annual meeting of shareholders.

Refined product sales volume for the first quarter of 1964 was up six per cent over the comparable 1963 period and well above the industry increase, Mr. Spaght said.

The gain in sales volume of Shell's automotive gasoline was markedly above the industry's, and the increased sales volume of refined products and chemicals more than offset lower prices of gasoline and distillates. Shell's production of crude oil and natural gas increased to new highs.

The Company's income for 1964 should be above that for 1963, barring an unexpected break in refined product prices, Mr. Spaght said. "We expect production and sales to rise at rates above industry averages, and we expect further improvement in chemical sales," he said.

Shell's investment program calls for a continued high level of exploration and production expenditures and increased expenditures in other operations, particularly manufacturing and chemicals. The Company's capital expenditures in 1964 will be about \$400 million.

Industry-wide, the 1964 outlook is generally considered good, Mr. Spaght said. Total demand is expected to rise perhaps three per cent during the year, with gasoline rising at a slightly higher rate.

Income Tax Law Changed; Are You Having Enough Withheld?

The recently enacted Revenue Act of 1964 provides that the amount of Federal income tax withheld by Shell from paychecks is reduced from 18 per cent to 14 per cent (after allowance is made for personal exemptions), effective March 5, 1964. Exclusion of sick pay from taxable income, which also affects the amount withheld by Shell, also has been modified.

All employees should familiarize themselves with these and other provisions in the new law to determine if there is substantial under-withholding from their pay. If too little is being withheld from your pay, you may wish to increase the withholding to avoid paying a substantial lump sum in taxes in April, 1965.

A summary of the principal changes in the law and the new tax rates for 1964 are contained in a supplement to Form 1040 ES titled "New Rates and Provisions for Estimating Tax under the Revenue Act of 1964." This can be obtained from post offices, banks or local Internal Revenue field offices.

You can estimate how much will be withheld from your pay in 1964, using as a guide the amount withheld from your first paycheck after the new law

MARRIED COUPLES WITH TWO DEPENDENTS FILING A JOINT RETURN (Using the standard deduction to a maximum of \$1,000 and claiming four exemptions)

	A	B
Annual Salary	\$6,000	\$9,600
Taxable Income	3,000	6,240
Income Tax (1964)	500	1,128
1964 Tax Withheld	486	1,014
Due Government by Taxpayer	\$ 14	\$ 114

went into effect. (However, it should be noted that withholding of tax from paychecks received before March 5, 1964, was computed at the former 18 per cent rate.) Then you can compare the amount to be withheld in 1964 with your estimated 1964 tax liabilities — noting any salary adjustments — and determine whether you should increase your withholding.

You should note that the new reduced withholding rates may in some instances result in under-withholding of income tax for 1964, as illustrated by the random examples shown above:

Under the new tax law, it is quite likely there will be a difference this year between tax withheld and the actual income tax due. This results in part from the withholding being lowered immediately to 14 per

cent, while the basic tax rate is being lowered in two steps— to 16 per cent in 1964 and to 14 per cent in 1965, with similar reductions in the higher tax rates.

If your withholding falls short of your actual tax liabilities, you might be required to file a declaration of estimated income tax and make quarterly payments. To avoid this you may wish to increase your withholding in the following manner:

1. Reduce your exemptions by one or more. (W-4 forms used in taking this action are available at Wood River Refinery's Personnel and Industrial Relations Department.)

2. If reduction of exemptions to zero does not accomplish the desired additional withholding, you may authorize Shell to withhold an amount for income tax

purposes in excess of the legally required 14 per cent in order to bring your withholding more in line with your actual income tax liability for 1964. This request must be made in writing to your payroll center on a form supplied by the center.

Employees who have already authorized the Company to withhold more than the legal requirement may wish to review their situation in light of the new tax law. If you wish to make a change, it should be submitted in writing.

Shell's Disability Benefit Plan

After one year of accredited service, employees are eligible for benefits under the Disability Benefit Plan. The plan provides for the continuance of a good share of your earnings when either sickness or acci-

dent prevents you from working. The benefits are determined by your years of accredited service and normal earnings at the time of disability. These benefits are provided by Shell at no cost to you.



A FAREWELL PARTY for Refinery Superintendent John W. Sheehan was held April 2, attended by many Refinery employees. In the above photograph, Sheehan is shaking hands with C. R. Woodford, Thermal Cracking, and W. S. Myers, Compounding, while in the background others examine the rifle presented to Sheehan.

Scenes From Annual SRA Easter Egg Hunt



More than 300 persons braved winter-like temperatures and March winds to attend the Shell Recreation Association's annual Easter Egg Hunt on Kendall Hill late last month. A few scenes of the day are offered in the photographs at left.

At top left are the prizes offered by the SRA to the best hunters in the various age groups. At top right, the hunters visit at the starting line in the windy weather. In the center row at left, some of the lucky hunters wait to claim their prizes.



Several family groups posed for the photographer. On the right in the center row of photographs, the Art Capelle family is grouped around the prizes the children won. From the left are Lisa, 5, Rodney, 6, Rickey, 8, Art and his wife, Nancy. Laurie, 20 months, is much more interested in the prizes than in the camera. Art is an Engineering Field employee.

At left in the bottom row of photos are the Charles Rose children. From the left are Christi, Clifford, Clair, Craig, Charles, Charlene and Cecilia. Rose, of the Dispatching Department, is in the back. At right in the bottom row are Dwight and Pat Deck and children, Kathy, Vicki and Bobby. Deck is employed in Research Laboratory.

Below is D. W. McLean, Personnel and Industrial Relations, and his daughter, Alice, 6.



Employees' Sons Finalists In Scholarship Competition

Two sons of Wood River Refinery employees were among 21 finalists in the National Merit Scholarship Corporation competition this year, and three children of Wood River employees received letters of commendation for the high scores they recorded in the competition.

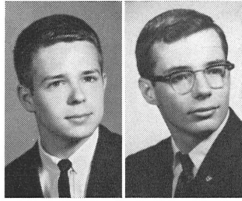
Named finalists and eligible for National Merit Scholarships are Lester C. Books III, son of L. C. Books, Senior Engineer, Engineering Office; and Michael J. McKee, son of R. J. McKee, Pipefitter 1st, Engineering Field.

Receiving letters of commendation were Susan C. Jones, daughter of L. C. Jones, Assistant Chief Research Physicist, Research Laboratory; Martin W. Mellor, son of C. V. Mellor, Operator 1st, Gas Department; and Ann P. Robinson, daughter of M. C. Robinson, Craft Supervisor, Engineering Field.

Both of the sons of Shell employees who are scholarship finalists are seniors in high school. Young Books is a senior at East Alton-Wood River Community High School, and McKee at Alton High School. Books is 18 years of age, and McKee will be 18 in August.

Young Books is president of the student council at East Alton-Wood River High School, and was president of his class in his junior year. Last summer, he attended the National Science Foundation's pre-engineering school of the Rolla, Mo., School of Mines and Metallurgy. He is a member of the National Honor Society and is on the high school tennis squad.

In addition, he is president of his Presbyterian Church group, a member of the Alton Presbyterian Youth Council, and has been active in the Spanish Club



Books McKee

at school. He is a Junior Rotarian and attends Rotary meetings as a representative of his school. He has enrolled in Purdue University, where he will begin work next fall toward a degree in engineering.

Young McKee also is a leader in his school. He is an Olin science scholar and a member of the National Honor Society, a member of the Dramatics Club, played a role in the senior play, is a member of the Latin Club, Science Club, Math Club, Pep Club and Current Events Club, and the Yearbook staff. He is a member and past officer of the Cherry Street Baptist Church Baptist Youth Fellowship.

McKee is extremely active in Scouting work, is an Eagle Scout and holds the God and Country and Order of Arrow awards. In 1962, he was Eagle Scout Attorney General of Illinois in a special program at Springfield, and he attended the National Jamboree at Colorado Springs in 1960. He also has taken part in other extended Scouting camping programs.

He has held office in the Order of DeMolay and was a counselor of the Police Youth Camp. The college of his choice is Antioch College at Yellow Springs, Ohio, where he plans to major in law or political science.



Mr. and Mrs. L. B. Bensman, a son, Jeffrey Bernard. Bensman is a Pipefitter, Engineering Field.

Mr. and Mrs. J. E. Akers, a son, James Edward Jr. Akers is a Chemist, Refinery Laboratory.

Mr. and Mrs. R. L. Gregson, a daughter, Debra Lee. Gregson is an Engineer, Engineering Services.

Mr. and Mrs. E. L. Creamer, a son, Joseph Edward. Creamer is a Research Chemist, Research Laboratory.

Mr. and Mrs. H. Paul Smith, a son, Timothy Marshall. Smith is an Accountant, Treasury Department.

Mr. and Mrs. A. L. Klunk, a daughter, Marsha Lynn. Klunk is a Yardman, Engineering Field.

Mr. and Mrs. D. A. Janke, a son, Dell Ree. Janke is an Auto Mechanic 1st, Research Laboratory.

Joe LeVora Wins

Color Television Set

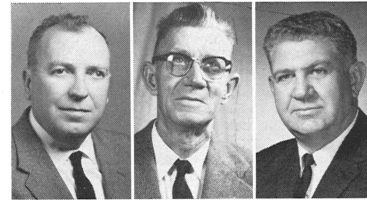
Mr. and Mrs. Joe LeVora are enjoying their television programs in color these days, as a result of their good fortune in a contest sponsored by the Tri-City Grocery Company. LeVora is an Operator in the Alkylation Department.

The Admiral color television set, prize in a Tri-City sponsored "Beverly Hillbillies Contest," was delivered to the LeVora home at 3517 Oscar Street in Alton in late March. LeVora reports its "first time we ever won anything."

Retirements



C. Grosenheider H. E. Hart W. E. Hartung J. D. Howorth
Research Lab Fire & Safety Lube Oils Eng. Field



R. D. Pinkerton M. Schmutzler C. E. Priest
Gas Eng. Field Tr.-Eff. Cont.

Sheehan to Manage Refineries

(Continued from Page 1)

vice in the Cracking, Gas and Technological Departments, he was transferred to Head Office in November, 1954, as a Senior Technologist in the Manufacturing-Technological Department.

He first came to Wood River in December, 1956, as Chief Technologist, and held that position until May 1, 1958, when he became Refinery Superintendent at Norco.

Martin began his Shell career at Wood River Refinery. A native of Washington, Ill., he was graduated from Purdue University in 1945, with a bachelor of science degree in mechanical engineering, and joined Shell as a Junior Mechanical Engineer

at Wood River. Two years later, he became Assistant Master Mechanic.

He later served as Industrial Engineer and Master Mechanic before becoming Assistant Chief Engineer in 1954. In 1956, he was transferred to Head Office as an Assistant Manager in the Wage and Salary Division, and he became an Industrial Relations Representative at Head Office in 1957. He returned to Wood River as Manager Personnel and Industrial Relations in September, 1959, and was named Administrative Superintendent May 1, 1961.

Albers also began his Shell career at Wood River. He joined the Personnel and Industrial Relations Department in 1949, and in February, 1951, was transferred to Head Office. He was engaged in industrial relations work until September, 1955, when he was transferred to the West Coast as Industrial Relations Representative. He returned to Wood River in September, 1958, as Assistant Manager Personnel and Industrial Relations and became Manager of the department May 1, 1961.

Albers is a native of Nebraska City, Neb., and attended Nebraska University at Lincoln and Washington University in St. Louis, where he received bachelor of science in business administration and law degrees.

Annual Shell Queen Dance Is Scheduled for May 22

(Continued from Page 1)

Each of the queen candidates has been employed at the Refinery for more than one year. Their ages range from 19 to 24.

Pat Loemker, 21, began work for Shell in June, 1960, after graduation from Worden High School. She began work in Engineering Office as a Clerk, and since September of that year has served in various capacities in the Treasury Department. At present, she is a Telephone Switchboard Operator.

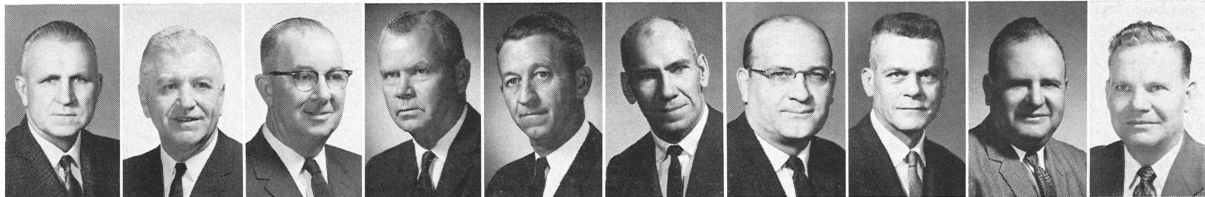
Nancy Milazzo, 19, began work for Shell in June, 1962, as a Clerk in the Treasury Department. She was transferred to the Purchasing-Stores Department as a Clerk in February, 1963, and serves in that capacity now. She is a 1962 graduate of Roxana High School, and lives at 111 East Fifth Street in Roxana.

Susie Powers, also 19, began work the same day as Nancy, as a Stenographer in the Treasury Department. She transferred to the Engineering Services Department in that capacity in June, 1963. Susie is a 1962 graduate of Gillespie High School, and lives in Benld.

Dotte Spann, 24, is a 1958 graduate of East Alton-Wood River Community High School. She began work in June of that year as a Clerk in the Compounding Department. In July, 1963, she transferred to the Treasury Department as a Stenographer, and then to the Aromatics Department as a

Stenographer in September of last year. Dotte lives at 303 North First Street in Wood River.

Mary Ann Pruetzel, 19, began work for Shell the same day as Nancy and Susie as a Stenographer in the Treasury Department. She was transferred to Personnel and Industrial Relations as a Clerk on May 1, 1963. She is a 1962 Graduate of Civic Memorial High School in Bethalto, and lives at 55 East Haller in East Alton.



J. J. Fratic Eng. Field 35 Years J. R. Hamilton C. S. Scandrett D. L. Patton J. H. Bryant B. C. Gibbons T. A. Hargiss H. F. Little R. B. Travis O. E. Williams
Distilling Ther. Cracking Eng. Field Eng. Services Eng. Field Eng. Field Eng. Field Eng. Field Eng. Field Eng. Field

20 Years

C. J. Curran Eng. Field J. L. Klinke Eng. Field O. A. Rutz Compounding

15 Years

C. H. Ott Eng. Office C. H. Rose Jr. Dispatching W. Speciale Eng. Field W. H. Wallace Eng. Field

10 Years

S. Gall Eng. Field H. L. Smith Eng. Services

The Sports Review

Refinery Golf Leagues to Begin Action on April 28

Refinery golfers will tee off Tuesday, April 28, in an 18-week race for the Refinery golf championship. A season divided into halves of nine weeks each will be played in two leagues, which will be followed by play-offs between first and second half winners, and then a championship match between the winners of the two leagues.

Eighteen teams will be taking part this year, according to Shell Recreation Association officials. The Premium League will start play with a 10 team league, and there will be eight teams in the Silver Shell League.

Teams and their captains are as follows:

Premium League

Pipefitters — Dave Patton; Inspection No. 1 — William Cook; Inspection No. 2 — John Menzie; Gas — Charles Mellor; Alky-Aromatics — Ken Baird; Utilities — Ken Zumwalt; Electricians — Edward Cox; Thermal Cracking — Leroy LaPelle; Refinery Laboratory — Hobart Turley; and Engineering Services — Dale Appleby.

Silver Shell League

Research No. 3 — Carl Legate; Main Office — Dave Hart and Charles Cech; Research No. 1 — E. B. Gillis and Vern Welch; Engineering — W. G. Cline; Conglomerates — George Sample; Research No. 2 — Jim Maynard; Treasury — Earl Fabrik; and Personnel and Industrial Relations — L. E. Bethards.

Averages Close in Refinery Bowling

Decimals are being used these days to compute the averages of the top three bowlers in the Refinery League. Herschel Nelson of the Tool Room team, Charles Irwin of the Boiler House keglers and Bob Awe of the Research Rejects all are sporting averages of 178 pins per game.

But Nelson is the league leader, for his average in 78 games is 178.28 pins per game. Irwin's average for 66 games is 178.27, and Awe's average for 69 games is 178.12. And League Secretary

Bowling Tourney Winners Announced

Clarence Shirley, Pipefitters, won first place in singles competition in the Shell Recreation Association's annual bowling tourney April 4 and April 11, at the Bowl Inn alleys in East Alton. Shirley rolled a 615 scratch series and a handicap score of 684 pins to capture the singles title.

Charles Irwin and John Merkel, Utilities, teamed to roll a 1274 series to capture doubles honors. Irwin teamed with Jack Cherry, Lube Oils, and Joe Nash, Cat Cracking, for a 1,864-pin series and the title in the three-man team competition.

Garrett Price, Research Laboratory (serving here on loan from Shell International's Thornton Research Centre in England), captured all events honors with a handicap score of 1,893 pins. Price placed second

in singles competition with a 662 series. Placing third with a 655 series was Ray Schindewolf, also of Research Laboratory.

Placing second in doubles competition with 1,255 pins were Irwin and Ivan Stull, both of Utilities. In third place with 1,252 pins were Charles Hoffstetter, Engineering Services, and John Martin, Engineering Office.

Tied for second and third places in the three-man team events with 1,789 pins each were teams composed of Lou Purdy, Alkylation, George Archibald, Aromatics, and Cherry; and Jess Grover, M. C. Robinson and Joe Hmurovich, Engineering Field.

In all events competition, Cherry placed second with 1,886 pins, and Hmurovich and Joe Klinke, Engineering Field, tied

for third and fourth with 1,830 pins each.

Shell Recreation Association officials report there were 50 entries in the singles competition, 60 in the doubles events and 15 three-man teams.

Members of the tournament committee included Charles Towne, Research Laboratory; Herschel Nelson, Carpenters; C. W. Barnes, Purchasing Stores; and Klinke.

Shell People in Alaska Are Safe After Quake

All Shell people in Alaska and their families have been reported safe and uninjured following the earthquake which wreaked havoc there March 27. Damage to Shell Exploration and Production and Marketing facilities in the region was not significant.

The drilling rig Glomar II, which operated last year in Cook Inlet for Shell, Richfield Oil Corporation and Standard Oil Company of California, as partners, was at sea returning to Alaska at the time of the earthquake and was not damaged. The services of the men and equipment of the rig have been offered to Governor William E. Egan of Alaska, on behalf of the three companies, for use in restoration of essential services.

There was no known damage to the Middle Ground Shoal No. 1 well in Cook Inlet 60 miles southwest of Anchorage. This was a wildcat drilled by Glomar II last August and hailed as the second major oil discovery in Alaska. However, the condition of the well casings on this and other wells in which Shell has an interest in Cook Inlet is still to be determined.

Shell Films Commended in National Magazine Article

In a recent article devoted to Shell's educational film series, the Saturday Review Magazine called Shell's film program an "outstanding exception" to many corporation films which remain unused because they do not fulfill the needs of teachers and students.

Shown to an audience of more than 17 million in 1963, the films have "paid off in good will because Shell's films have been of value to school systems throughout the country."

Shell's three film libraries circulate 9,000 prints of 24 different films for an estimated 350,000 screenings each year. The 12-to-33-minute color films are in three main categories: Science, 13 subjects; aviation, six; and oil, five. The films are essentially educational and deal with topics as varied as an introduction to paleontology or an explanation of how an airplane flies.

Long Term Loans

The films are not only sent to schools for individual showings, but are loaned out to school systems under a three-year long-term arrangement. Among the 350 long-term loan centers are the Los Angeles school system which shows 225 prints to more than 1,350,000 students each year, and New York City's Board of Education which shows

93 prints to an annual audience of nearly 500,000.

A catalog of these films is available from Wood River's Personnel and Industrial Relations Department, and 17 of the films are available at the Refinery. Those circulated from the Refinery are widely used by area school groups, and many employees use the films when they are called upon to present a program for some organization of which they are a member.

All five of the series of films about oil are available at Wood River. They are "Prospecting for Petroleum," "Birth of an Oil Field," "Refining Oil for Energy," "Oil — The Invisible Traveler," and "The Story of Oil Marketing."

Nine of the science films are available through the Personnel and Industrial Relations Department. They are "The Rival World," "The Fossil Story," "The Drama of Metal Forming," "The Gas Turbine," "Lever-Age," "The Diesel Story," "An Introduction to the Heat Engine," "Crude Oil Distillation," and "Harnessing Liquids."

Three aviation films are available, "Song of the Clouds," "The History of the Helicopter" and "How an Airplane Flies," which is a series of four films.

Charlie Towne of the Research Relics, who computed the above, is in fourth place with 172 pins per game, far enough behind to make the decimal points unnecessary.

The Boiler House team is leading the league mid-way through the last quarter of the season, with a total of 16 points. The Budstaffs are close behind with 15 points. Engineering Office bowlers are third with 12 points and the North Property team is fourth with 10 points.

The Relics lead the second

Lab Club Has Pin Tourney

Helen Welch captured top honors in the women's division of the 1964 Research Lab Club bowling tourney April 12, and Dwight Deck and Bob Awe shared honors in the men's division.

Mrs. Welch rolled a 627 series for first place in the singles category, and knocked over a total of 1,216 pins to win the all events crown. Betty DeLaurenti was in second place in both categories with a 606 series and 1,151 total pins; and Pat Deck was third with a 563 series and 1,121 all events total.

Deck rolled a 680 series in men's singles' competition, followed by Thurston Skei with 675 and Jim Adcock with 672. In all events competition, Awe knocked over 1,231 pins, followed by Skei with 1,225 and John Watson with 1,212.

Jim Price and Jim Adcock teamed to win doubles competition with 1,214 pins, followed by Mrs. Welch and Awe with 1,207 pins and Phyllis Bickham and John Watson with 1,156.

Check Your HSM Coverage

If you are enrolled for family coverage under the Shell Hospital Surgical Medical Program and have an unmarried, dependent child approaching age 19, it is up to you to arrange for continuation of coverage beyond the child's 19th birthday by making application and paying an additional monthly premium.

If the child thereafter loses dependency status as a result of marriage, full-time employment or attaining age 25, you should arrange to discontinue the additional payment, since he or she no longer is eligible to receive benefits under the Program. Arrangements in either case can be made through your Supervisor.

division with eight points, while the Tool Room bowlers and Tech Department are tied for sixth and seventh places with seven points each. The Rejects are in the league cellar with five points.

Awe continues to lead the league in the individual high three game series department with a scratch series of 629, followed by Clarence Shirley of the North Property team with 625, and Irwin with 614. In individual high single game scoring, Don Isted of the Boiler House squad is high with 258, followed by Joe Klinke of the Tool Room with 243 and Towne with 238.

The North Property team leads the league in team high three game series scoring with 3,066 pins, followed by the Tool Room with 3,058 and Relics with 3,018. In team single game scoring, North Property bowlers hold a record of 1,103 pins, compared to 1,078 for the Relics and 1,077 for the Tool Room.

SHELL OIL COMPANY Wood River, Illinois

Return Requested

IS THIS CORRECT?

IF NOT, NOTIFY
YOUR SUPERVISOR:

U. S. POSTAGE
PAID
Edwardsville, Ill.
Permit No. 25



Shell Review

Published monthly for the employees of the Shell Oil Company, Wood River Refinery.

W. F. OSTERLOH Editor
Box 262, Wood River, Illinois. Phone 342
Address Communications to Editor, Shell Review,